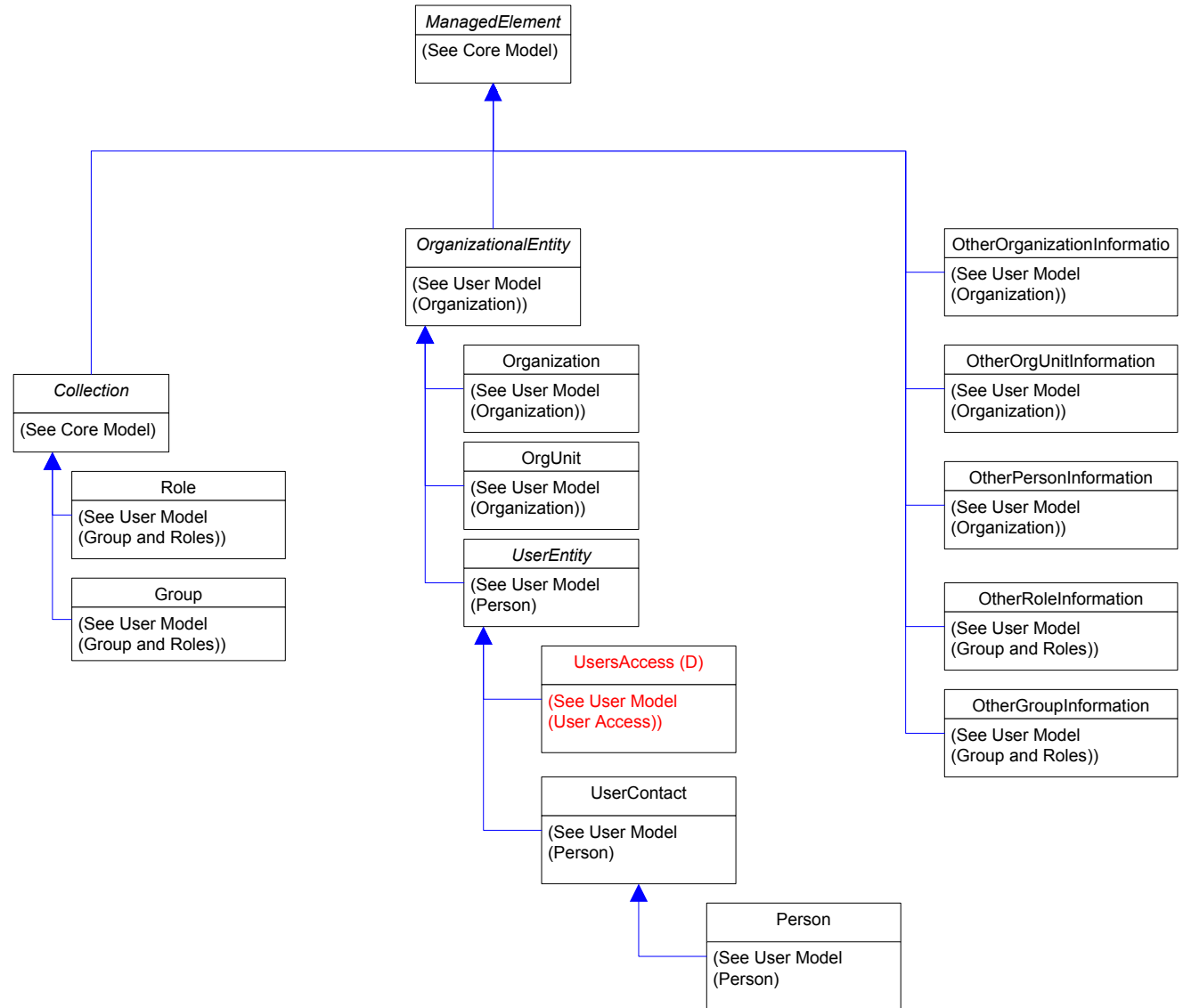
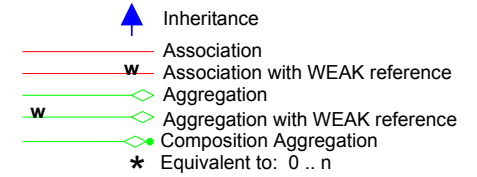









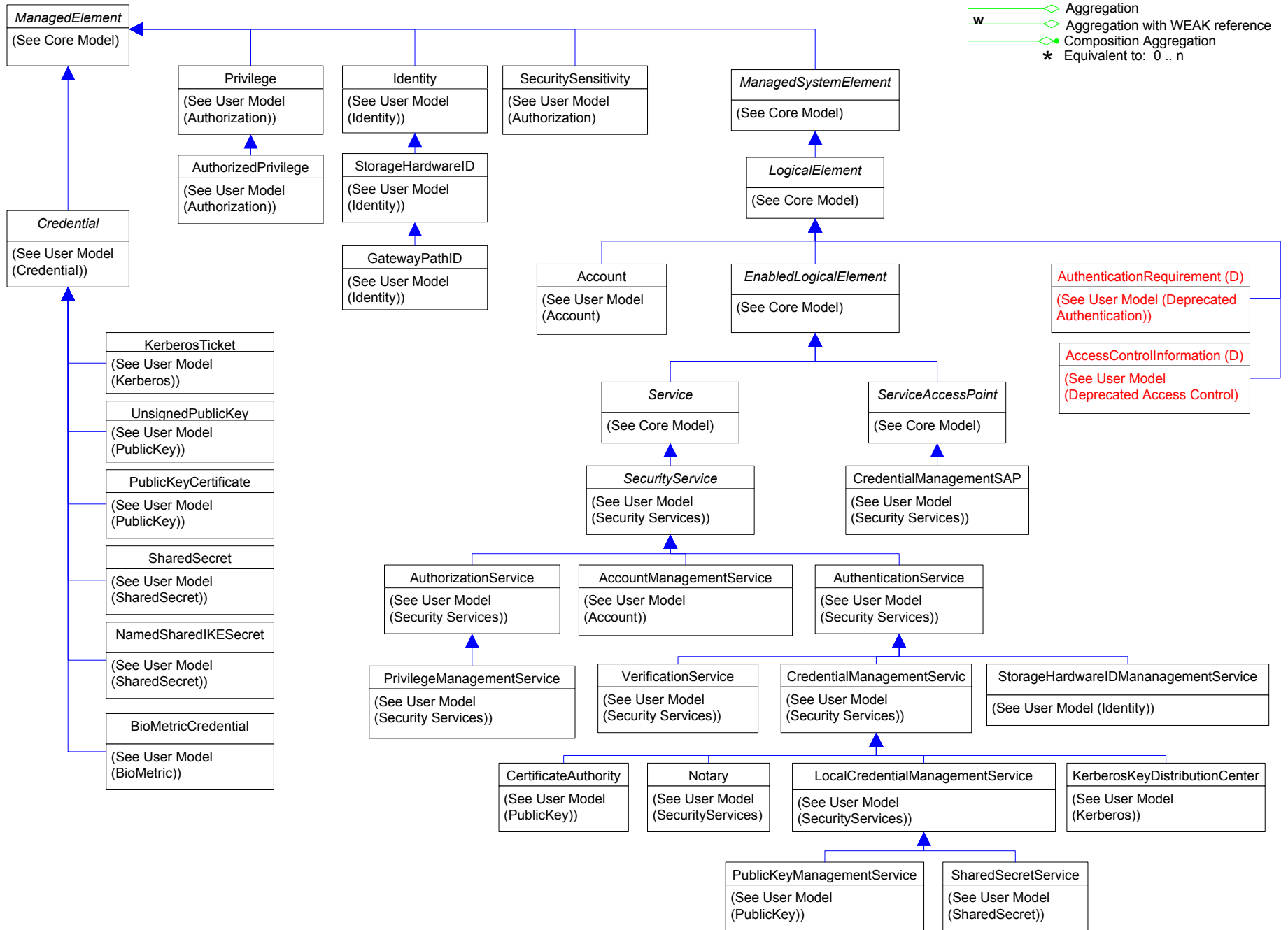
Title : User Schema v2.9 - Final
 Author : DMTF User/Security WG
 Date : 12/01/2004

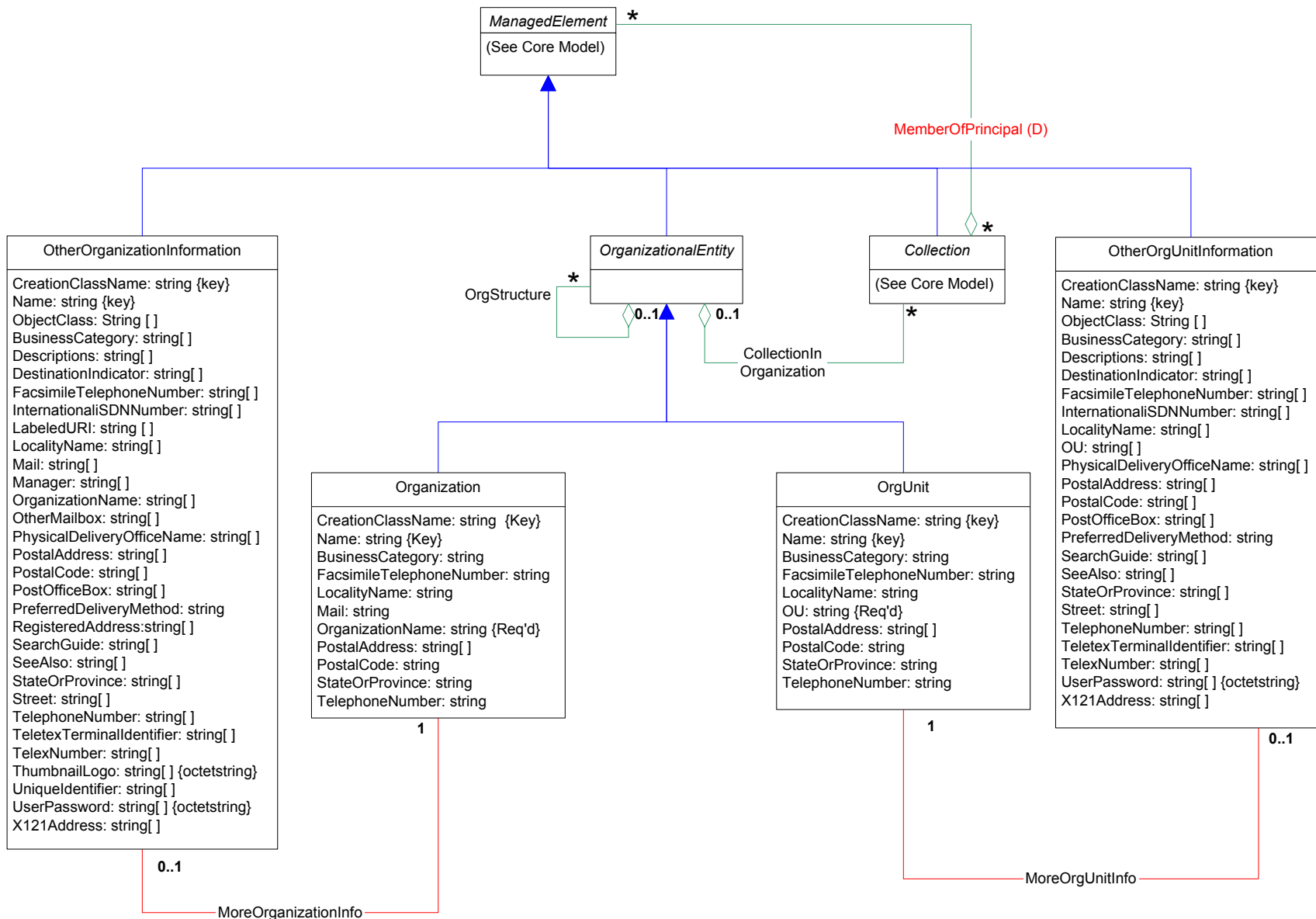
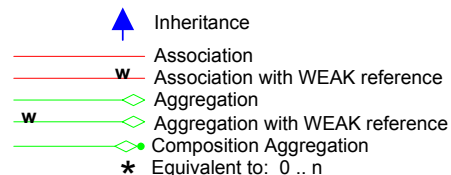
- Page 1 : Overview User
- Page 2 : Overview Security
- Page 3 : Organization
- Page 4 : Person
- Page 5 : Group & Role
- Page 6 : Security Services
- Page 7 : Authorization
- Page 8 : Identity
- Page 9 : Account
- Page 10 : Credential
- Page 11 : Kerberos
- Page 12 : Public Key
- Page 13 : Shared Secret
- Page 14 : User Associations
- Page 15 : Security Associations
- Page 16 : Aggregations
- Page 17 : Deprecated Access Control
- Page 18 : Deprecated Authentication
- Page 19 : Deprecated User Access
- Page 20 : Deprecated Dependency

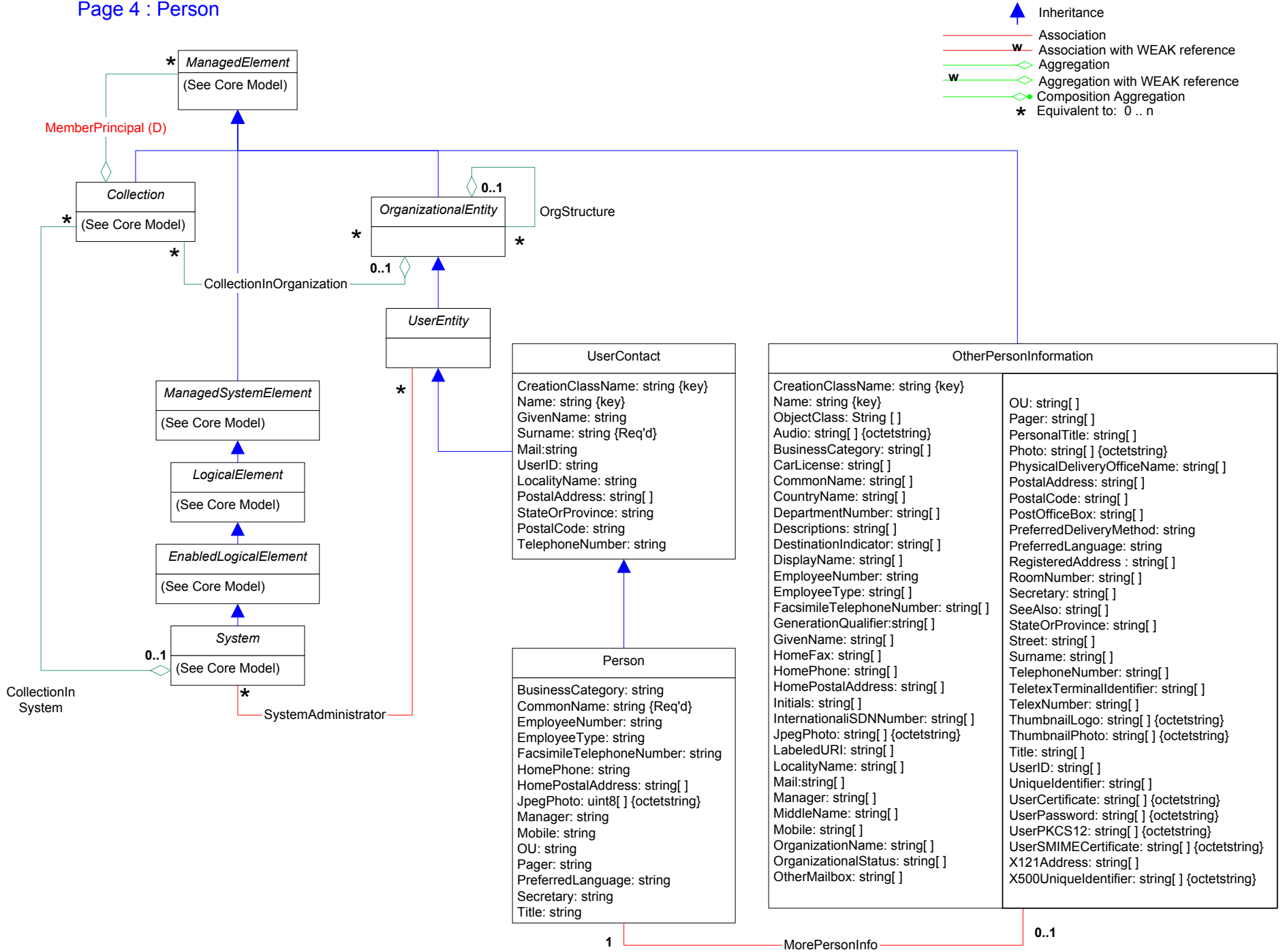


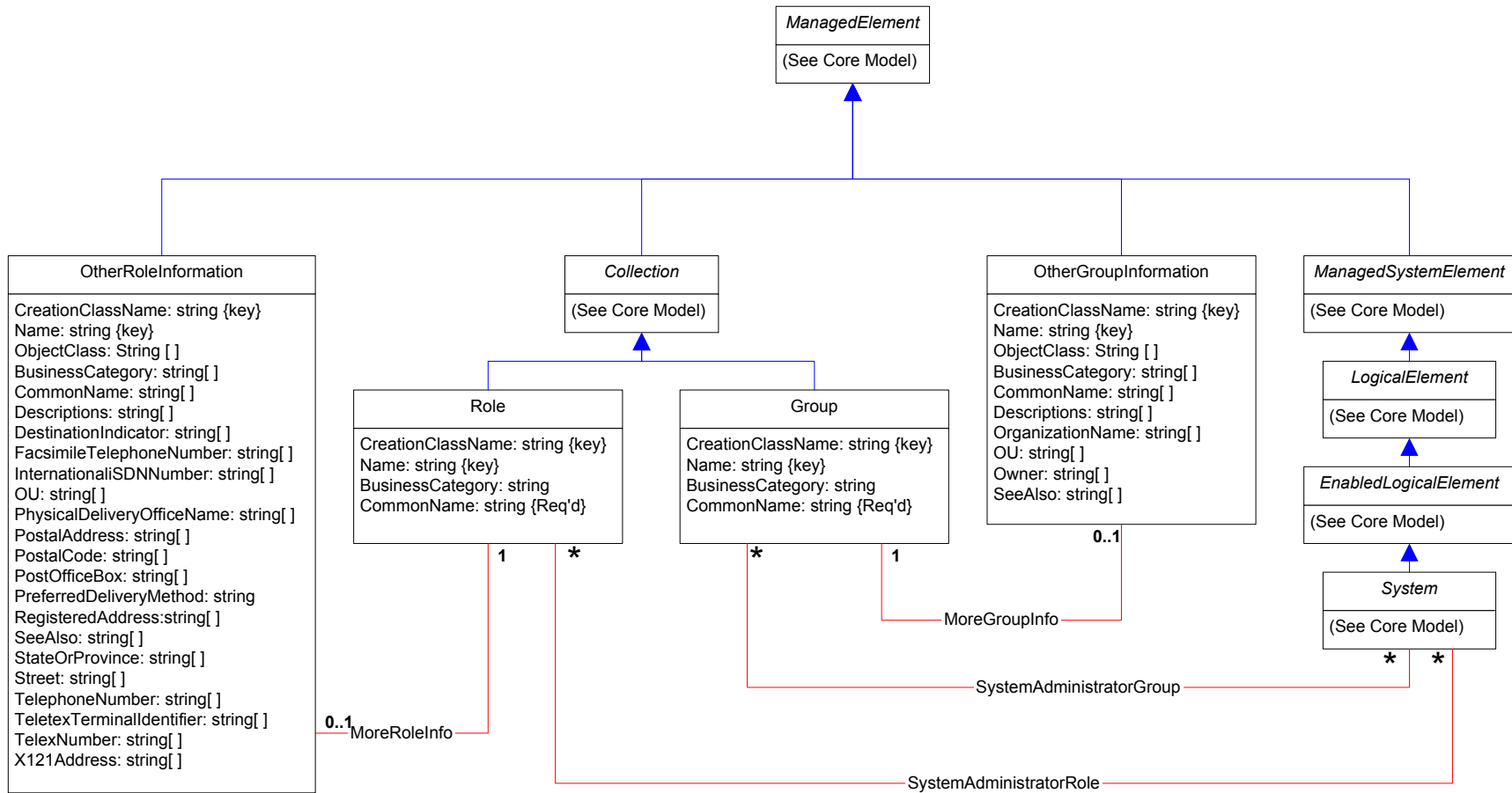
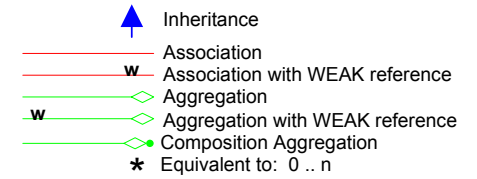
Page 2 : Overview Security

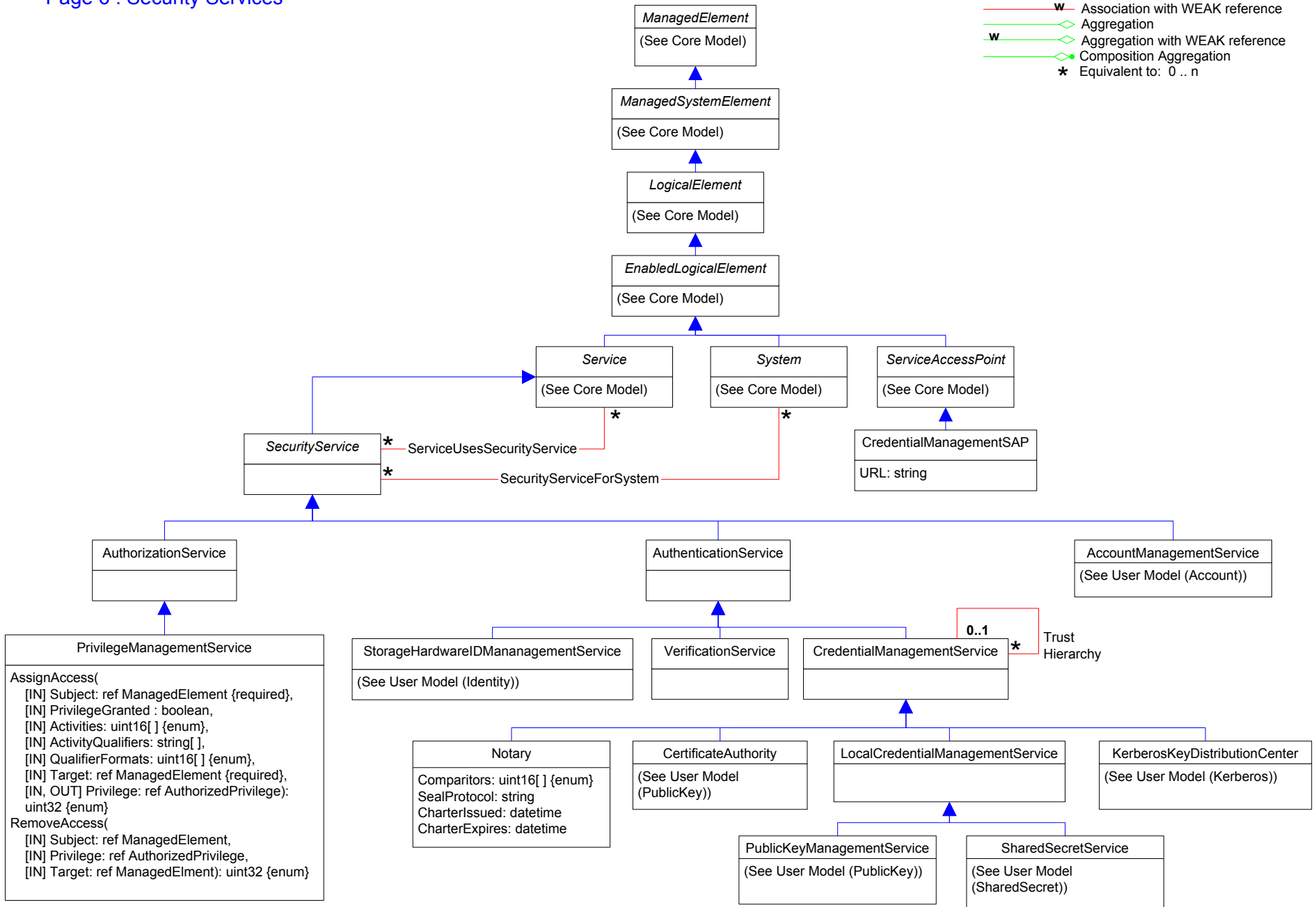
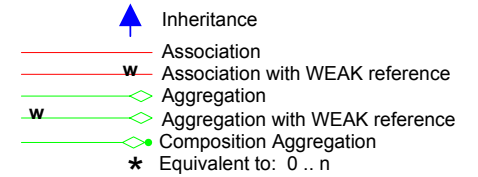
-  Inheritance
-  Association
-  Association with WEAK reference
-  Aggregation
-  Aggregation with WEAK reference
-  Composition Aggregation
-  Equivalent to: 0..n

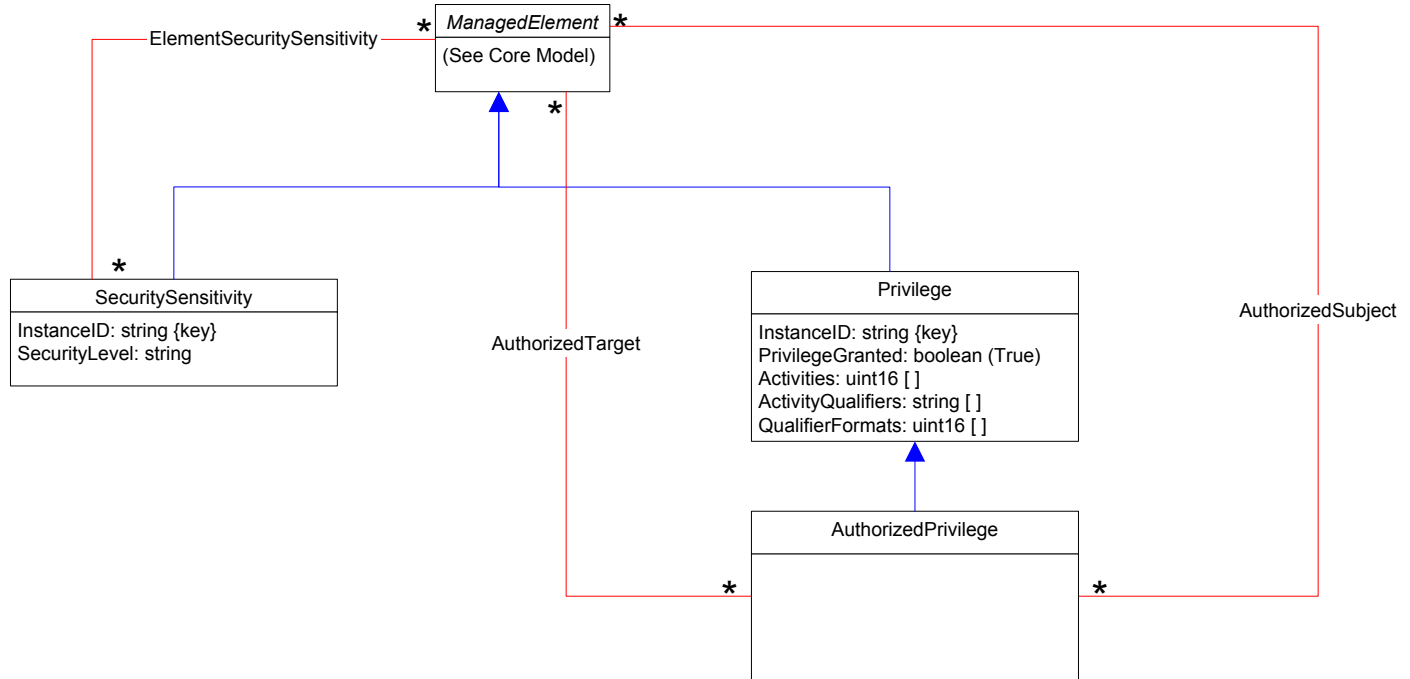
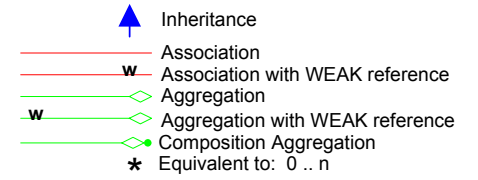




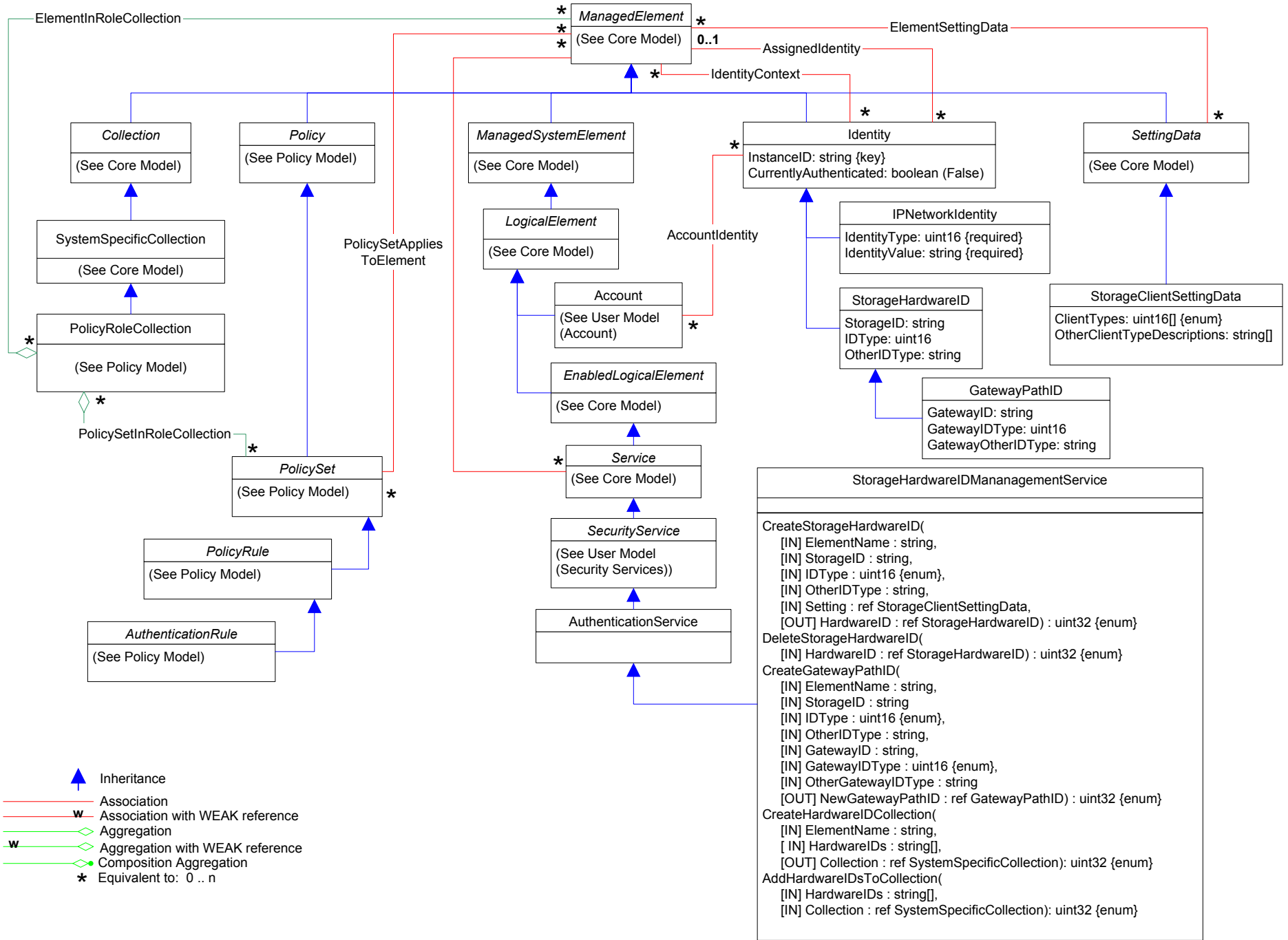






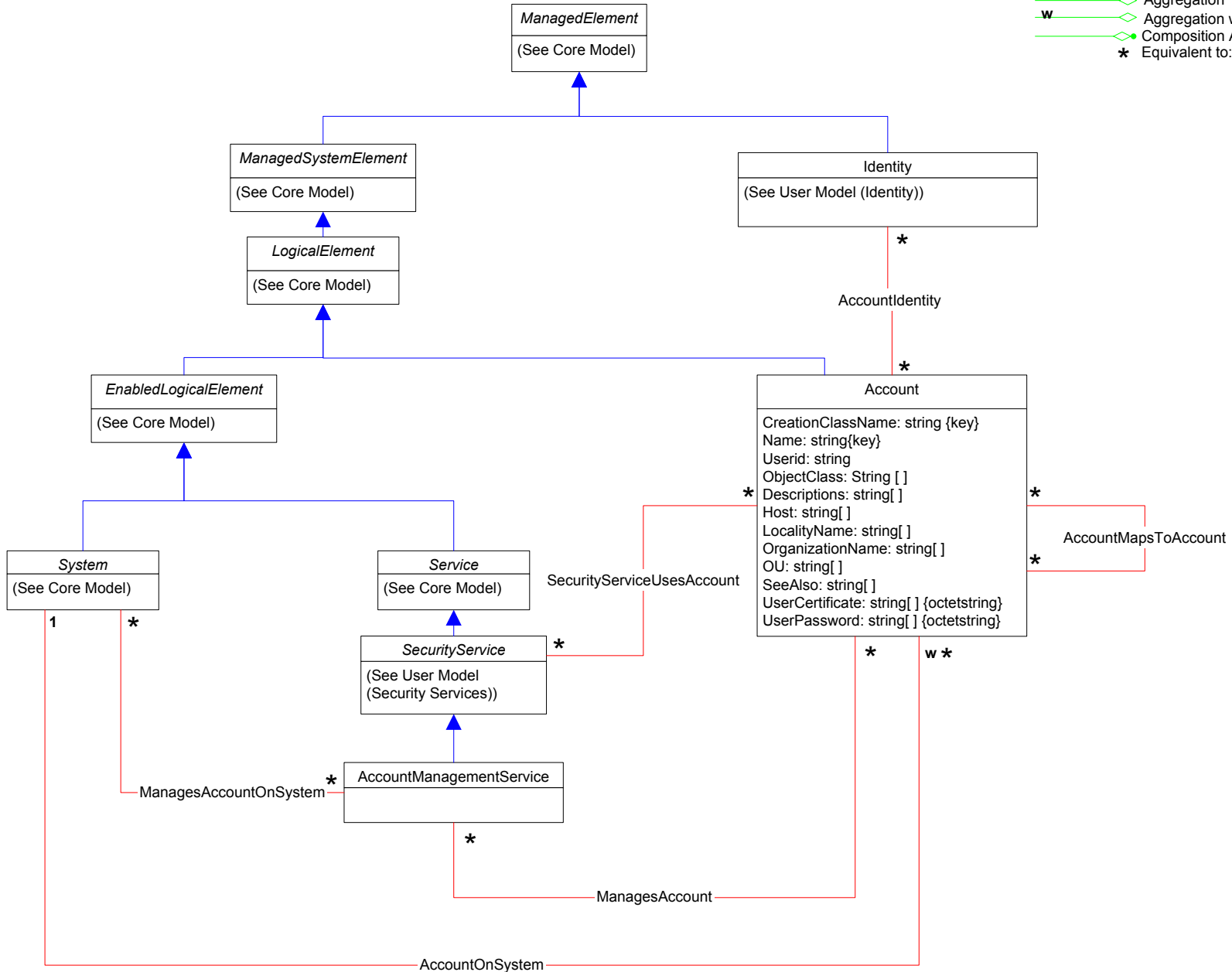
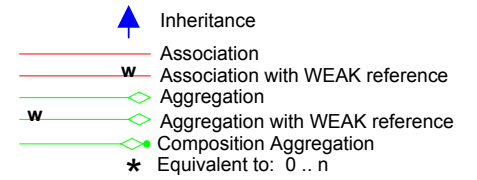


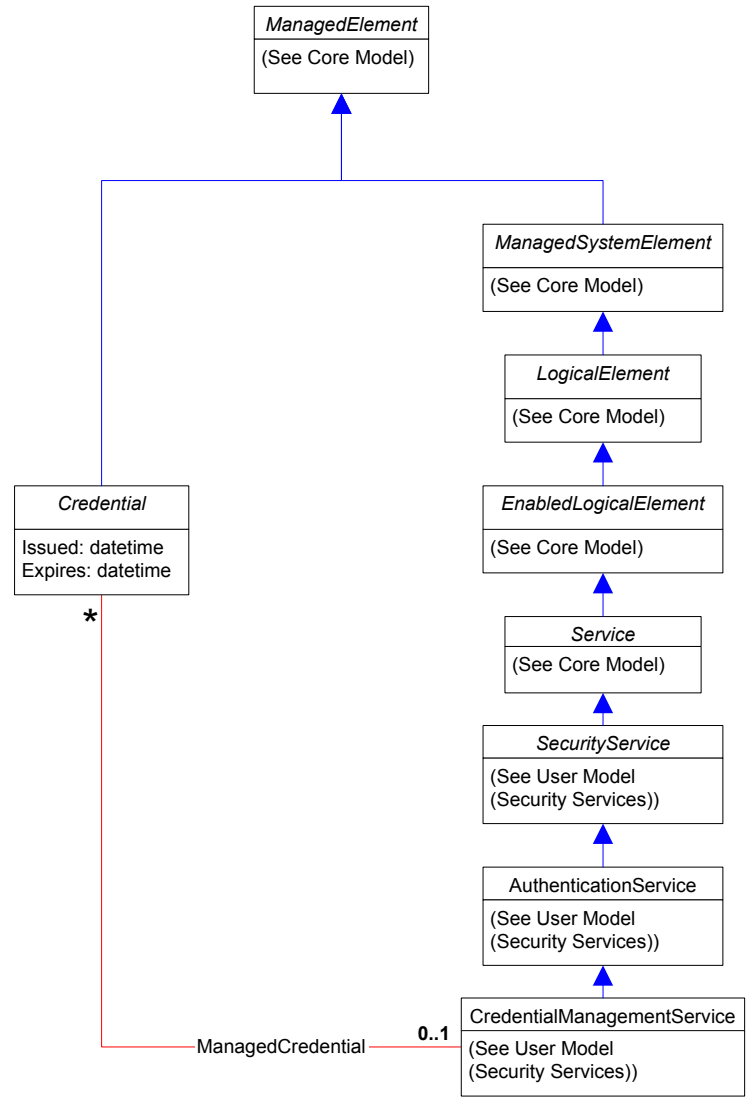
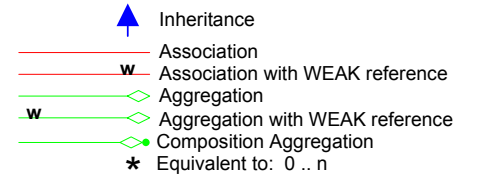
Page 8 : Identity

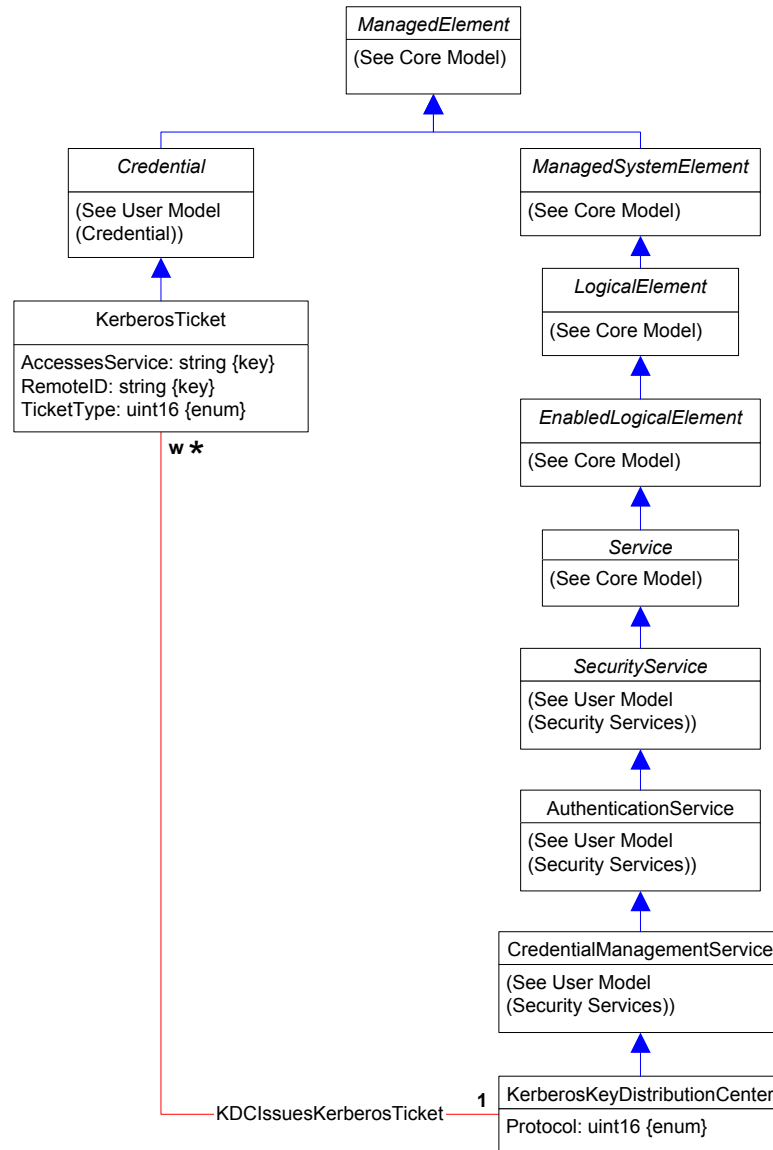
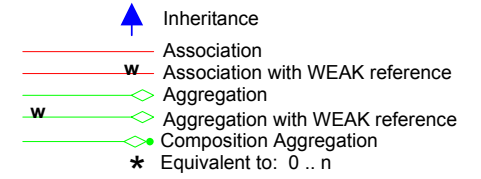


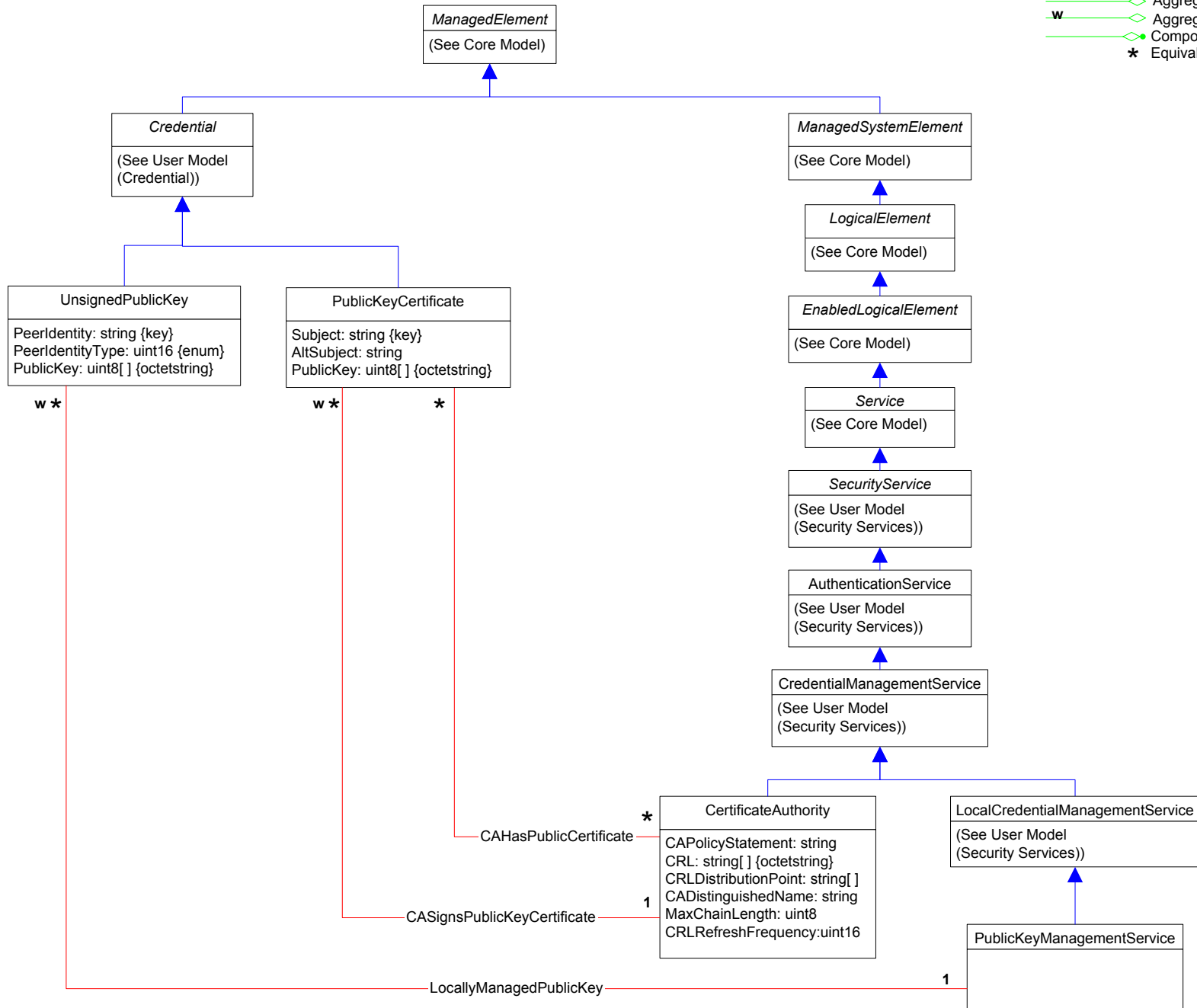
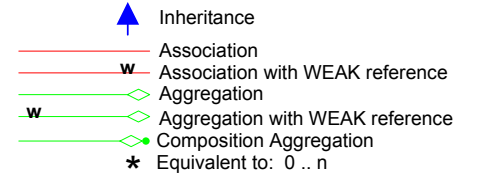
```

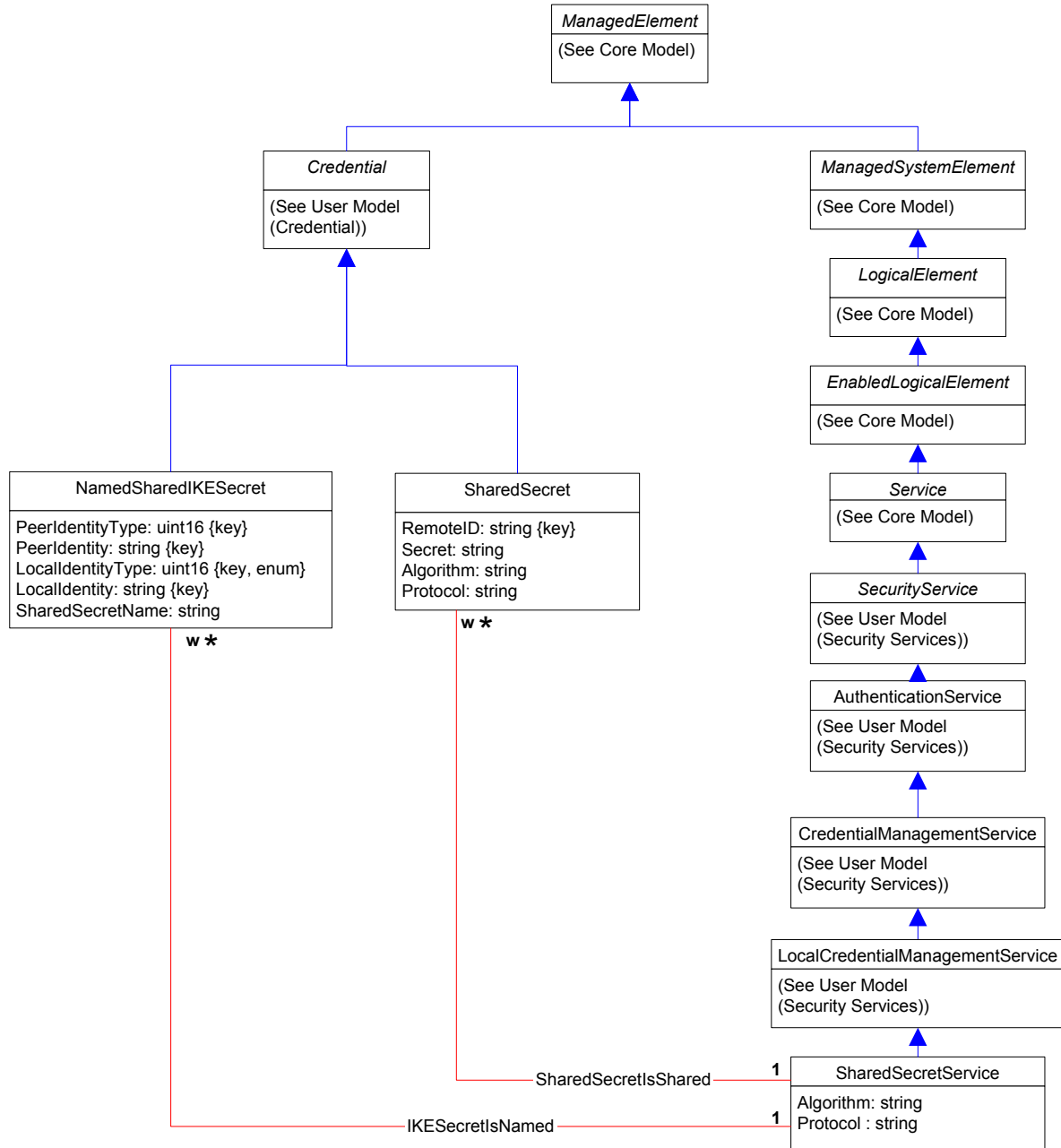
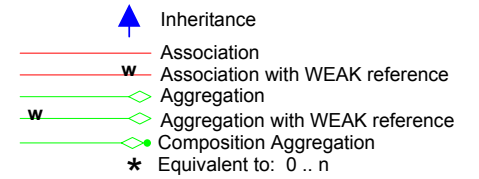
StorageHardwareIDManagementService
CreateStorageHardwareID(
    [IN] ElementName : string,
    [IN] StorageID : string,
    [IN] IDType : uint16 {enum},
    [IN] OtherIDType : string,
    [IN] Setting : ref StorageClientSettingData,
    [OUT] HardwareID : ref StorageHardwareID) : uint32 {enum}
DeleteStorageHardwareID(
    [IN] HardwareID : ref StorageHardwareID) : uint32 {enum}
CreateGatewayPathID(
    [IN] ElementName : string,
    [IN] StorageID : string,
    [IN] IDType : uint16 {enum},
    [IN] OtherIDType : string,
    [IN] GatewayID : string,
    [IN] GatewayIDType : uint16 {enum},
    [IN] OtherGatewayIDType : string,
    [OUT] NewGatewayPathID : ref GatewayPathID) : uint32 {enum}
CreateHardwareIDCollection(
    [IN] ElementName : string,
    [IN] HardwareIDs : string[],
    [OUT] Collection : ref SystemSpecificCollection) : uint32 {enum}
AddHardwareIDsToCollection(
    [IN] HardwareIDs : string[],
    [IN] Collection : ref SystemSpecificCollection) : uint32 {enum}
  
```

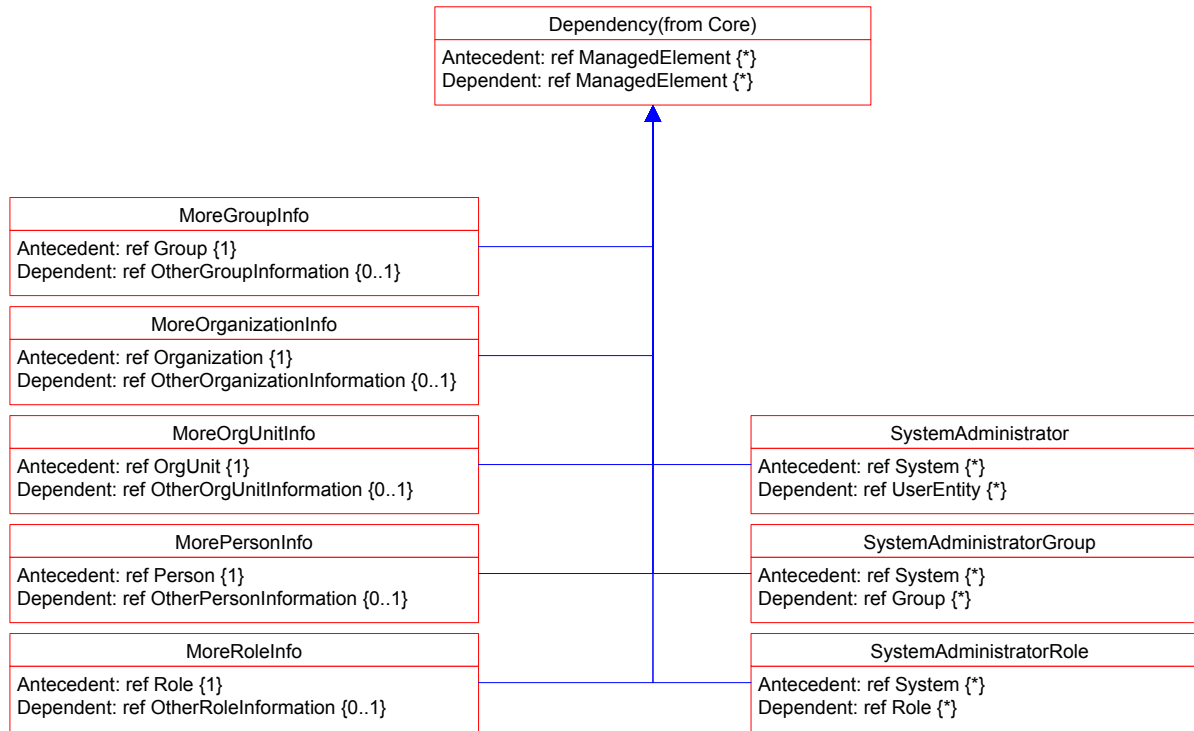
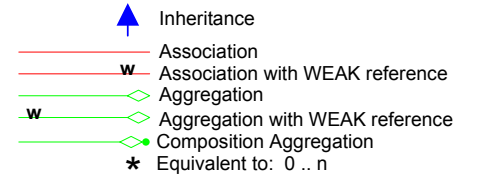













Page 15 : Security Associations

