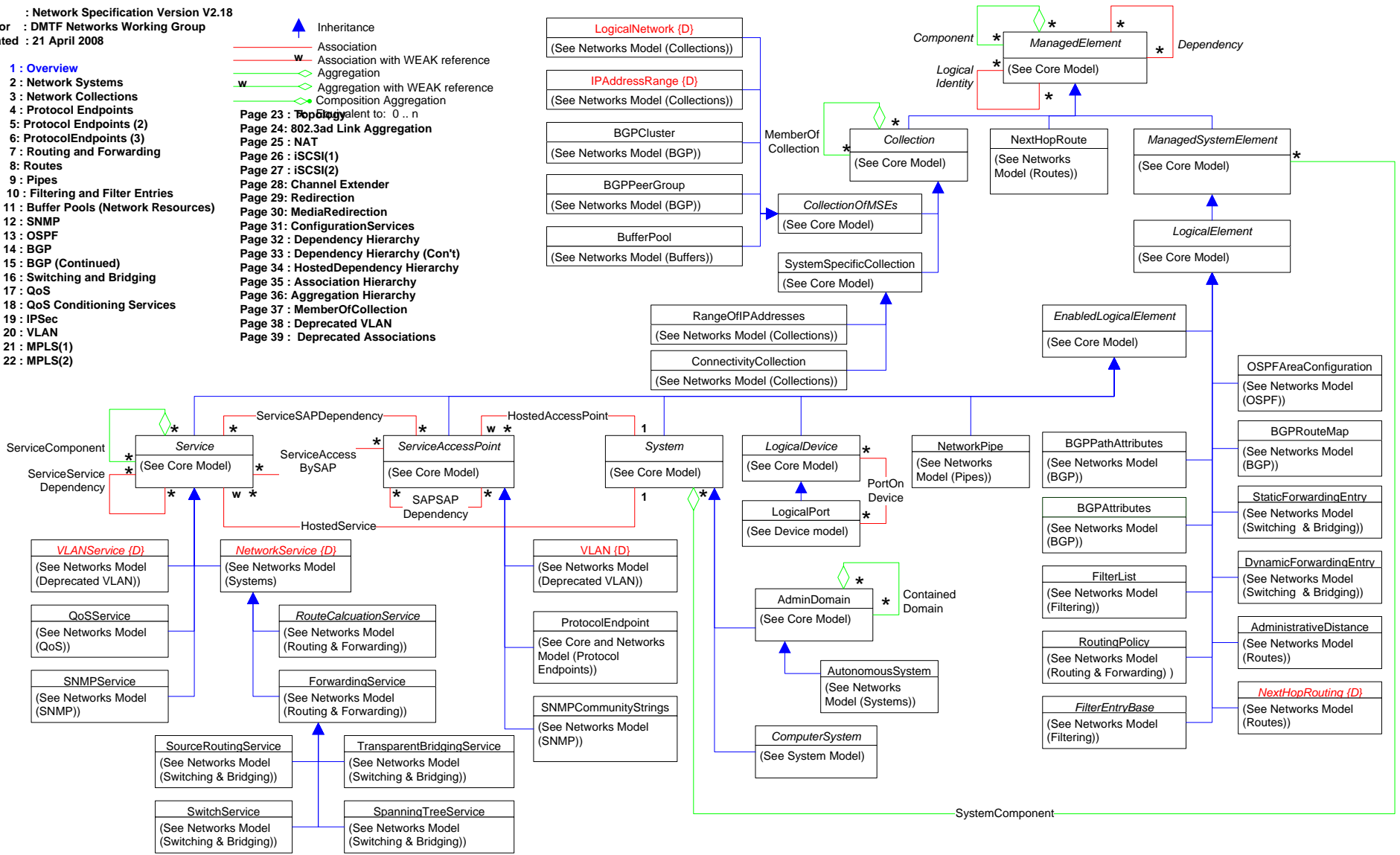


Title : Network Specification Version V2.18
 Author : DMTF Networks Working Group
 Updated : 21 April 2008


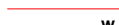

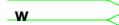



Page 1: Overview

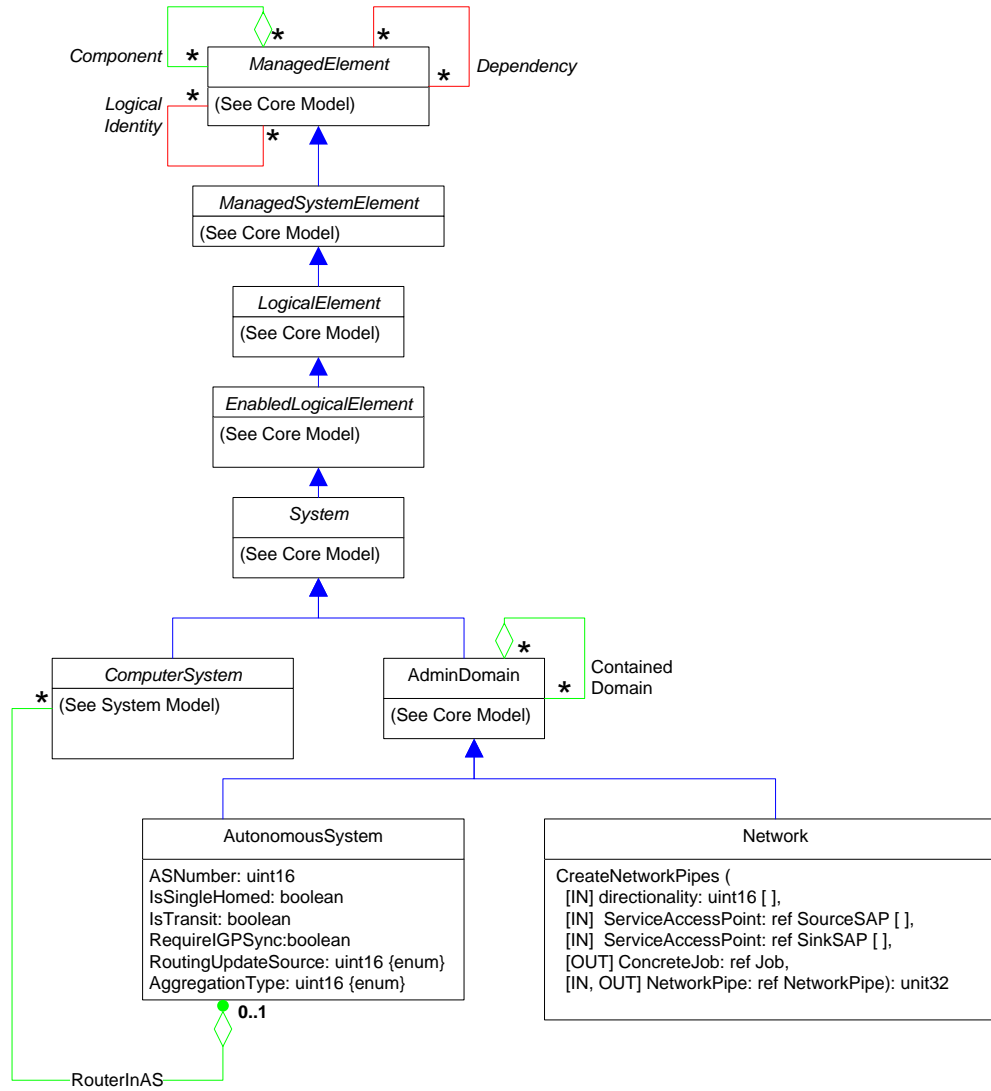
- Page 2: Network Systems
- Page 3: Network Collections
- Page 4: Protocol Endpoints
- Page 5: Protocol Endpoints (2)
- Page 6: ProtocolEndpoints (3)
- Page 7: Routing and Forwarding
- Page 8: Routes
- Page 9: Pipes
- Page 10: Filtering and Filter Entries
- Page 11: Buffer Pools (Network Resources)
- Page 12: SNMP
- Page 13: OSPF
- Page 14: BGP
- Page 15: BGP (Continued)
- Page 16: Switching and Bridging
- Page 17: QoS
- Page 18: QoS Conditioning Services
- Page 19: IPsec
- Page 20: VLAN
- Page 21: MPLS(1)
- Page 22: MPLS(2)

- ▲ Inheritance
- Association
- w Association with WEAK reference
- ◇ Aggregation
- w◇ Aggregation with WEAK reference
- ◇ Composition Aggregation
- ◇ Composition Aggregation to: 0..n
- Page 23: Topology
- Page 24: 802.3ad Link Aggregation
- Page 25: NAT
- Page 26: iSCSI(1)
- Page 27: iSCSI(2)
- Page 28: Channel Extender
- Page 29: Redirection
- Page 30: MediaRedirection
- Page 31: ConfigurationServices
- Page 32: Dependency Hierarchy
- Page 33: Dependency Hierarchy (Con't)
- Page 34: HostedDependency Hierarchy
- Page 35: Association Hierarchy
- Page 36: Aggregation Hierarchy
- Page 37: MemberOfCollection
- Page 38: Deprecated VLAN
- Page 39: Deprecated Associations



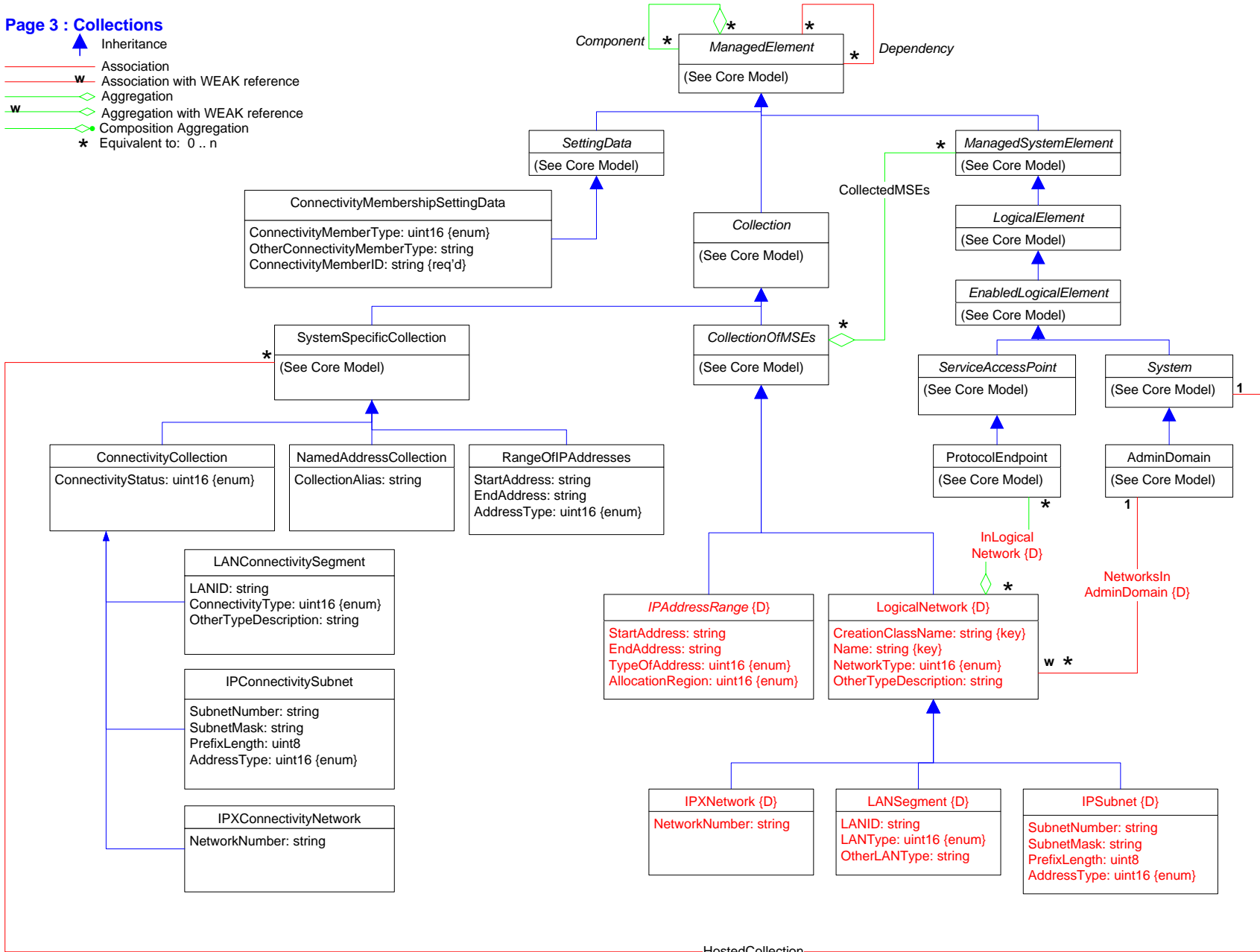
Page 2 : Network Systems

-  Inheritance
-  Association
-  Association with WEAK reference
-  Aggregation
-  Aggregation with WEAK reference
-  Composition Aggregation
-  Equivalent to: 0..n



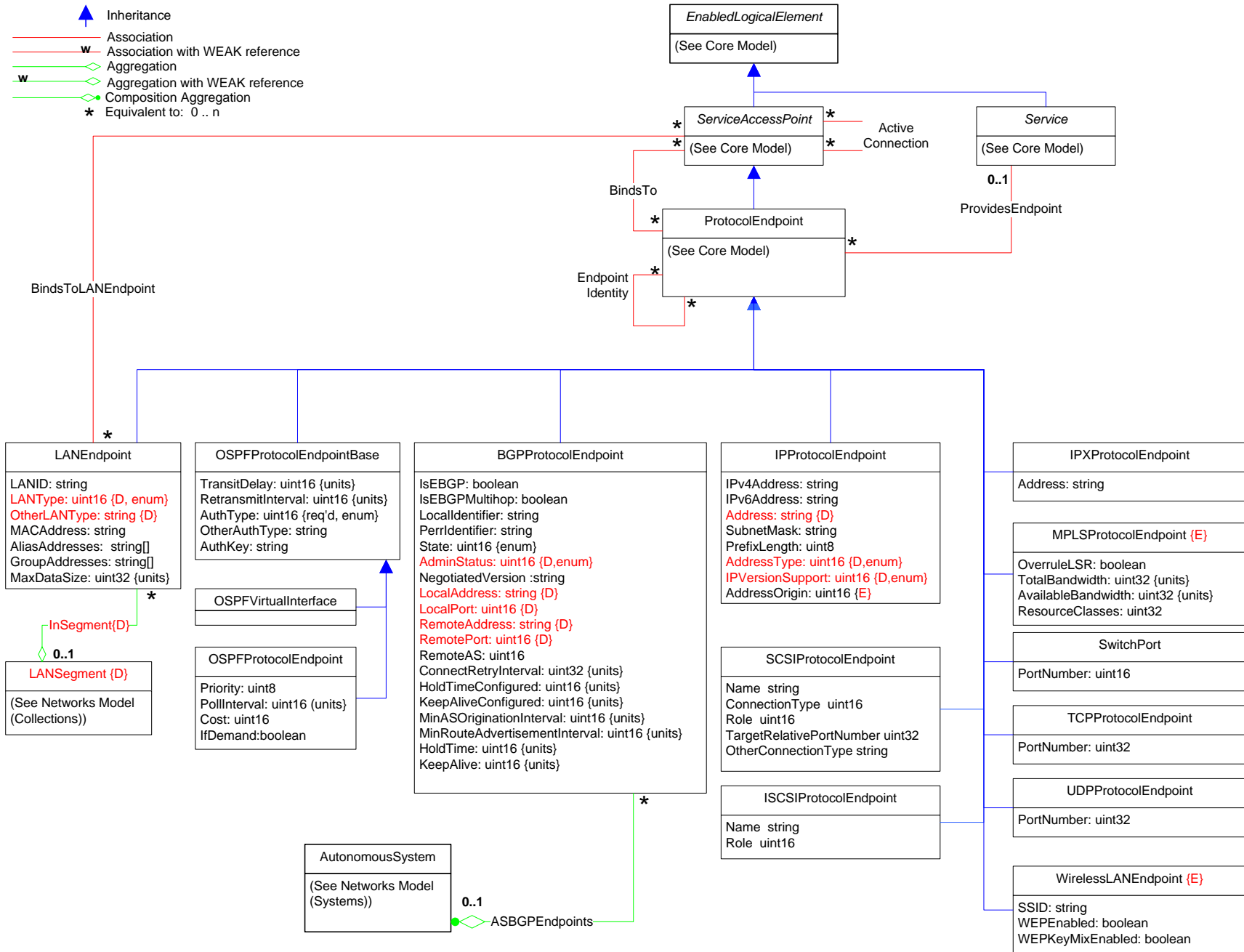
Page 3 : Collections

- ▲ Inheritance
- Association
- w Association with WEAK reference
- ◇ Aggregation
- w◇ Aggregation with WEAK reference
- ◊ Composition Aggregation
- * Equivalent to: 0..n

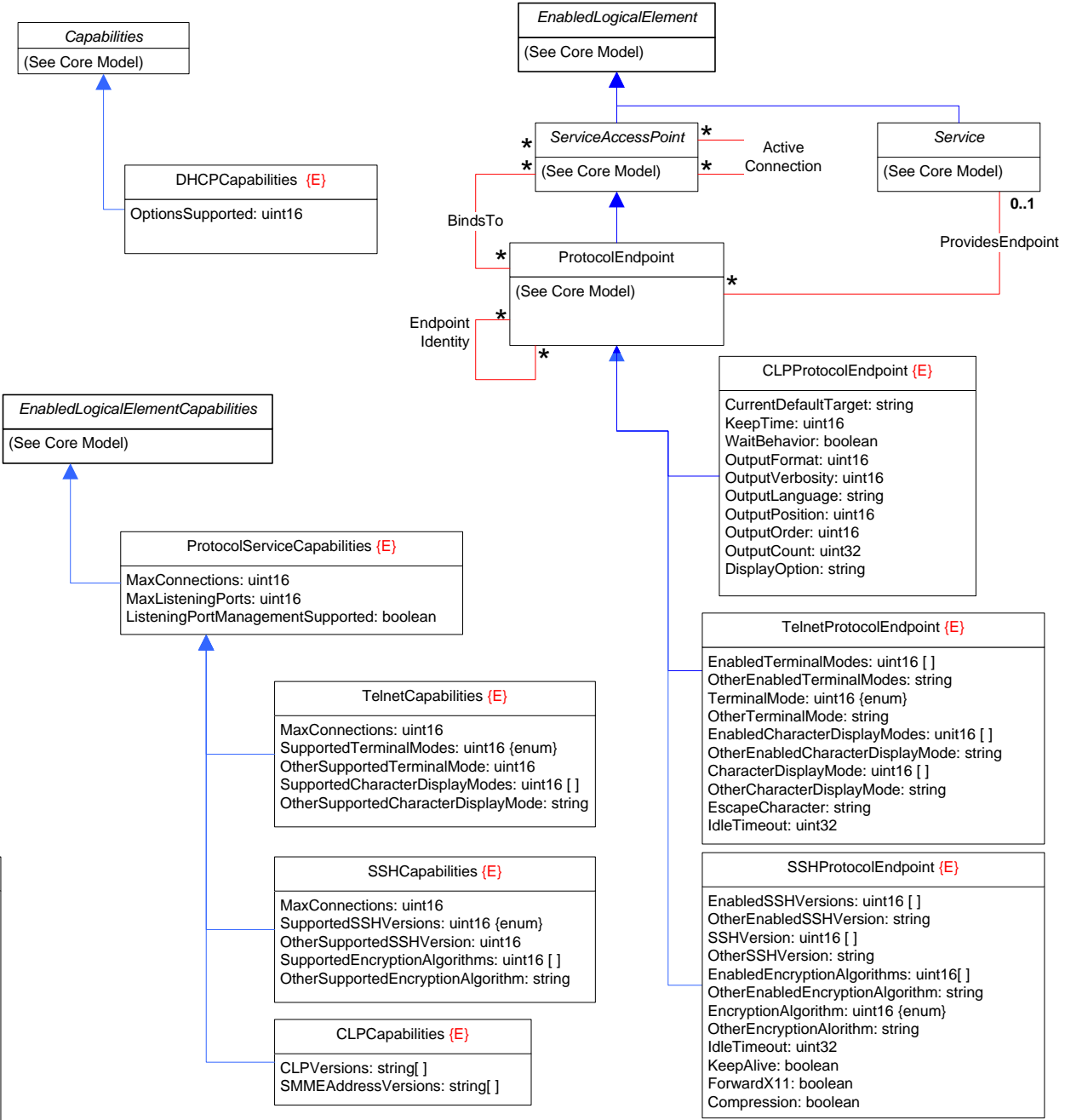
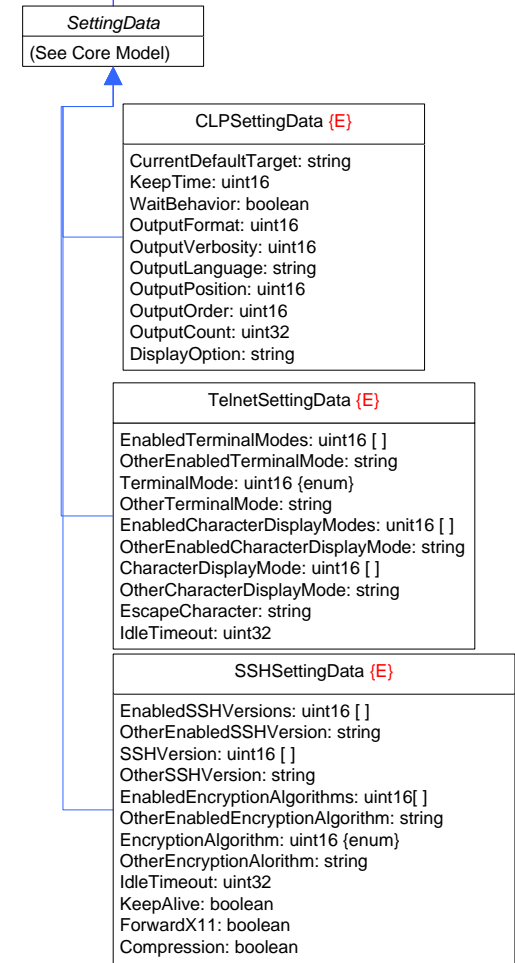
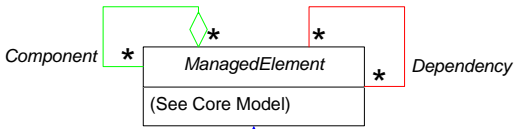
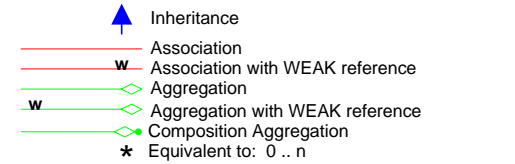


Page 4 : Protocol Endpoints







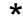
- ▲ Inheritance
- Association
- w Association with WEAK reference
- ◇ Aggregation
- w◇ Aggregation with WEAK reference
- Composition Aggregation
- * Equivalent to: 0..n

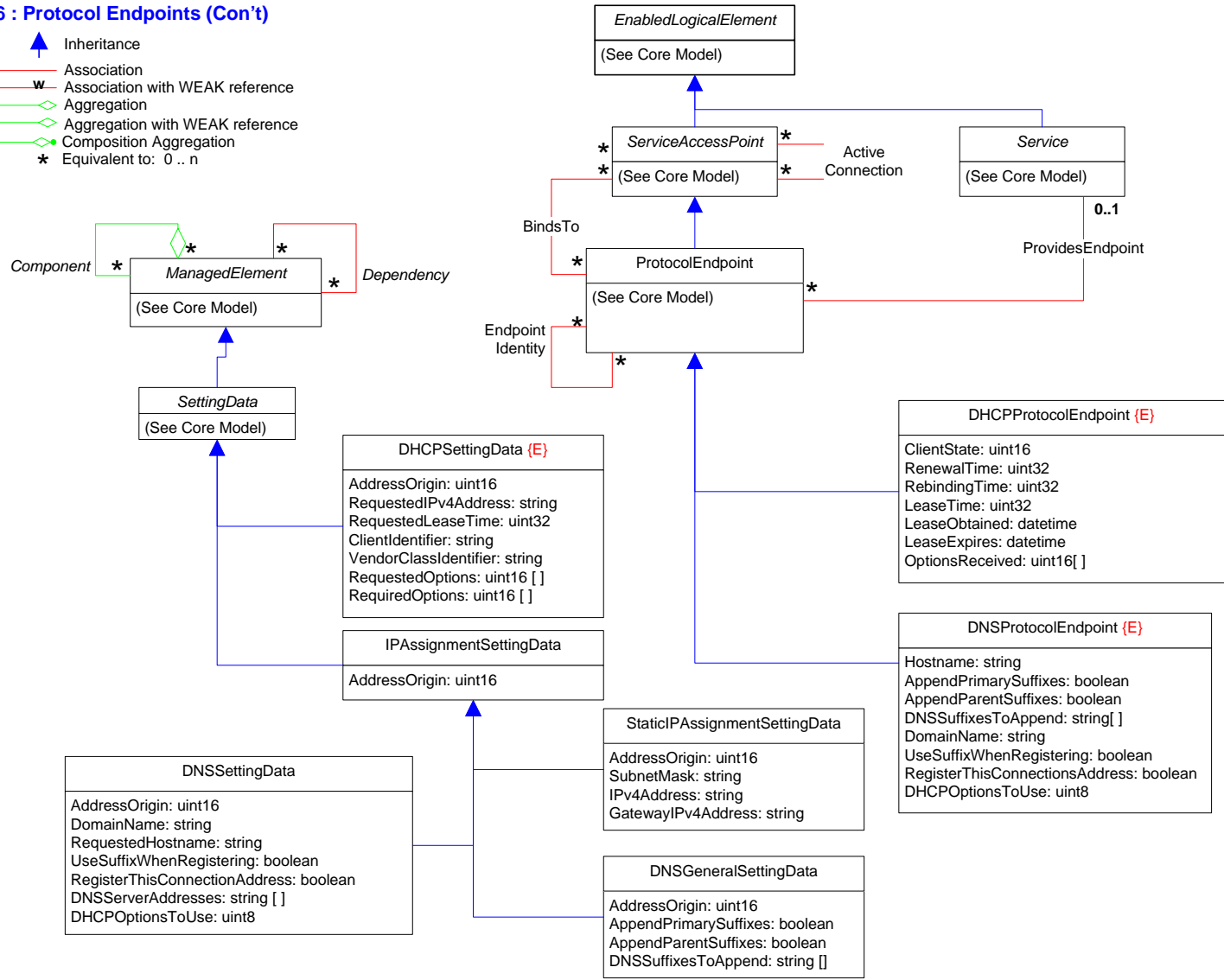


Page 5 : Protocol Endpoints (Con't)



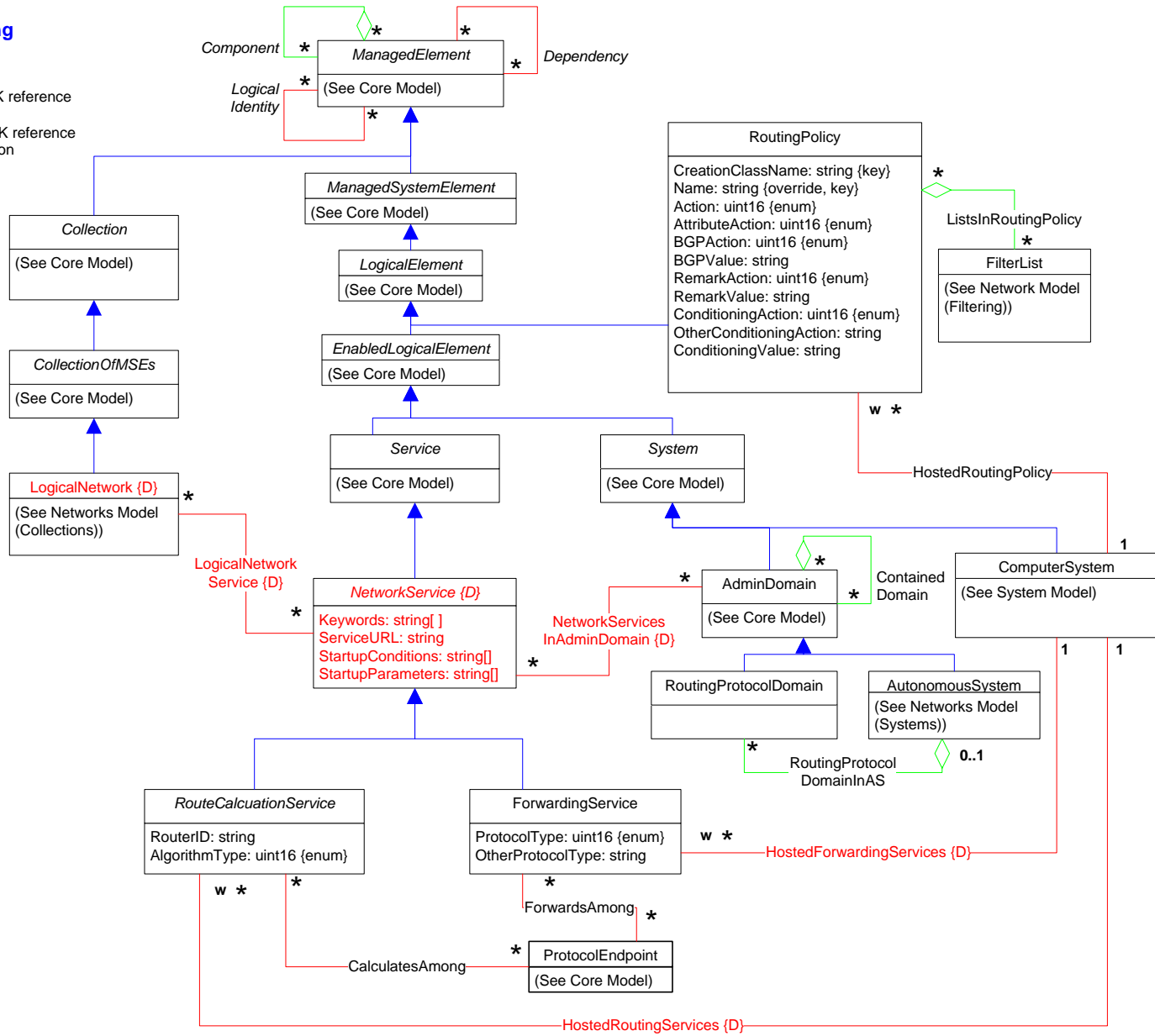
Page 6 : Protocol Endpoints (Con't)

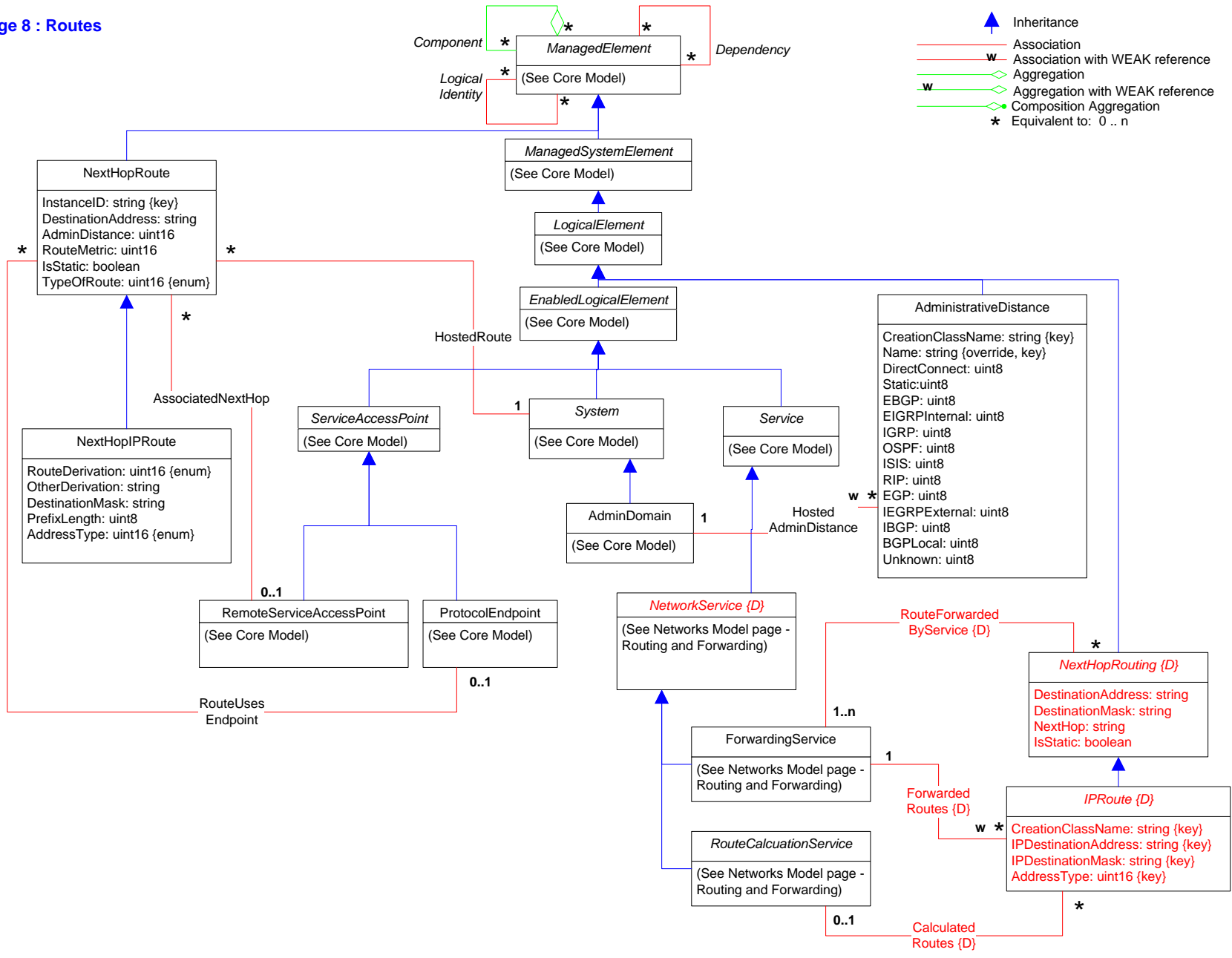
-  Inheritance
-  Association
-  Association with WEAK reference
-  Aggregation
-  Aggregation with WEAK reference
-  Composition Aggregation
-  Equivalent to: 0..n










Page 7 : Routing & Forwarding

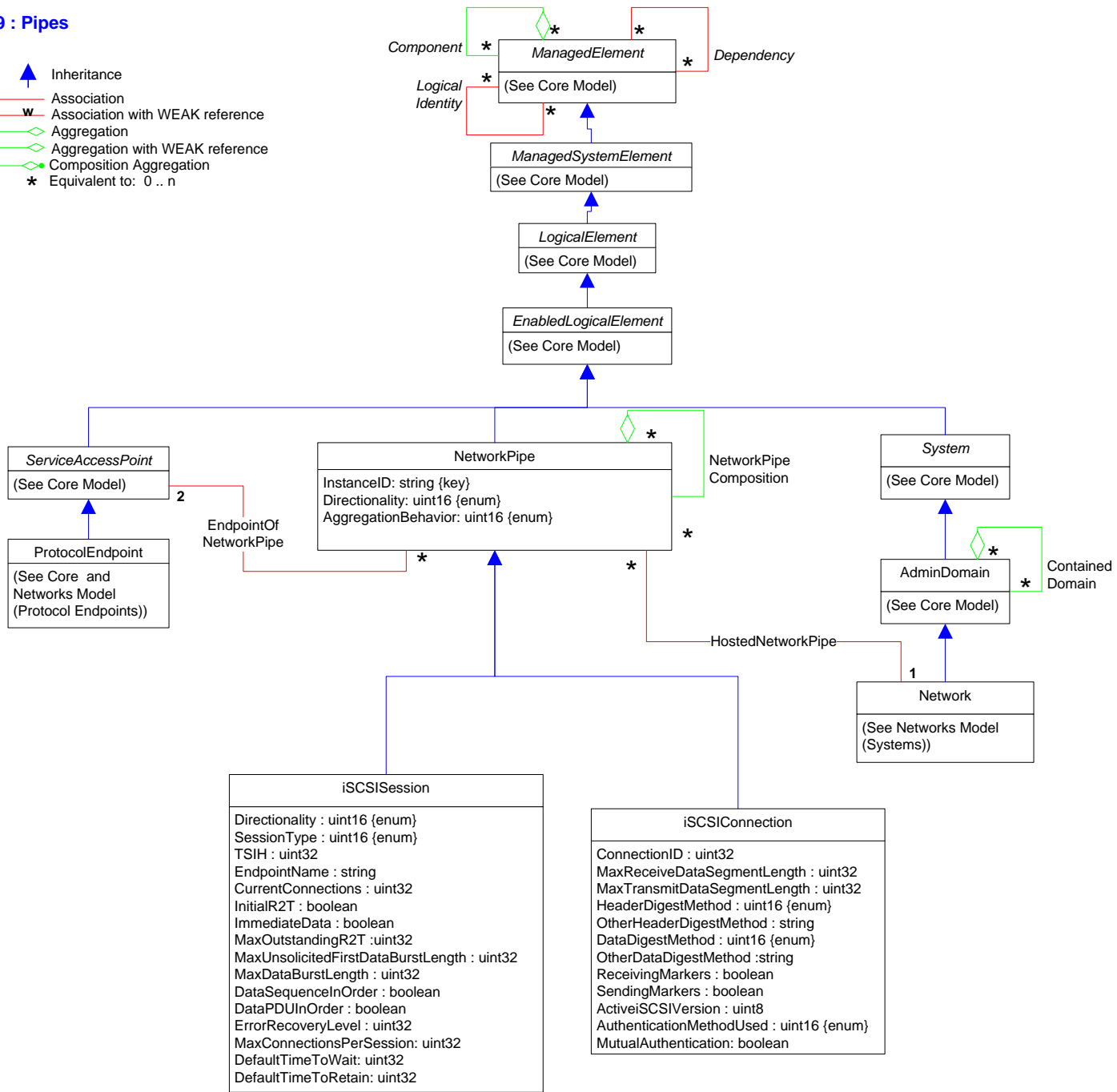
- Inheritance
- Association
- Association with WEAK reference
- Aggregation
- Aggregation with WEAK reference
- Composition Aggregation
- Equivalent to: 0 .. n












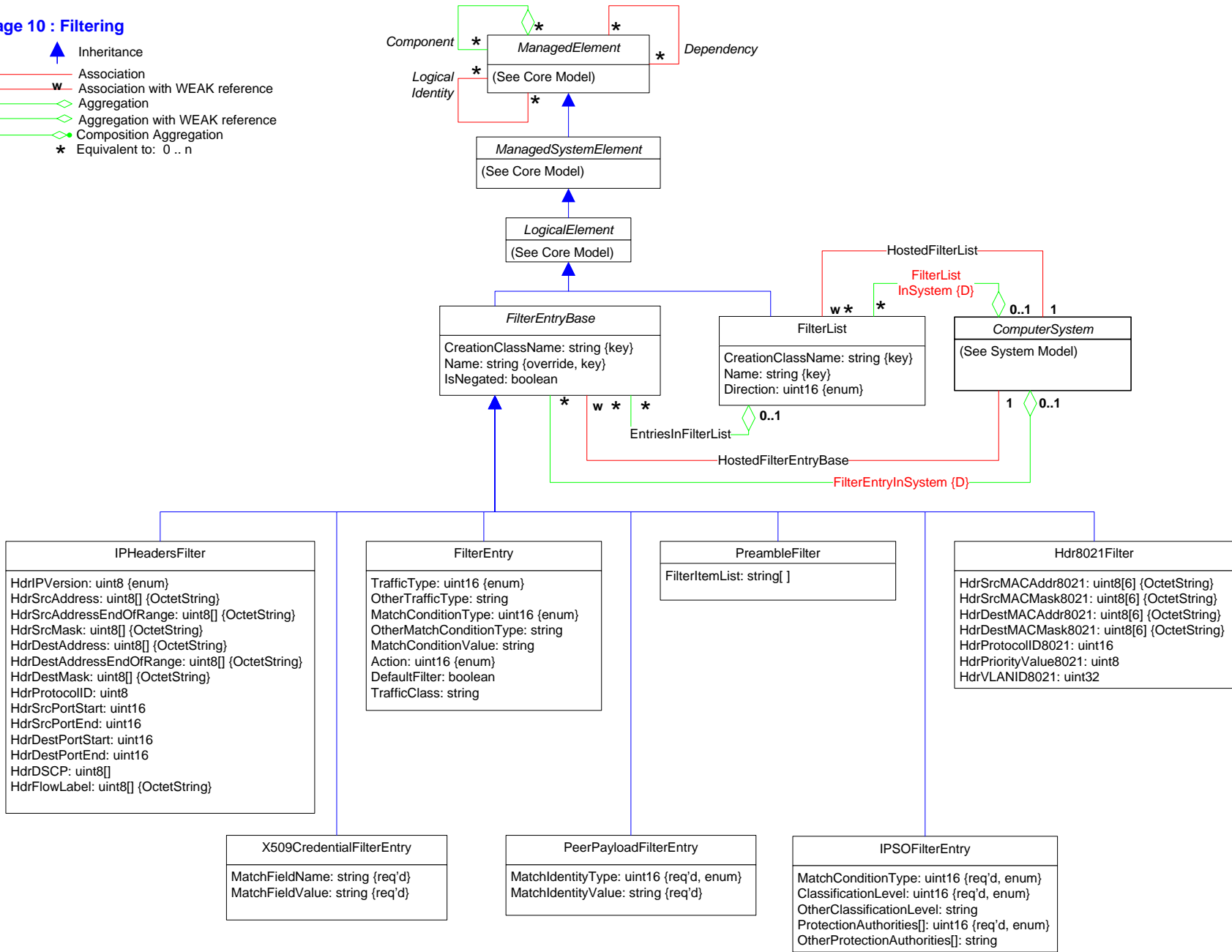
Page 9 : Pipes

-  Inheritance
-  Association
-  Association with WEAK reference
-  Aggregation
-  Aggregation with WEAK reference
-  Composition Aggregation
-  Equivalent to: 0..n










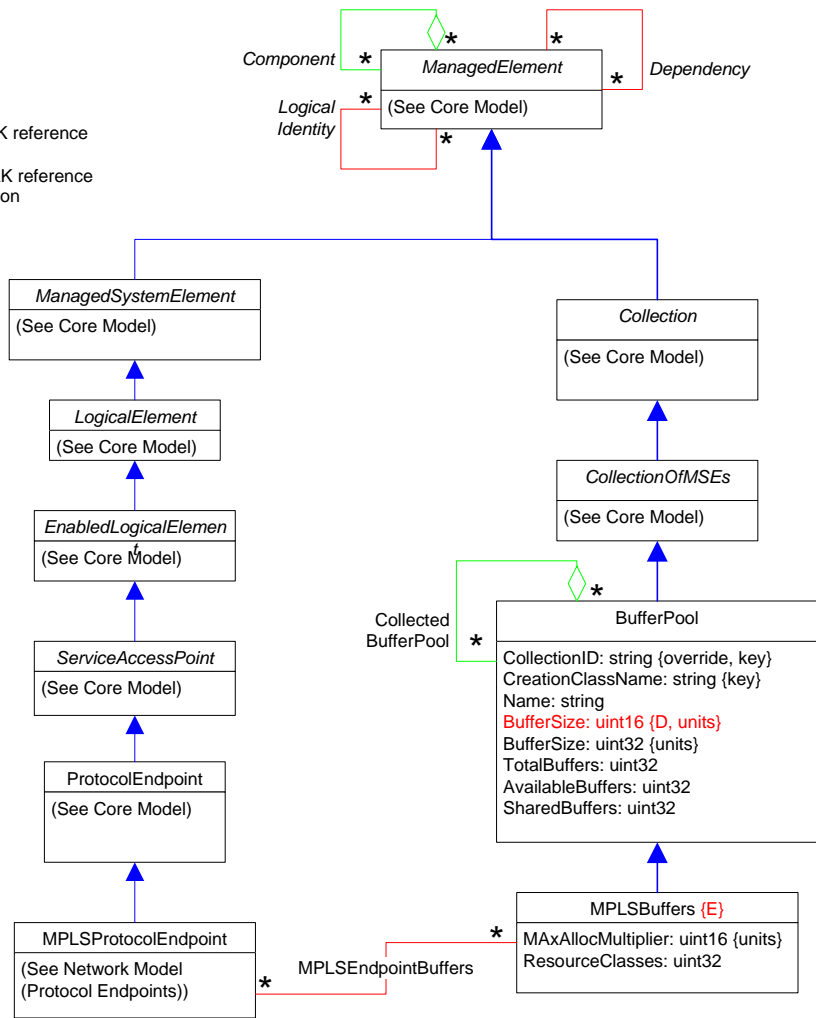
Page 10 : Filtering

-  Inheritance
-  Association
-  Association with WEAK reference
-  Aggregation
-  Aggregation with WEAK reference
-  Composition Aggregation
-  * Equivalent to: 0 .. n





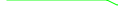




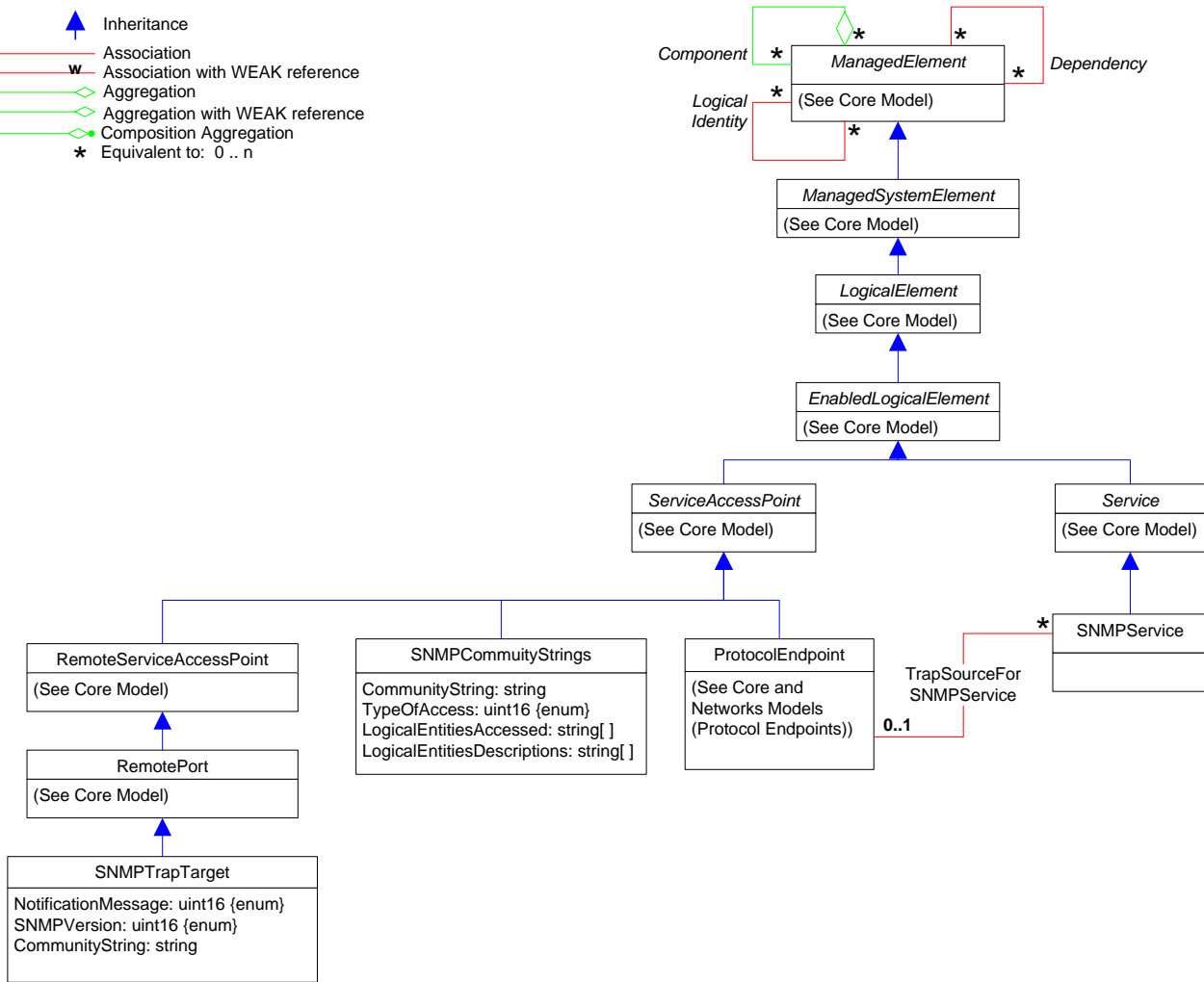
Page 11 : Buffers

-  Inheritance
-  Association
-  Association with WEAK reference
-  Aggregation
-  Aggregation with WEAK reference
-  Composition Aggregation
-  Equivalent to: 0 .. n



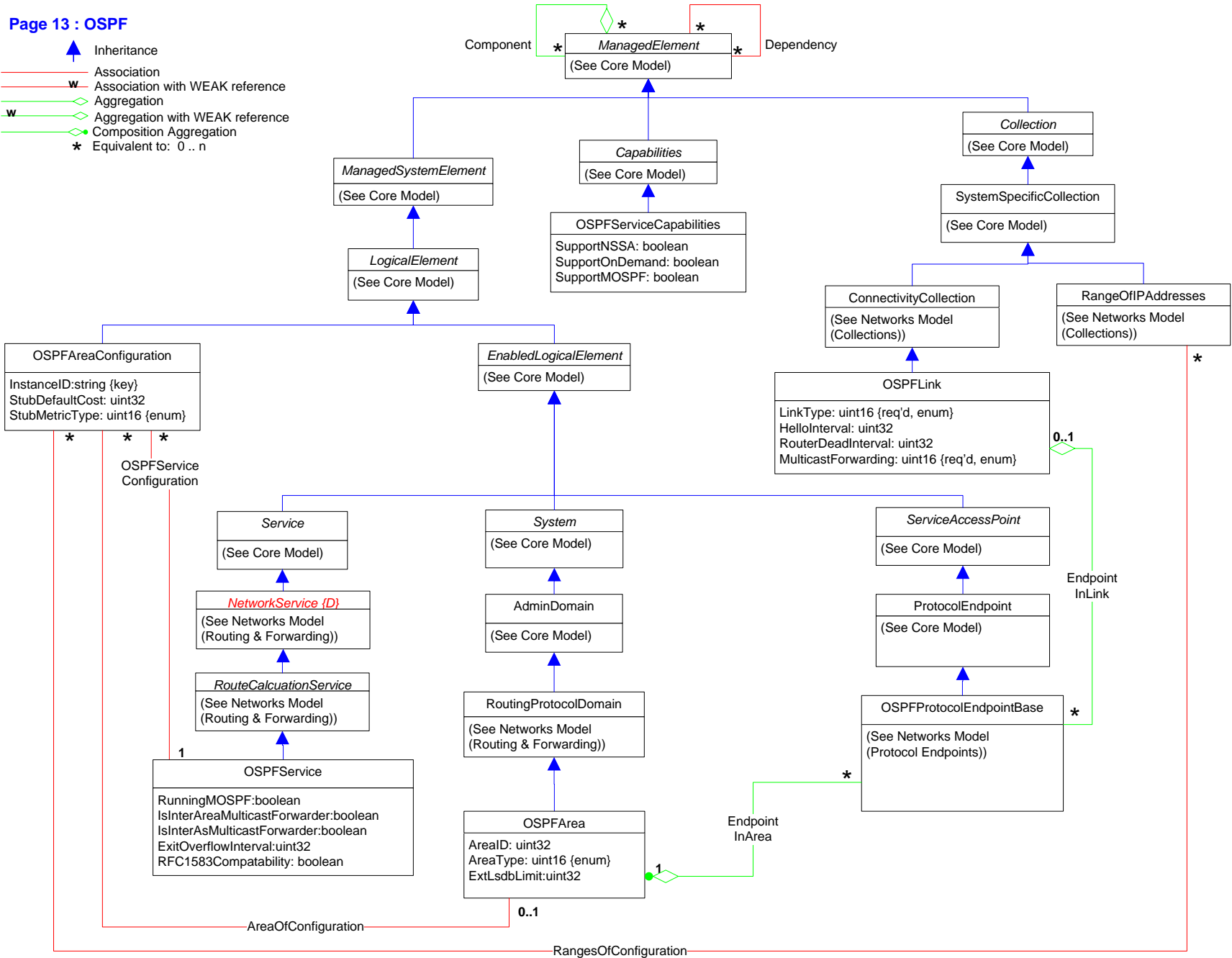
Page 12 : SNMP

-  Inheritance
-  Association
-  Association with WEAK reference
-  Aggregation
-  Aggregation with WEAK reference
-  Composition Aggregation
-  Equivalent to: 0 .. n



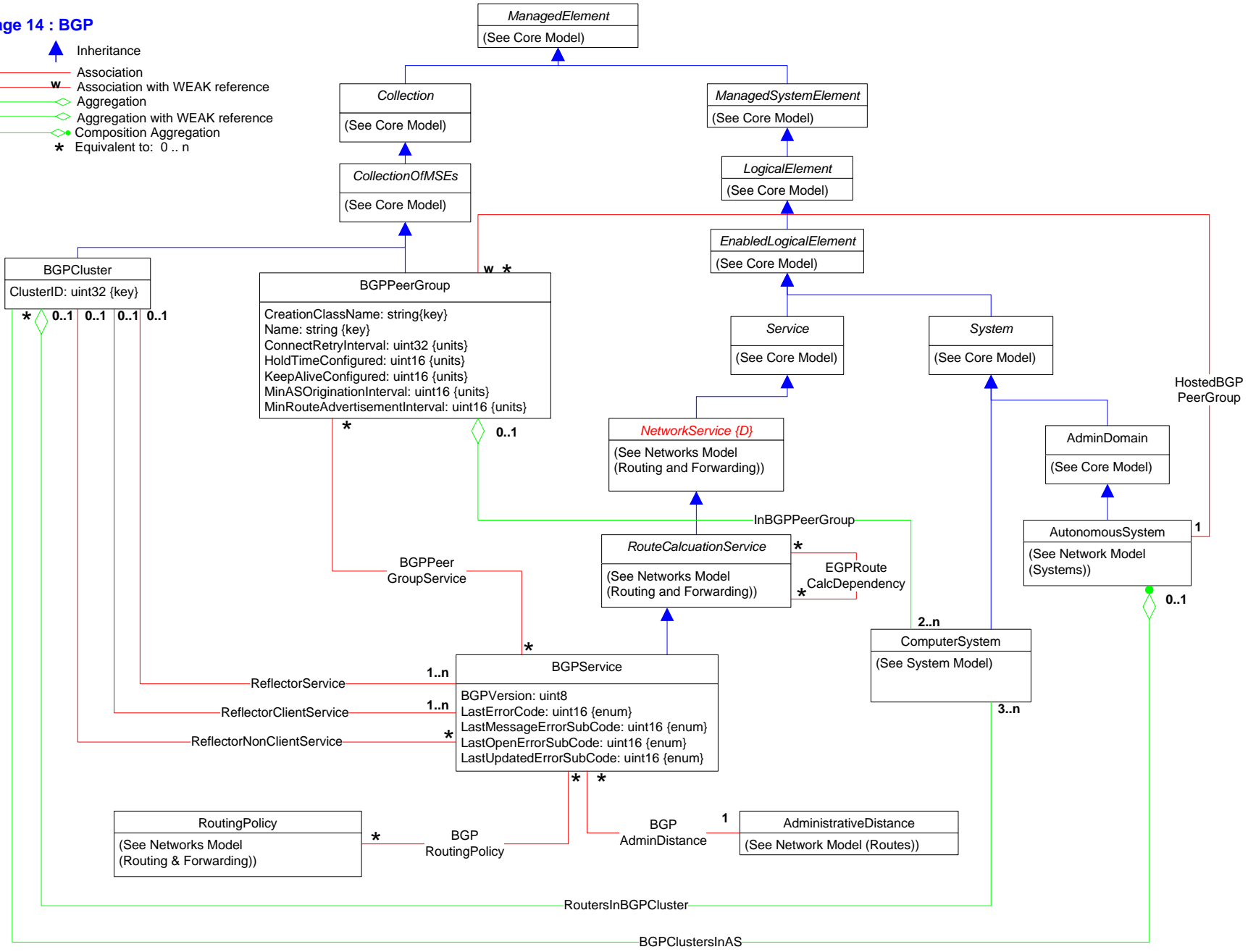
Page 13 : OSPF

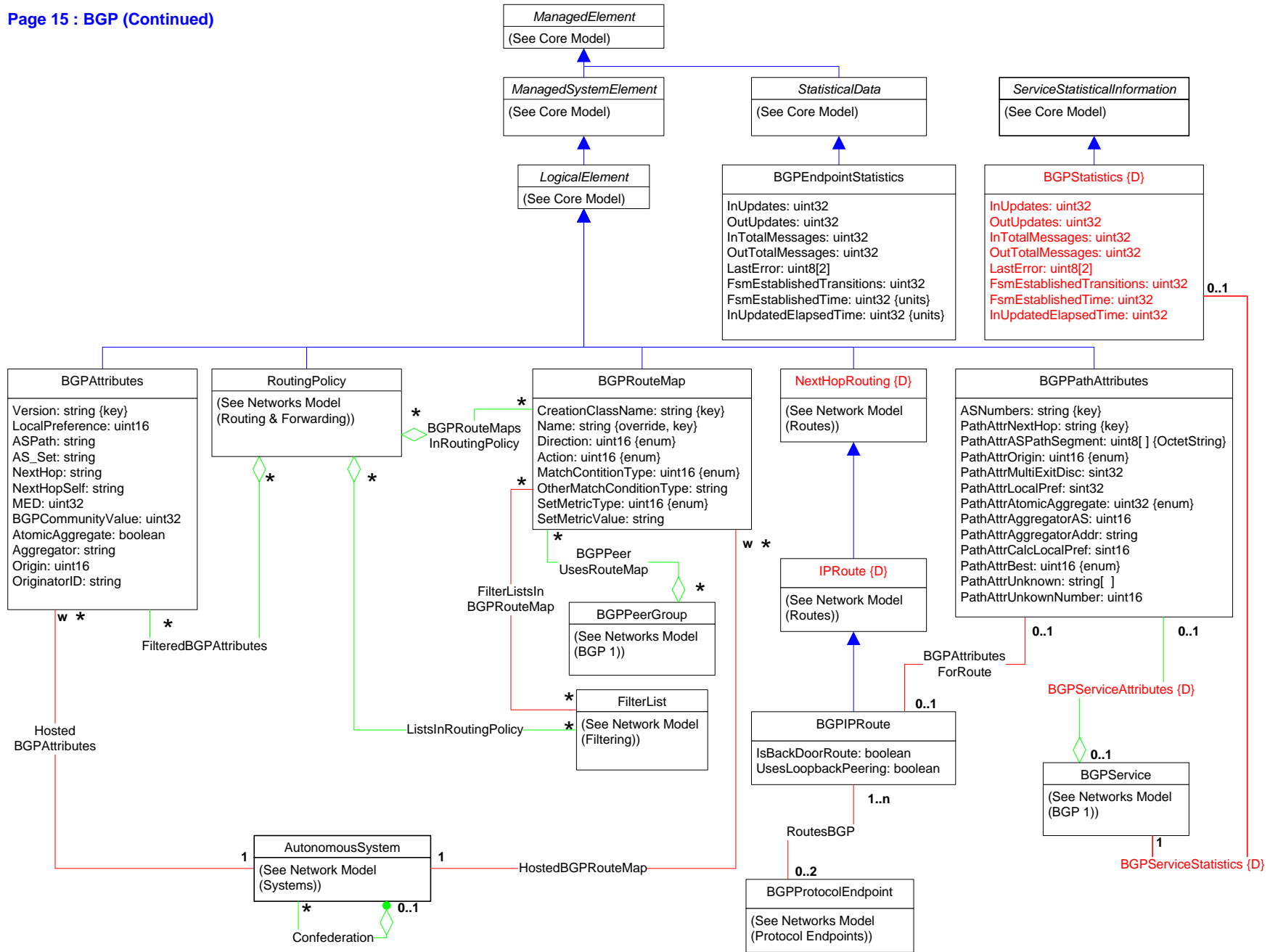
- Inheritance
- Association
- Association with WEAK reference
- Aggregation
- Aggregation with WEAK reference
- Composition Aggregation
- Equivalent to: 0..n










Page 14 : BGP

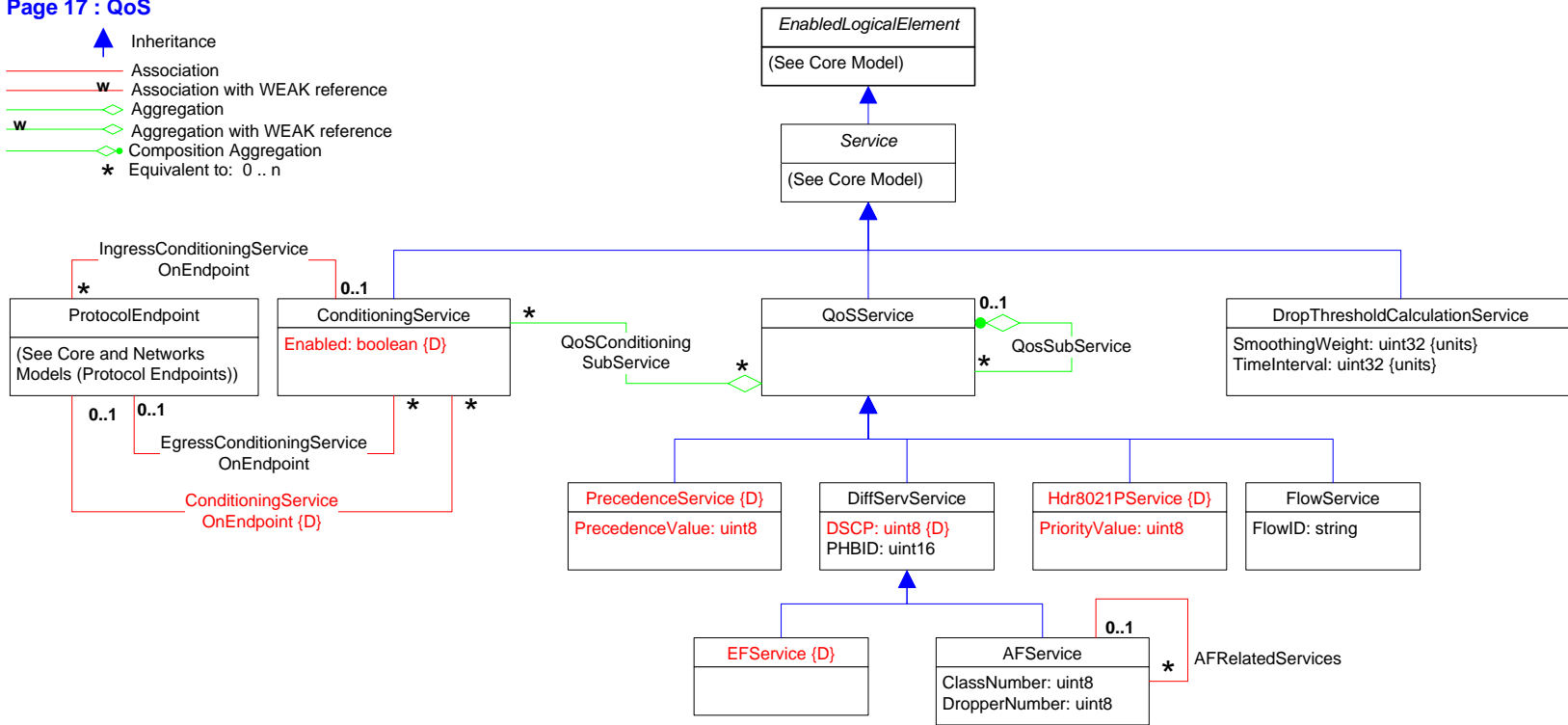
- Inheritance
- Association
- Association with WEAK reference
- Aggregation
- Aggregation with WEAK reference
- Composition Aggregation
- Equivalent to: 0..n

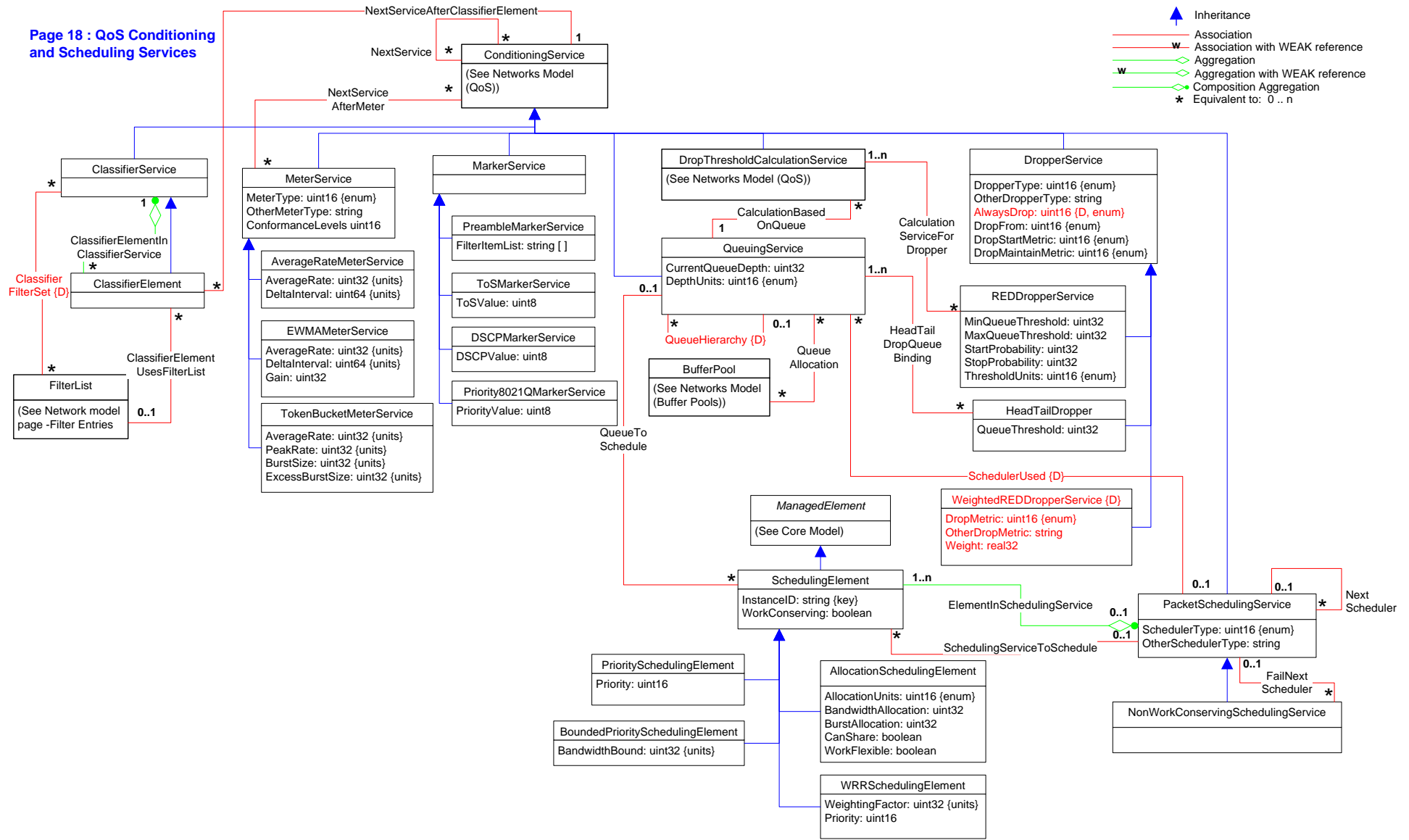


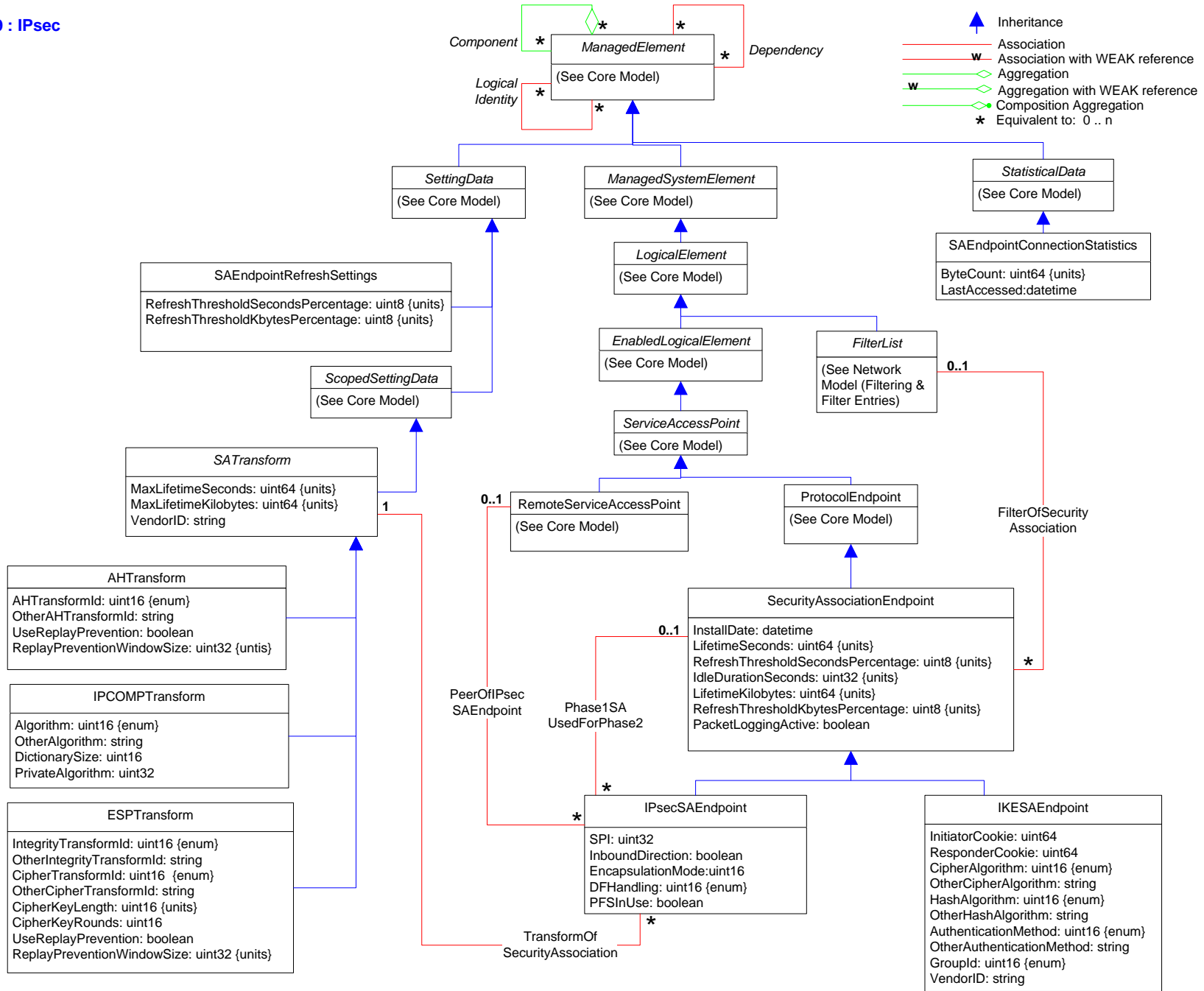


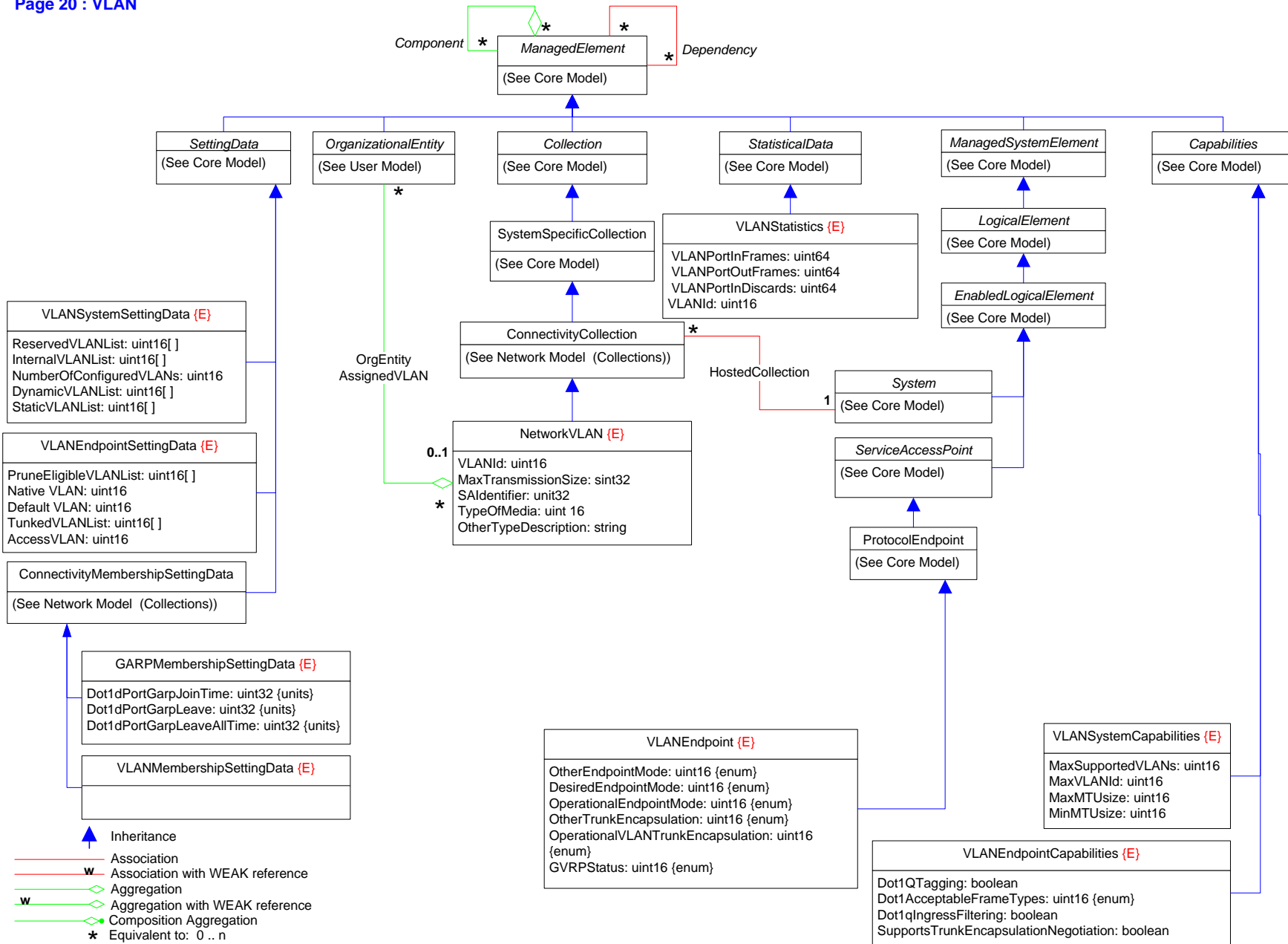
Page 17 : QoS

-  Inheritance
-  Association
-  Association with WEAK reference
-  Aggregation
-  Aggregation with WEAK reference
-  Composition Aggregation
-  * Equivalent to: 0 .. n

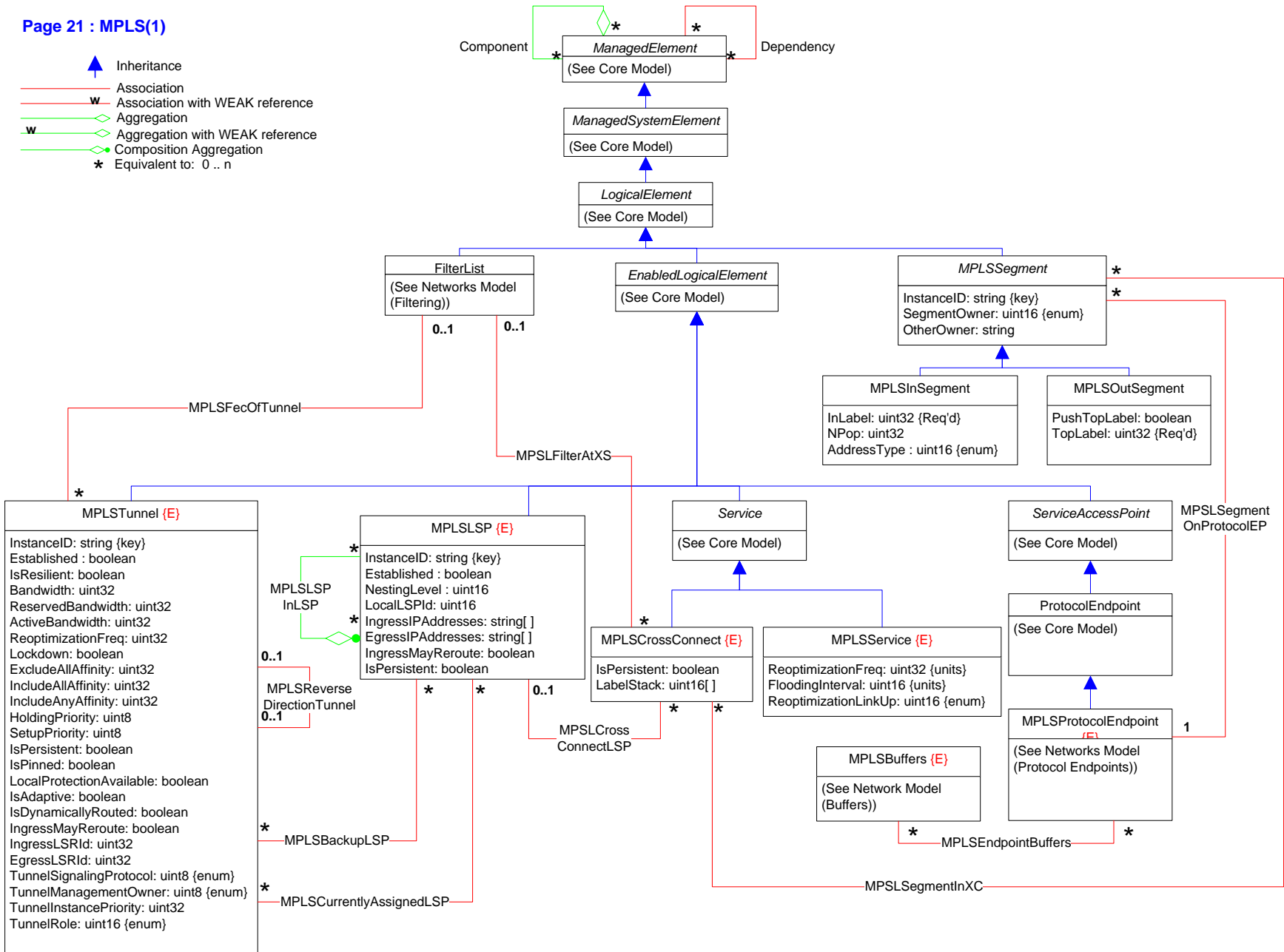













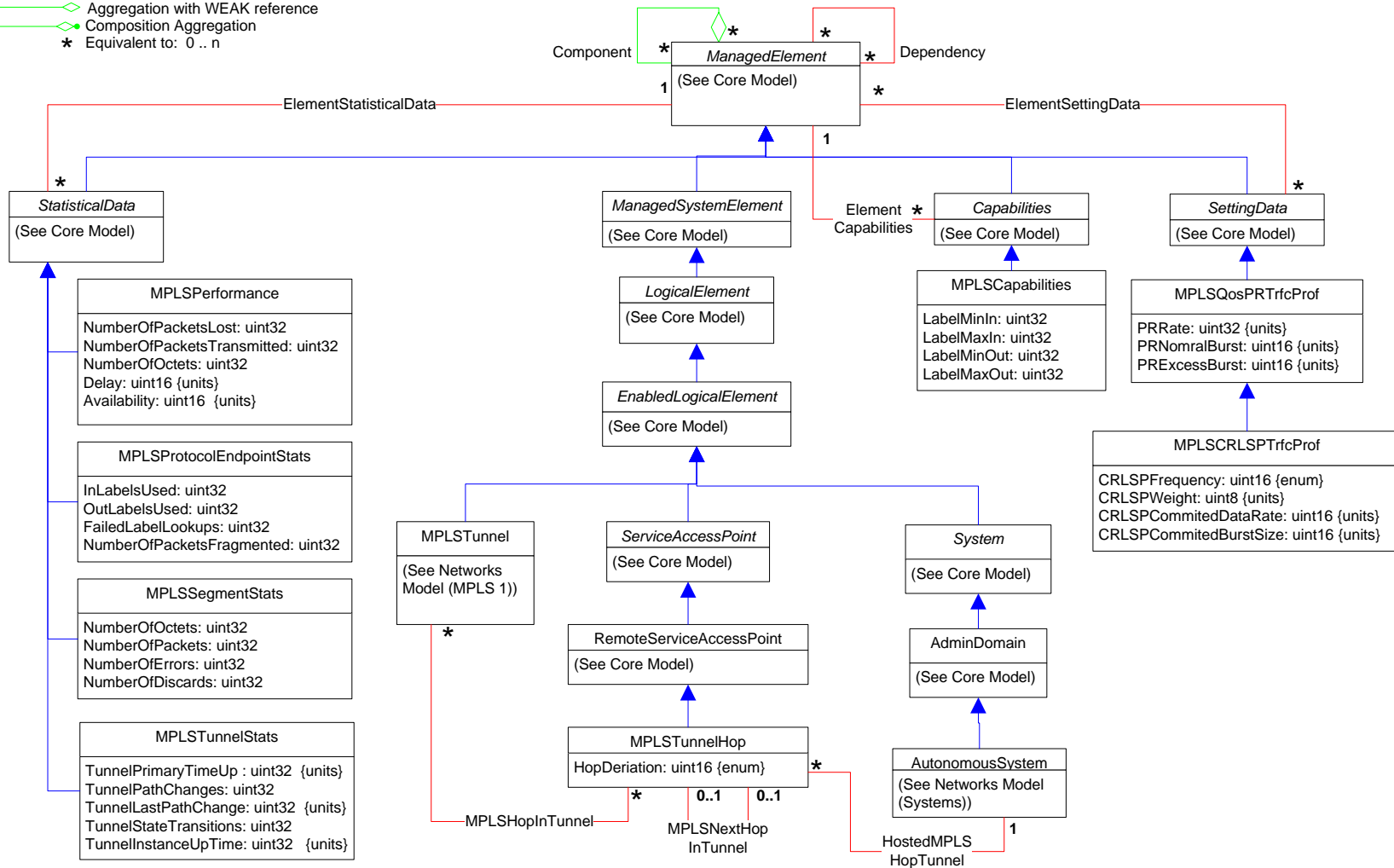


- Inheritance
- Association
- Association with WEAK reference
- Aggregation
- Aggregation with WEAK reference
- Composition Aggregation
- Equivalent to: 0..n










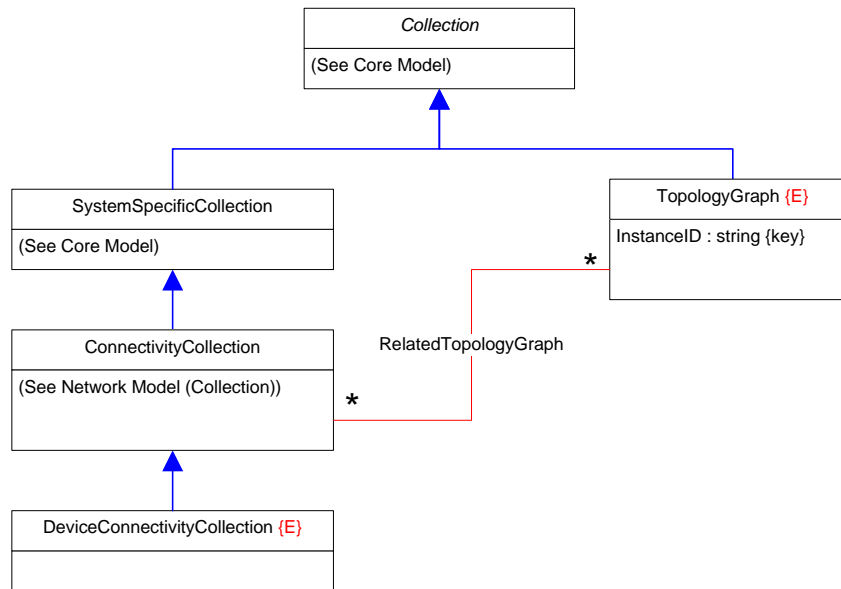
Page 22 : MPLS (2)
Routes, Statistics, Settings, & Capabilities

-  Inheritance
-  Association
-  Association with WEAK reference
-  Aggregation
-  Aggregation with WEAK reference
-  Composition Aggregation
-  Equivalent to: 0..n

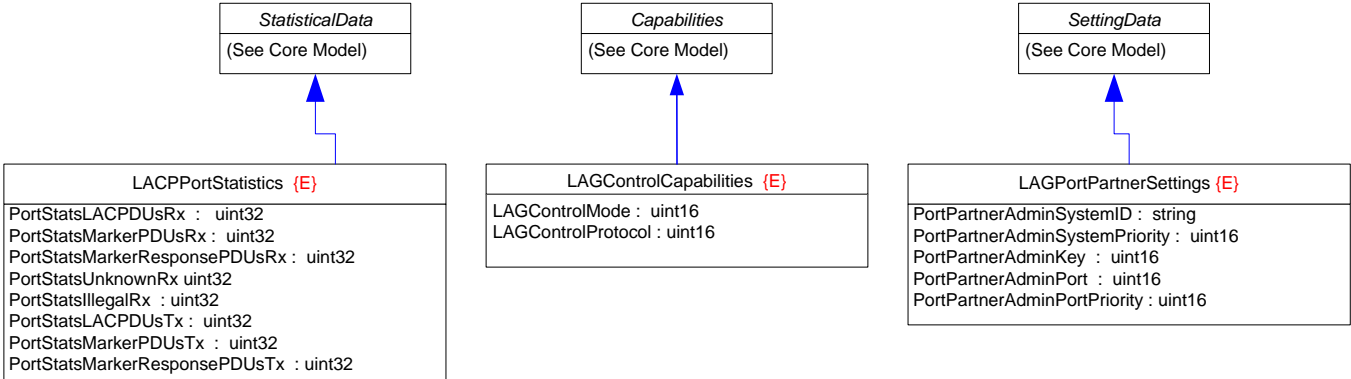
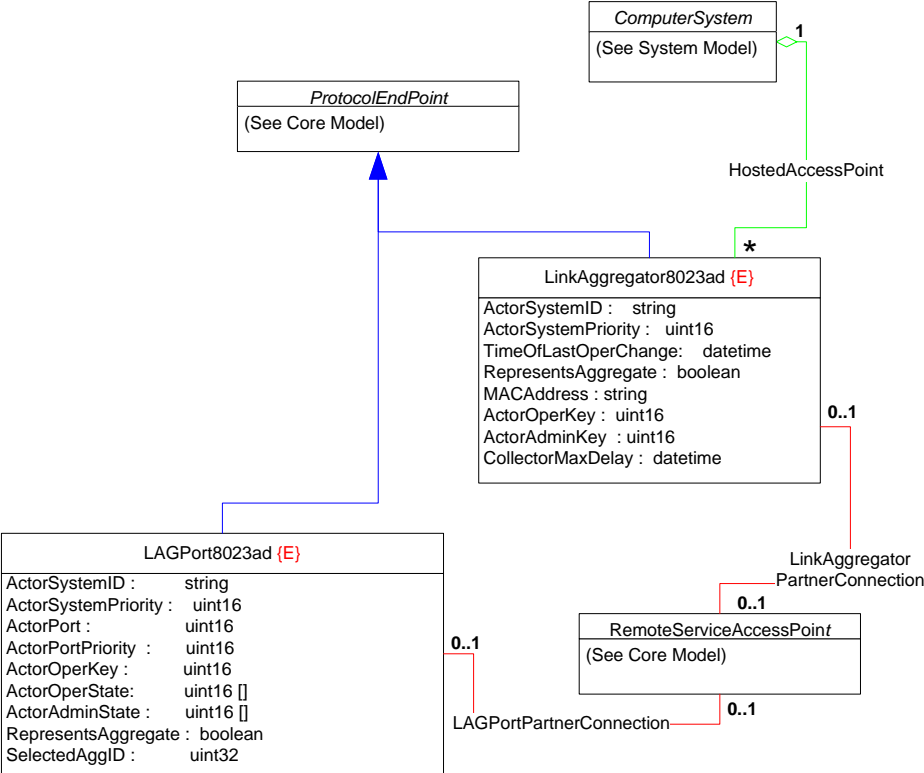
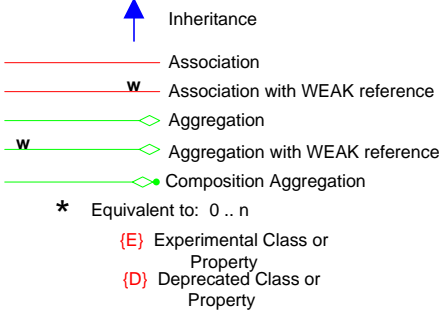


Page 23 : Topology








-  Inheritance
-  Association
-  Association with WEAK reference
-  Aggregation
-  Aggregation with WEAK reference
-  Composition Aggregation
-  Equivalent to: 0 .. n

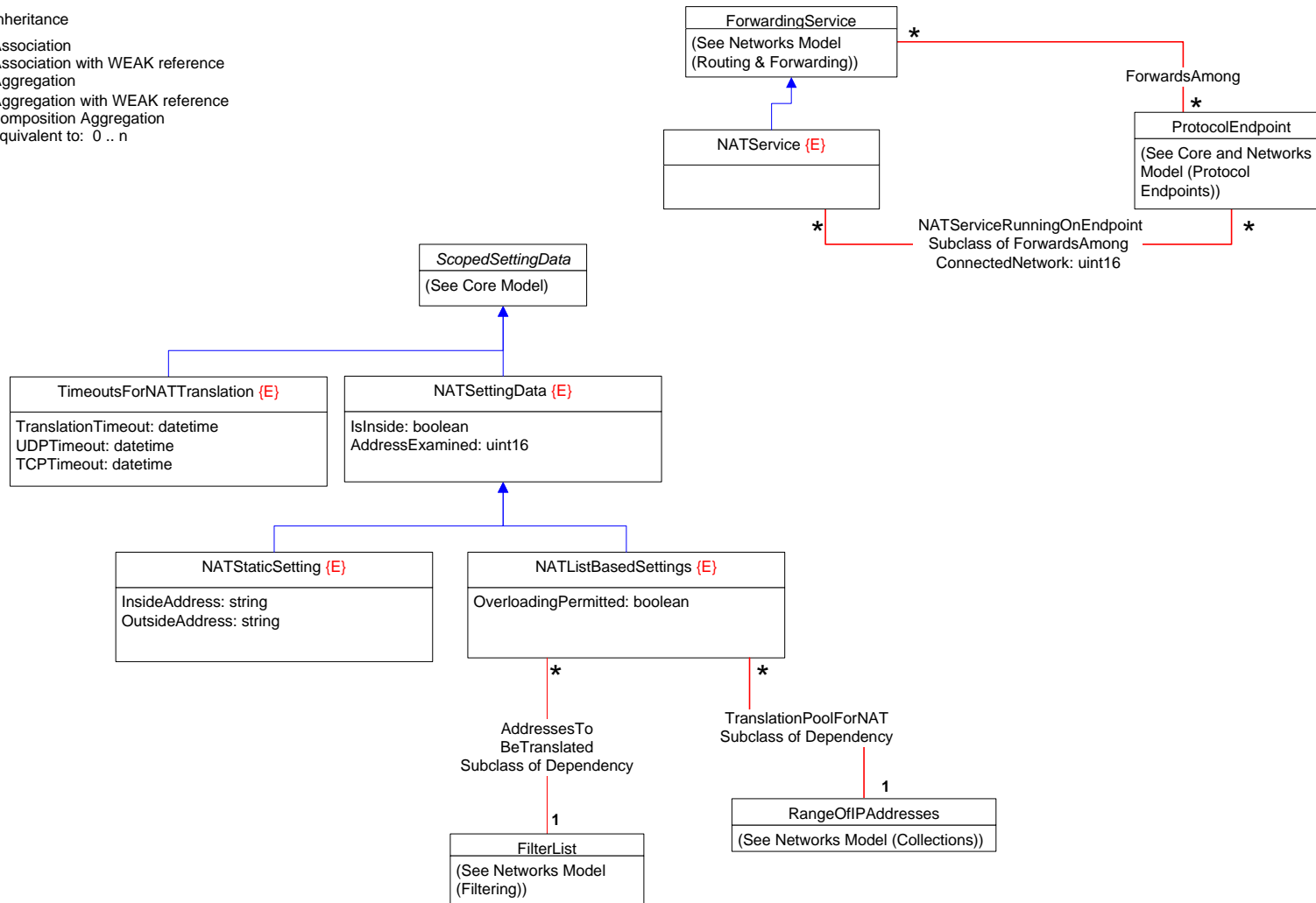


Page 24 : Link Aggregation (802.3ad)










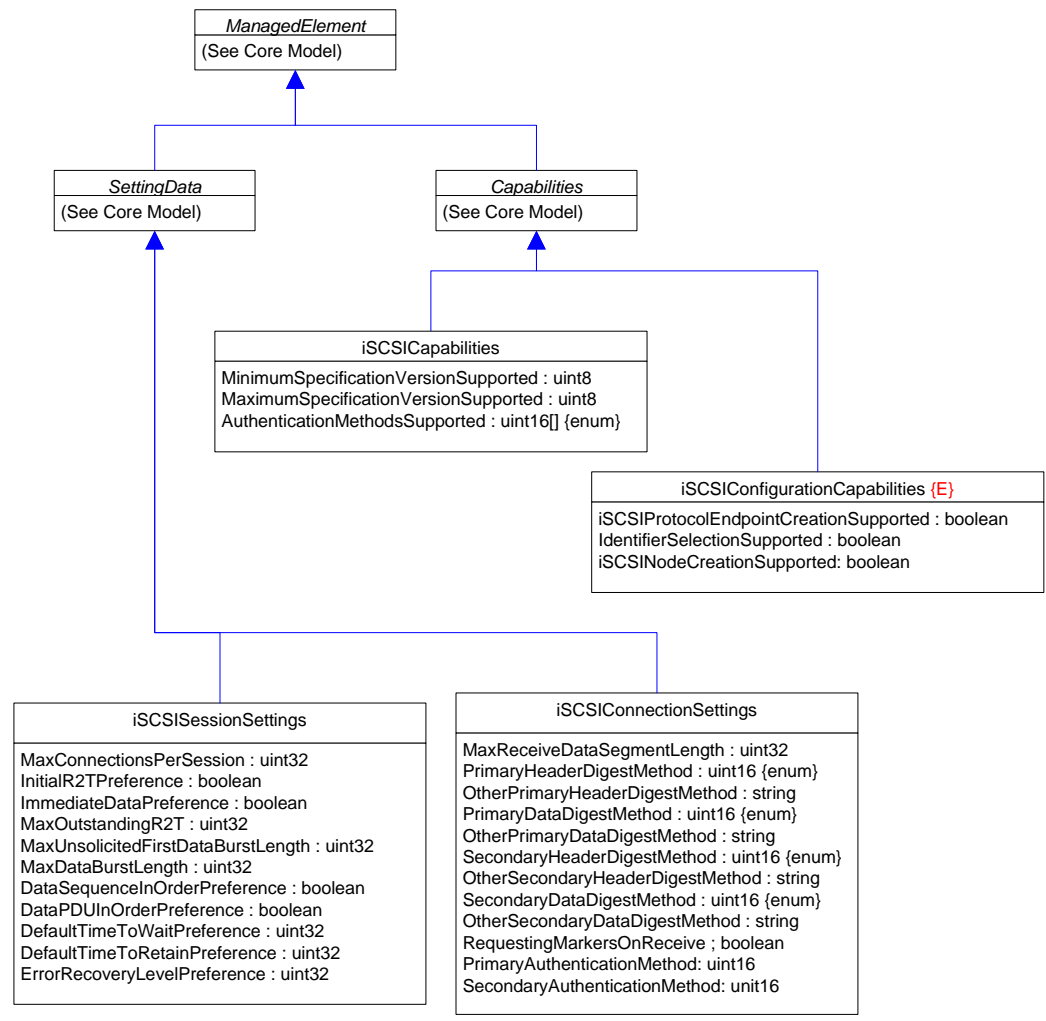
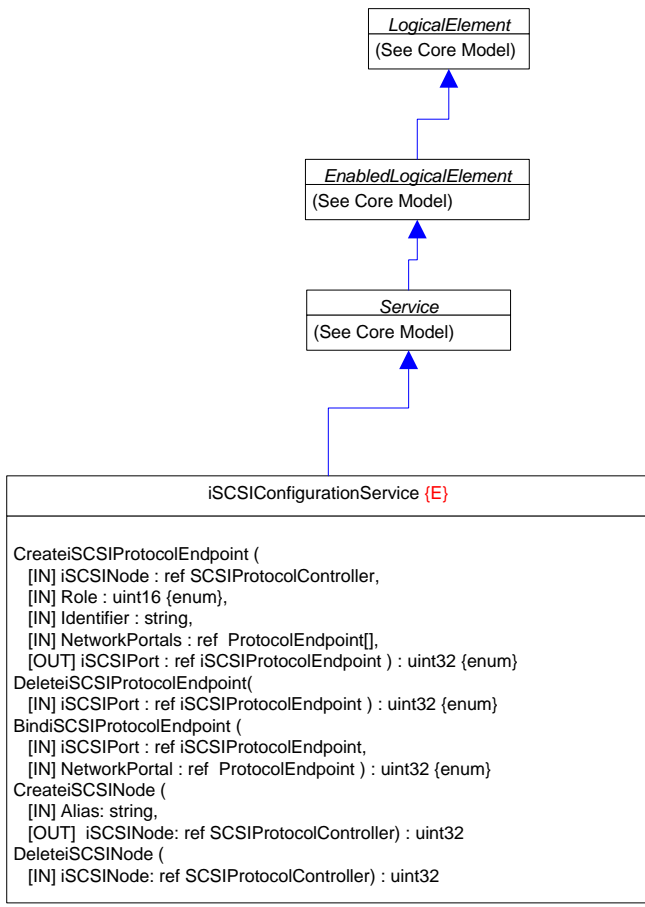
Page 25 : Network Address Translation (NAT)

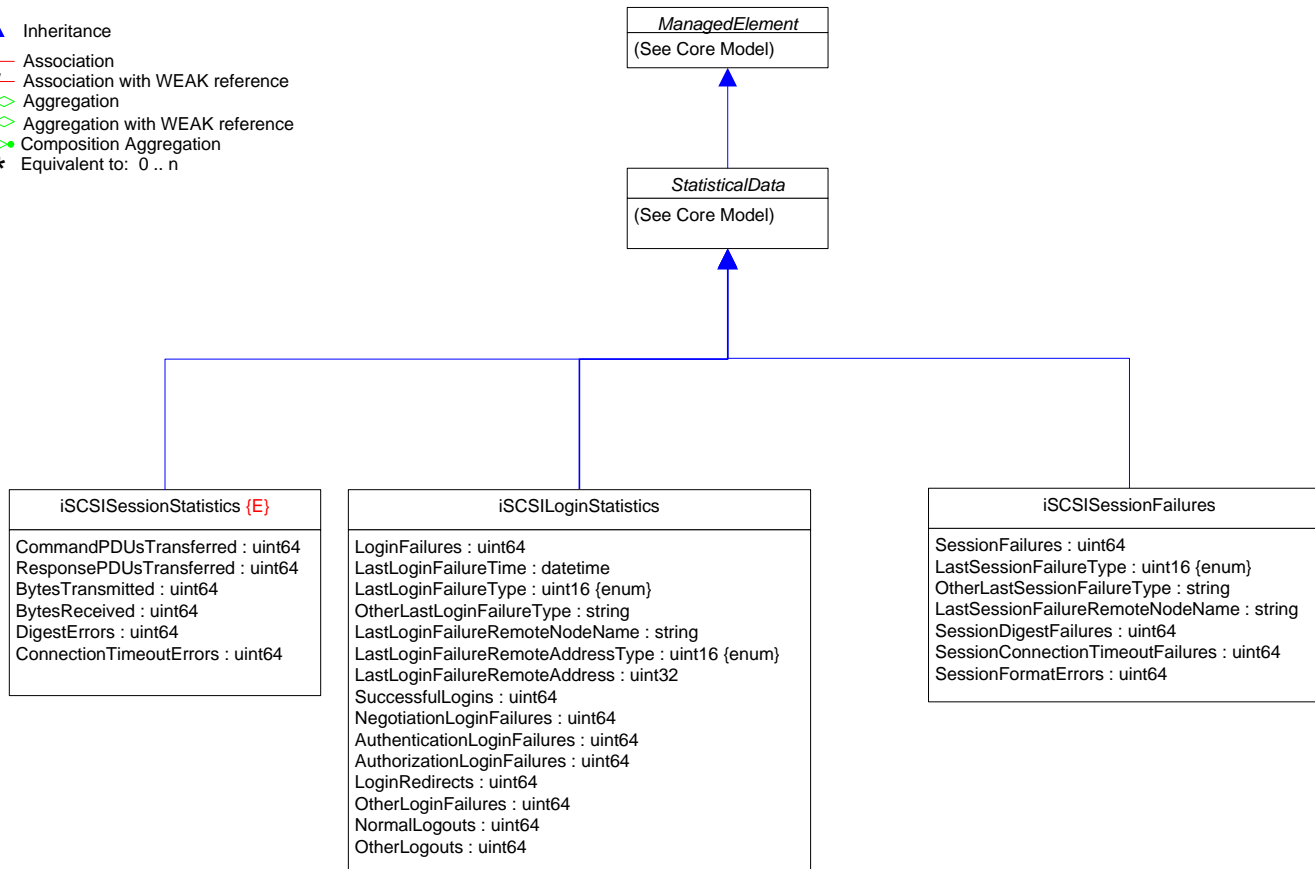
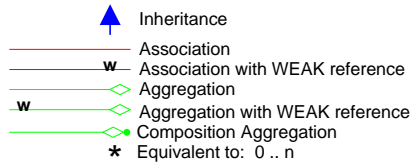
-  Inheritance
-  Association
-  Association with WEAK reference
-  Aggregation
-  Aggregation with WEAK reference
-  Composition Aggregation
-  Equivalent to: 0 .. n










Page 26 : iSCSI (1)

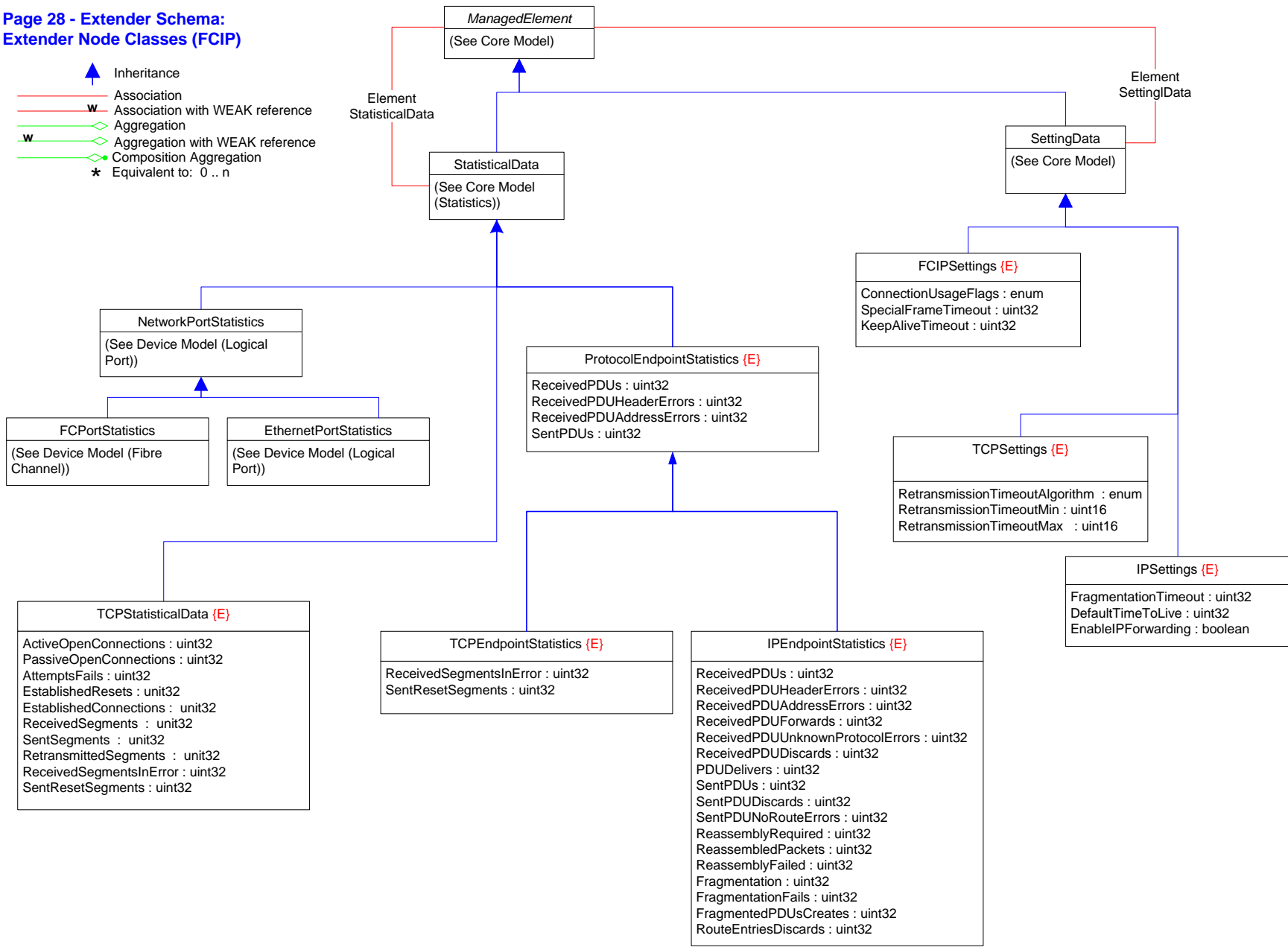
-  Inheritance
-  Association
-  Association with WEAK reference
-  Aggregation
-  Aggregation with WEAK reference
-  Composition Aggregation
-  Equivalent to: 0..n



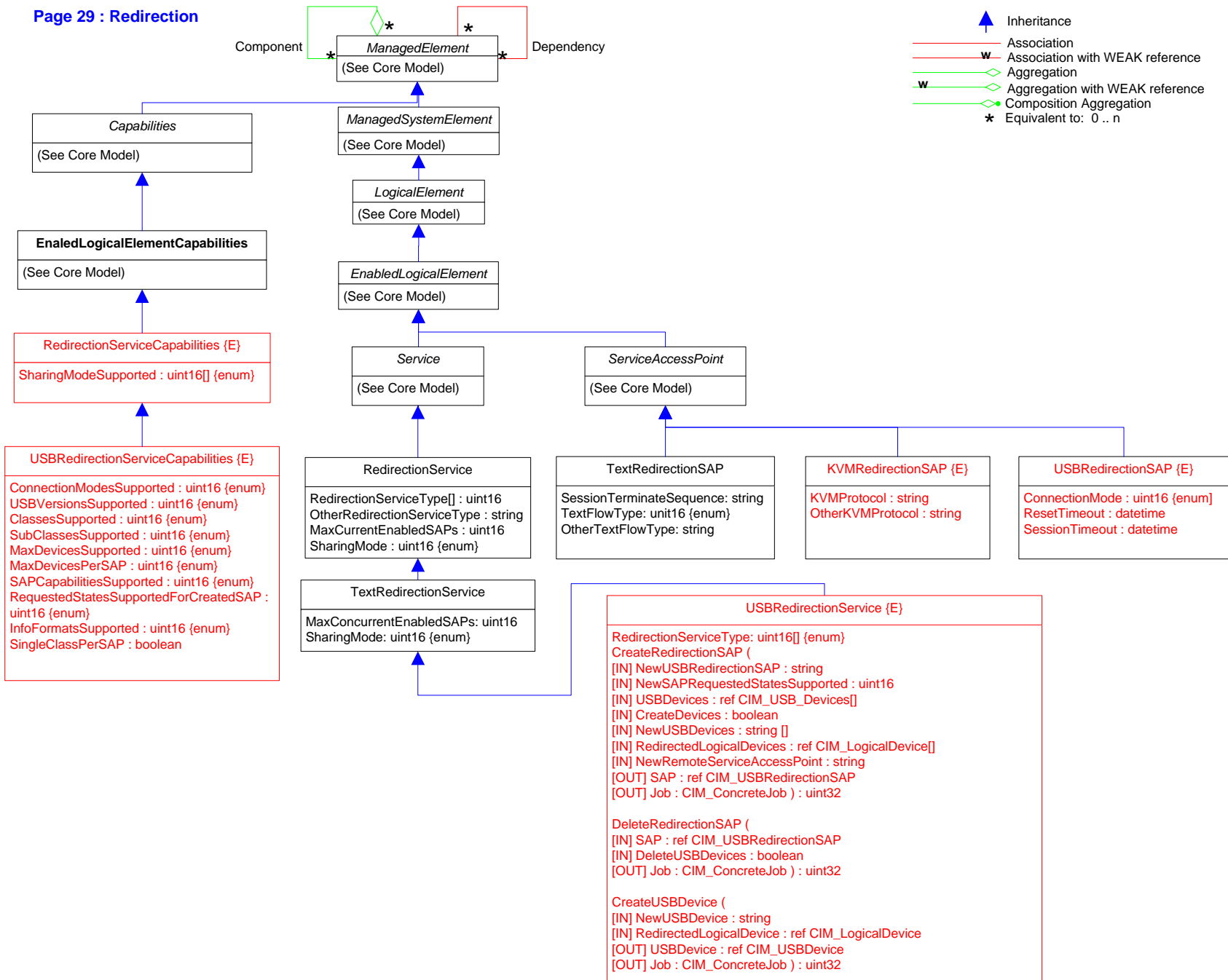


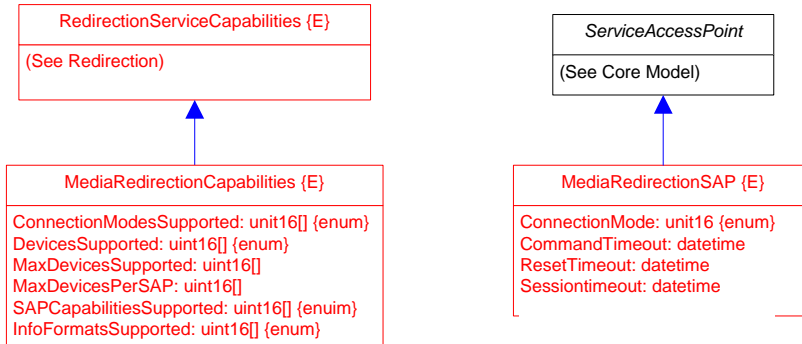
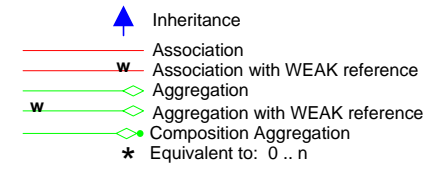
Page 28 - Extender Schema:
Extender Node Classes (FCIP)

-  Inheritance
-  Association
-  Association with WEAK reference
-  Aggregation
-  Aggregation with WEAK reference
-  Composition Aggregation
-  Equivalent to: 0 .. n










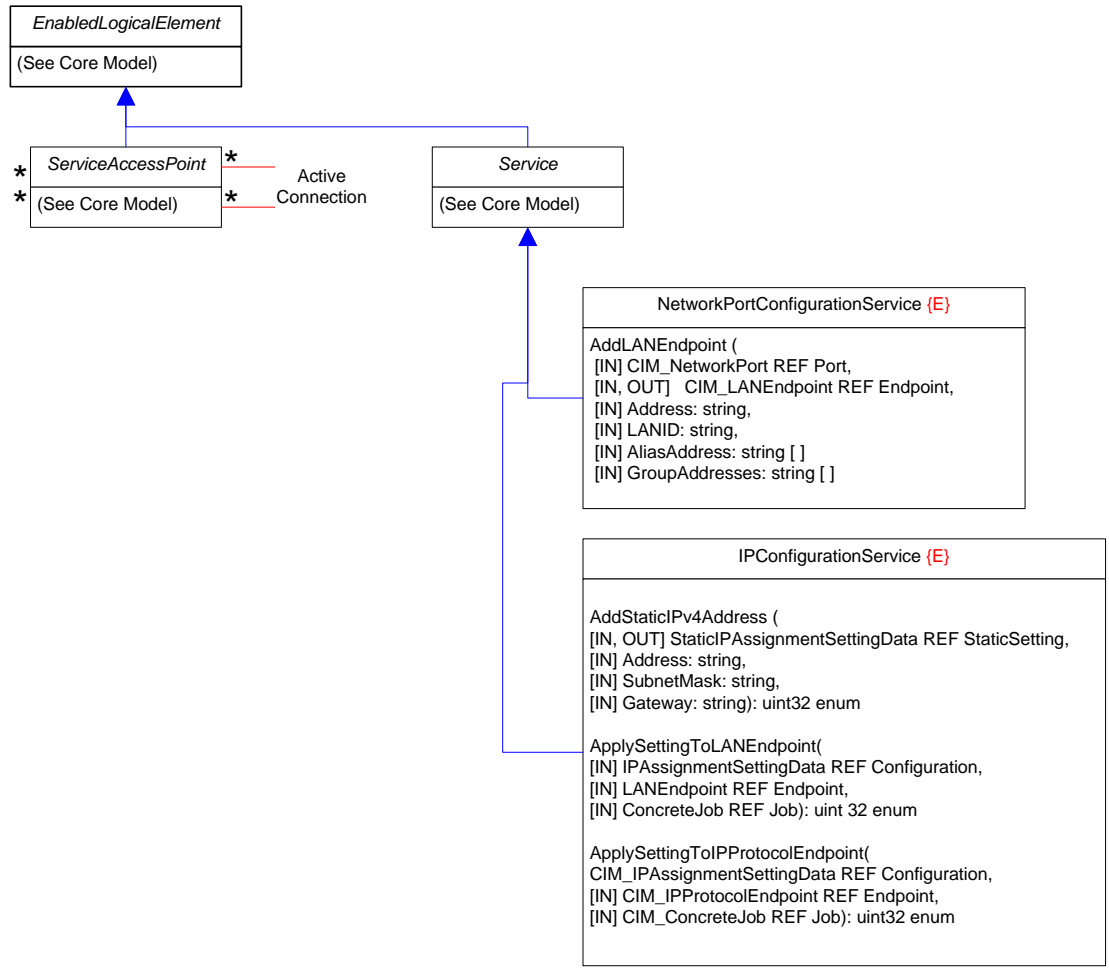
Page 29 : Redirection

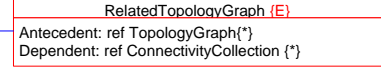
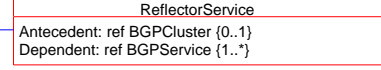
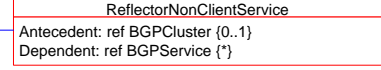
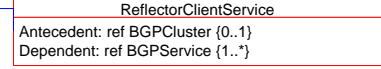
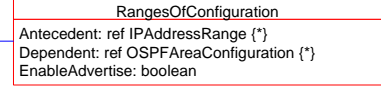
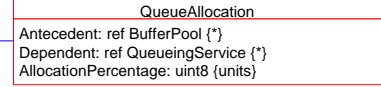
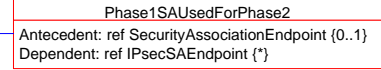
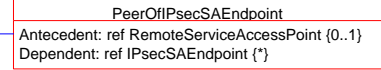
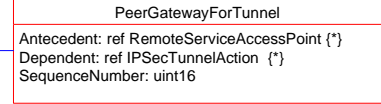
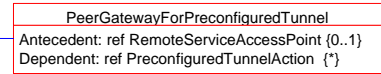
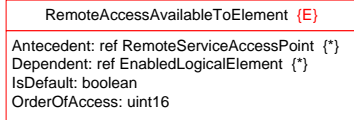
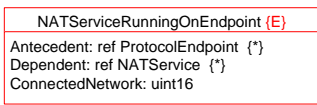
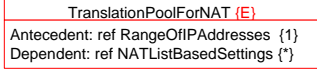
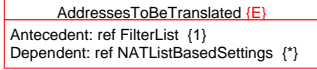
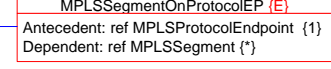
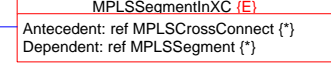
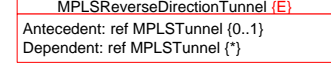
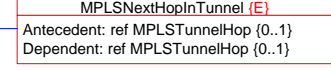
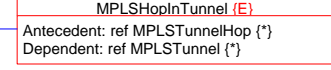
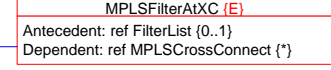
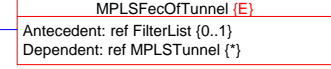
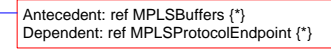
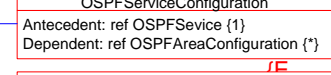
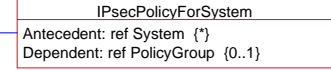
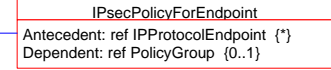
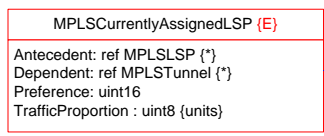
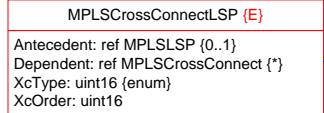
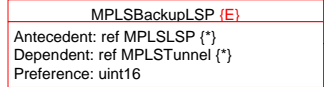
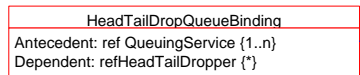
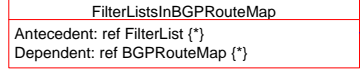
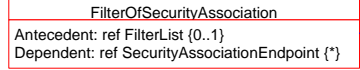
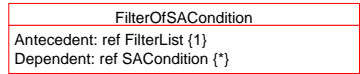
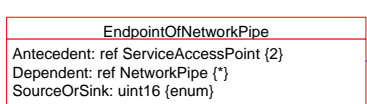
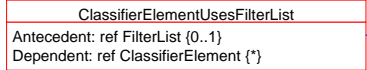
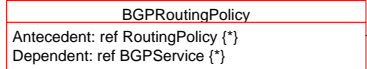
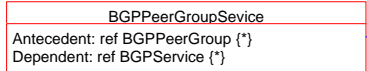
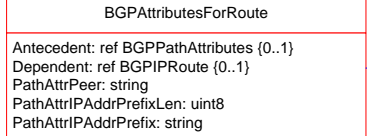
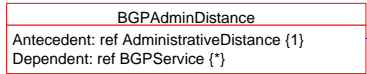
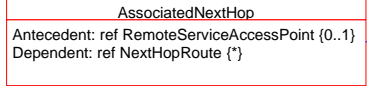
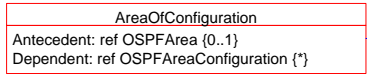
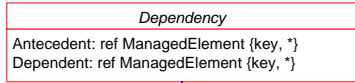


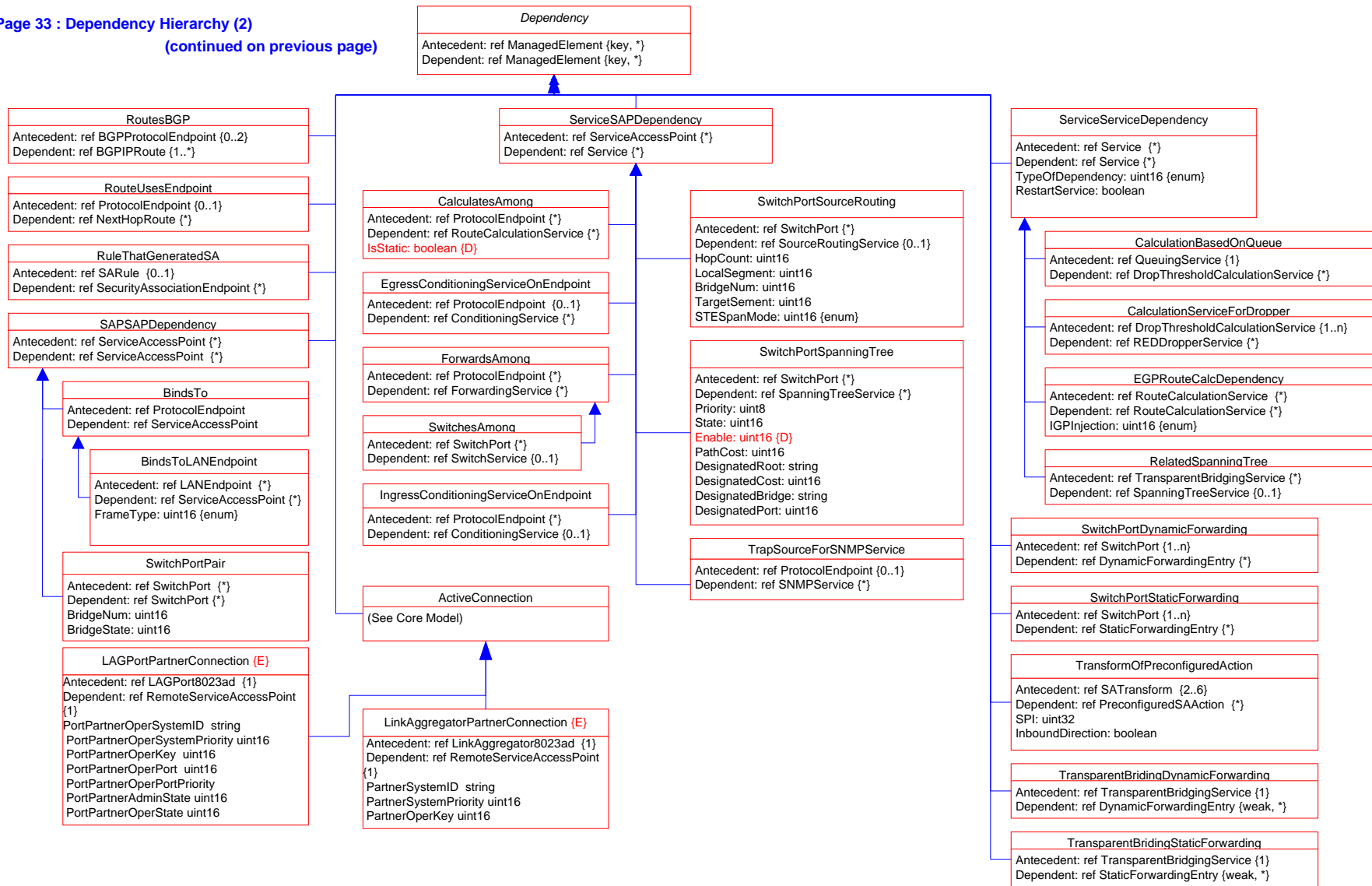


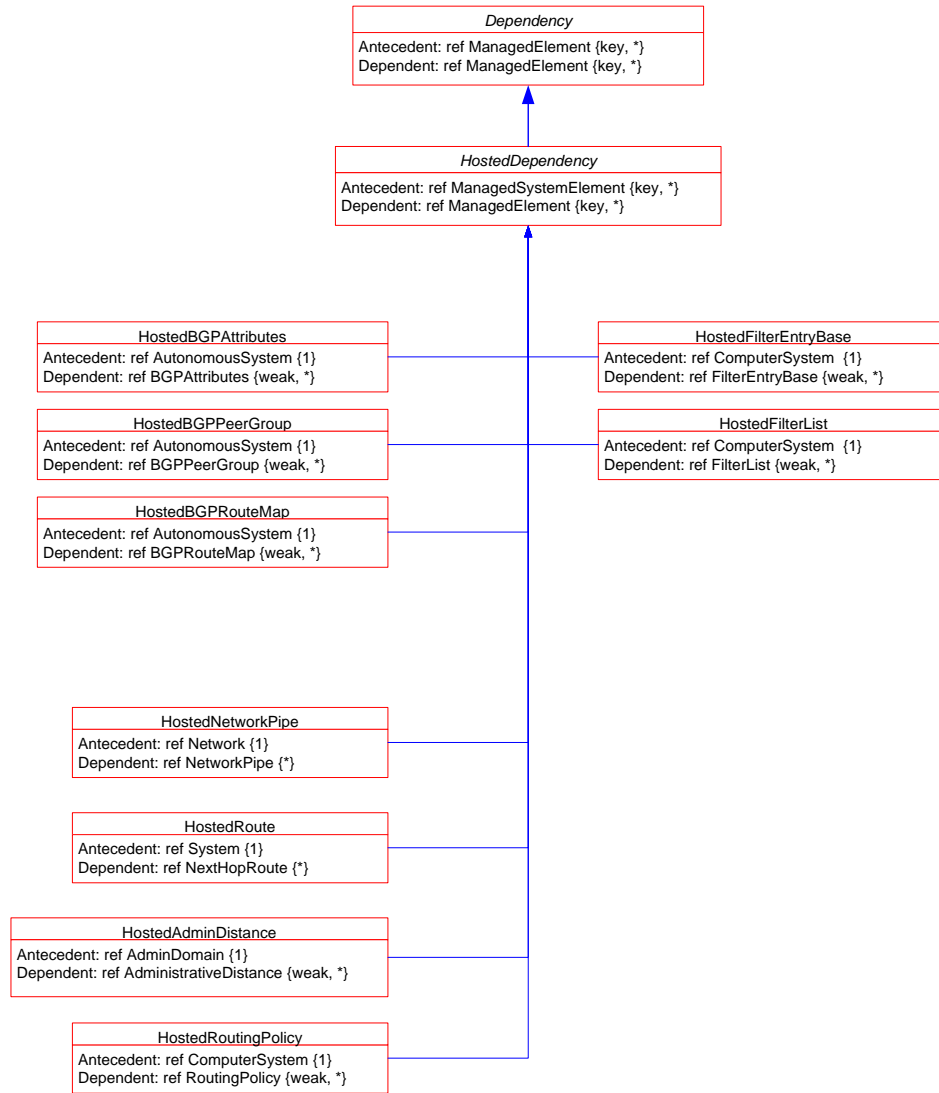
Page 31 : ConfigurationServices

-  Inheritance
-  Association
-  Association with WEAK reference
-  Aggregation
-  Aggregation with WEAK reference
-  Composition Aggregation
-  Equivalent to: 0 .. n

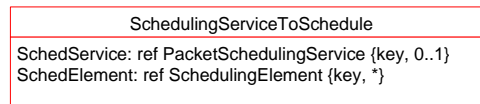
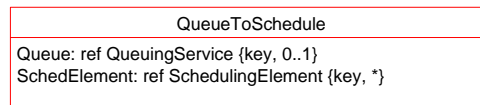
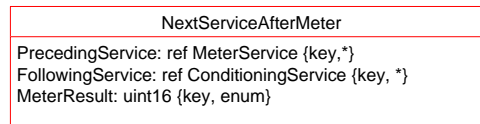
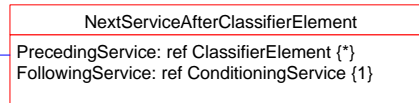
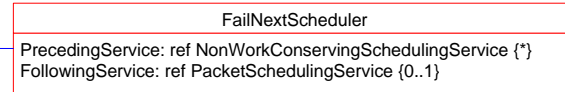
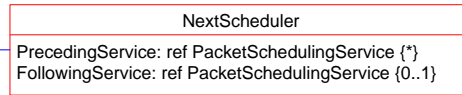
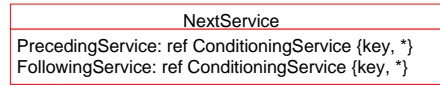
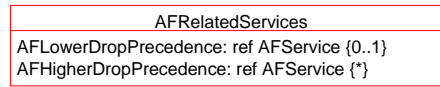
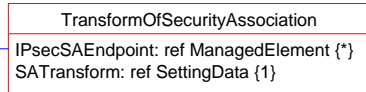
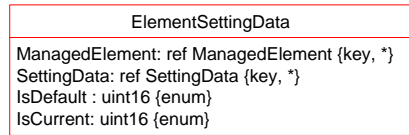
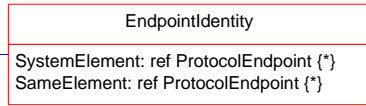
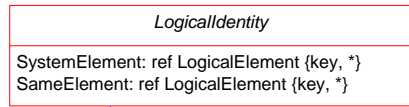


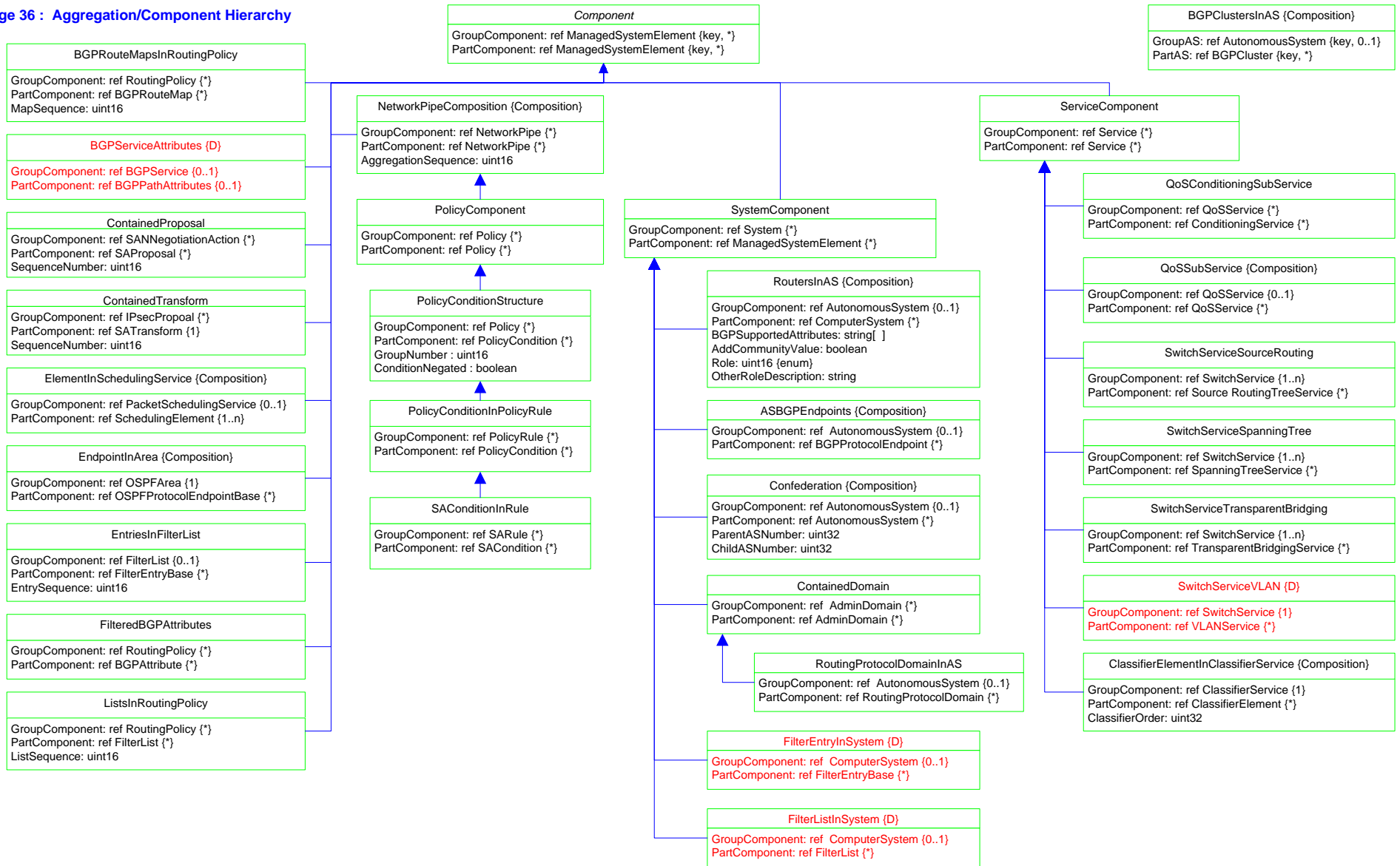




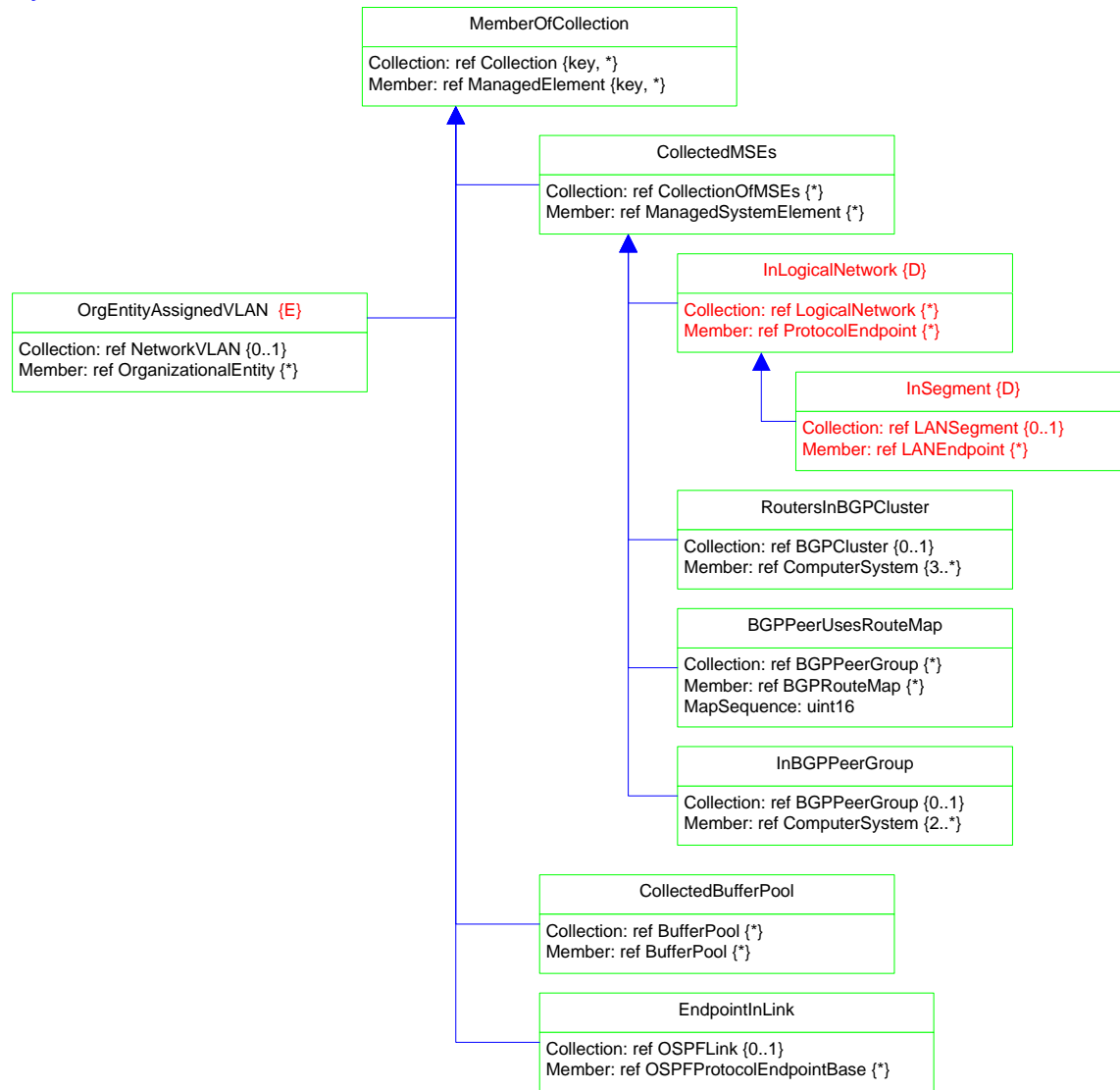


Page 35 : Association (Non-Aggregation/Dependency) Hierarchy





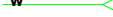




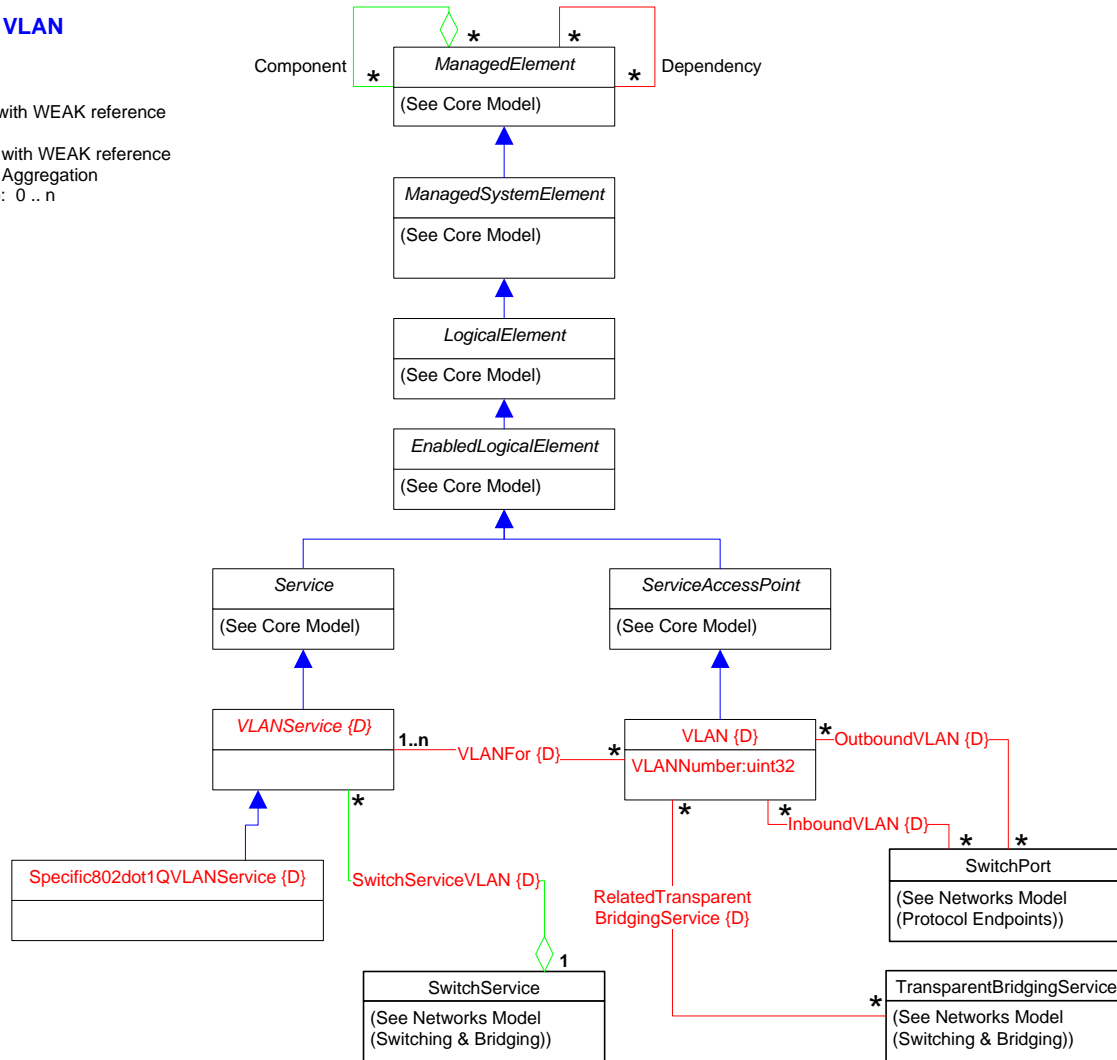


Page 37 : MemberOfCollection Hierarchy



Page 38 : Deprecated VLAN

-  Inheritance
-  Association
-  Association with WEAK reference
-  Aggregation
-  Aggregation with WEAK reference
-  Composition Aggregation
-  Equivalent to: 0 .. n



Page 39: Deprecated Associations

