








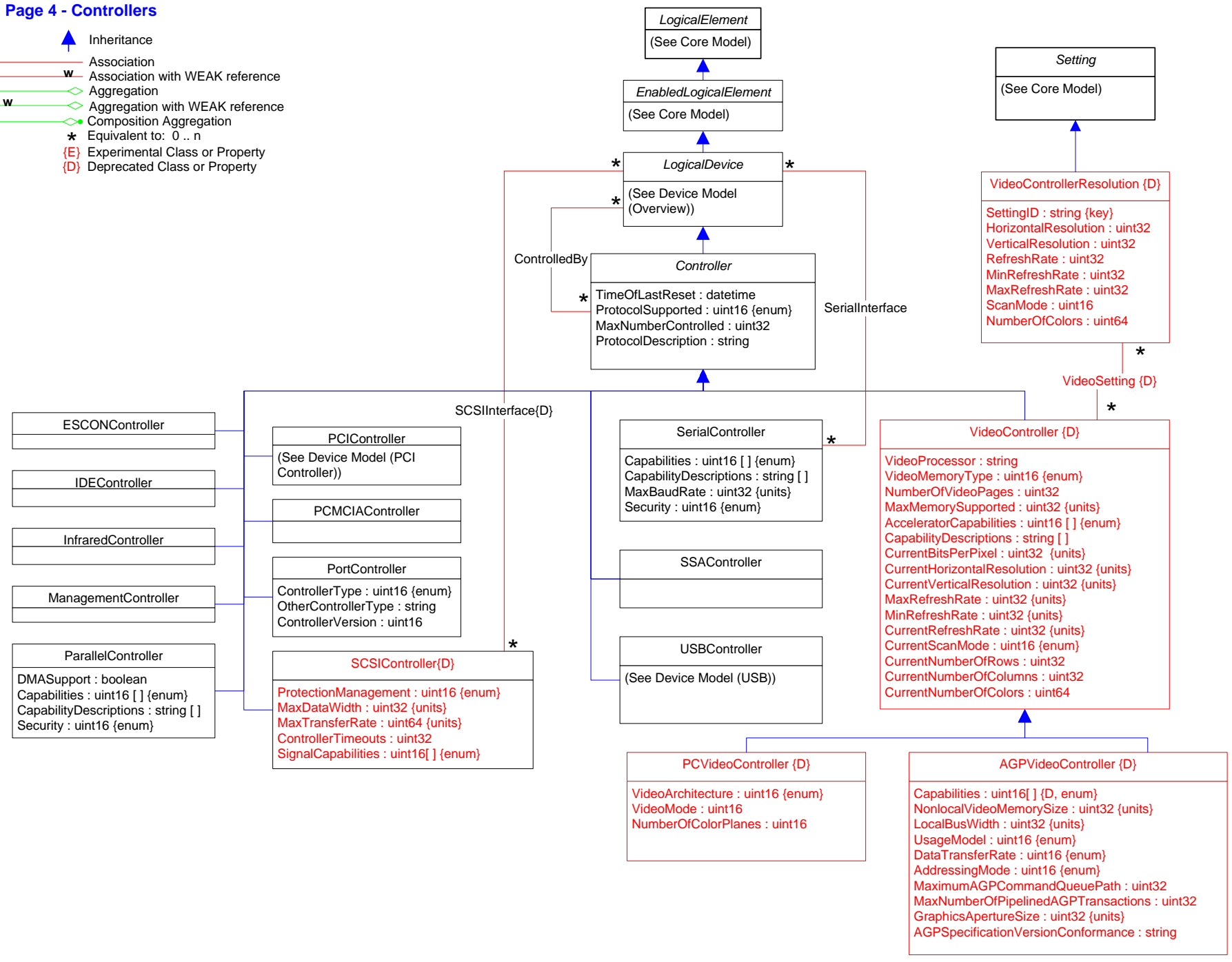


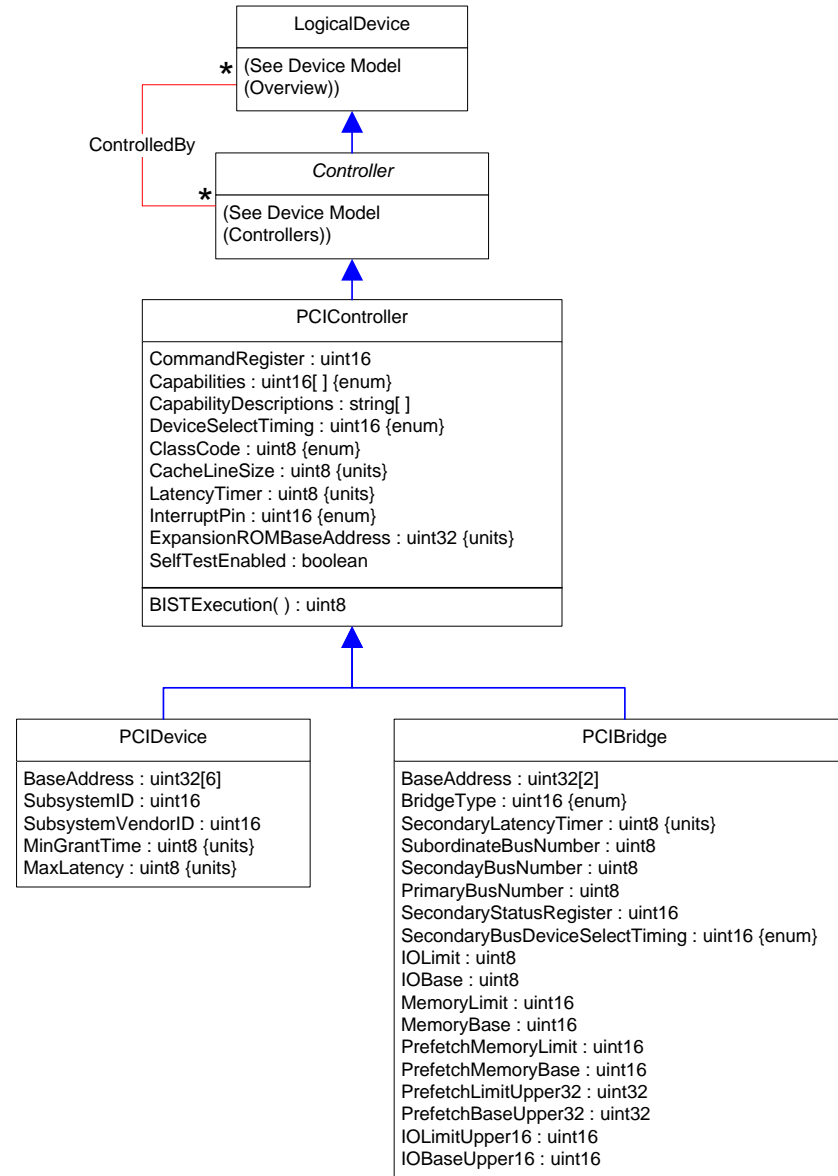
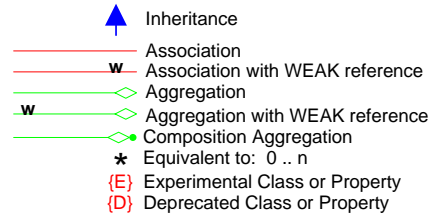
Page 4 - Controllers

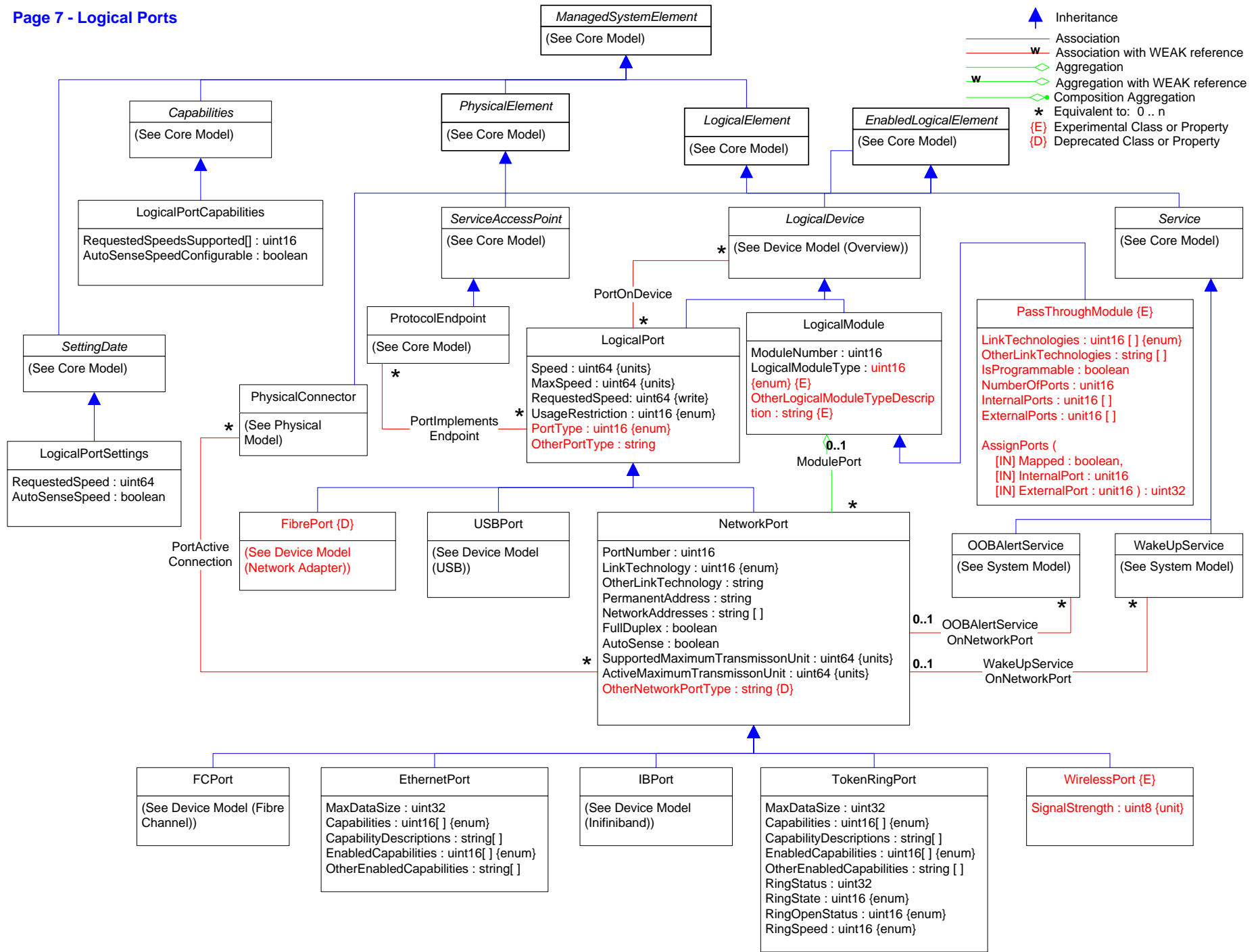
-  Inheritance
-  Association
-  Association with WEAK reference
-  Aggregation
-  Aggregation with WEAK reference
-  Composition Aggregation
-  Equivalent to: 0 .. n
-  {E} Experimental Class or Property
-  {D} Deprecated Class or Property














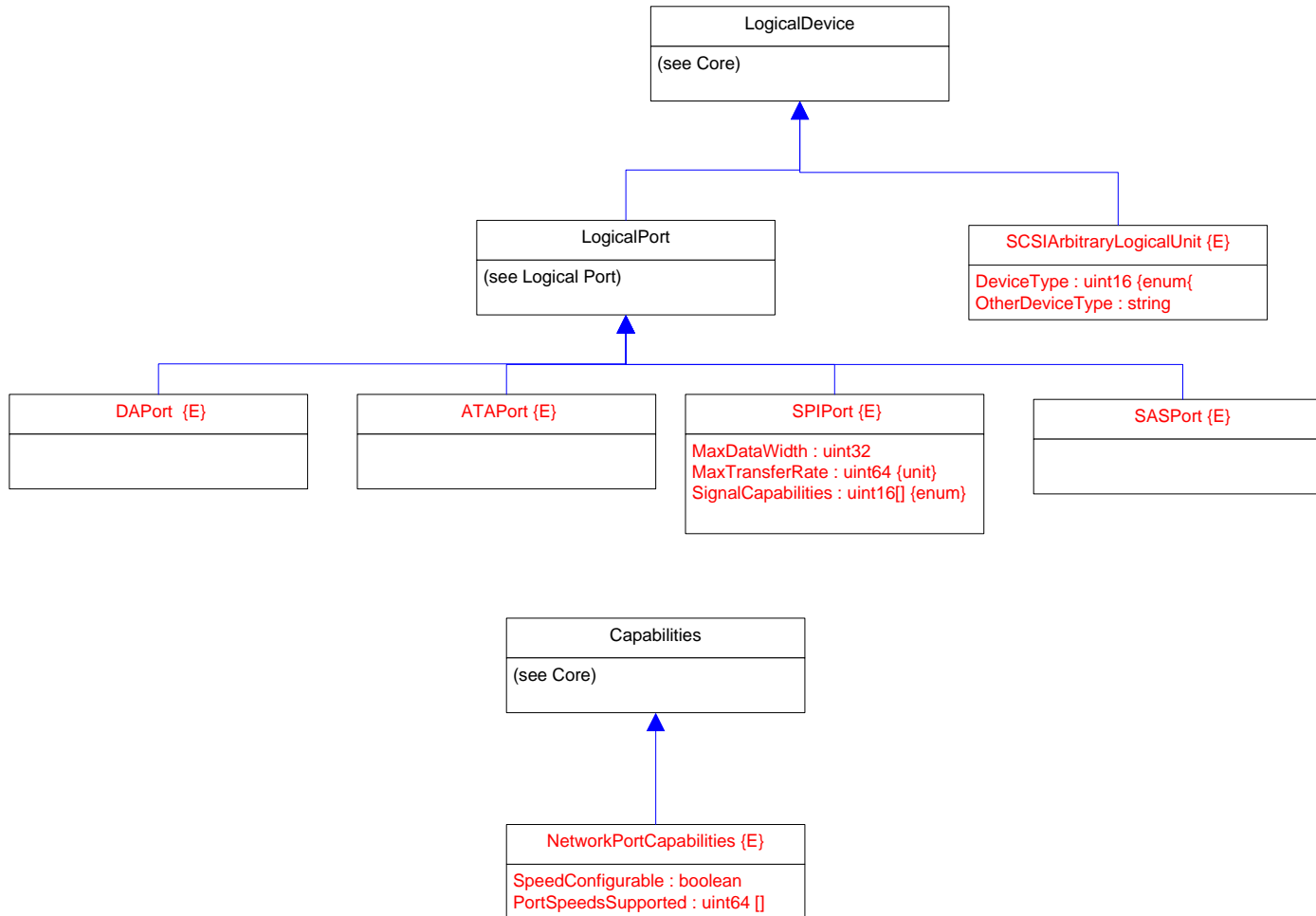
## Page 6 - PCI Controllers





## Page 8 – Ports 2

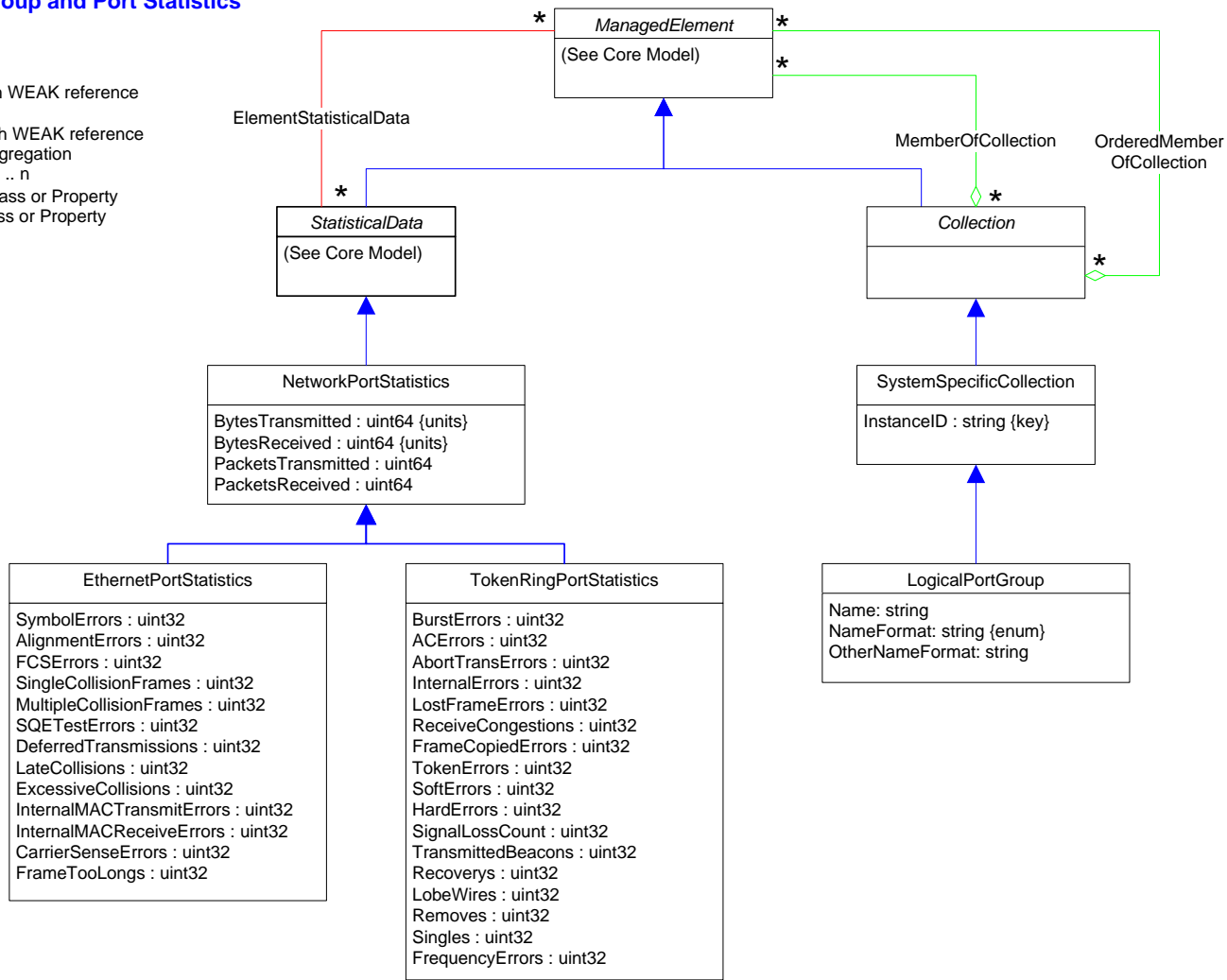
-  Inheritance
-  Association
-  Association with WEAK reference
-  Aggregation
-  Aggregation with WEAK reference
-  Composition Aggregation
-  Equivalent to: 0 .. n
-  Experimental Class or Property
-  Deprecated Class or Property





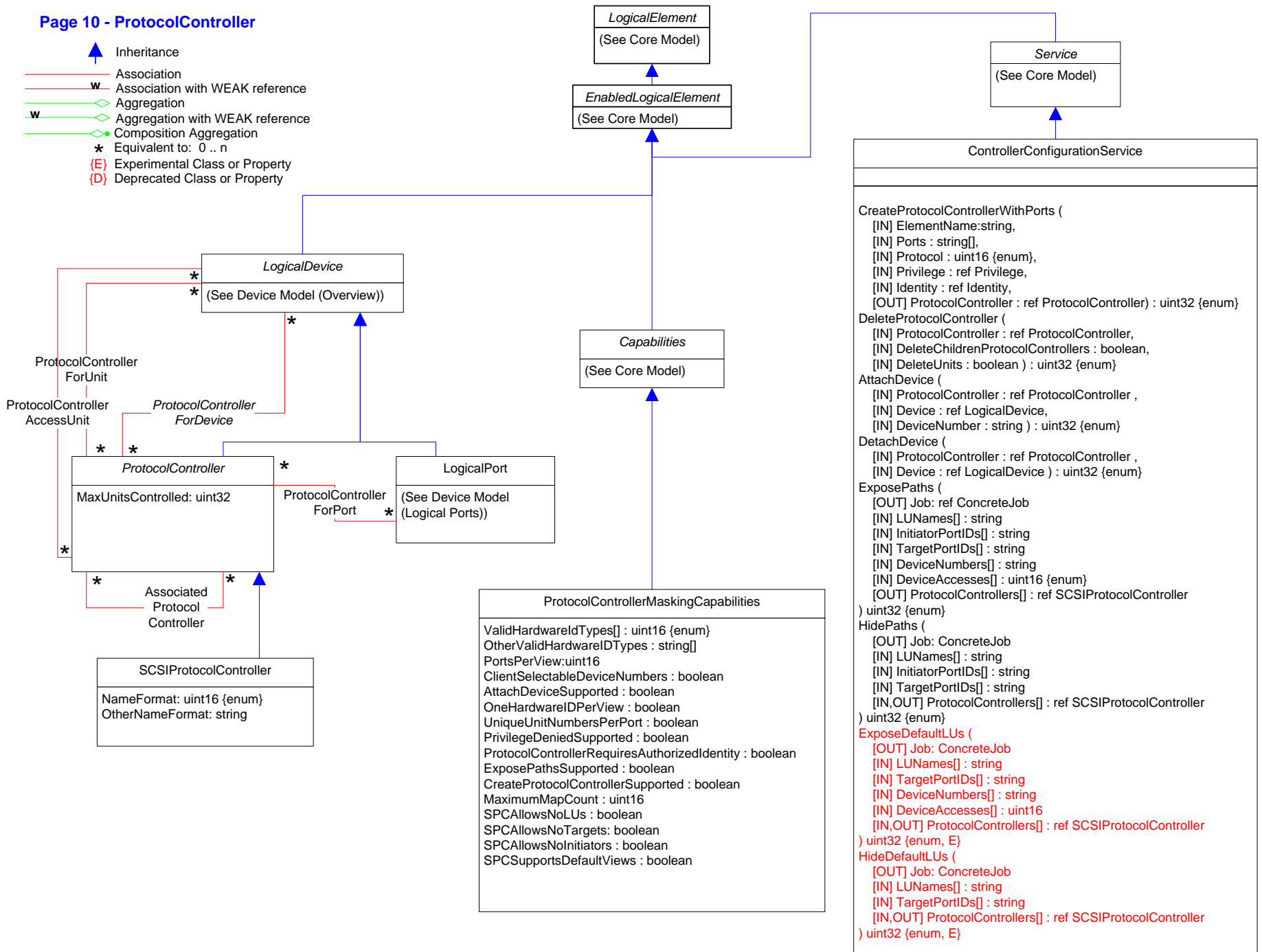
Page 9 - Logical Port Group and Port Statistics










- Inheritance
- Association
- Association with WEAK reference
- Aggregation
- Aggregation with WEAK reference
- Composition Aggregation
- Equivalent to: 0 .. n
- Experimental Class or Property
- Deprecated Class or Property



Page 10 - ProtocolController

- Inheritance
- Association
- Association with WEAK reference
- Aggregation
- Aggregation with WEAK reference
- Composition Aggregation
- Equivalent to: 0 .. n
- (E) Experimental Class or Property
- (D) Deprecated Class or Property



-  Inheritance
-  Association
-  Association with WEAK reference
-  Aggregation
-  Aggregation with WEAK reference
-  Composition Aggregation
-  Equivalent to: 0..n
-  (E) Experimental Class or Property
-  (D) Deprecated Class or Property

**FCAdapterEventCounters (D)**

ABTSFramesReceived : uint64  
 ABTSFramesSent : uint64  
 FBSYsReceived : uint64  
 PBSYsReceived : uint64  
 PBSYsSent : uint64  
 FRJTsReceived : uint64  
 PRJTsReceived : uint64  
 PRJTsSent : uint64  
 PRLIsRejected : uint64  
 PRLIsRejected : uint64  
 PRLIsRejected : uint64  
 ABTSFramesRejected : uint64

ResetCounter ([IN] SelectedCounter : uint16) : uint32

**FibrePortEventCounters (D)**

PLOGIsReceived : uint64  
 PLOGIsSent : uint64  
 EOFAbortsReceived : uint64  
 EOFAbortsTransmitted : uint64  
 PLOGOsReceived : uint64  
 PLOGOsSent : uint64  
 PLOGOsRejected : uint64  
 PLOGOsRejected : uint64

ResetCounter ([IN] SelectedCounter : uint16) : uint32

**DeviceStatistical Information**  
 (See Core Model)

**LogicalPort**  
 (See Device Model (Logical Port))

**PhysicalConnector**  
 (See Physical Model)

**EnabledLogicalElement**  
 (See Core Model)

**LogicalDevice**  
 (See Device Model (Overview))

**Service**  
 (See Core Model)

**OOBAlertService**  
 (See System Model)

**WakeUpService**  
 (See System Model)

**FibrePort (D)**

AddressIdentifier : uint32  
 SupportedPortTypes : uint16[]  
 PortTypeVersions : string[]  
 EnabledPortTypes : uint16[]  
 EnabledVersions : string[]  
 CurrentPortType : uint16  
 CurrentVersion : string  
 AliasAddresses : uint32[]  
 LossOfSignalCounter : uint64  
 LossOfSyncCounter : uint64  
 CRCErrors : uint64  
 InvalidTransmissionWords : uint64  
 FramesTooShort : uint64  
 FramesTooLong : uint64  
 ElasticityBufferUnderruns : uint64  
 ElasticityBufferOverruns : uint64  
 ReceiverTransmitterTimeout : uint64  
 BypassedState : uint16  
 ConnectedMedia : uint16

**FibreChannelAdapter (D)**

MaxFrameSize : uint64  
 SupportedCOS : uint16[]  
 FC4TypesSupported : uint16[]  
 FC4VendorUniqueTypes : uint16[]  
 CurrentFC4Types : uint16[]  
 CurrentFC4VendorTypes : uint16[]  
 Capabilities : uint16[]  
 CapabilityDescriptions : string[]  
 ReceiveBufferErrors : uint64  
 ReceiveEndErrors : uint64  
 ResourceAllocationTimeout : uint64  
 ErrorDetectTimeout : uint64  
 Class1SequencesSent : uint64  
 Class2SequencesSent : uint64  
 Class3SequencesSent : uint64  
 Class4SequencesSent : uint64  
 Class2OctetsReceived : uint64  
 Class2OctetsTransmitted : uint64  
 Class2FramesReceived : uint64  
 Class2FramesTransmitted : uint64  
 Class2DiscardFrames : uint64  
 Class3OctetsReceived : uint64  
 Class3OctetsTransmitted : uint64  
 Class3FramesReceived : uint64  
 Class3FramesTransmitted : uint64  
 Class3DiscardFrames : uint64  
 ParityErrors : uint64  
 FrameTimeouts : uint64  
 BufferCreditErrors : uint64  
 EndCreditErrors : uint64  
 OutOfOrderFramesReceived : uint64

**NetworkAdapter (D)**

PermanentAddress : string  
 NetworkAddresses : string[]  
 Speed : uint64  
 MaxSpeed : uint64  
 FullDuplex : boolean  
 AutoSense : boolean  
 OctetsTransmitted : uint64  
 OctetsReceived : uint64

**EthernetAdapter (D)**

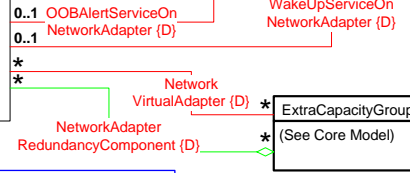
MaxDataSize : uint32  
 Capabilities : uint16[] (enum)  
 CapabilityDescriptions : string[]  
 EnabledCapabilities : uint16[] (enum)  
 SymbolErrors : uint32  
 TotalPacketsTransmitted : uint64  
 TotalPacketsReceived : uint64  
 AlignmentErrors : uint32  
 FCSErrors : uint32  
 SingleCollisionFrames : uint32  
 MultipleCollisionFrames : uint32  
 SQETestErrors : uint32  
 DeferredTransmissions : uint32  
 LateCollisions : uint32  
 ExcessiveCollisions : uint32  
 InternalMACTransmitErrors : uint32  
 InternalMACReceiveErrors : uint32  
 CarrierSenseErrors : uint32  
 FrameTooLongs : uint32

**TokenRingAdapter (D)**

MaxDataSize : uint32  
 Capabilities : uint16[] (enum)  
 CapabilityDescriptions : string[]  
 EnabledCapabilities : uint16[] (enum)  
 RingStatus : uint32  
 RingState : uint16  
 RingOpenStatus : uint16  
 RingSpeed : uint16  
 BurstErrors : uint32  
 ACErrors : uint32  
 AbortTransErrors : uint32  
 InternalErrors : uint32  
 LostFrameErrors : uint32  
 ReceiveCongestions : uint32  
 FrameCopiedErrors : uint32  
 TokenErrors : uint32  
 SoftErrors : uint32  
 HardErrors : uint32  
 SignalLossCount : uint32  
 TransmittedBeacons : uint32  
 Recoverys : uint32  
 LobeWires : uint32  
 Removes : uint32  
 Singles : uint32  
 FrequencyErrors : uint32

**ExtraCapacityGroup**  
 (See Core Model)

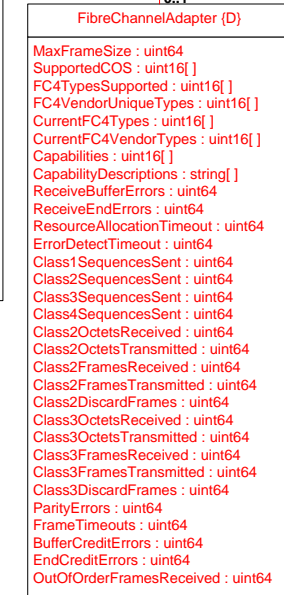
**FibrePort ActiveLogin (D)**

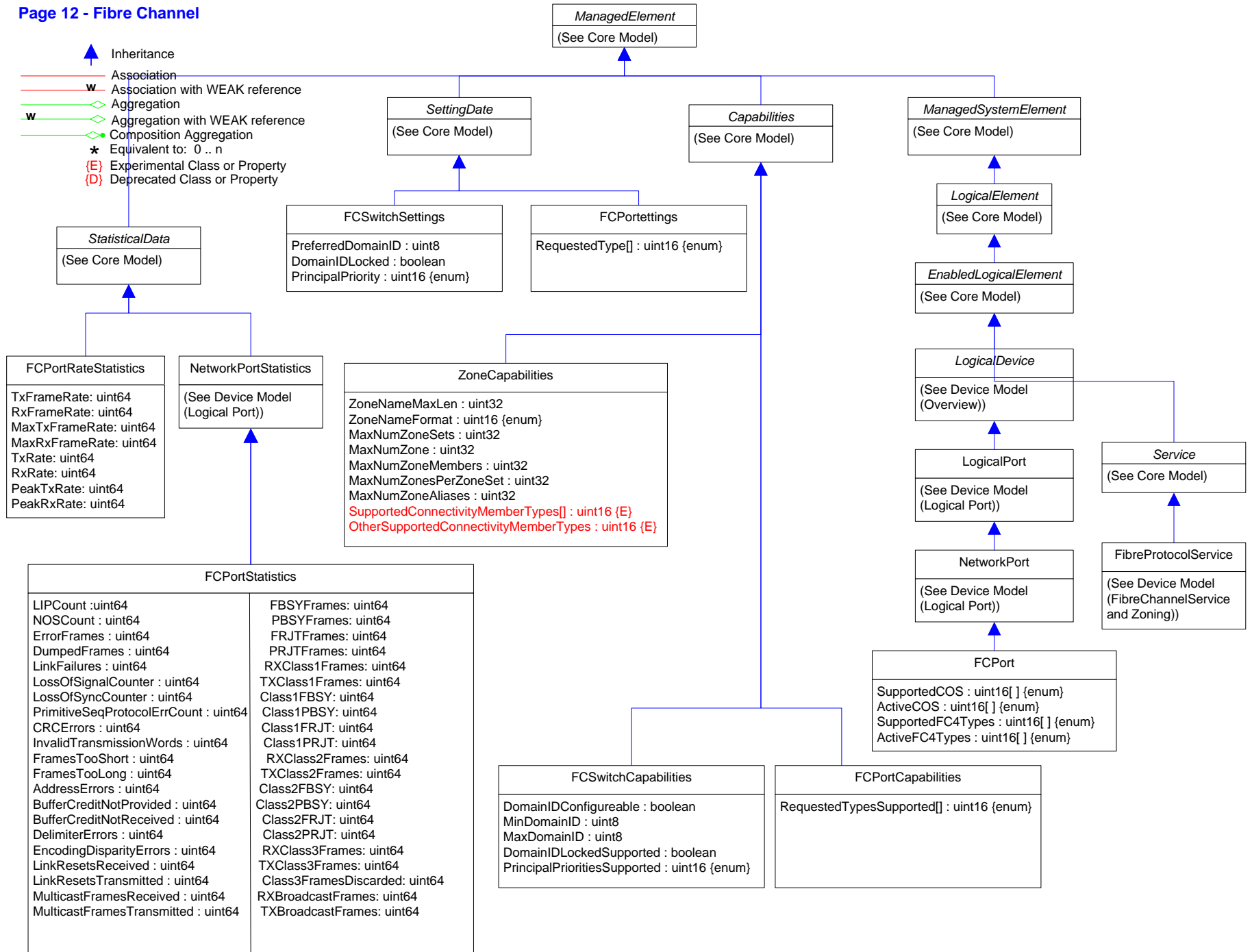











0..1

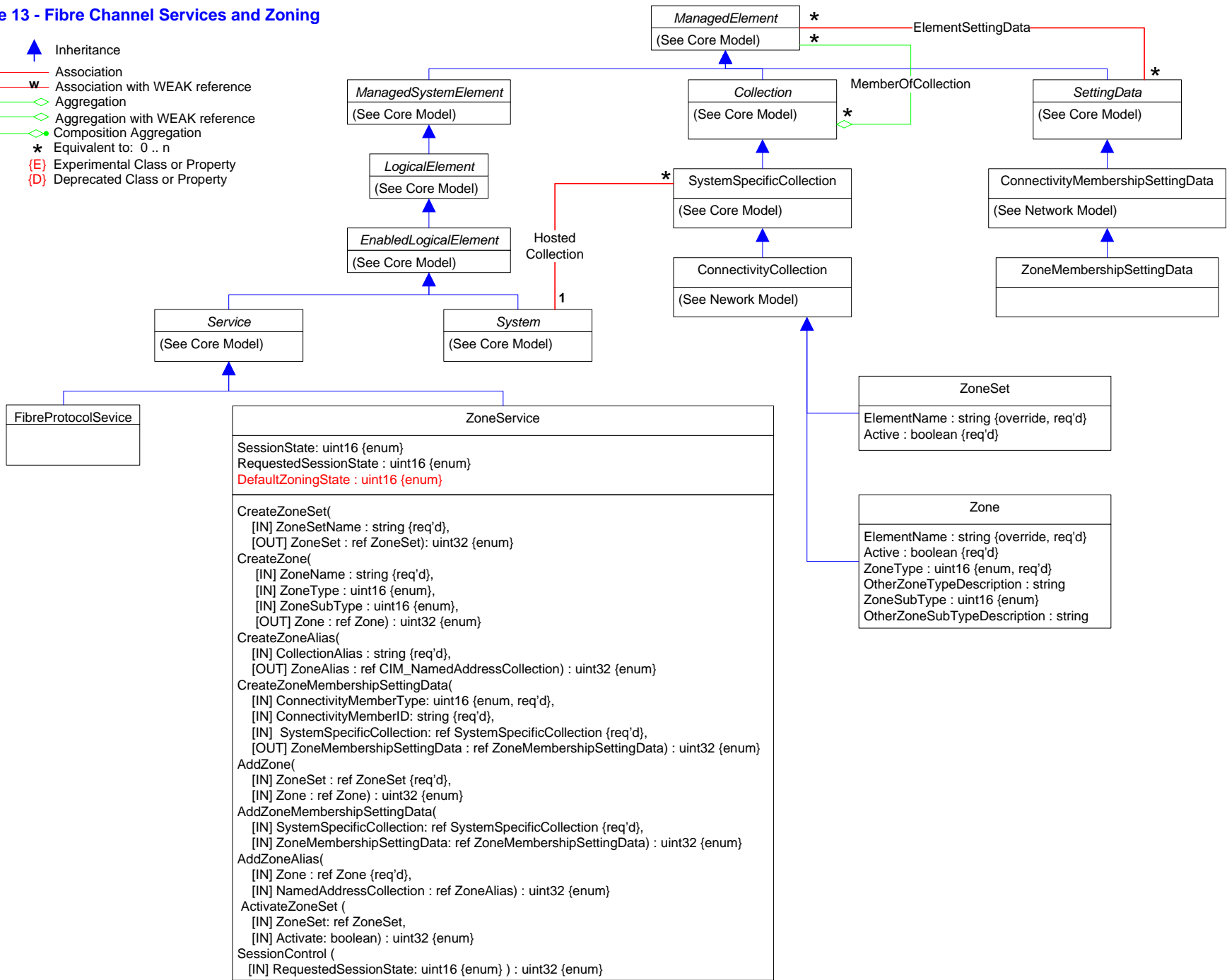


0..1





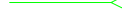






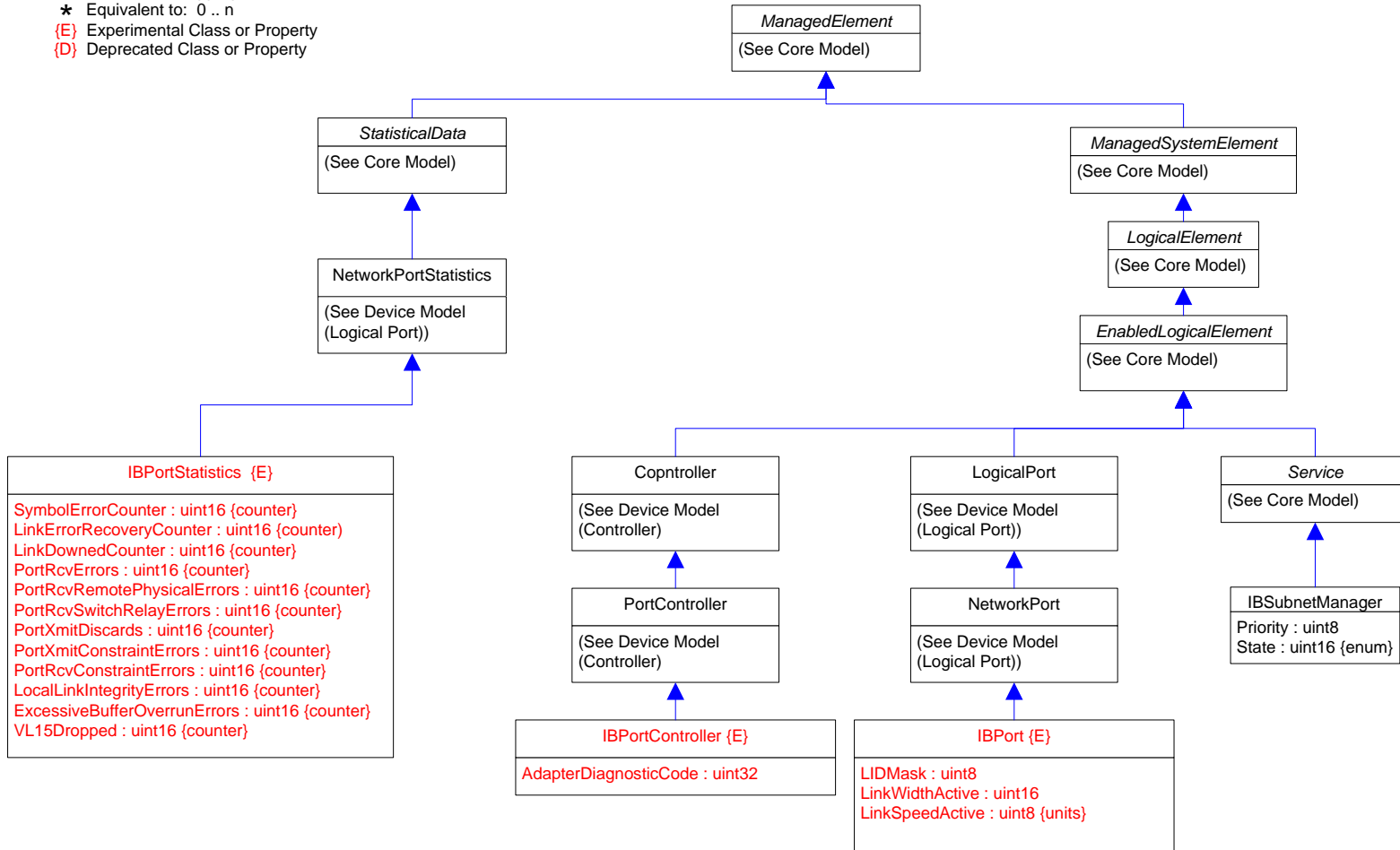


-  Inheritance
-  Association
-  Association with WEAK reference
-  Aggregation
-  Aggregation with WEAK reference
-  Composition Aggregation
-  Equivalent to: 0 .. n
-  {E} Experimental Class or Property
-  {D} Deprecated Class or Property



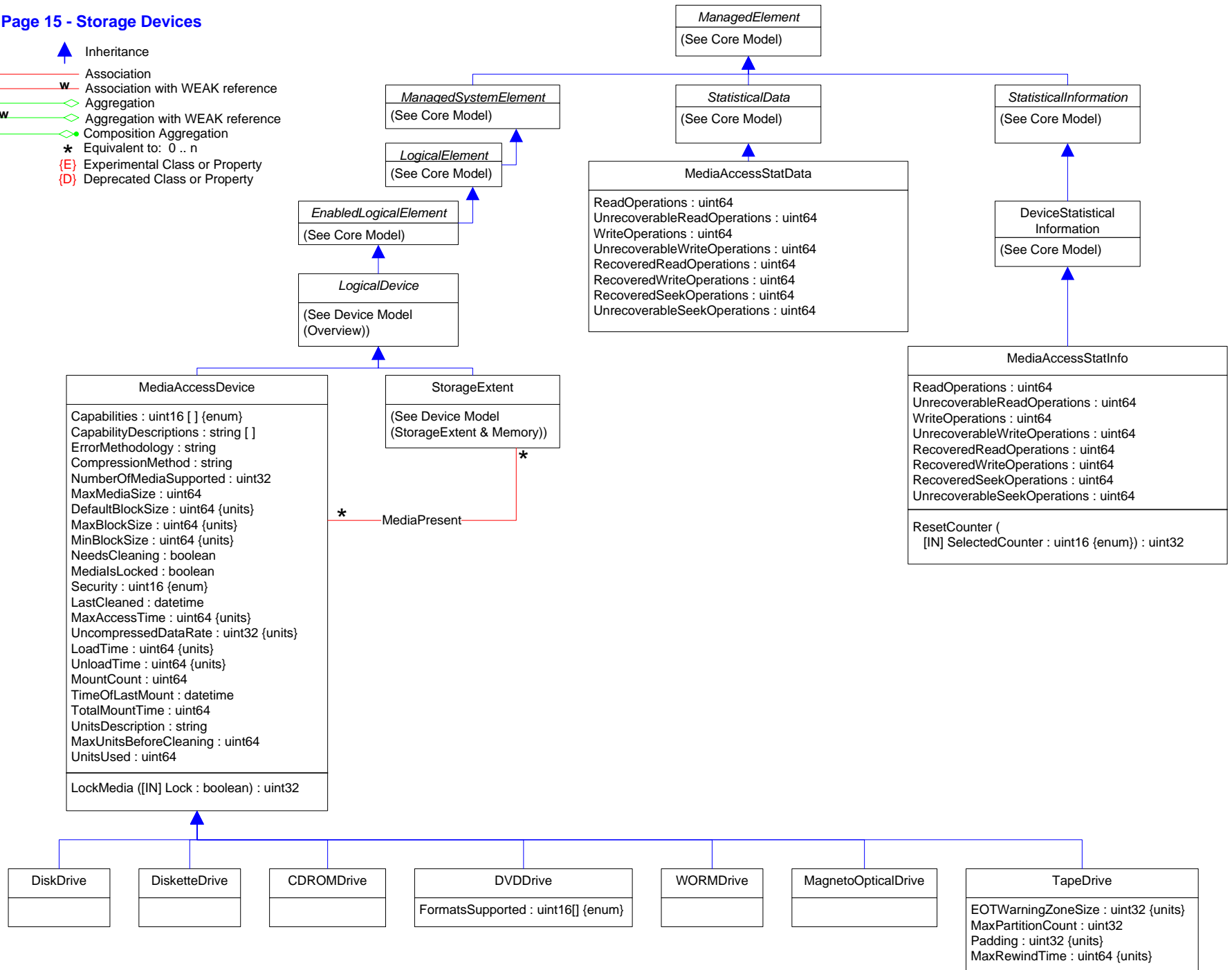
Page 14 - Infiniband

-  Inheritance
-  Association
-  Association with WEAK reference
-  Aggregation
-  Aggregation with WEAK reference
-  Composition Aggregation
-  Equivalent to: 0 .. n
-  (E) Experimental Class or Property
-  (D) Deprecated Class or Property













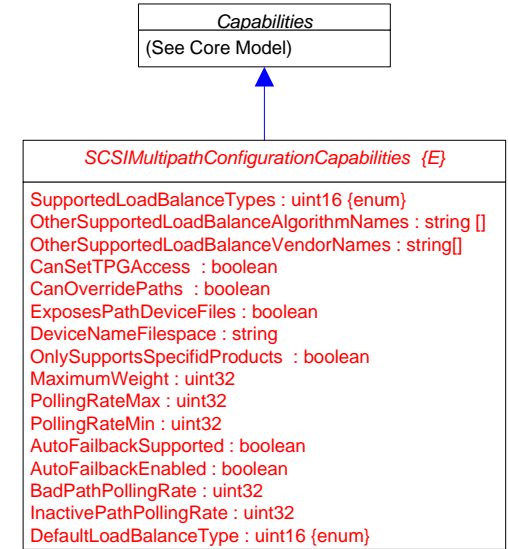
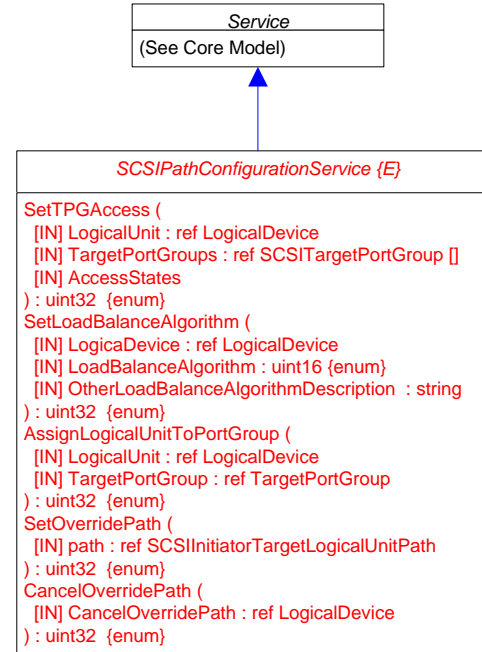
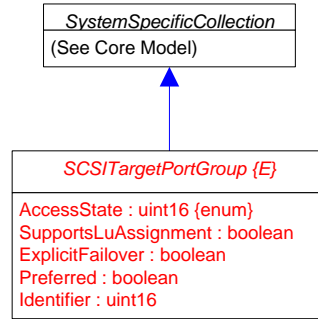
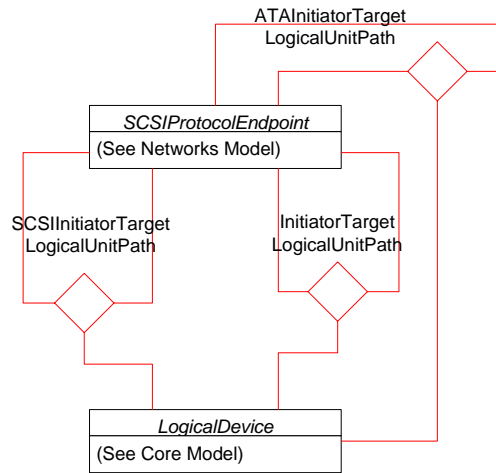
Page 15 - Storage Devices

- ▲ Inheritance
- Association
- w Association with WEAK reference
- ◇ Aggregation
- w◇ Aggregation with WEAK reference
- ◊ Composition Aggregation
- \* Equivalent to: 0 .. n
- {E} Experimental Class or Property
- {D} Deprecated Class or Property



Page 16 - Storage Mutipath

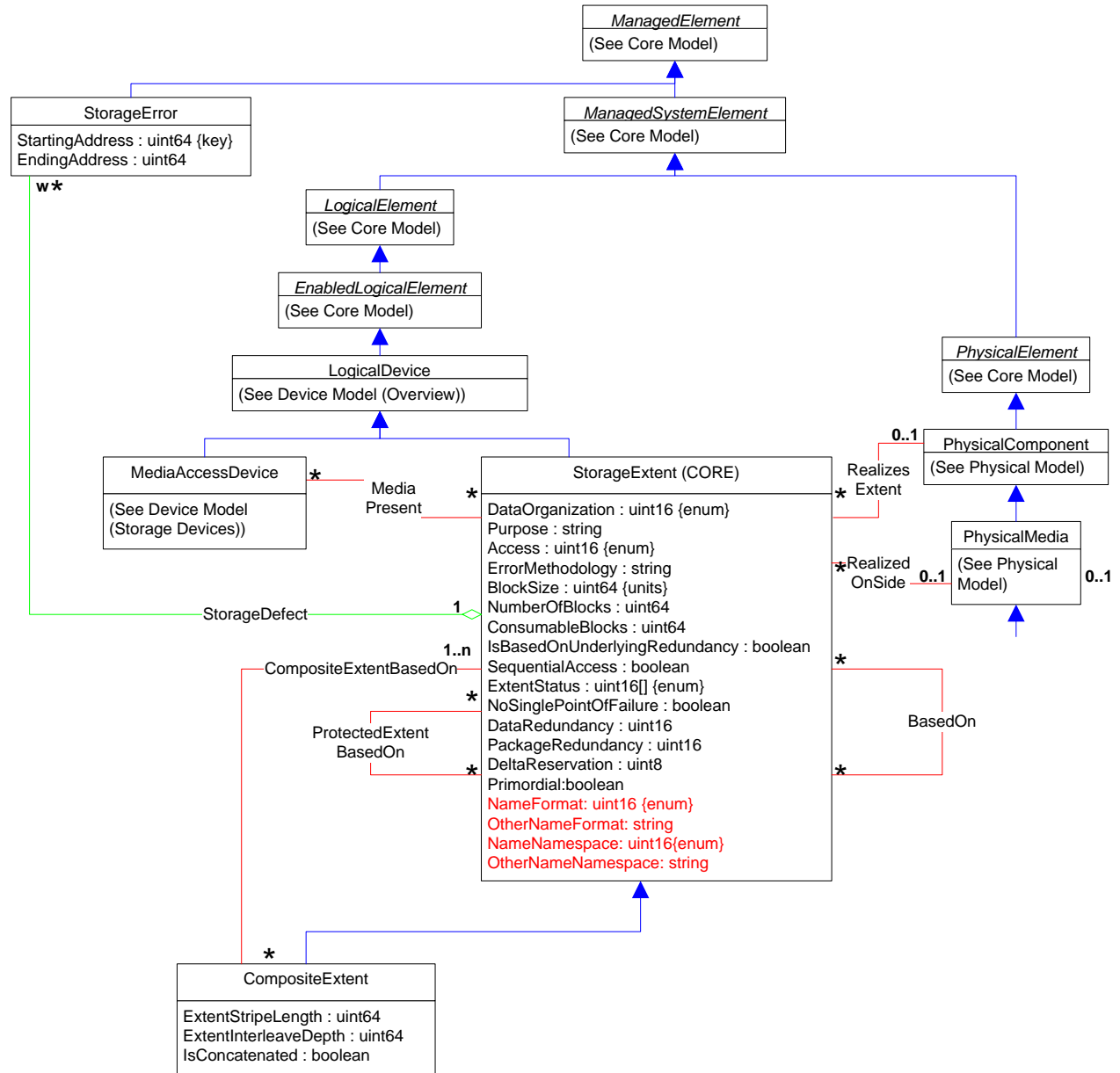
-  Inheritance
-  Association
-  Association with WEAK reference
-  Aggregation
-  Aggregation with WEAK reference
-  Composition Aggregation
-  Composition
-  Equivalent to: 0 .. n
-  {E} Experimental Class or Property
-  {D} Deprecated Class or Property

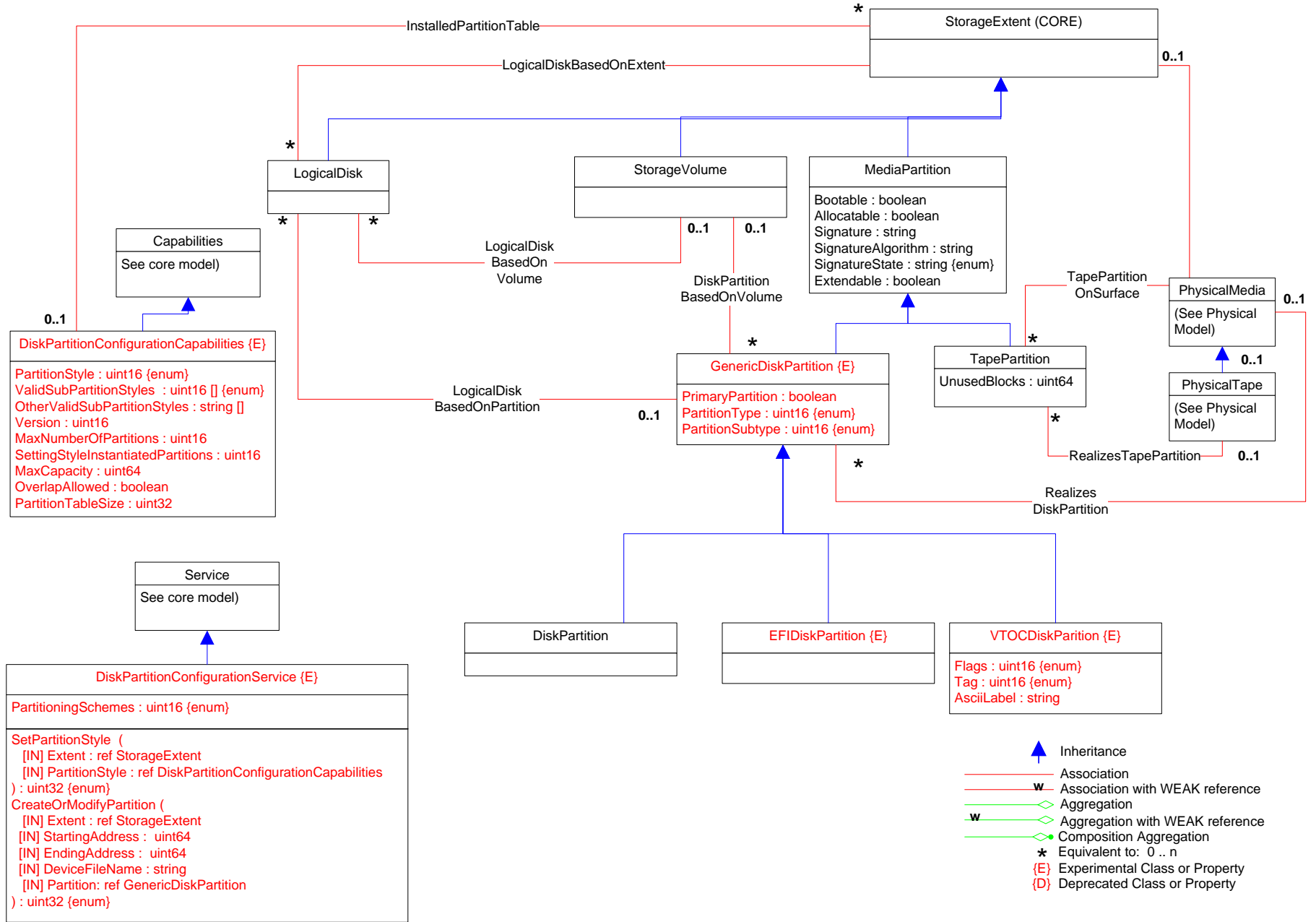




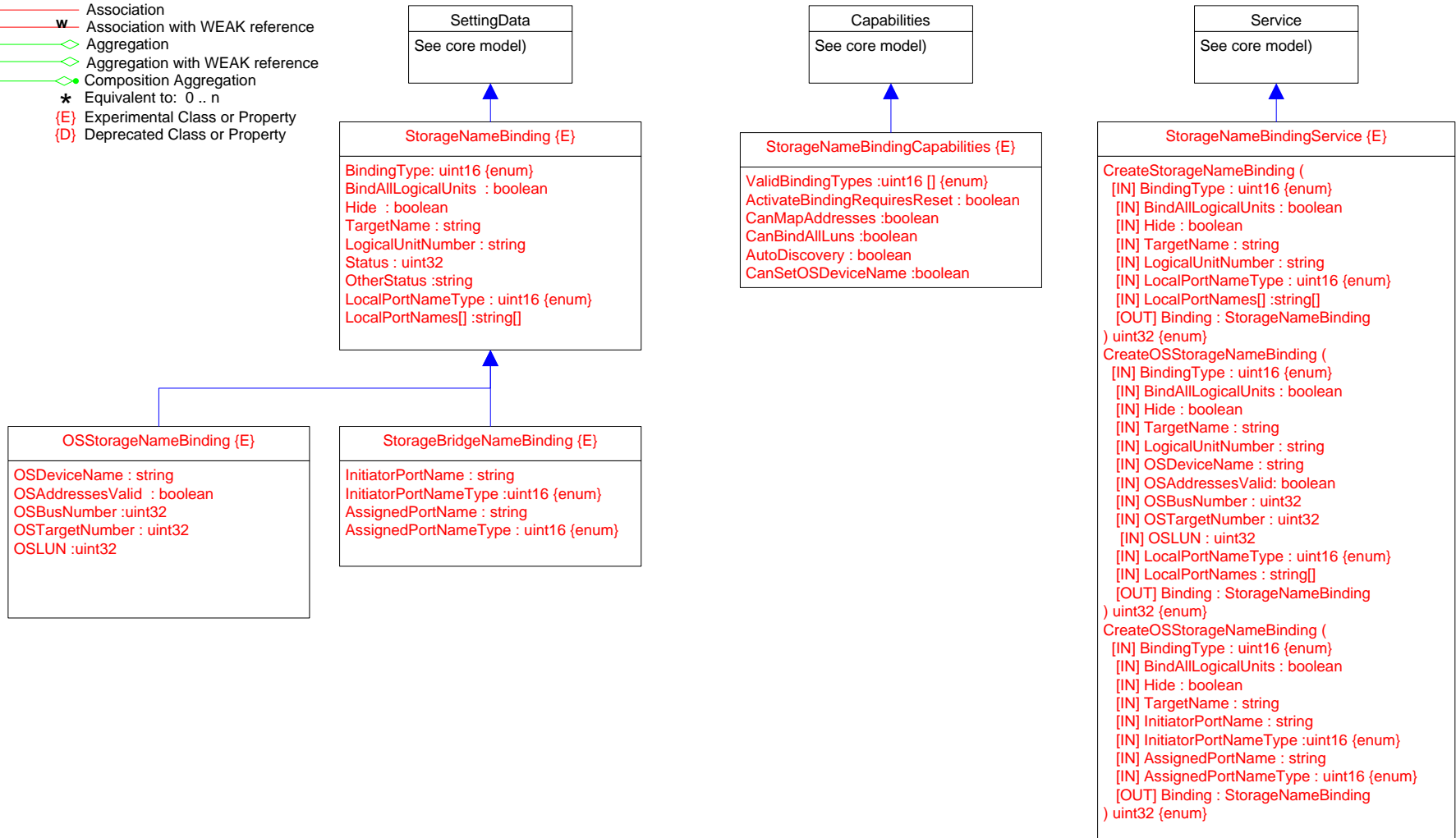
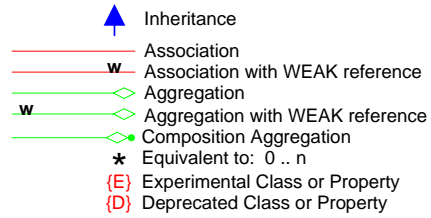
Page 17- StorageExtent

- ▲ Inheritance
- Association
- w Association with WEAK reference
- ◇ Aggregation
- w◇ Aggregation with WEAK reference
- ◇ Composition Aggregation
- \* Equivalent to: 0 .. n
- {E} Experimental Class or Property
- {D} Deprecated Class or Property



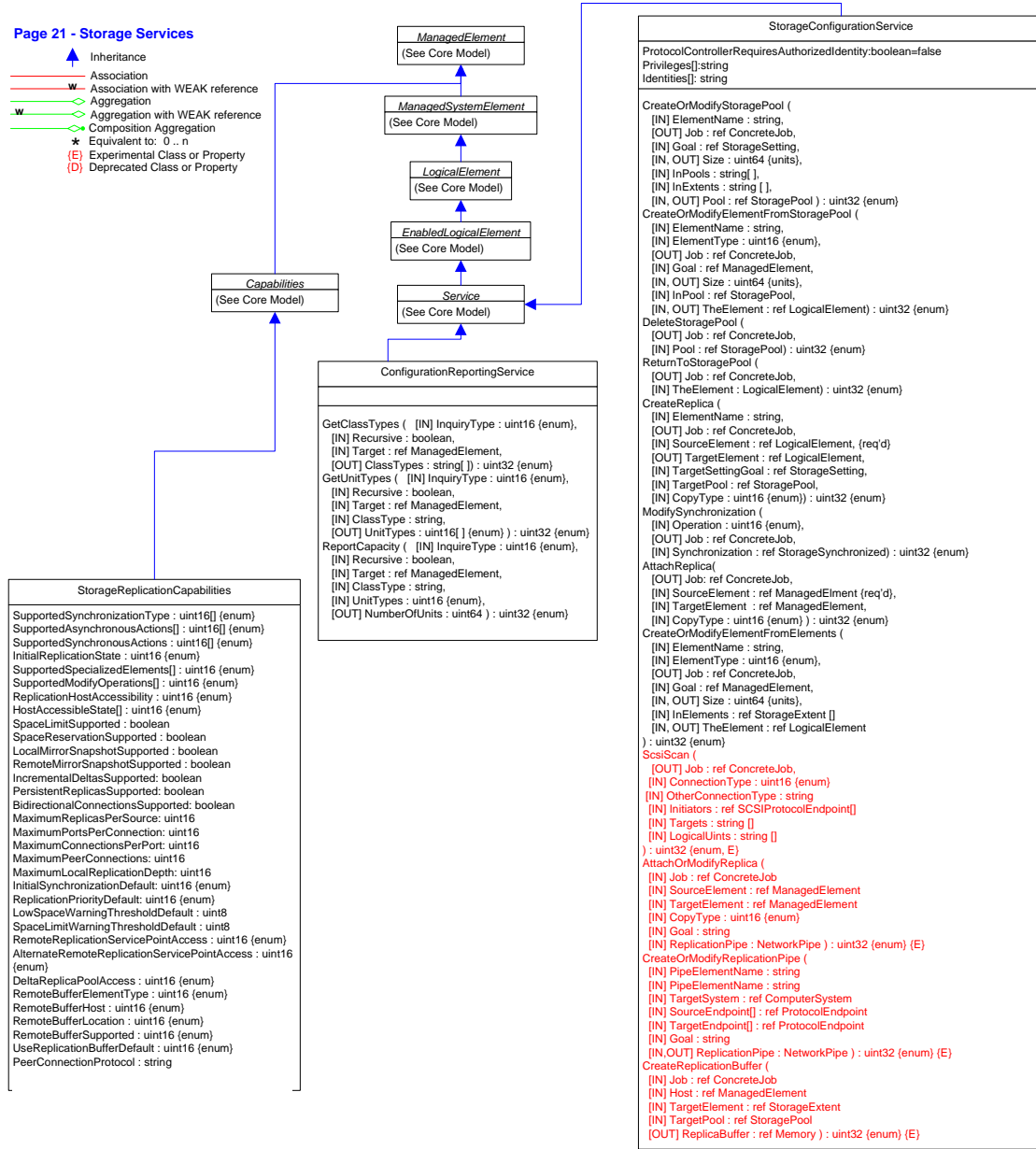


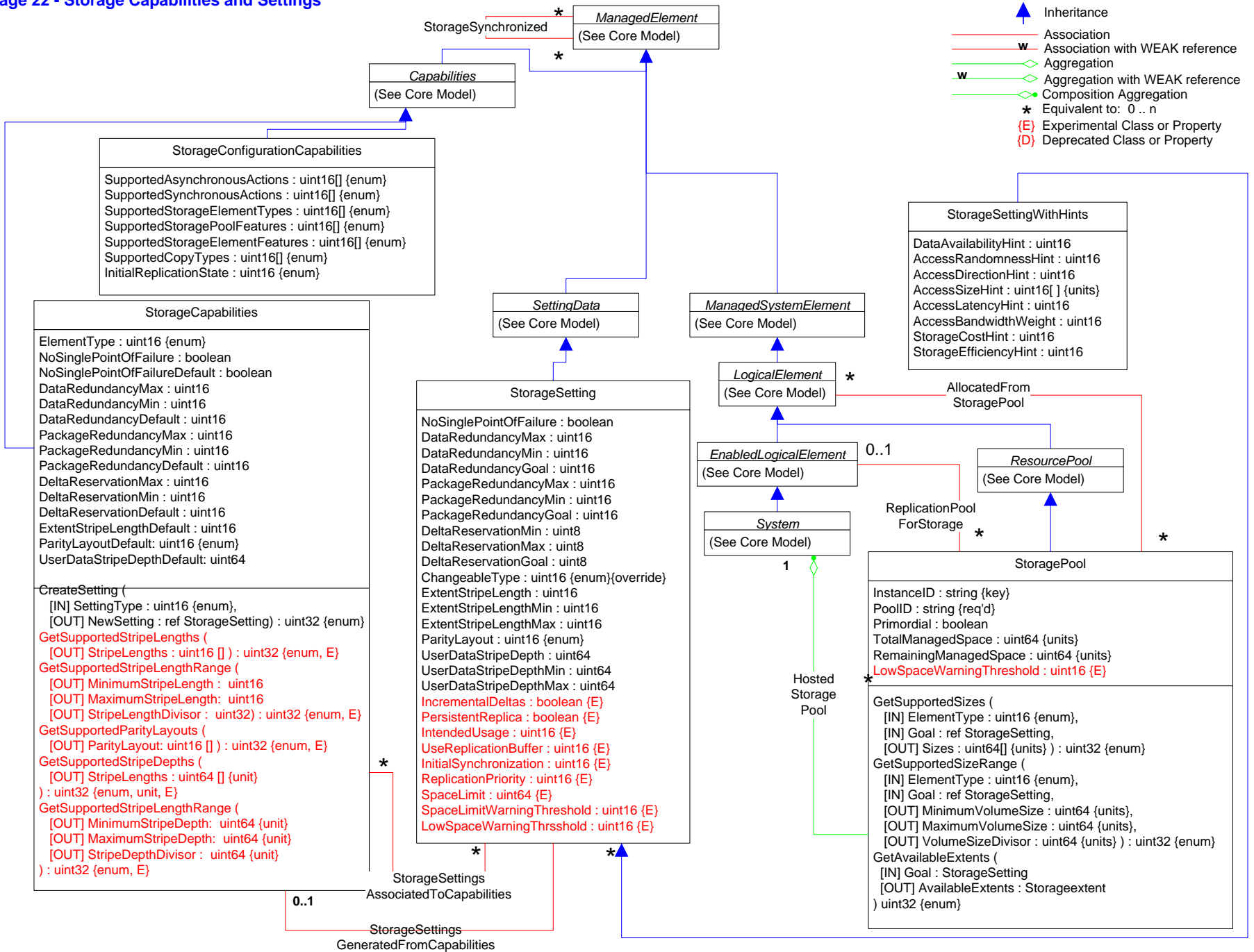
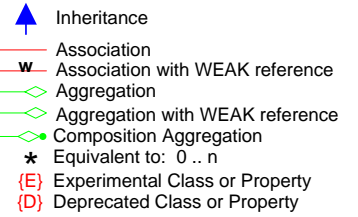
## Page 20 - Storage Name Binding

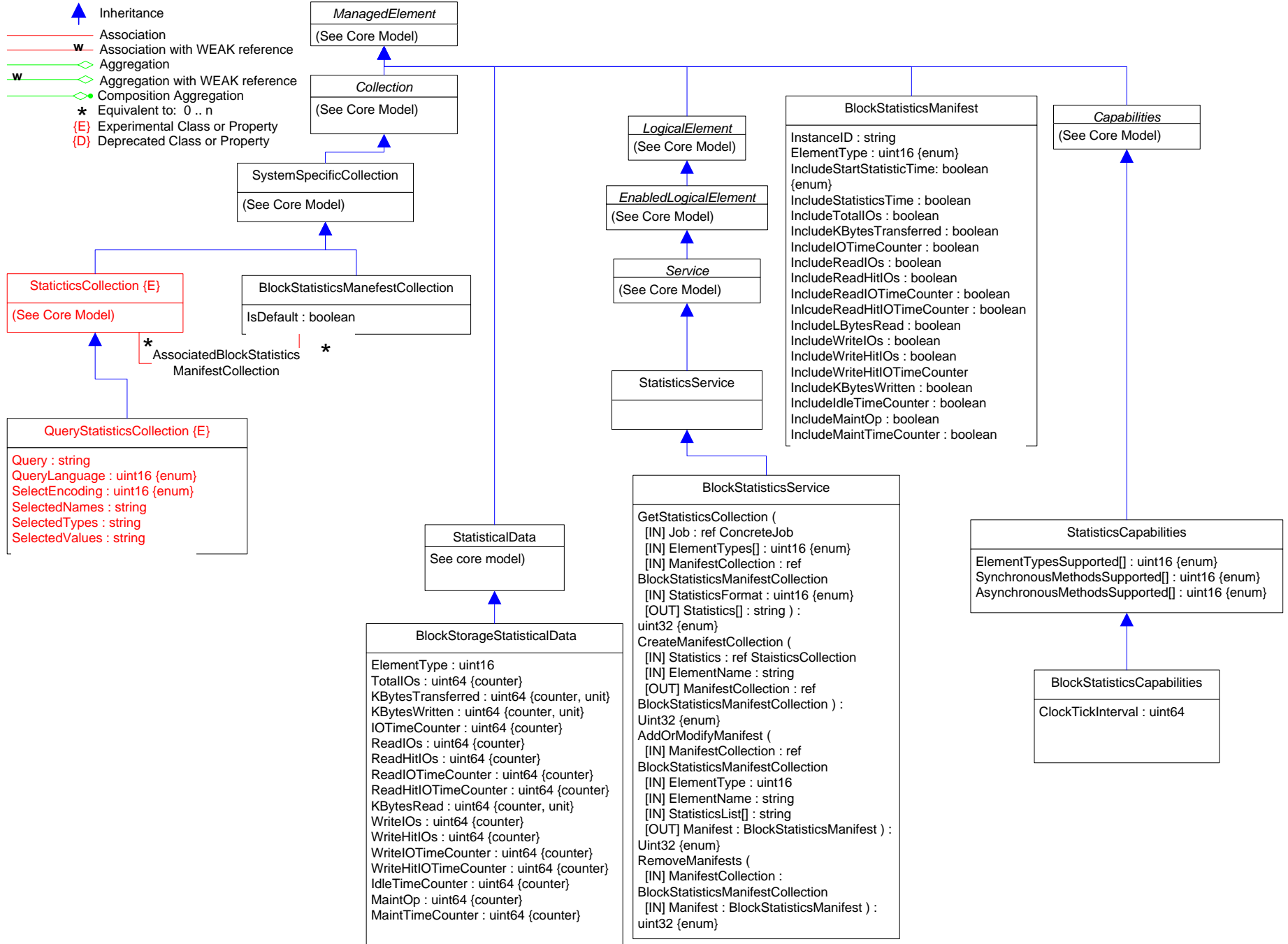


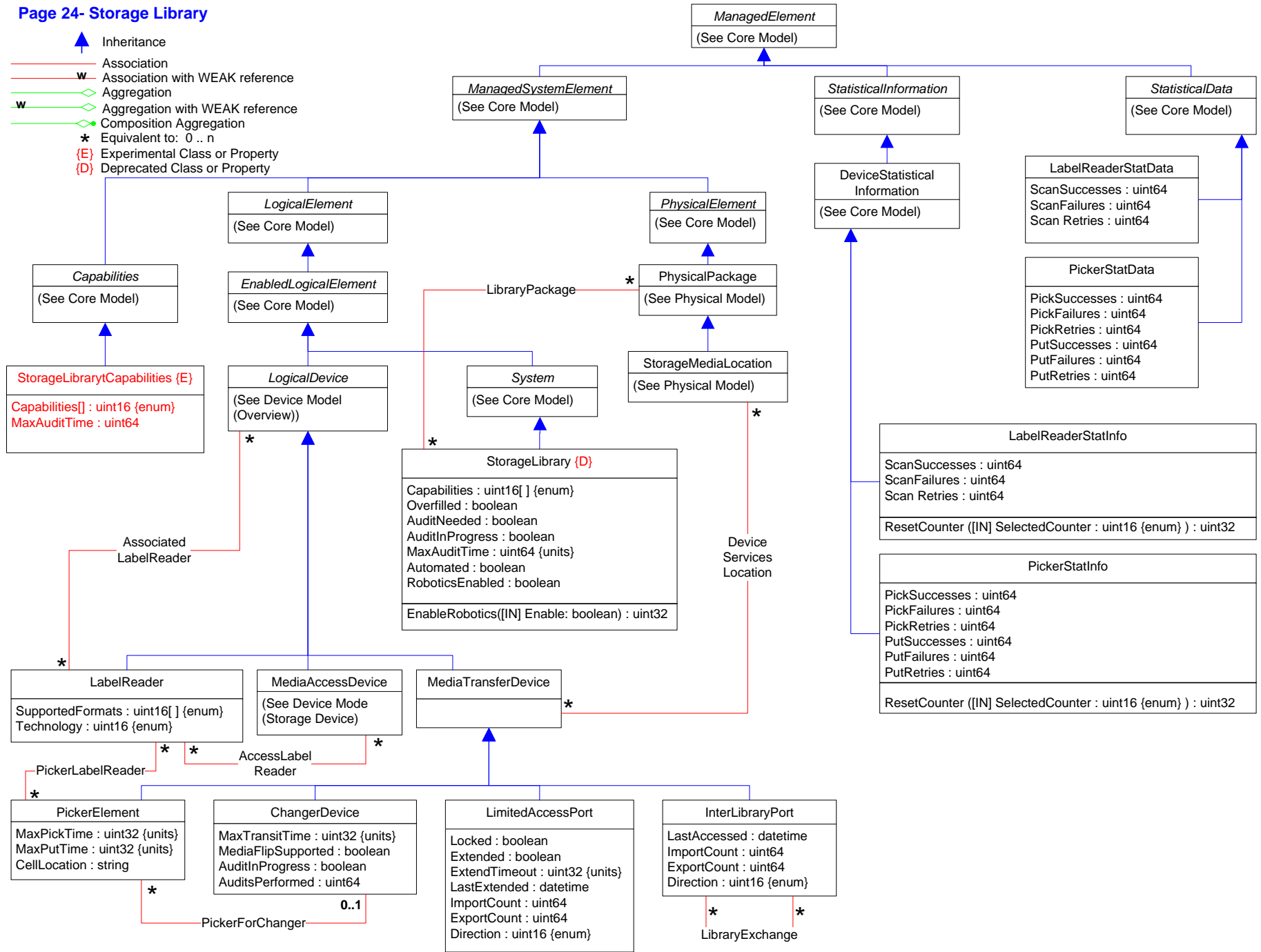


- ▲ Inheritance
- Association
- w Association with WEAK reference
- > Aggregation
- w> Aggregation with WEAK reference
- o Composition Aggregation
- ★ Equivalent to: 0..n
- (E) Experimental Class or Property
- (D) Deprecated Class or Property














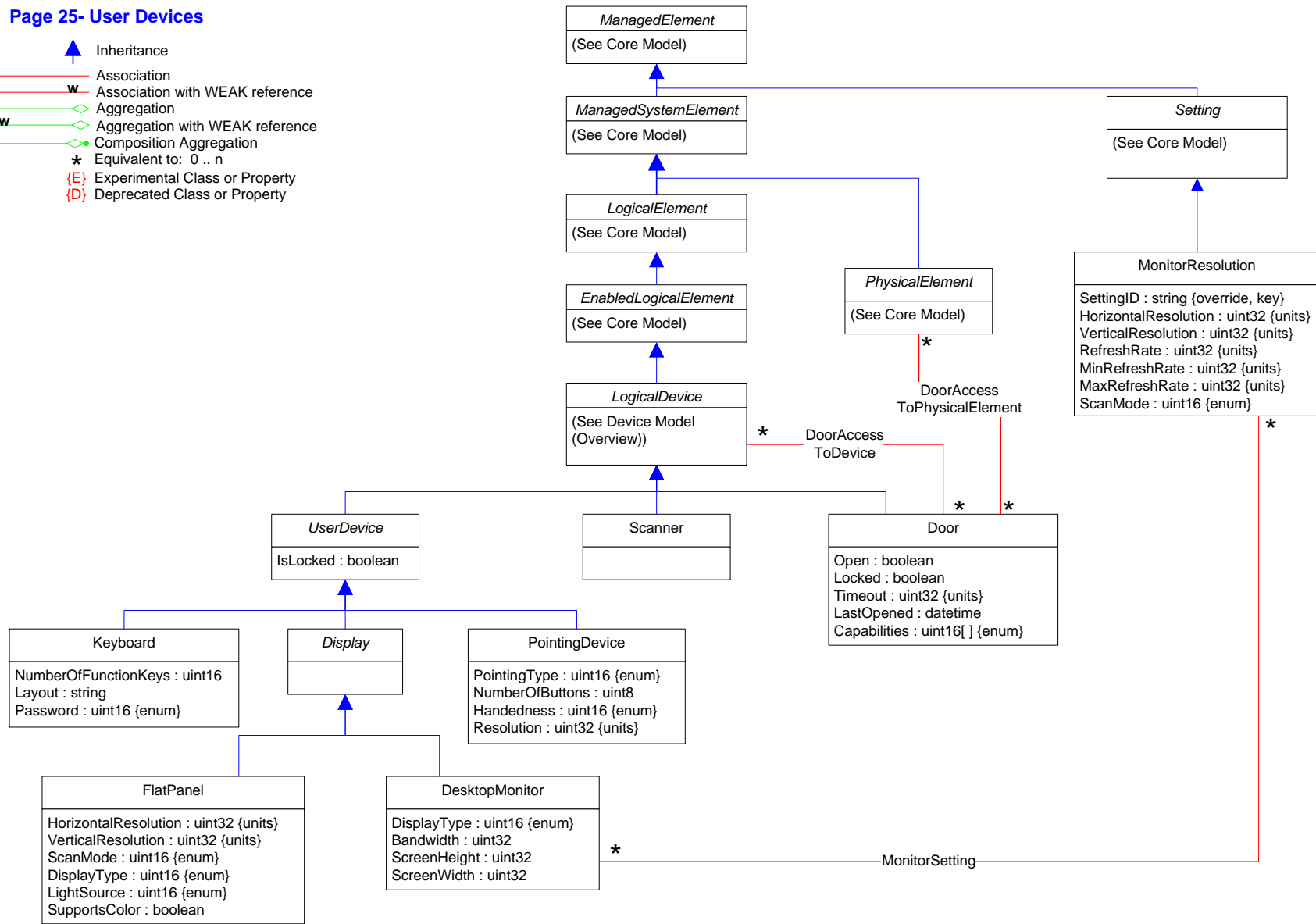















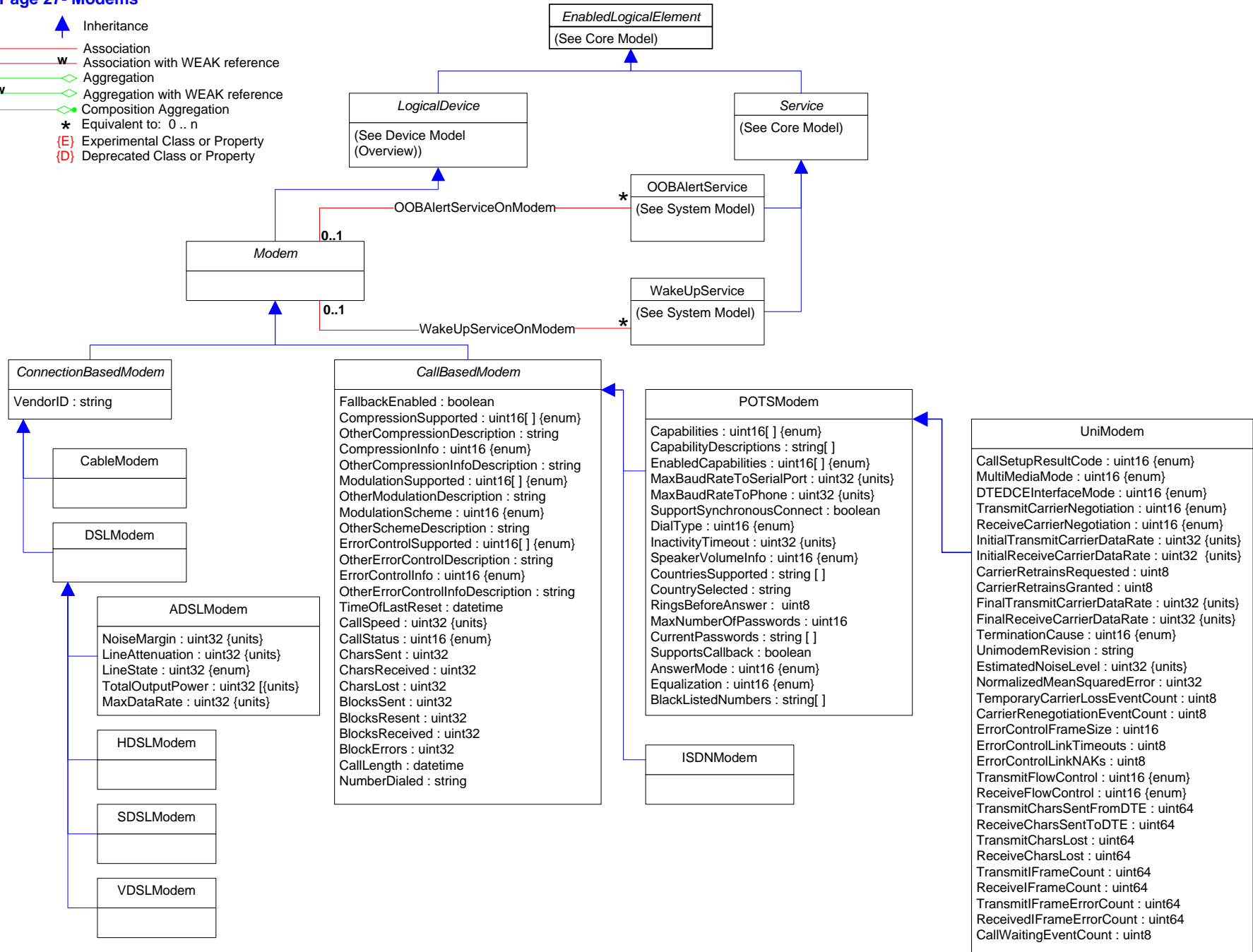
# Page 25- User Devices

-  Inheritance
-  Association
-  Association with WEAK reference
-  Aggregation
-  Aggregation with WEAK reference
-  Composition Aggregation
-  Equivalent to: 0 .. n
-  {E} Experimental Class or Property
-  {D} Deprecated Class or Property



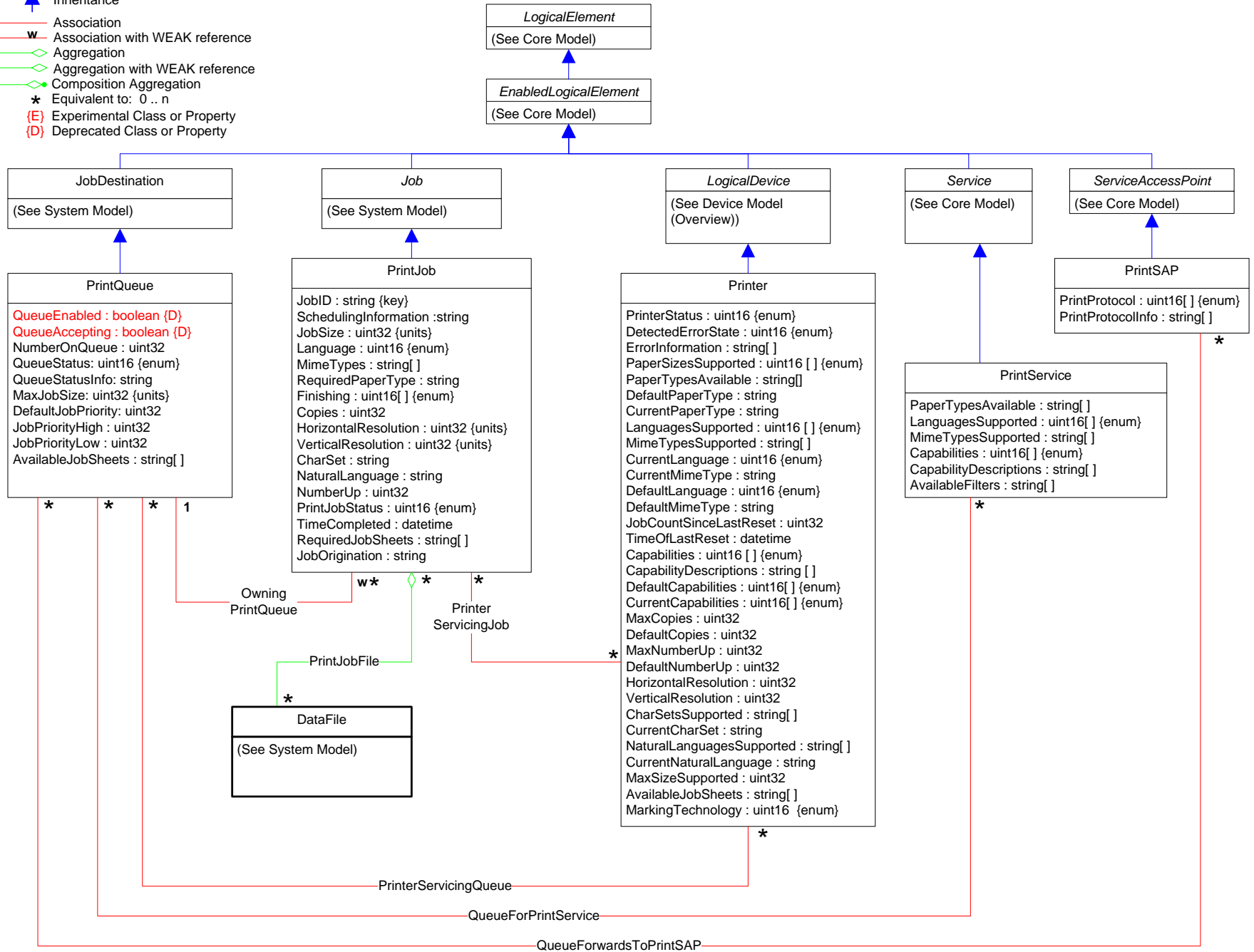











-  Inheritance
-  Association
-  Association with WEAK reference
-  Aggregation
-  Aggregation with WEAK reference
-  Composition Aggregation
-  Equivalent to: 0..n
-  (E) Experimental Class or Property
-  (D) Deprecated Class or Property

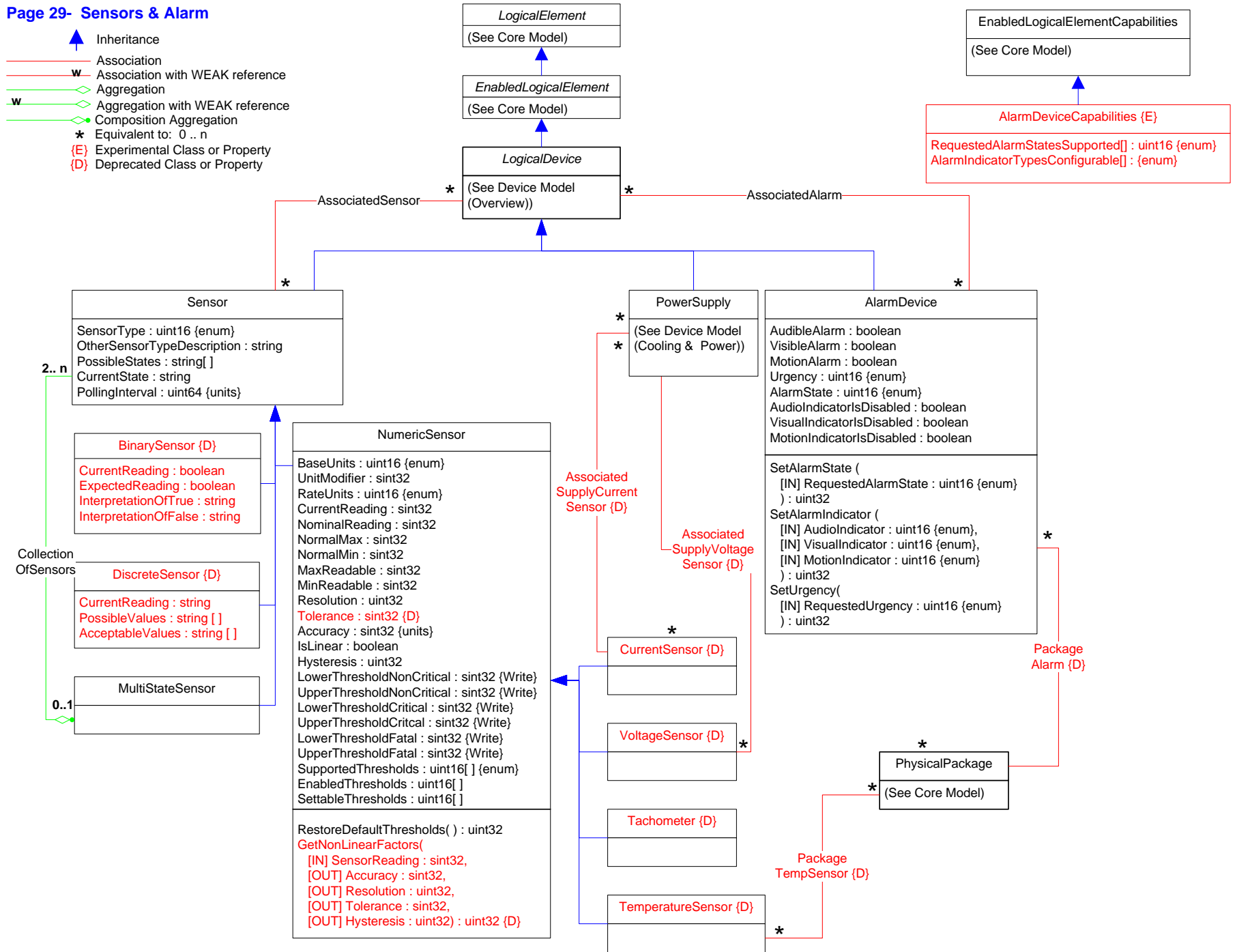









Page 28- Printer, Print Jobs, & Print Services

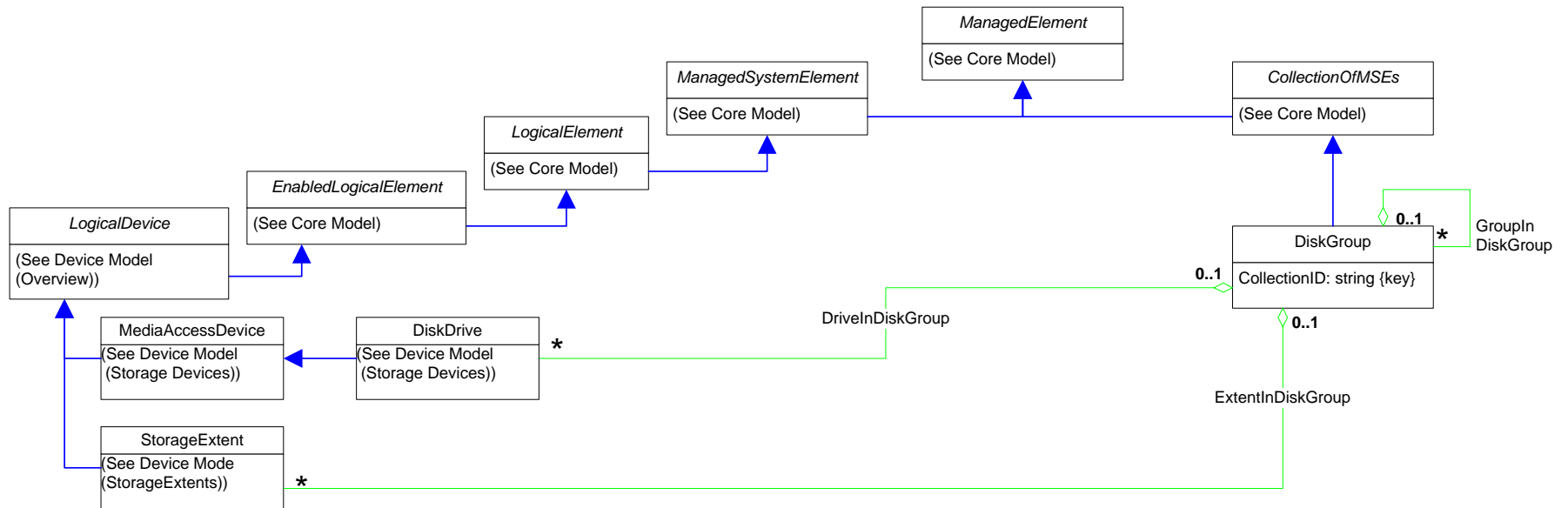
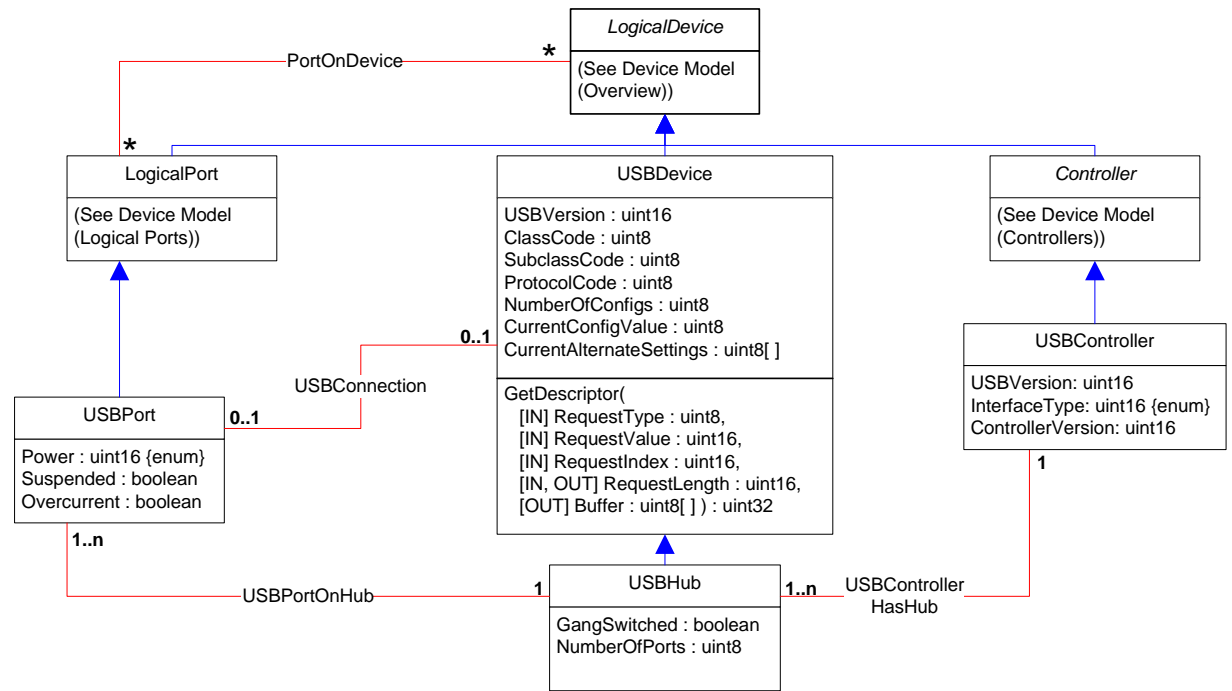
- ▲ Inheritance
- Association
- w Association with WEAK reference
- ◇ Aggregation
- w◇ Aggregation with WEAK reference
- ◇ Composition Aggregation
- \* Equivalent to: 0..n
- (E) Experimental Class or Property
- (D) Deprecated Class or Property



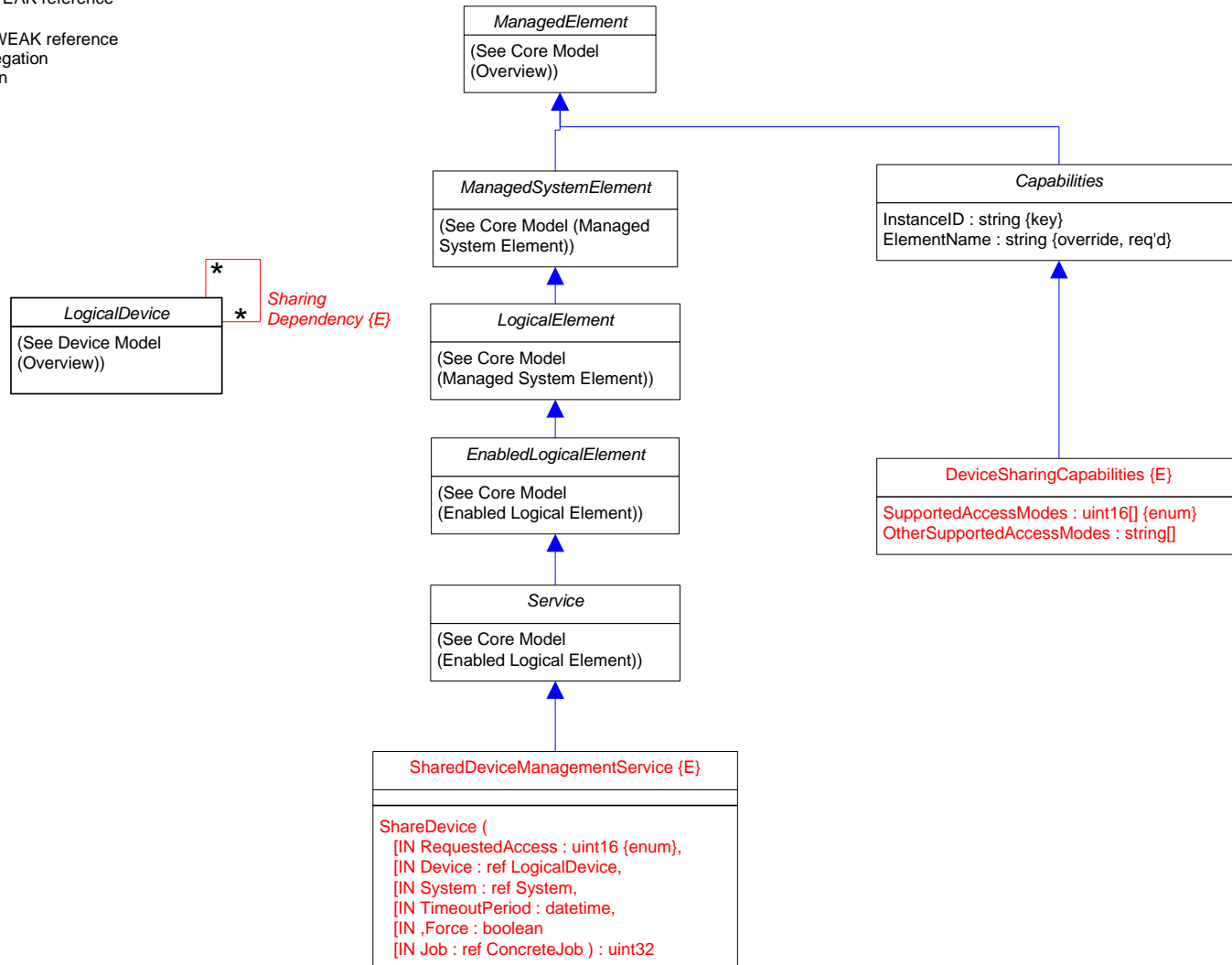
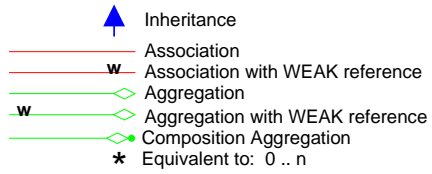
-  Inheritance
-  Association
-  Association with WEAK reference
-  Aggregation
-  Aggregation with WEAK reference
-  Composition Aggregation
-  Equivalent to: 0 .. n
-  Experimental Class or Property
-  Deprecated Class or Property

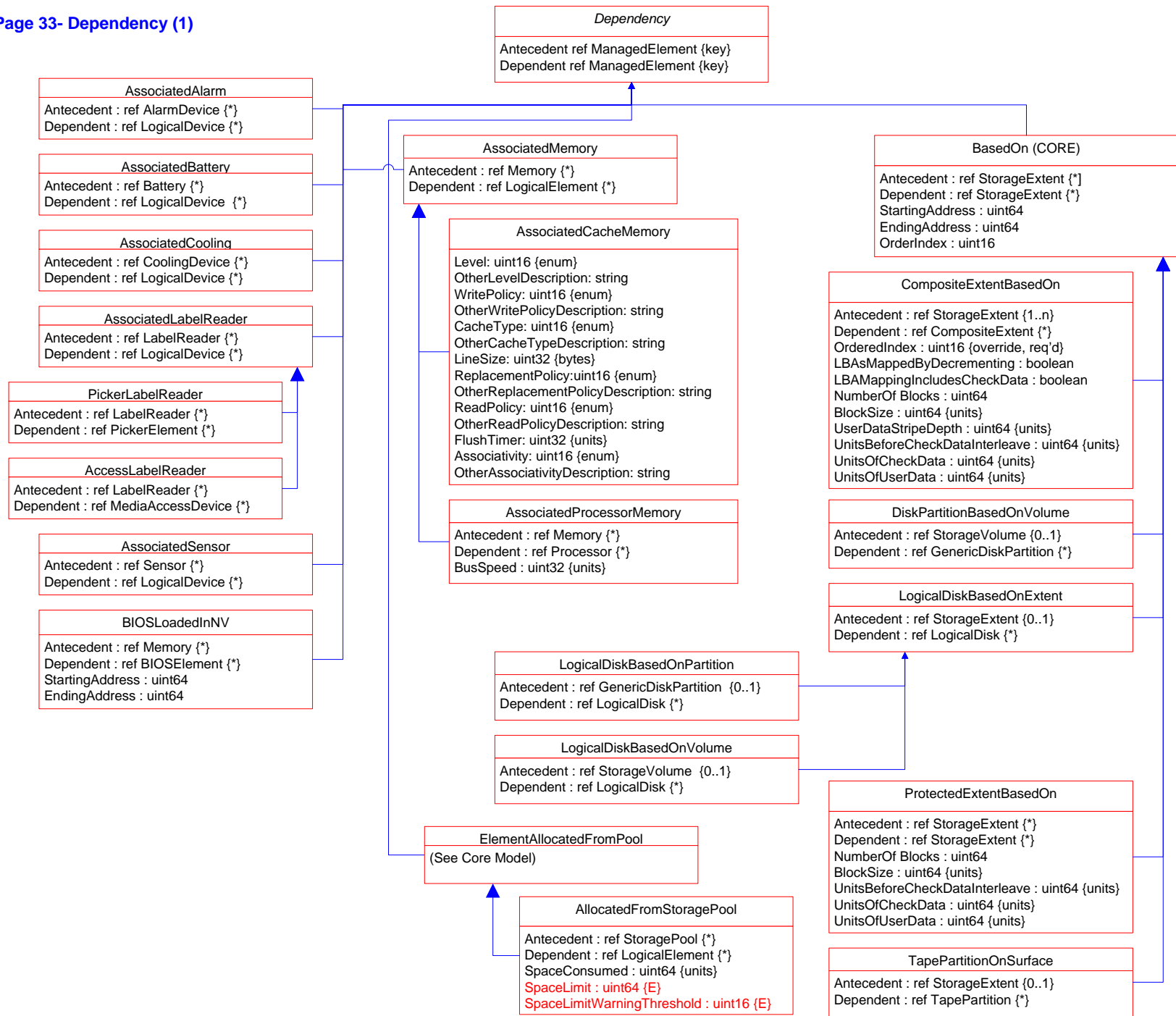


-  Inheritance
-  Association
-  Association with WEAK reference
-  Aggregation
-  Aggregation with WEAK reference
-  Composition Aggregation
-  Equivalent to: 0 .. n

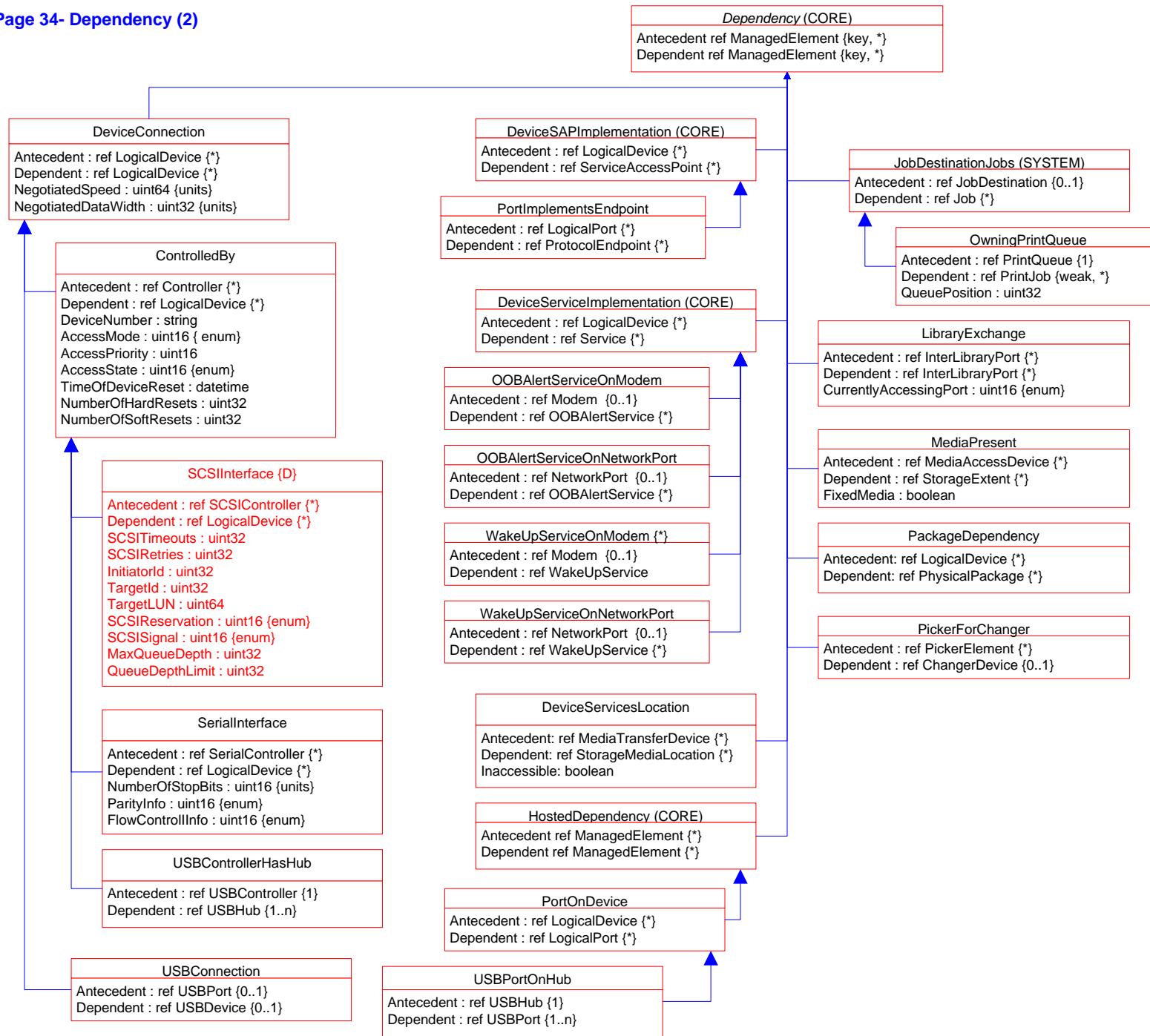


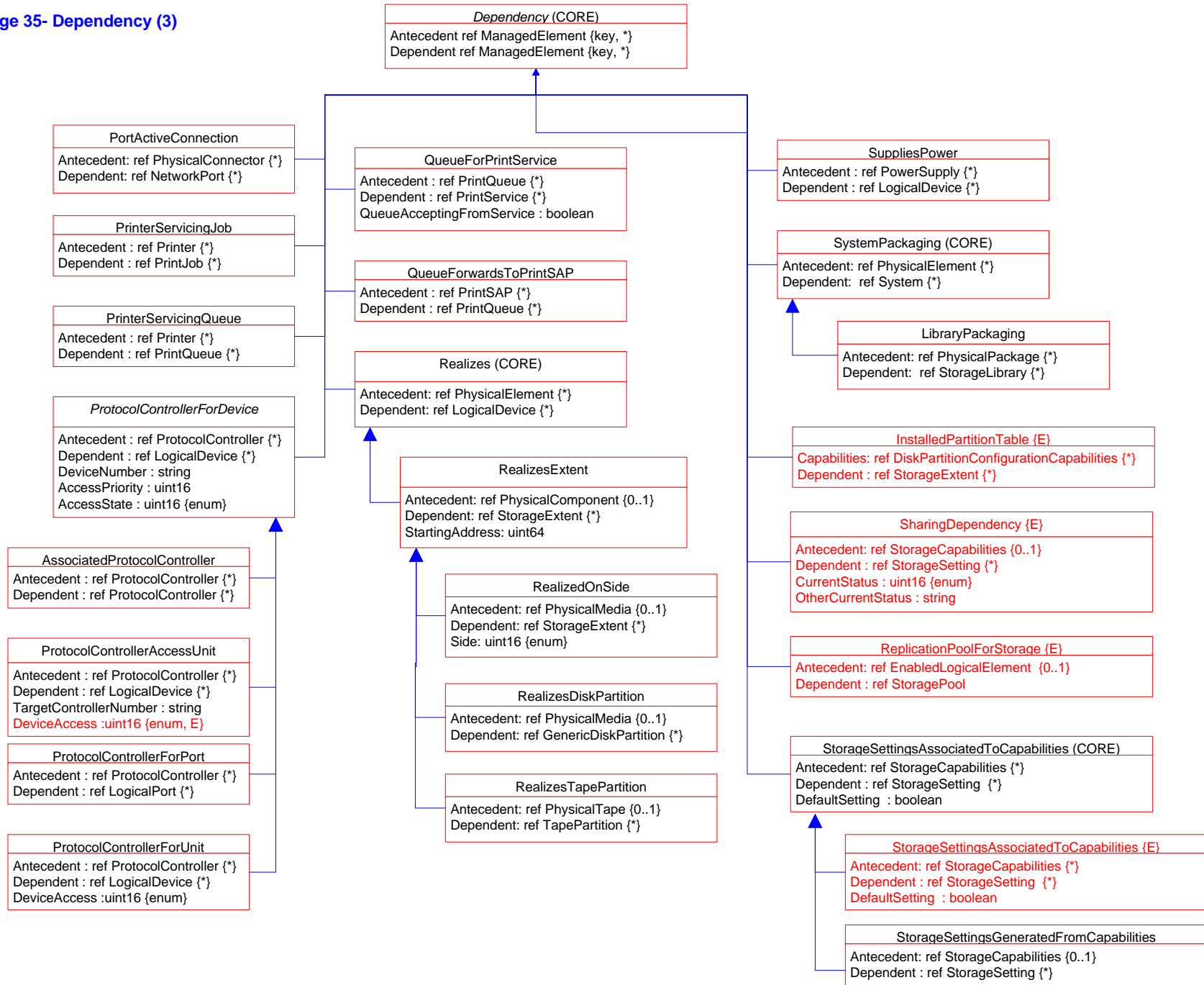
## Page 32- Device Sharing



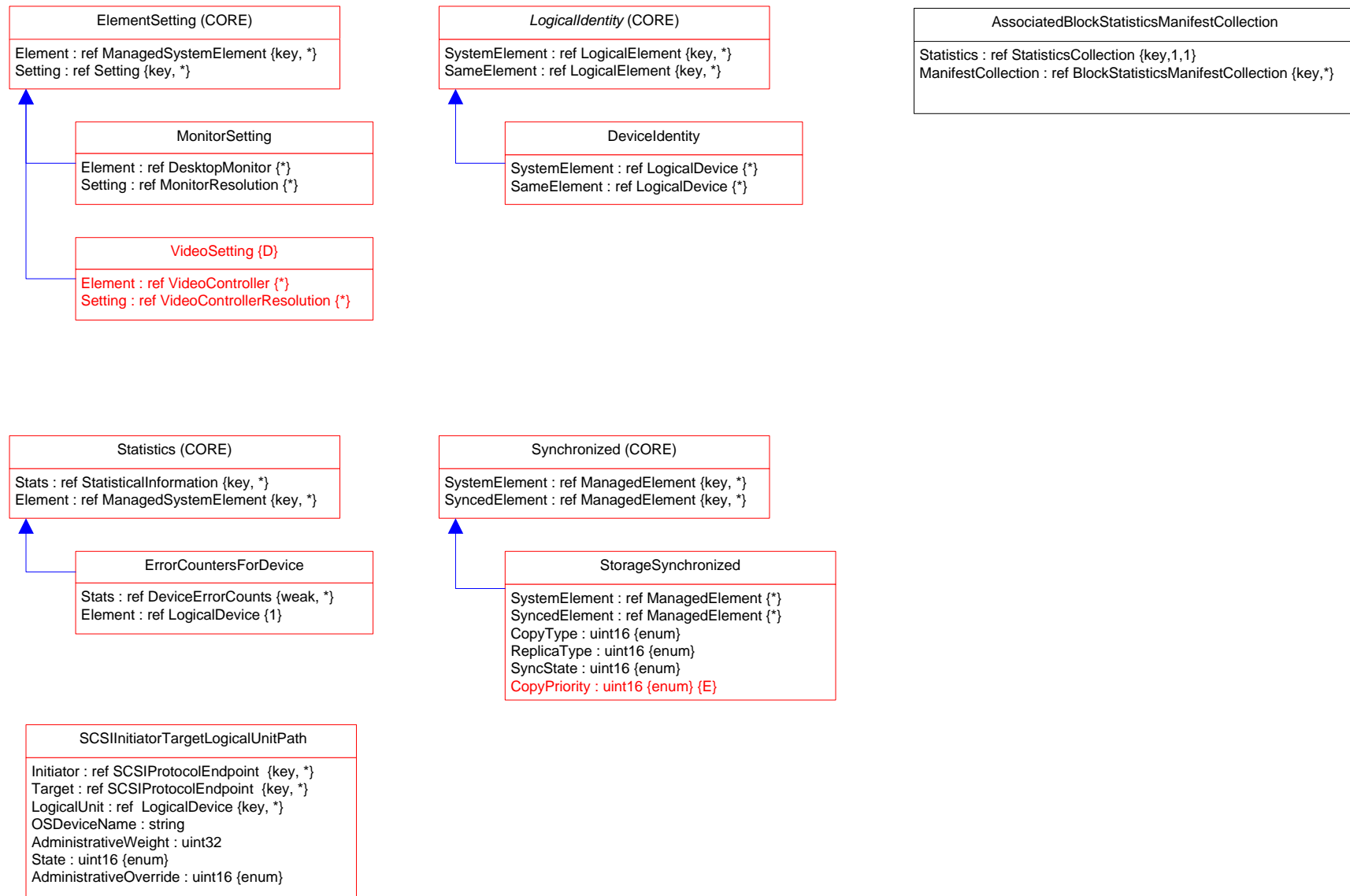


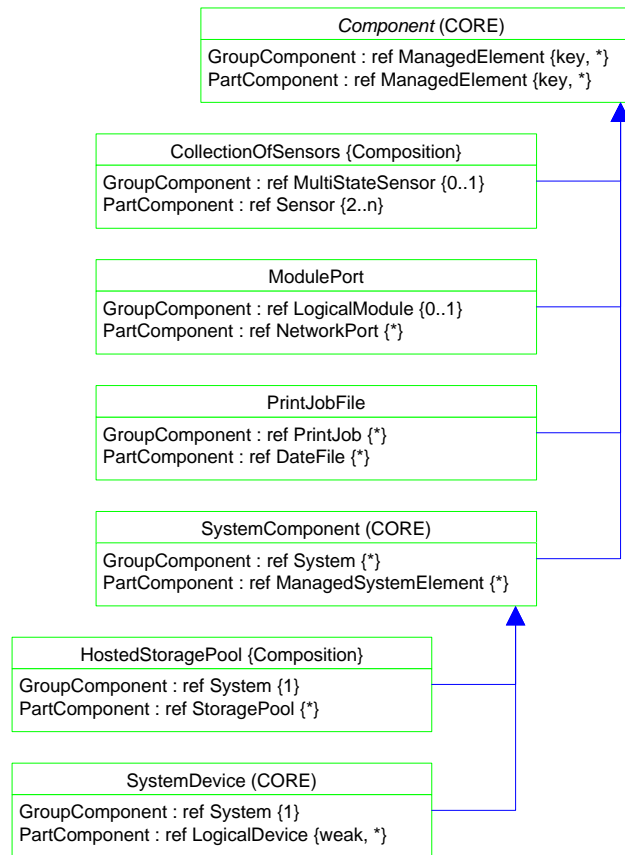
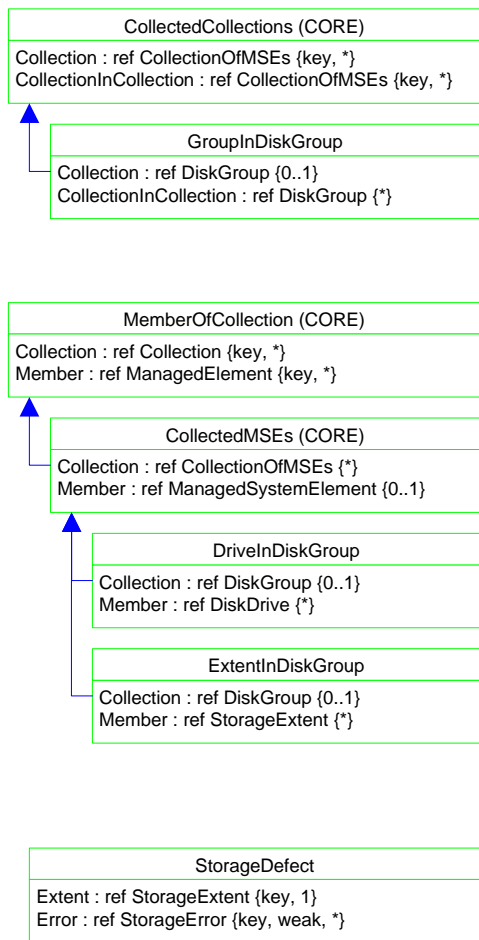


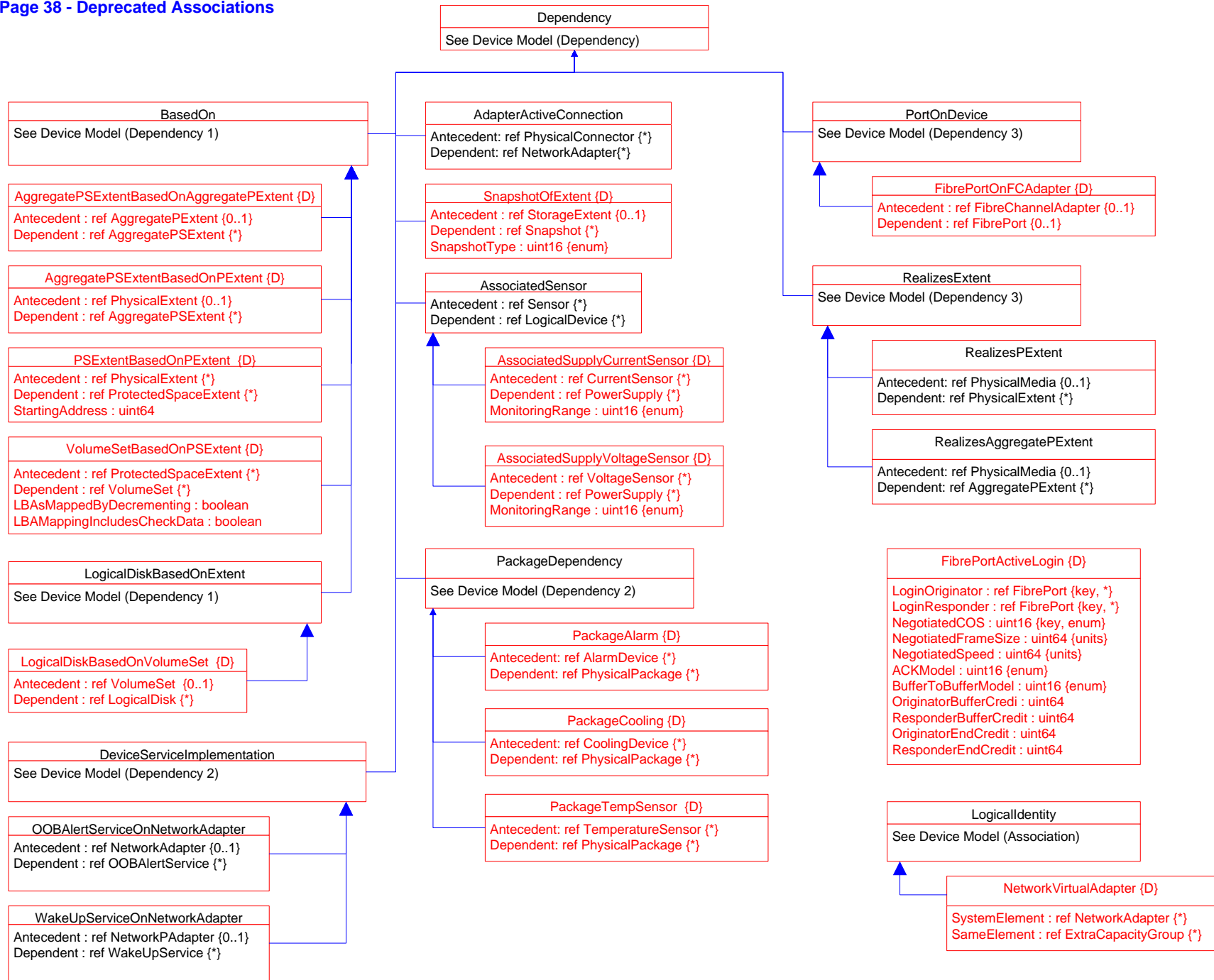




Page 36- Association Hierarchy







Page 39 - Deprecated Aggregations

