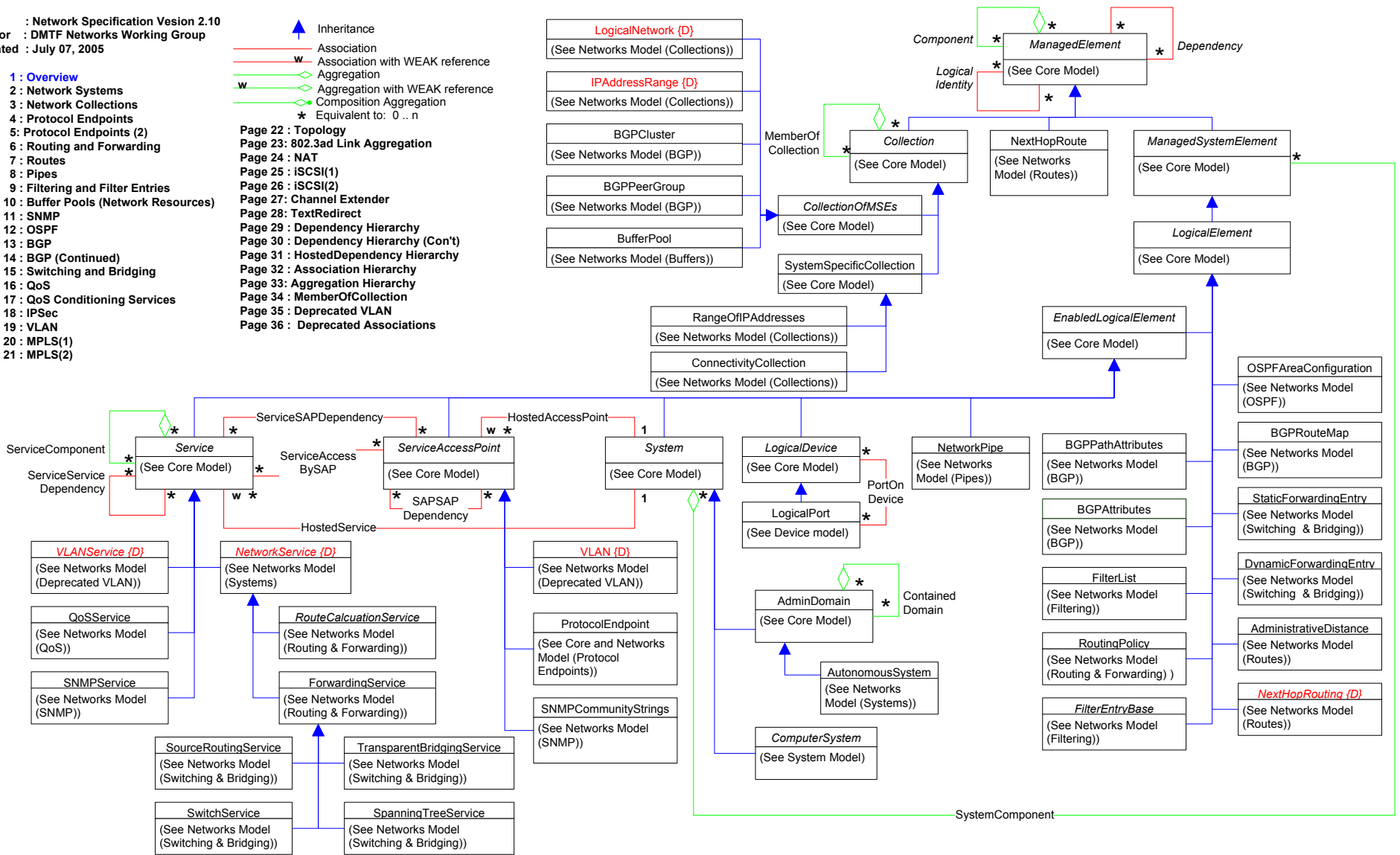
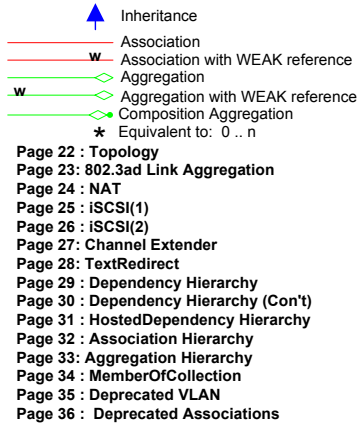







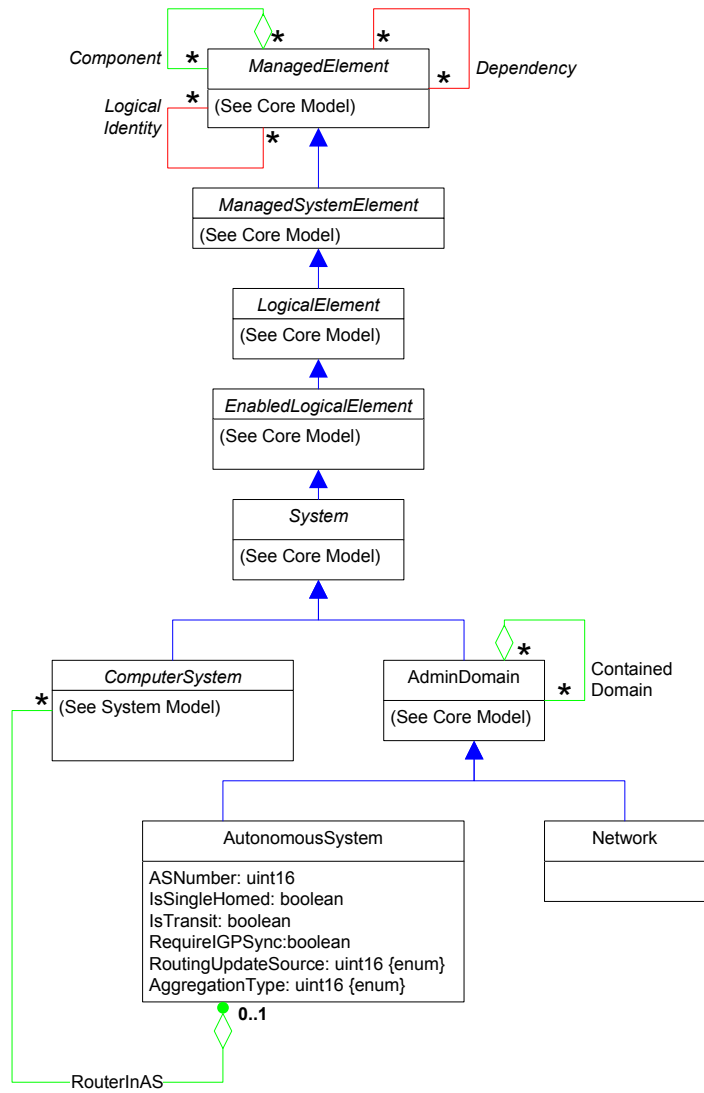


Page 1 : Overview
 Page 2 : Network Systems
 Page 3 : Network Collections
 Page 4 : Protocol Endpoints
 Page 5 : Protocol Endpoints (2)
 Page 6 : Routing and Forwarding
 Page 7 : Routes
 Page 8 : Pipes
 Page 9 : Filtering and Filter Entries
 Page 10 : Buffer Pools (Network Resources)
 Page 11 : SNMP
 Page 12 : OSPF
 Page 13 : BGP
 Page 14 : BGP (Continued)
 Page 15 : Switching and Bridging
 Page 16 : QoS
 Page 17 : QoS Conditioning Services
 Page 18 : IPSec
 Page 19 : VLAN
 Page 20 : MPLS(1)
 Page 21 : MPLS(2)



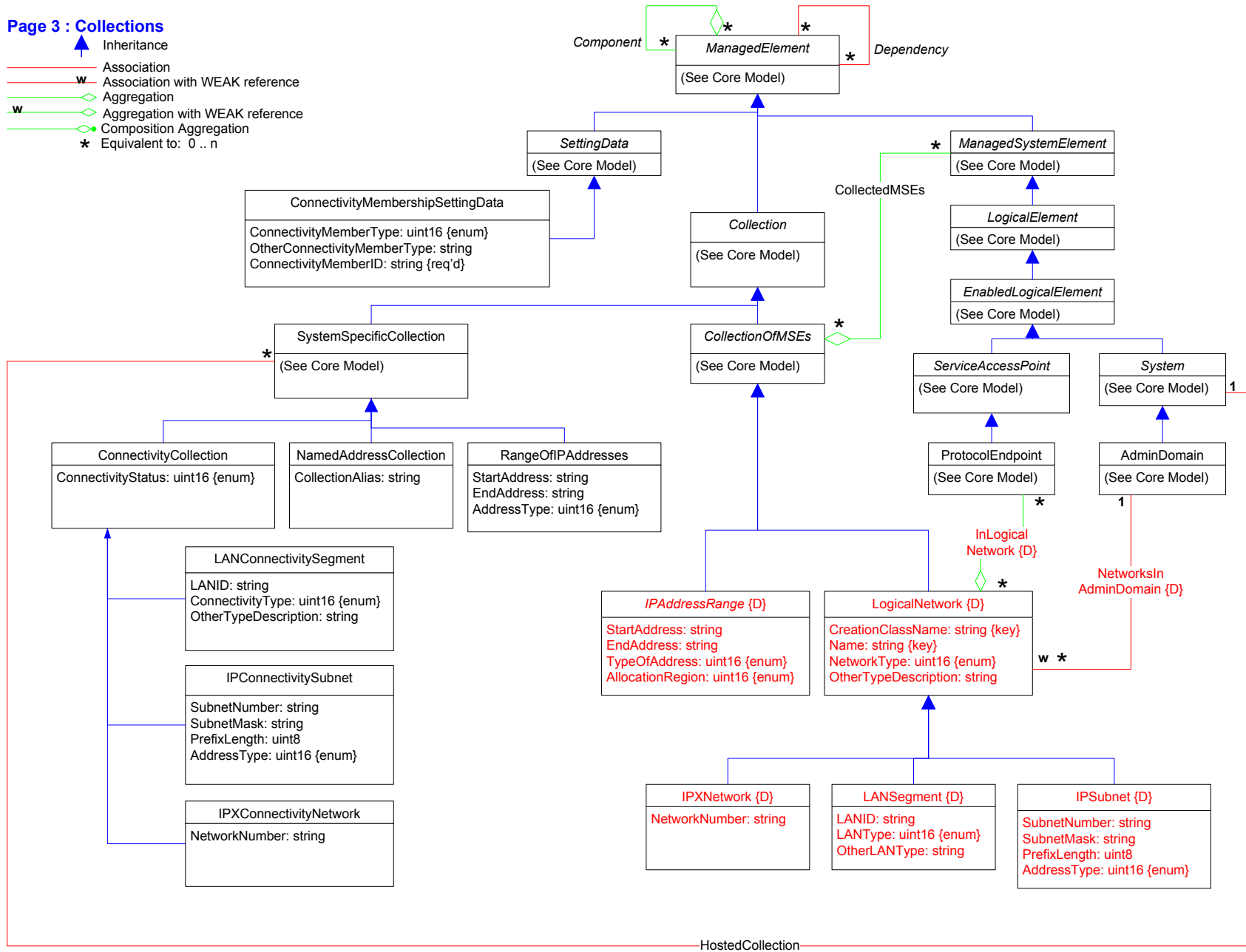
Page 2 : Network Systems

-  Inheritance
-  Association
-  Association with WEAK reference
-  Aggregation
-  Aggregation with WEAK reference
-  Composition Aggregation
-  Equivalent to: 0..n



Page 3 : Collections

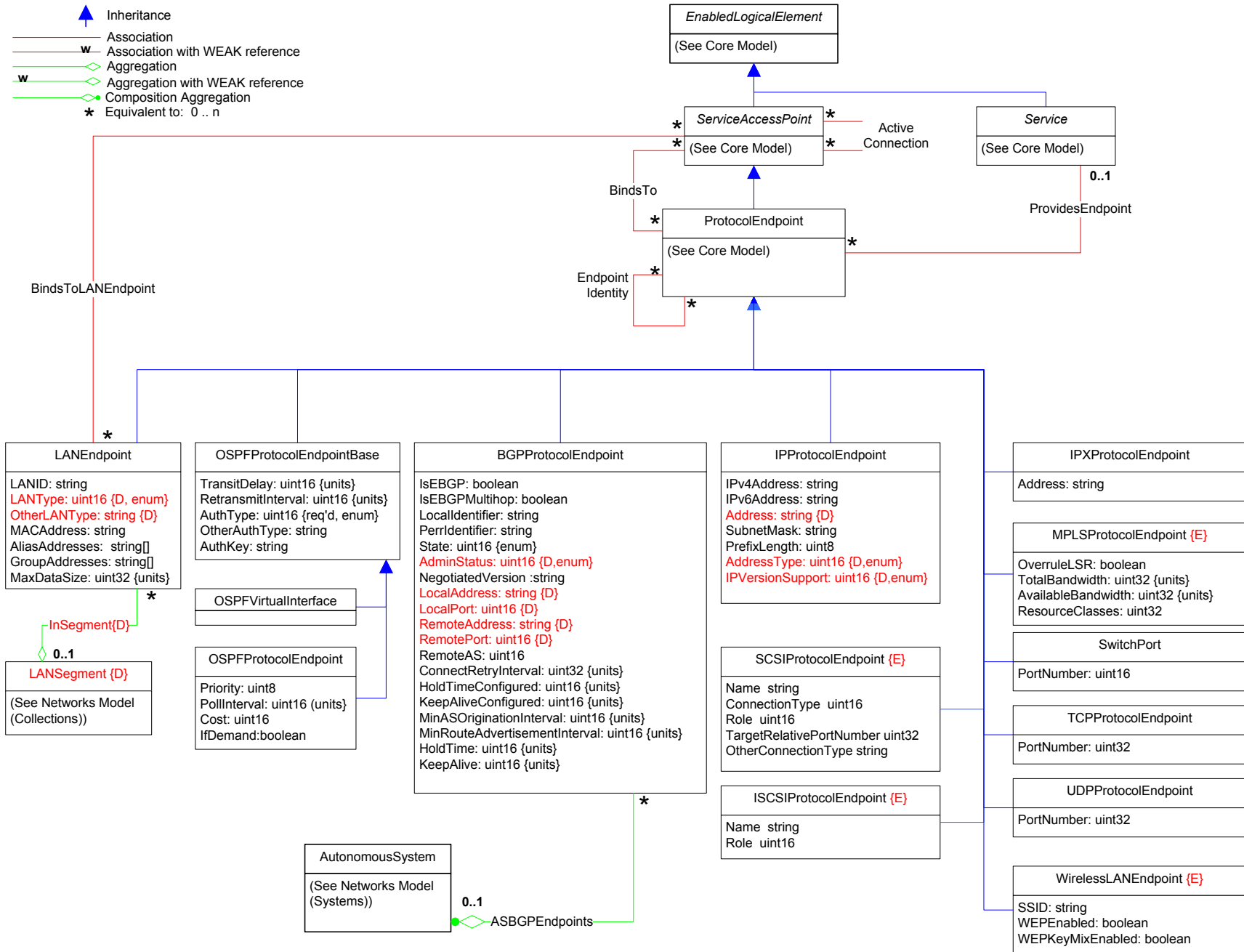
- Inheritance
- Association
- Association with WEAK reference
- Aggregation
- Aggregation with WEAK reference
- Composition Aggregation
- Equivalent to: 0..n



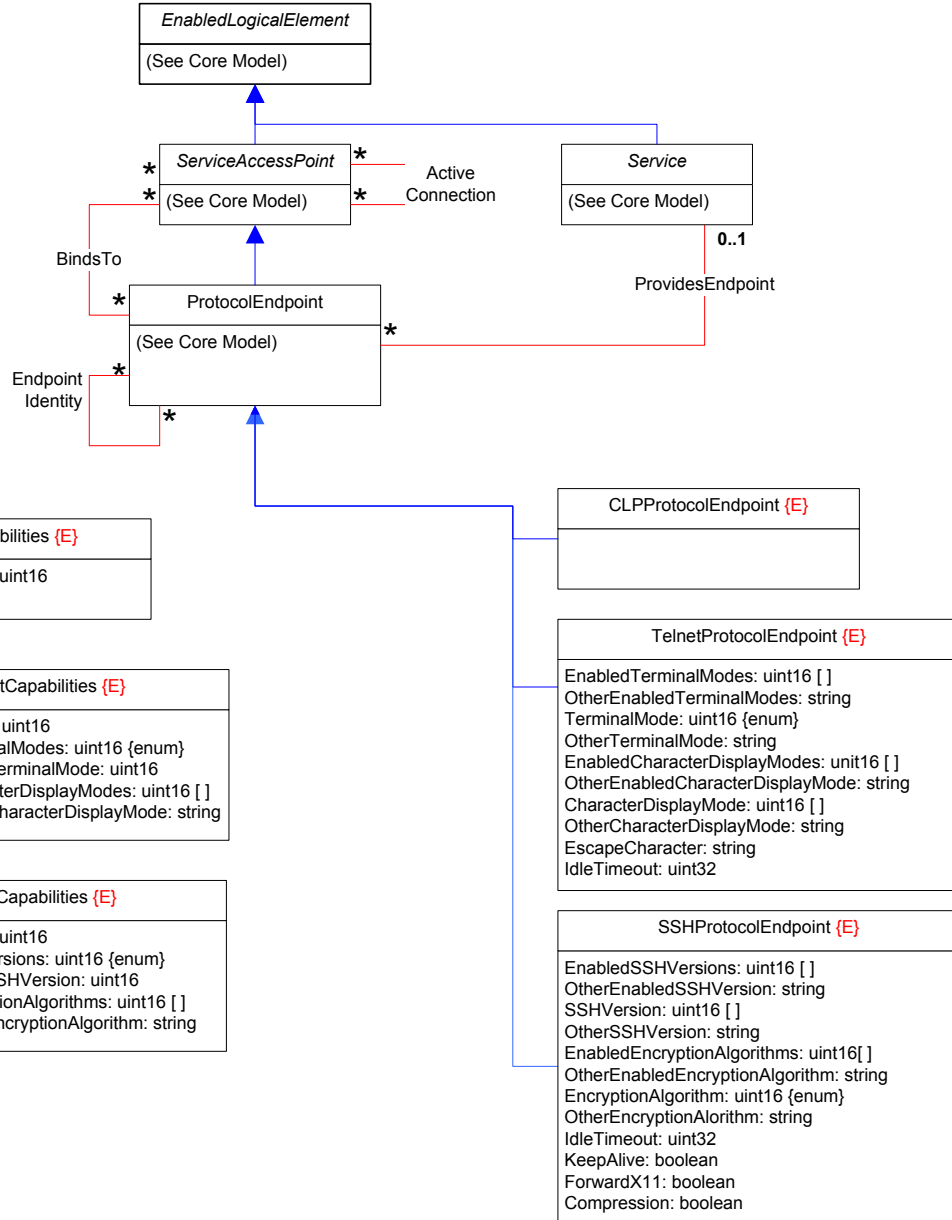
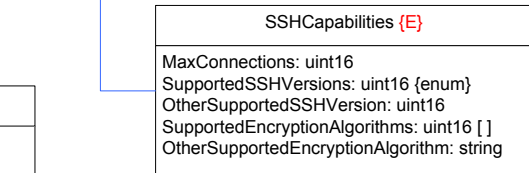
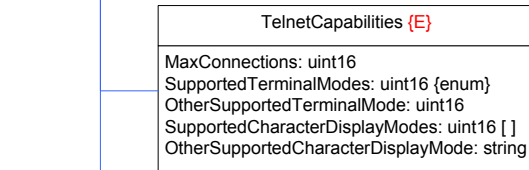
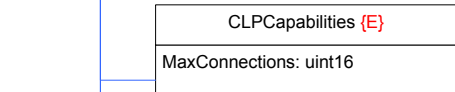
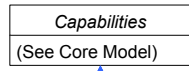
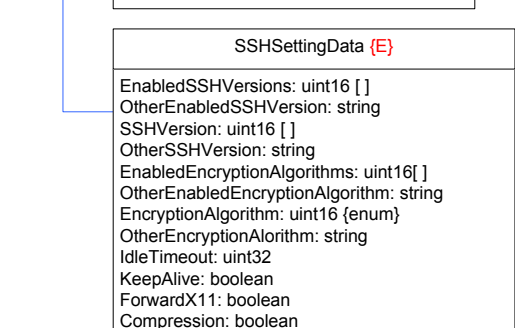
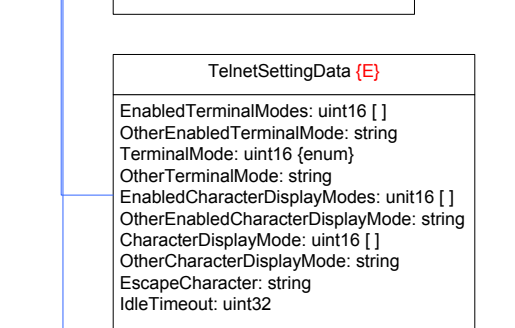
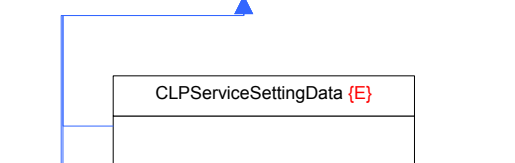
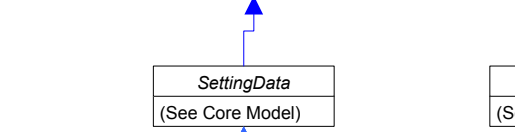
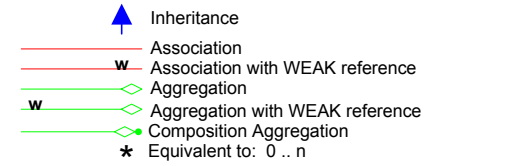
HostedCollection

Page 4 : Protocol Endpoints








- Inheritance
- Association
- Association with WEAK reference
- Aggregation
- Aggregation with WEAK reference
- Composition Aggregation
- Equivalent to: 0..n

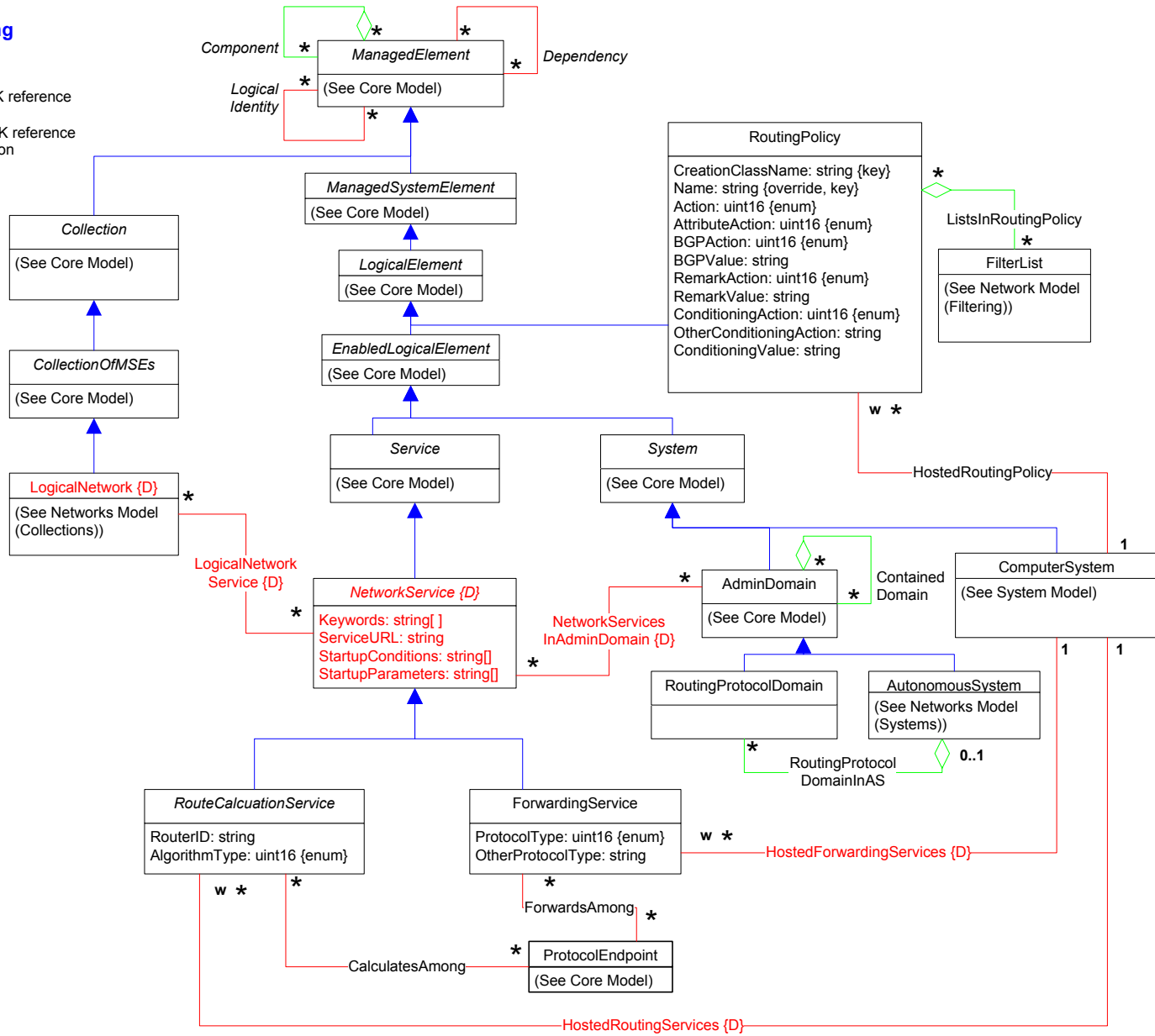


Page 5 : Protocol Endpoints (Con't)

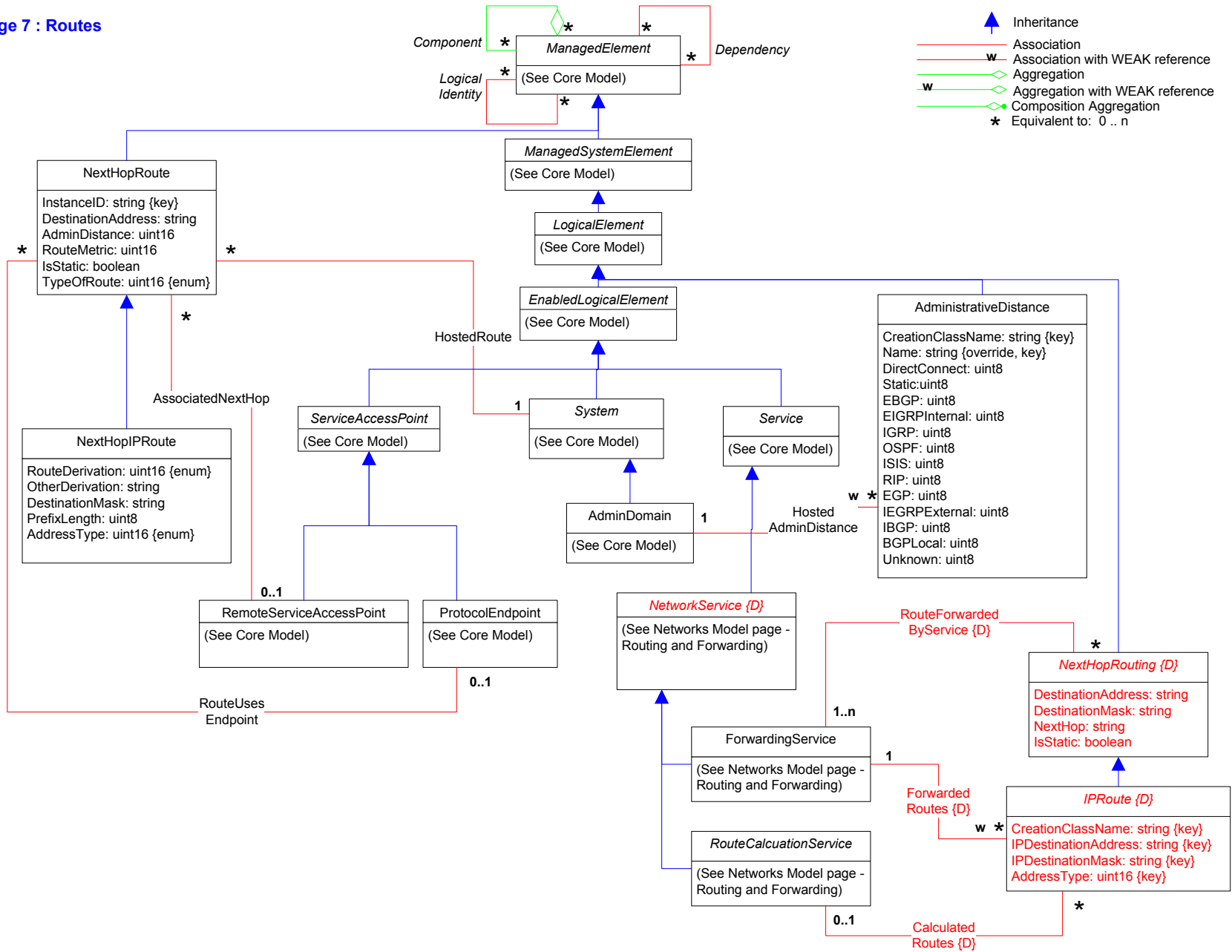


Page 6 : Routing & Forwarding








-  Inheritance
-  Association
-  Association with WEAK reference
-  Aggregation
-  Aggregation with WEAK reference
-  Composition Aggregation
-  Equivalent to: 0 .. n

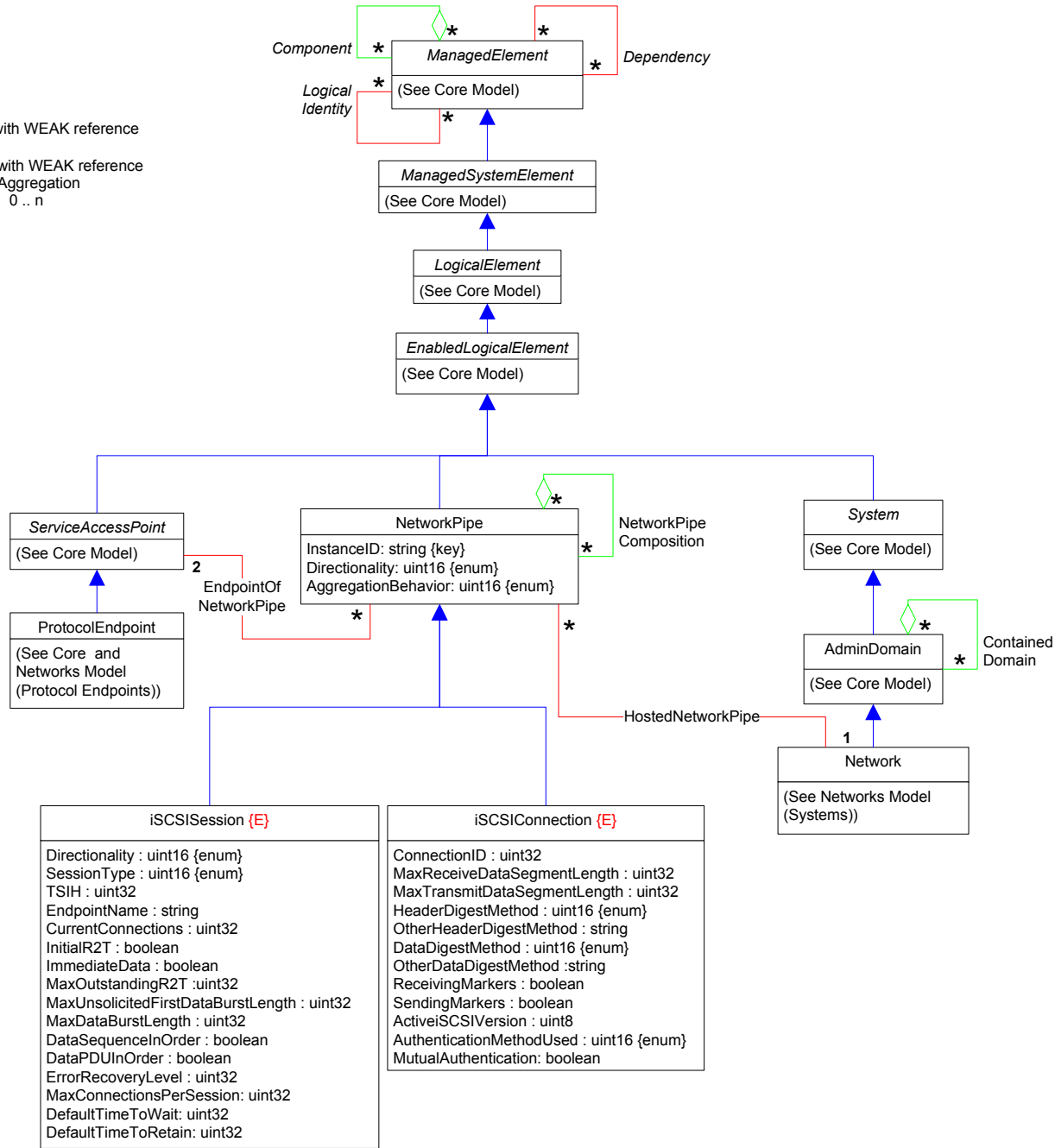


Page 7 : Routes




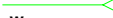





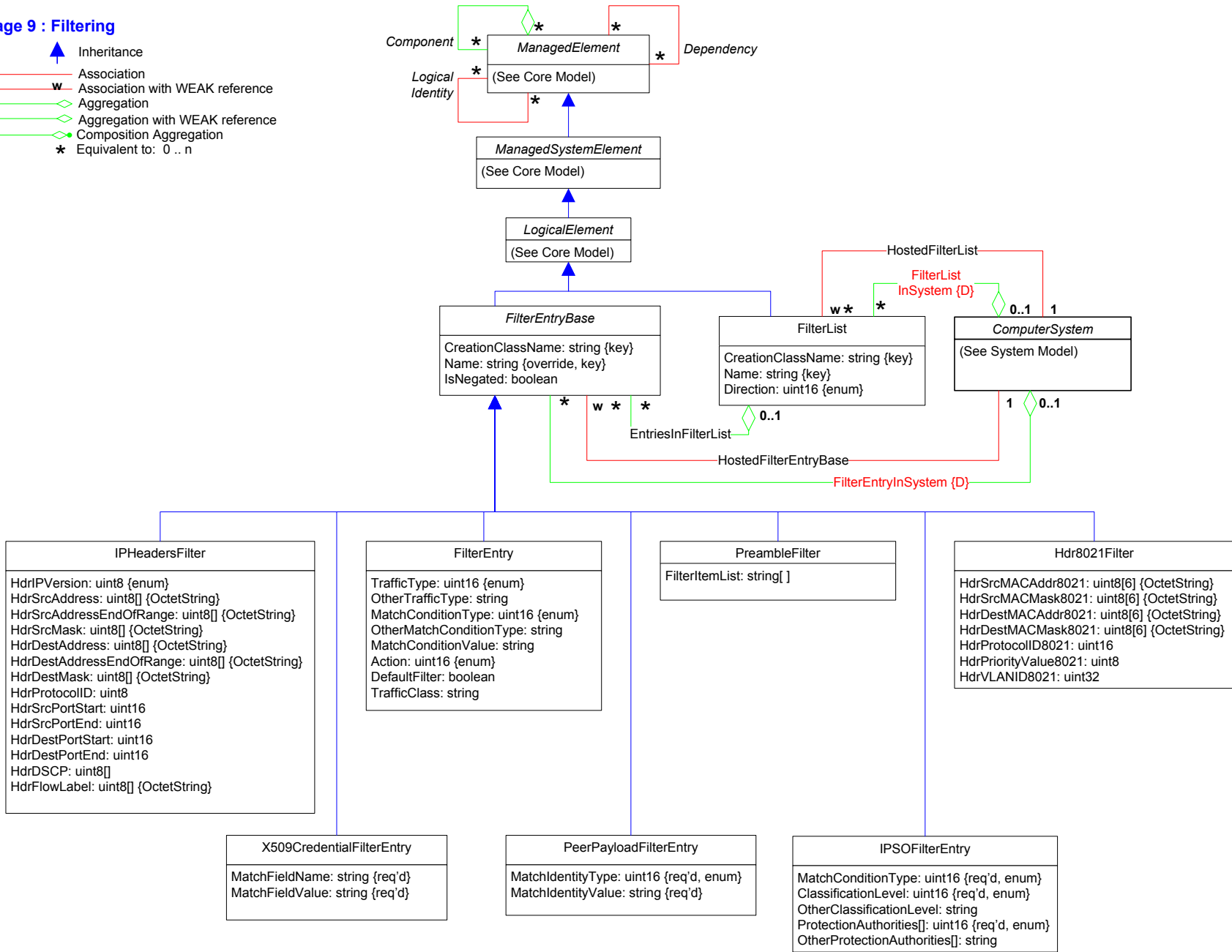
Page 8 : Pipes

-  Inheritance
-  Association
-  Association with WEAK reference
-  Aggregation
-  Aggregation with WEAK reference
-  Composition Aggregation
-  Equivalent to: 0..n










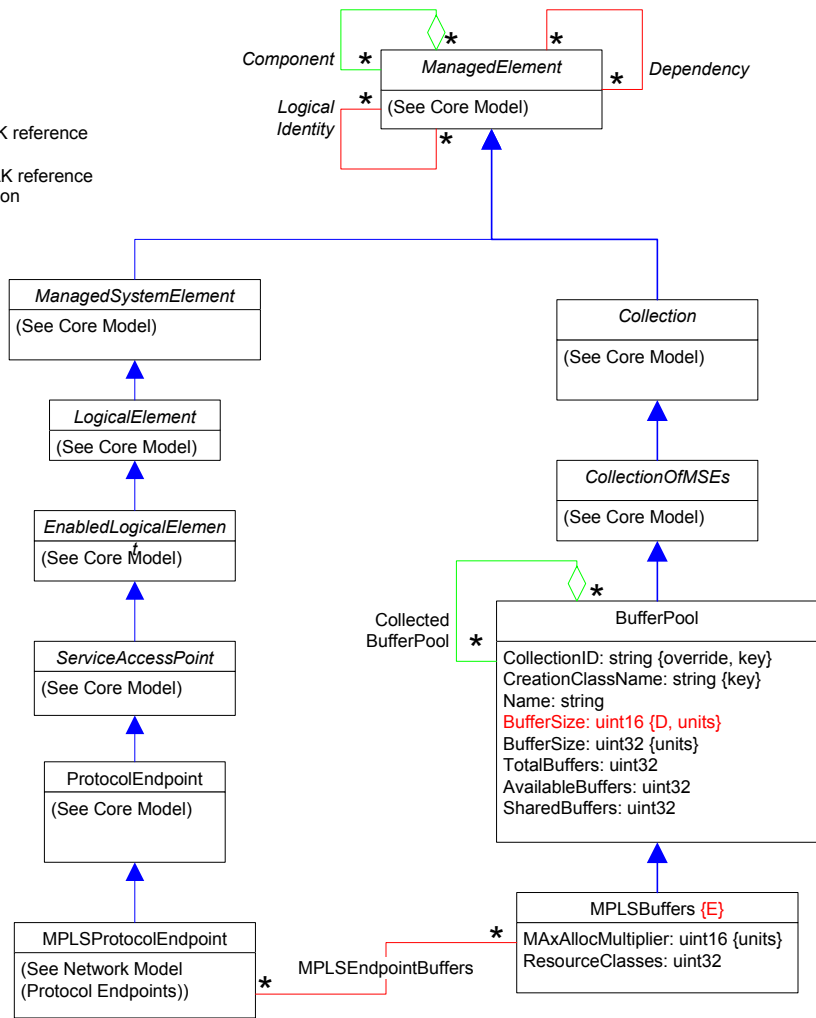
Page 9 : Filtering

-  Inheritance
-  Association
-  Association with WEAK reference
-  Aggregation
-  Aggregation with WEAK reference
-  Composition Aggregation
-  Equivalent to: 0 .. n










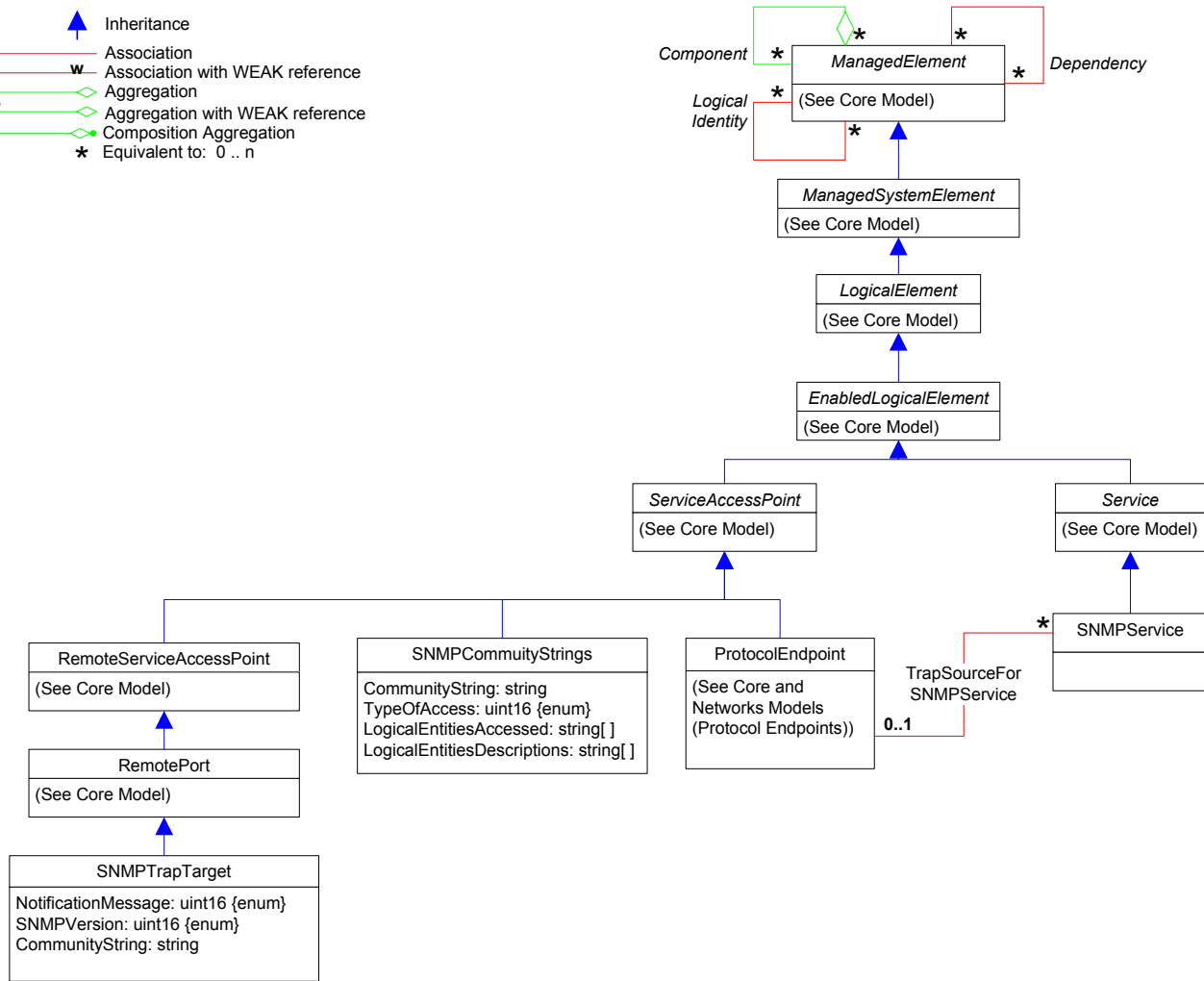
Page 10 : Buffers

-  Inheritance
-  Association
-  Association with WEAK reference
-  Aggregation
-  Aggregation with WEAK reference
-  Composition Aggregation
-  Equivalent to: 0 .. n



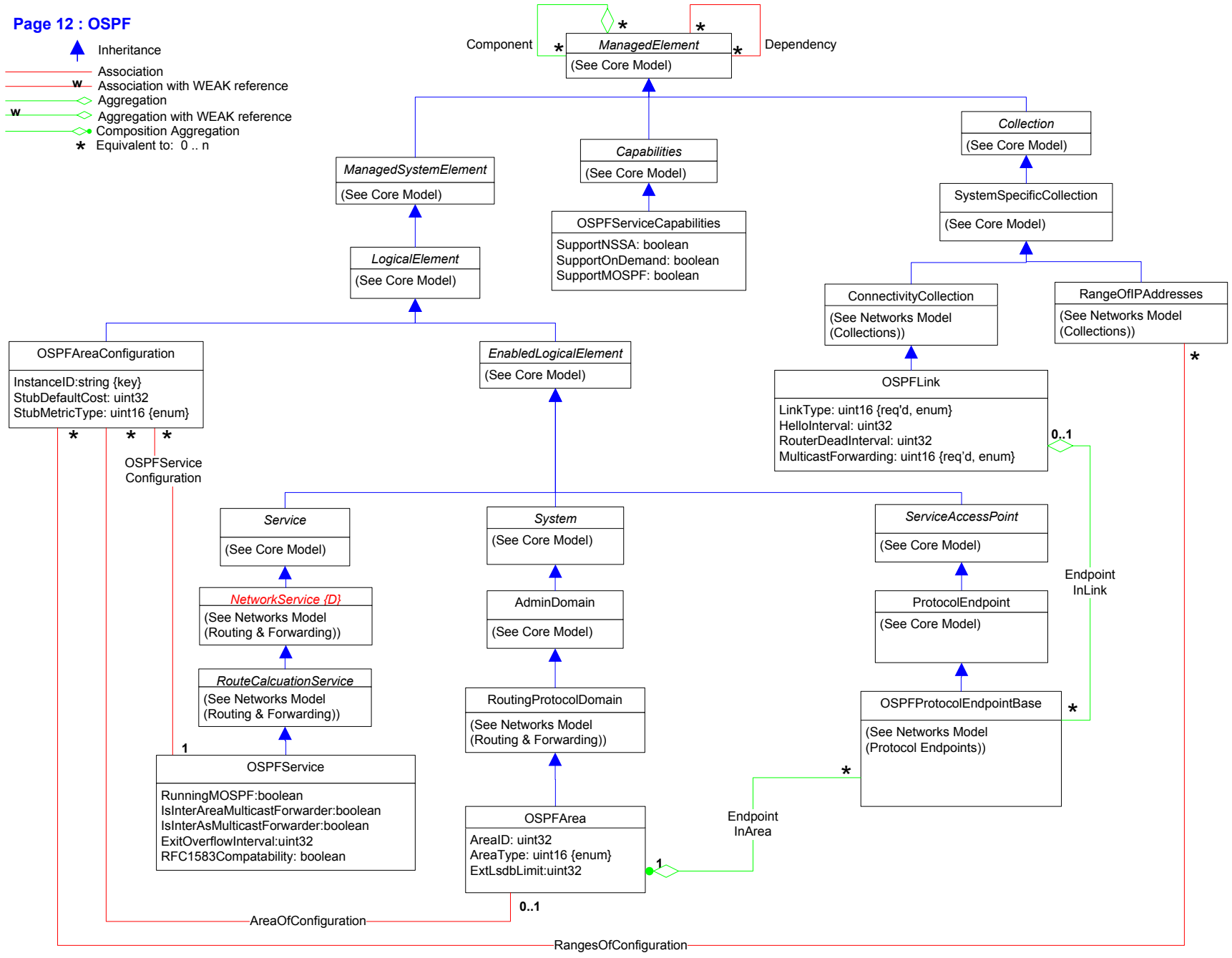
Page 11 : SNMP

-  Inheritance
-  Association
-  Association with WEAK reference
-  Aggregation
-  Aggregation with WEAK reference
-  Composition Aggregation
-  Equivalent to: 0 .. n



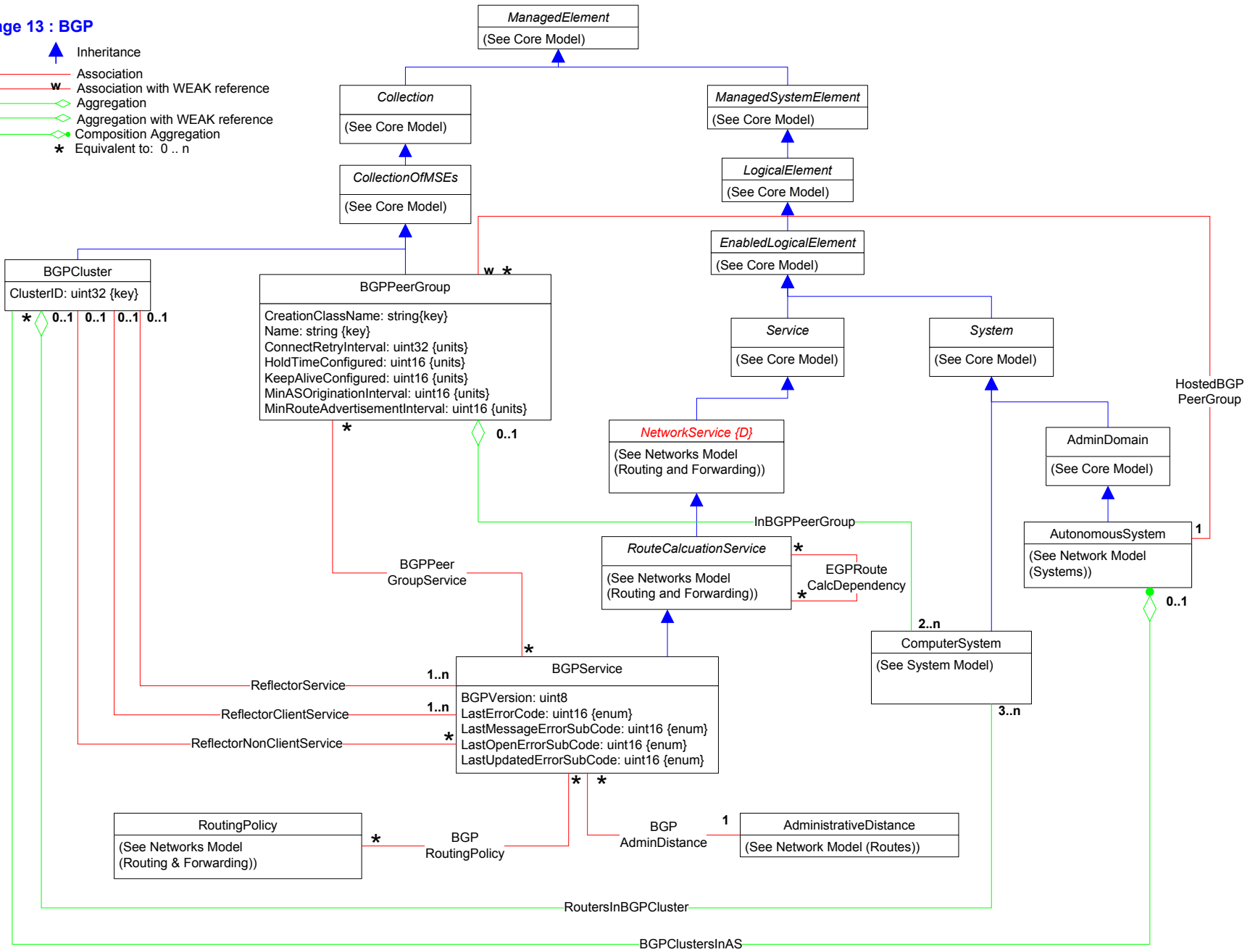
Page 12 : OSPF

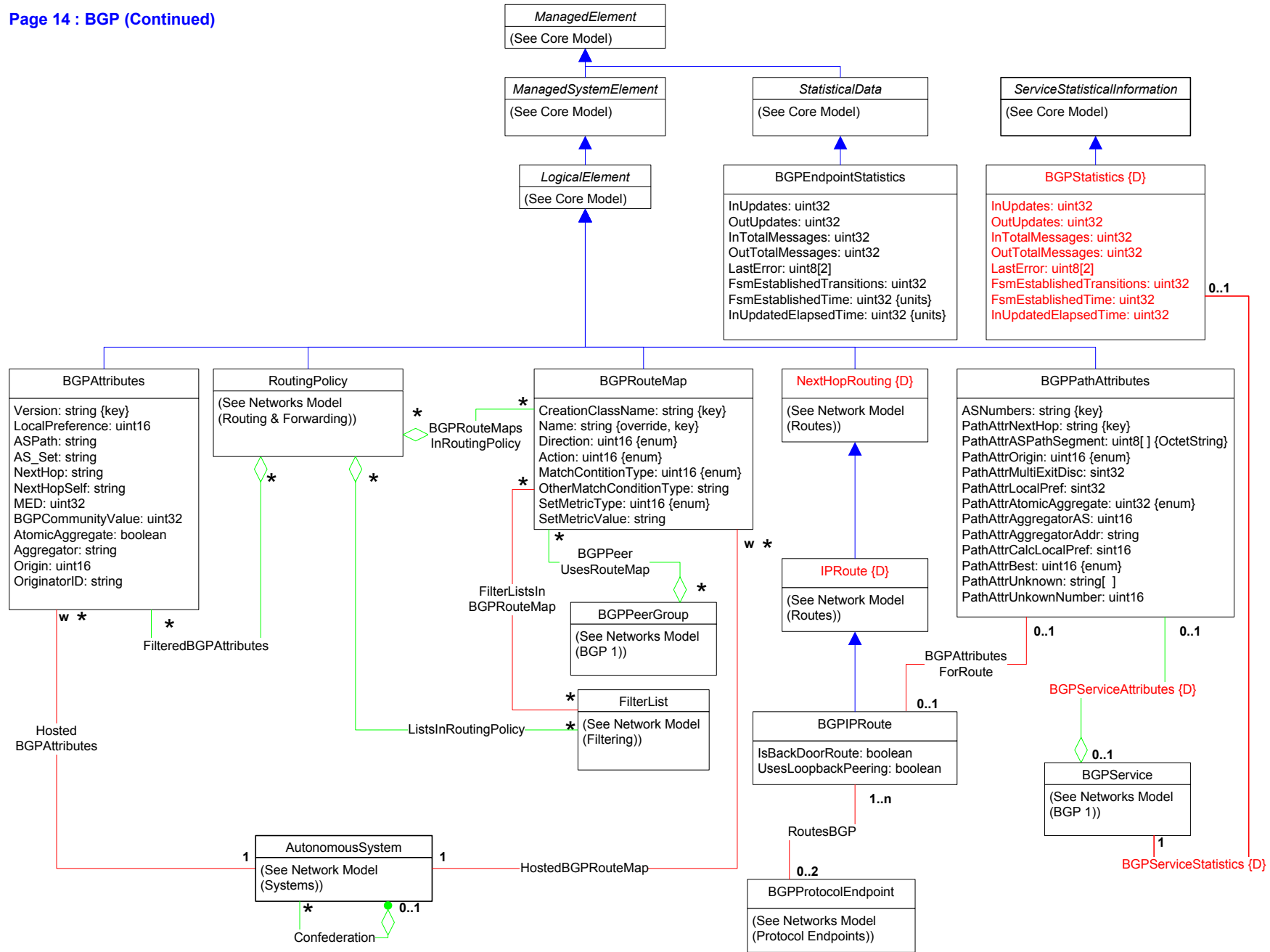
- Inheritance
- Association
- Association with WEAK reference
- Aggregation
- Aggregation with WEAK reference
- Composition Aggregation
- Equivalent to: 0..n

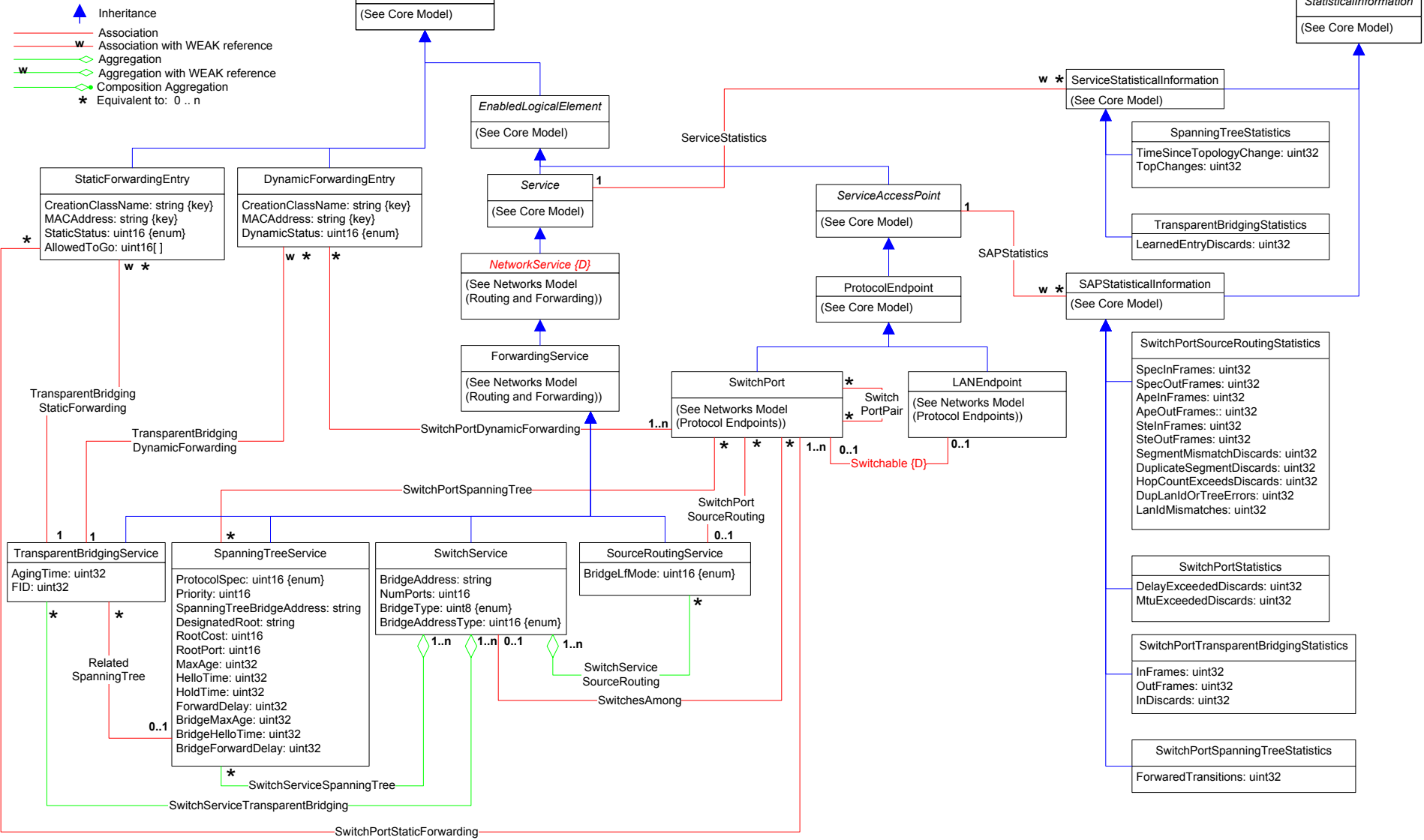


Page 13 : BGP








- ▲ Inheritance
- Association
- w Association with WEAK reference
- ◊ Aggregation
- w Aggregation with WEAK reference
- ◊ Composition Aggregation
- * Equivalent to: 0..n

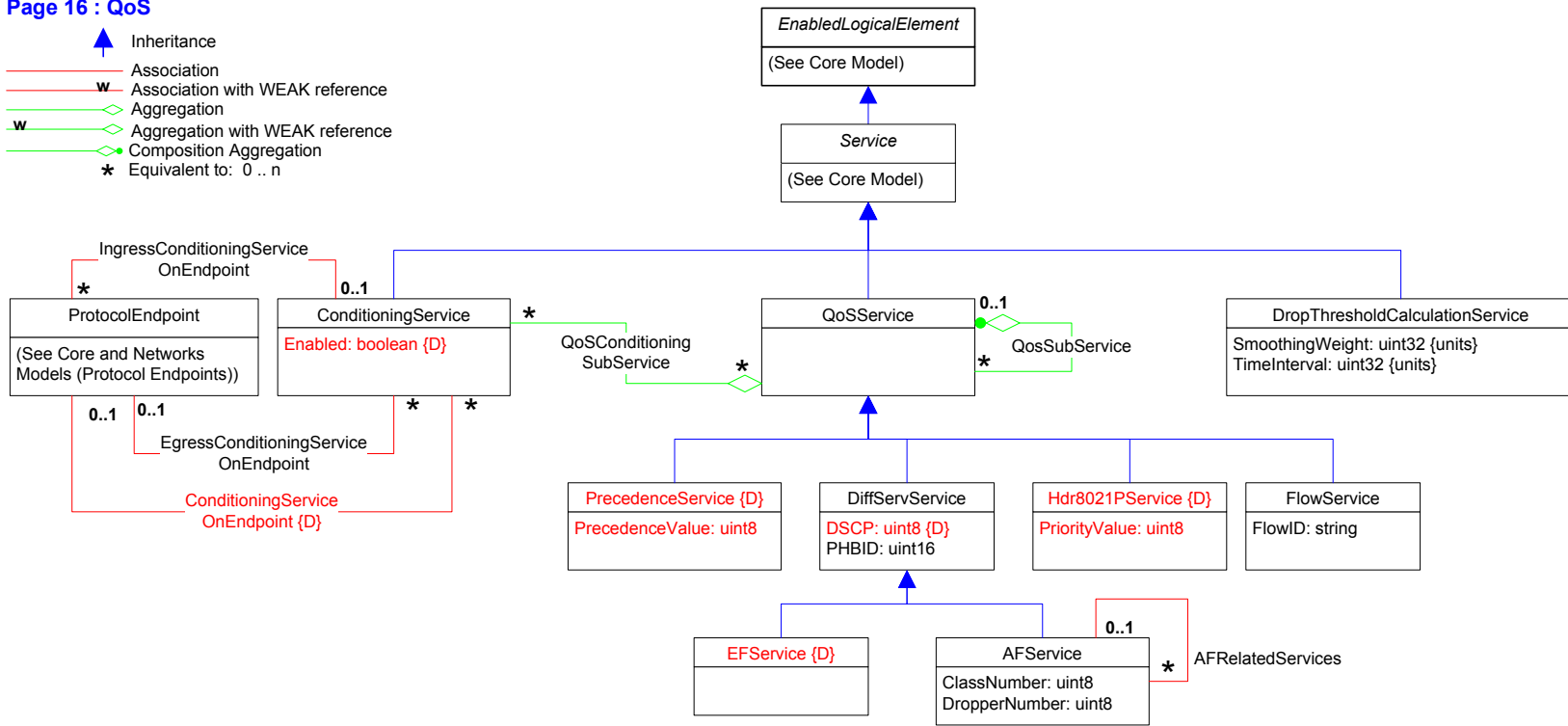




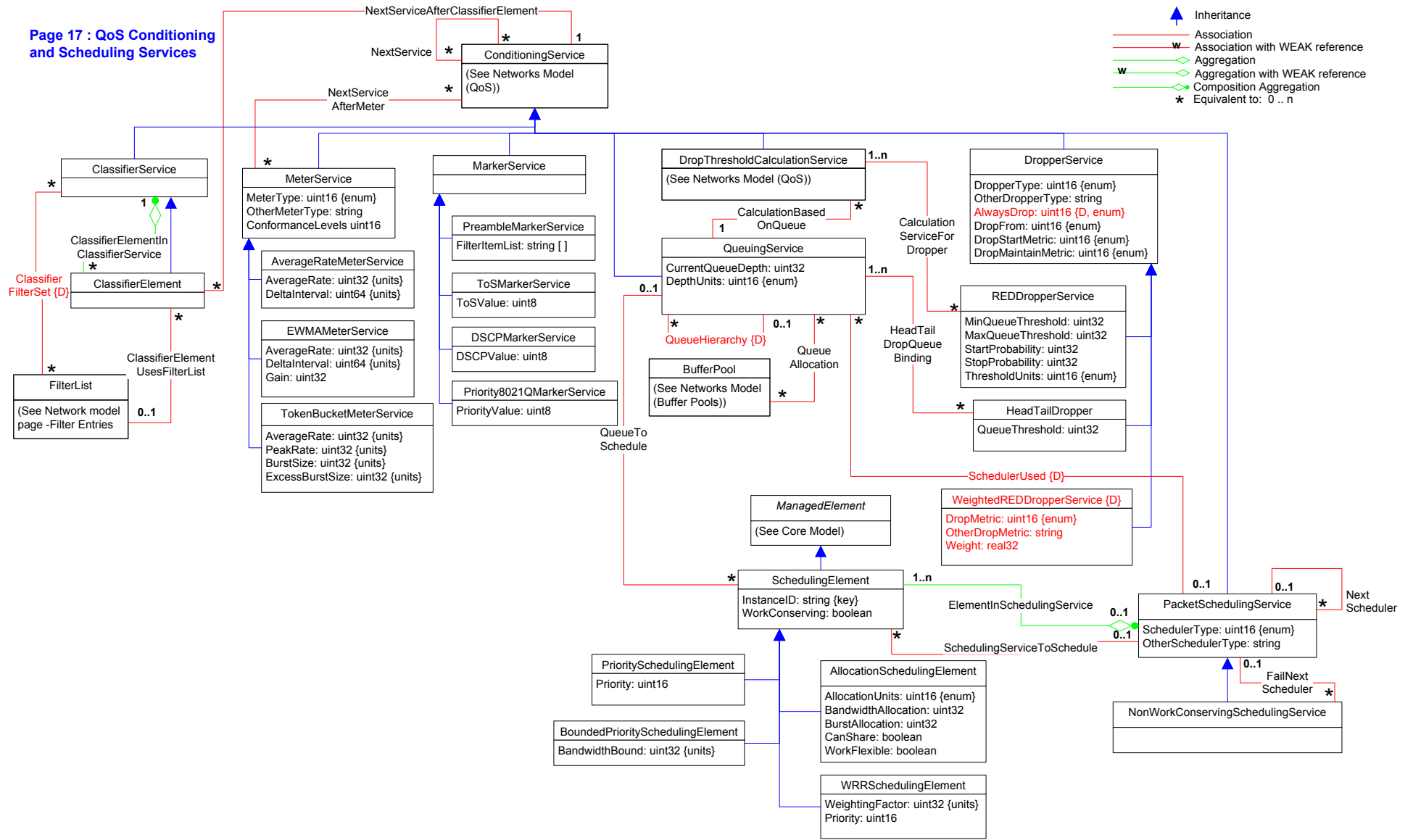


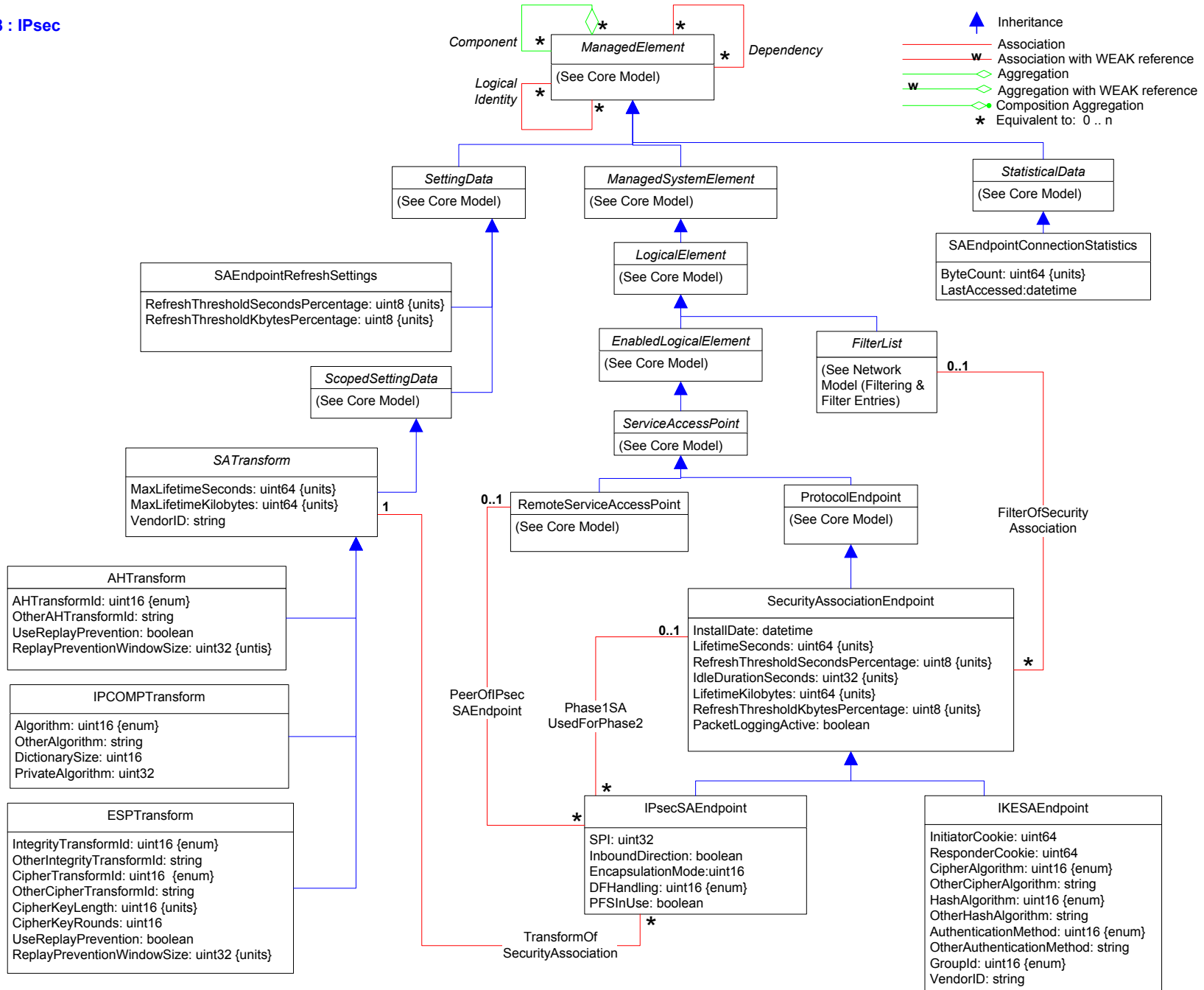
Page 16 : QoS

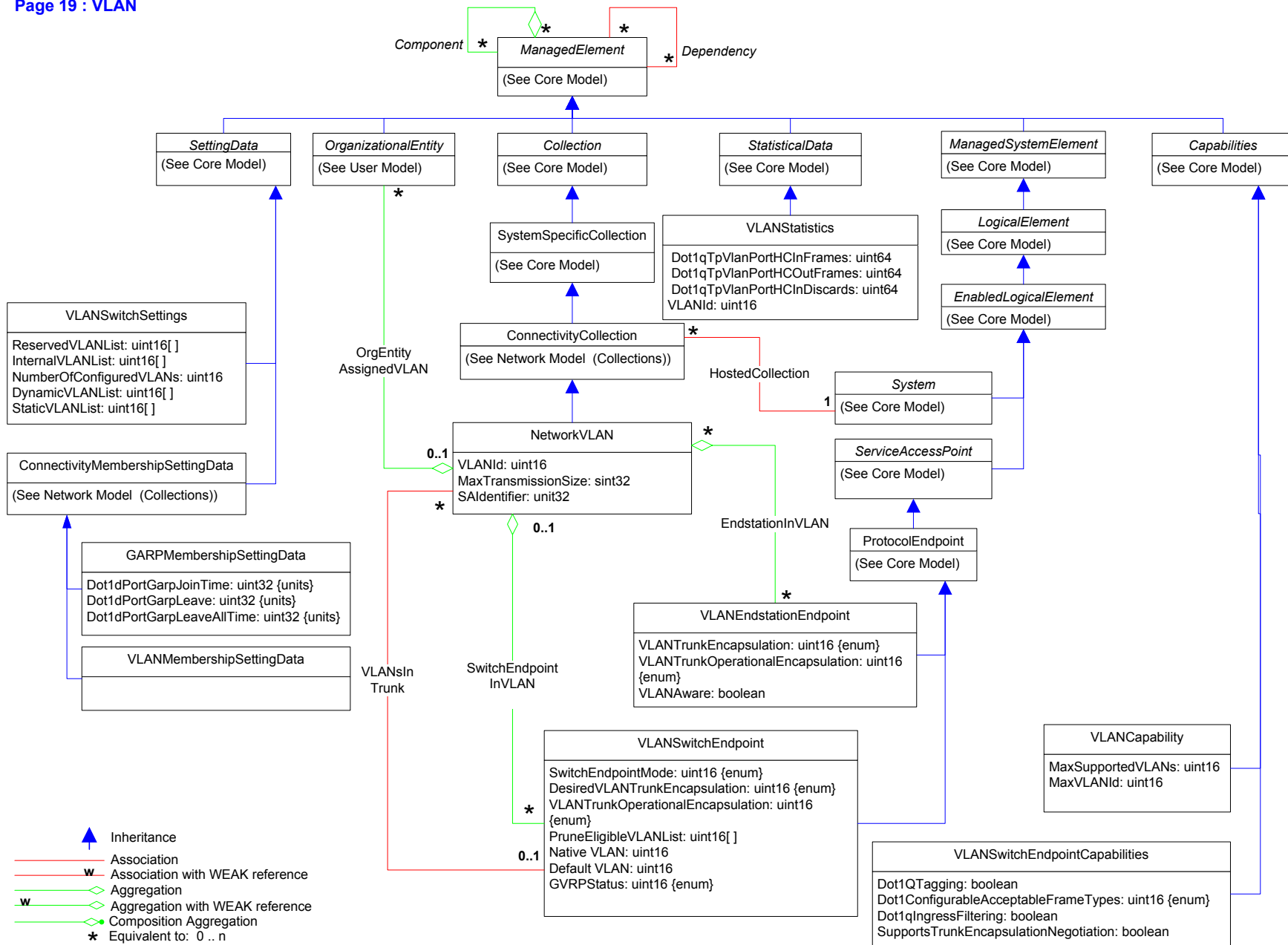
-  Inheritance
-  Association
-  Association with WEAK reference
-  Aggregation
-  Aggregation with WEAK reference
-  Composition Aggregation
-  Equivalent to: 0 .. n










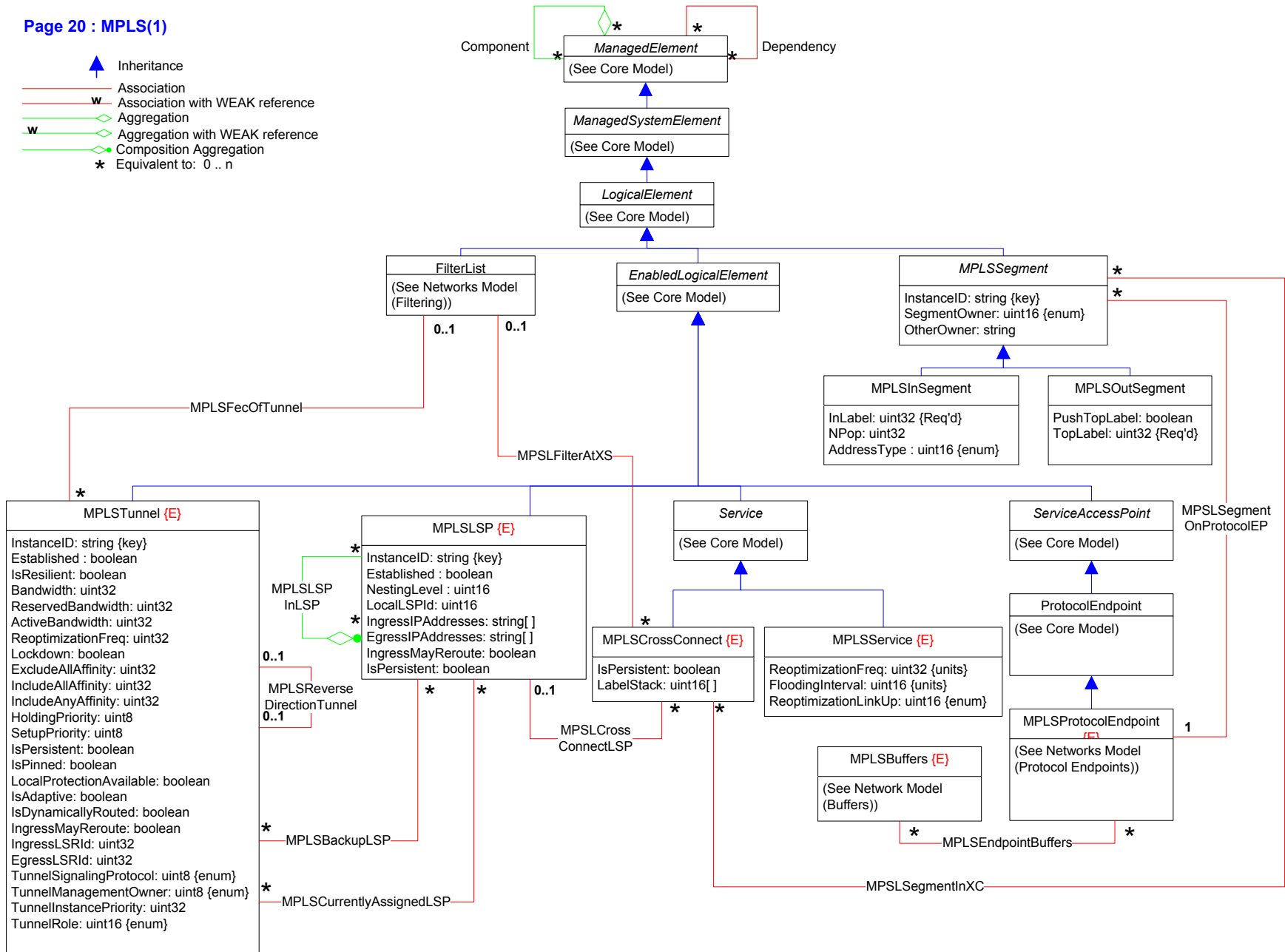
Page 17 : QoS Conditioning and Scheduling Services












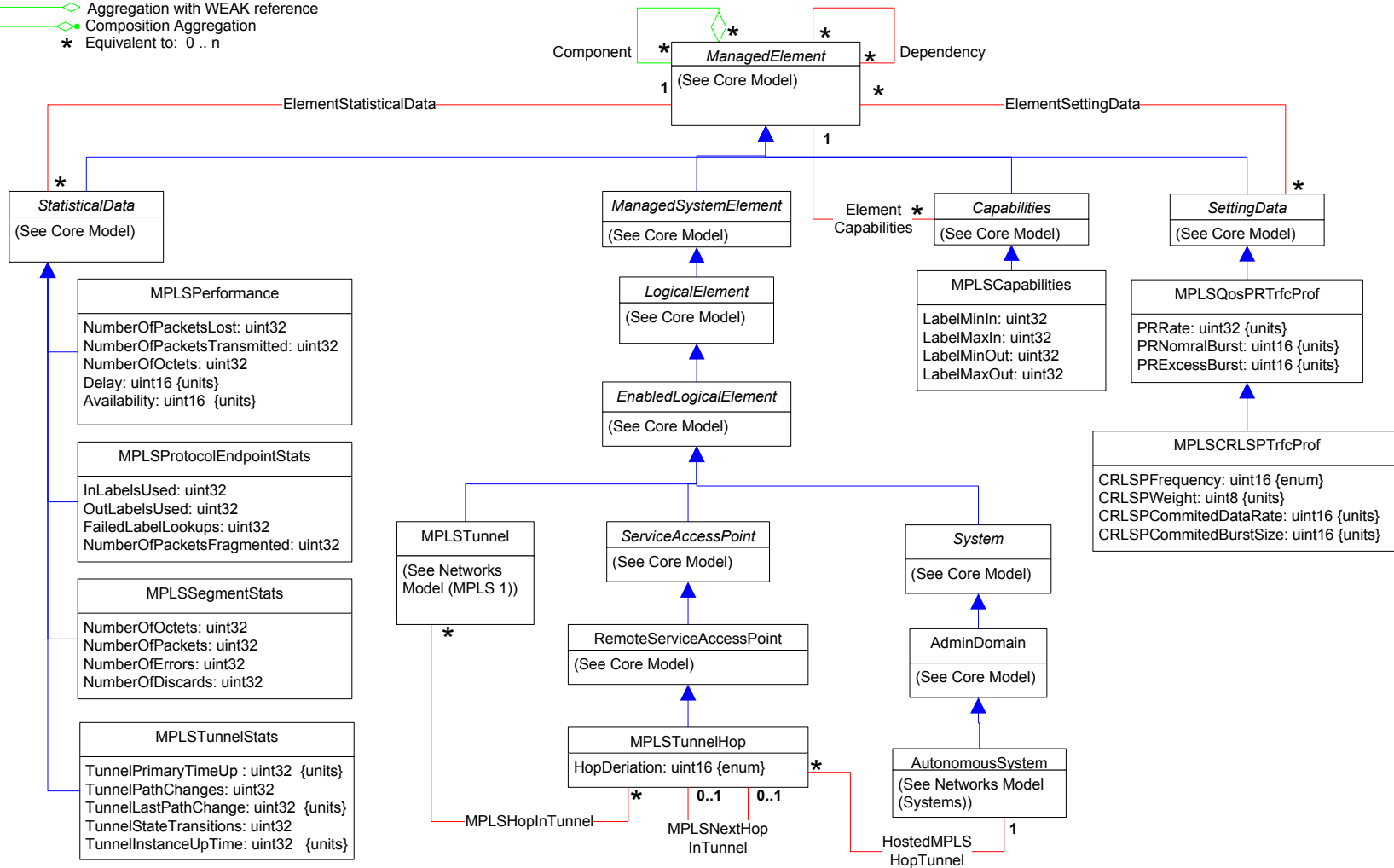


-  Inheritance
-  Association
-  Association with WEAK reference
-  Aggregation
-  Aggregation with WEAK reference
-  Composition Aggregation
-  Equivalent to: 0..n



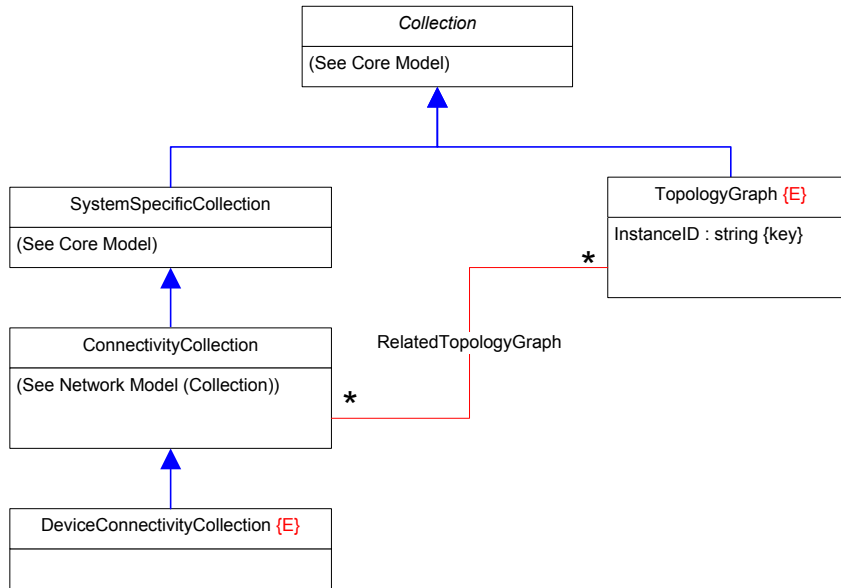
Page 21 : MPLS (2)
Routes, Statistics, Settings, & Capabilities

-  Inheritance
-  Association
-  Association with WEAK reference
-  Aggregation
-  Aggregation with WEAK reference
-  Composition Aggregation
-  Equivalent to: 0..n

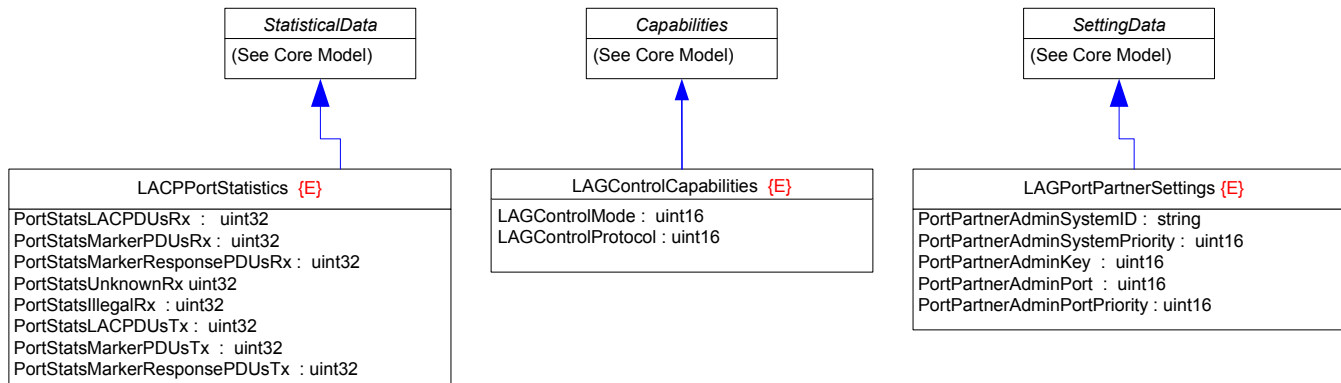
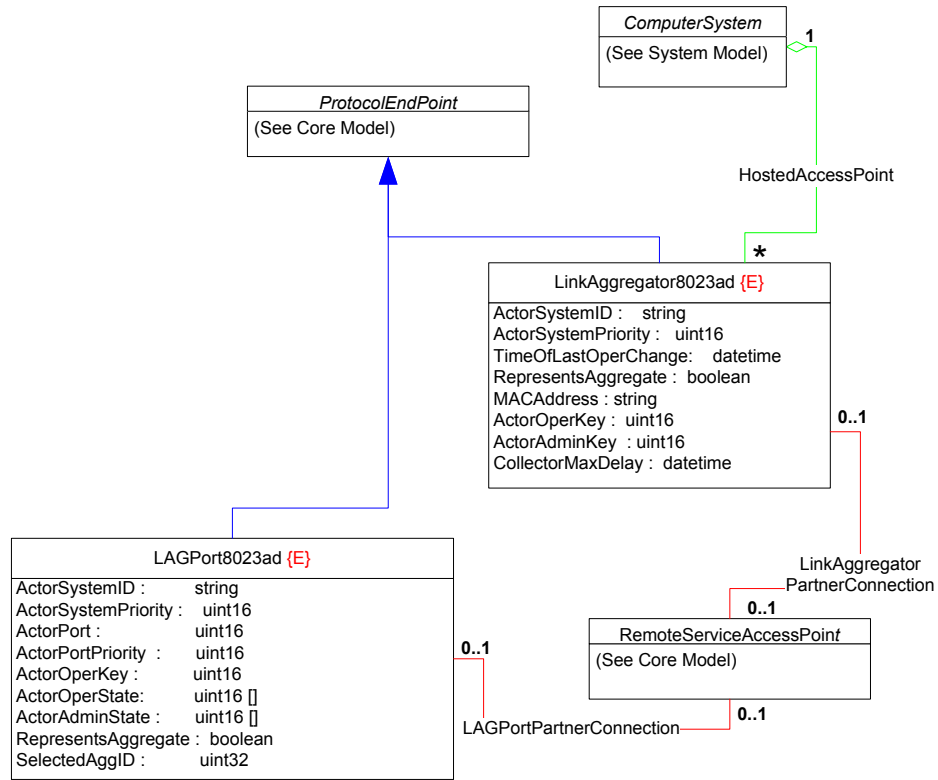
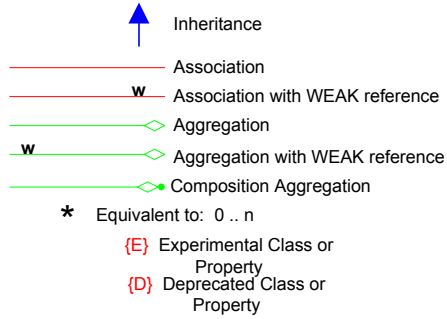


Page 22 : Topology

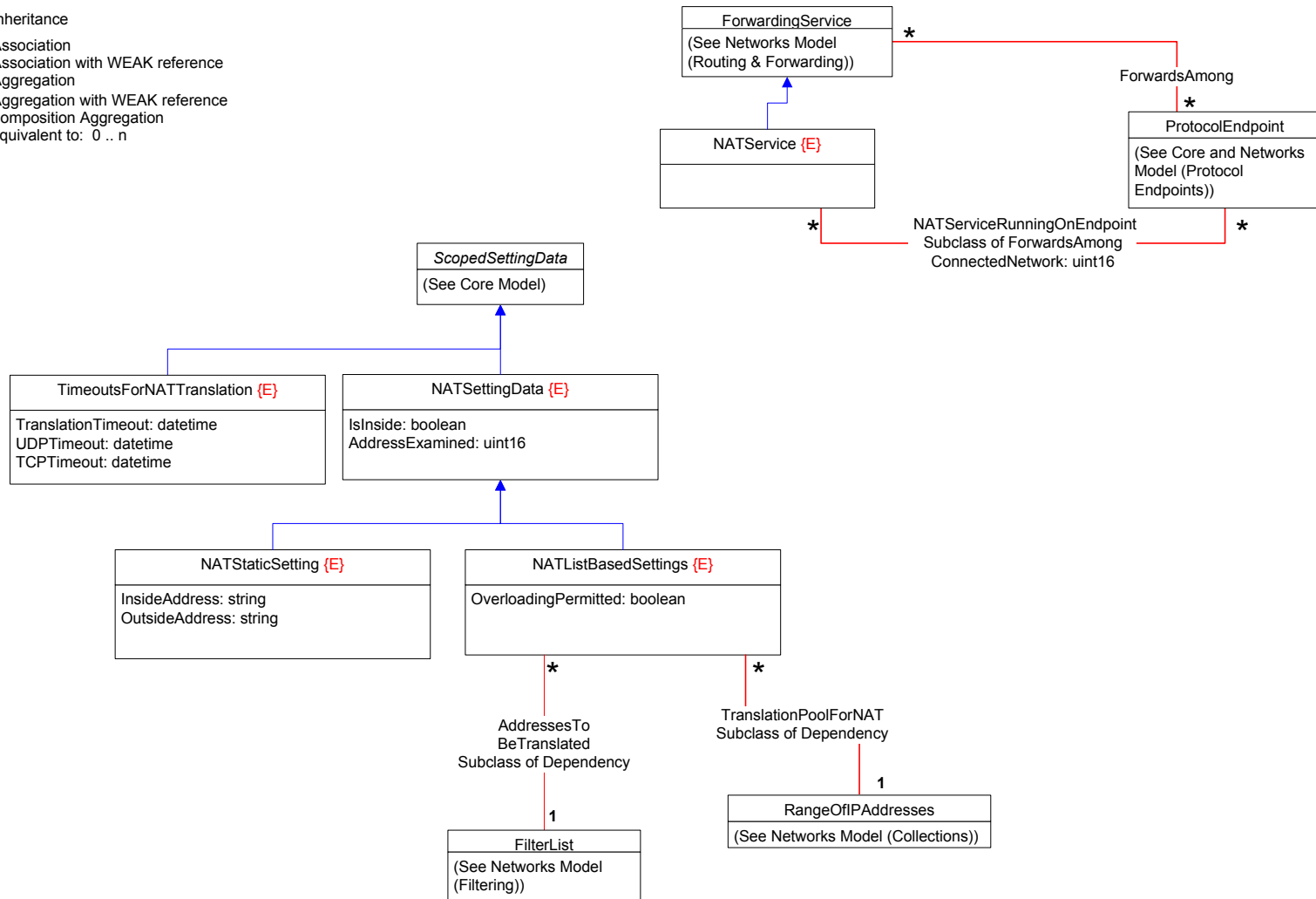
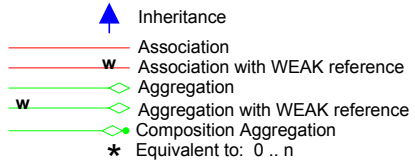
- ▲ Inheritance
- Association
- w Association with WEAK reference
- ◇ Aggregation
- w ◇ Aggregation with WEAK reference
- ◇ Composition Aggregation
- * Equivalent to: 0 .. n










Page 23 : Link Aggregation (802.3ad)

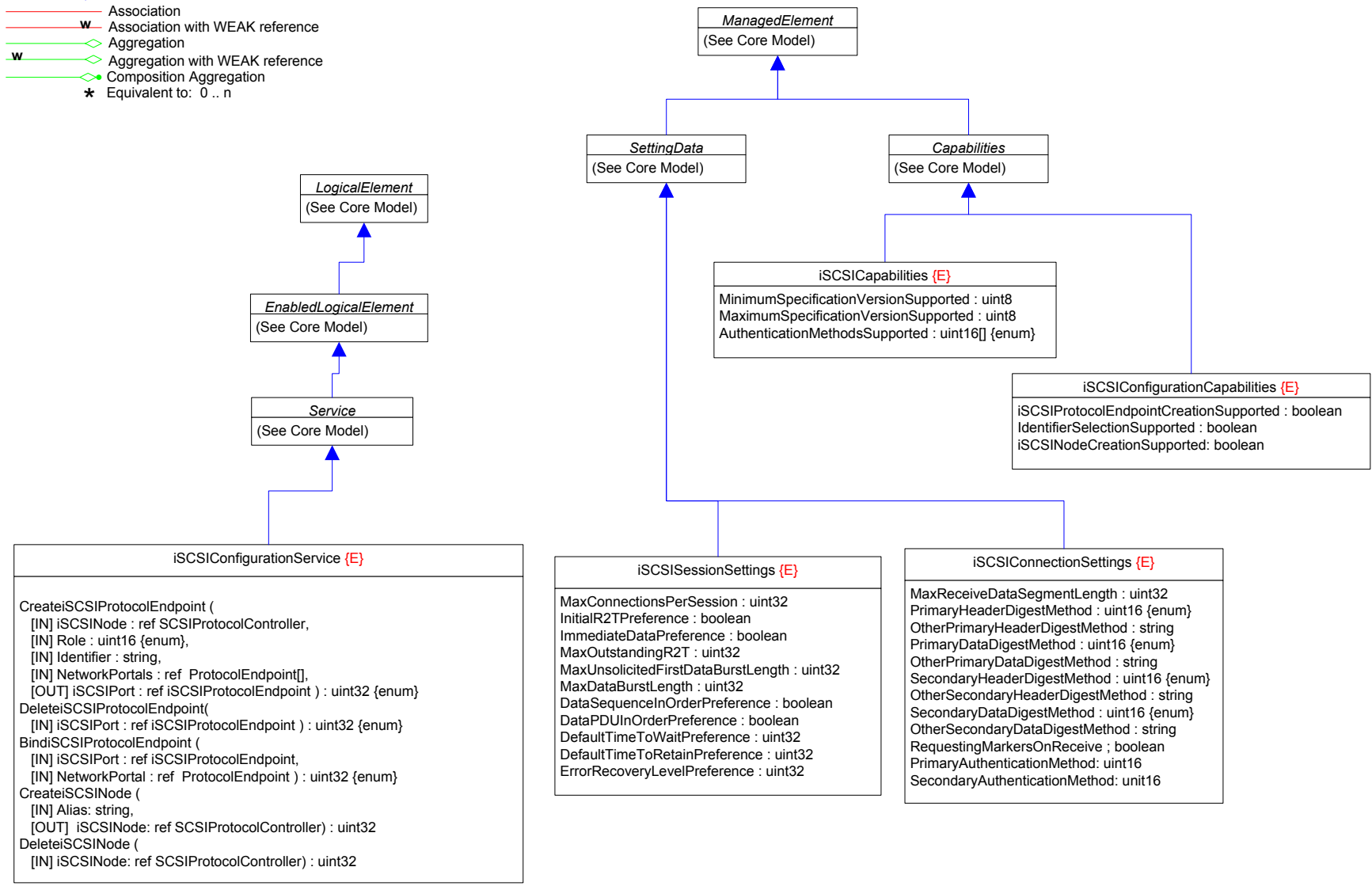


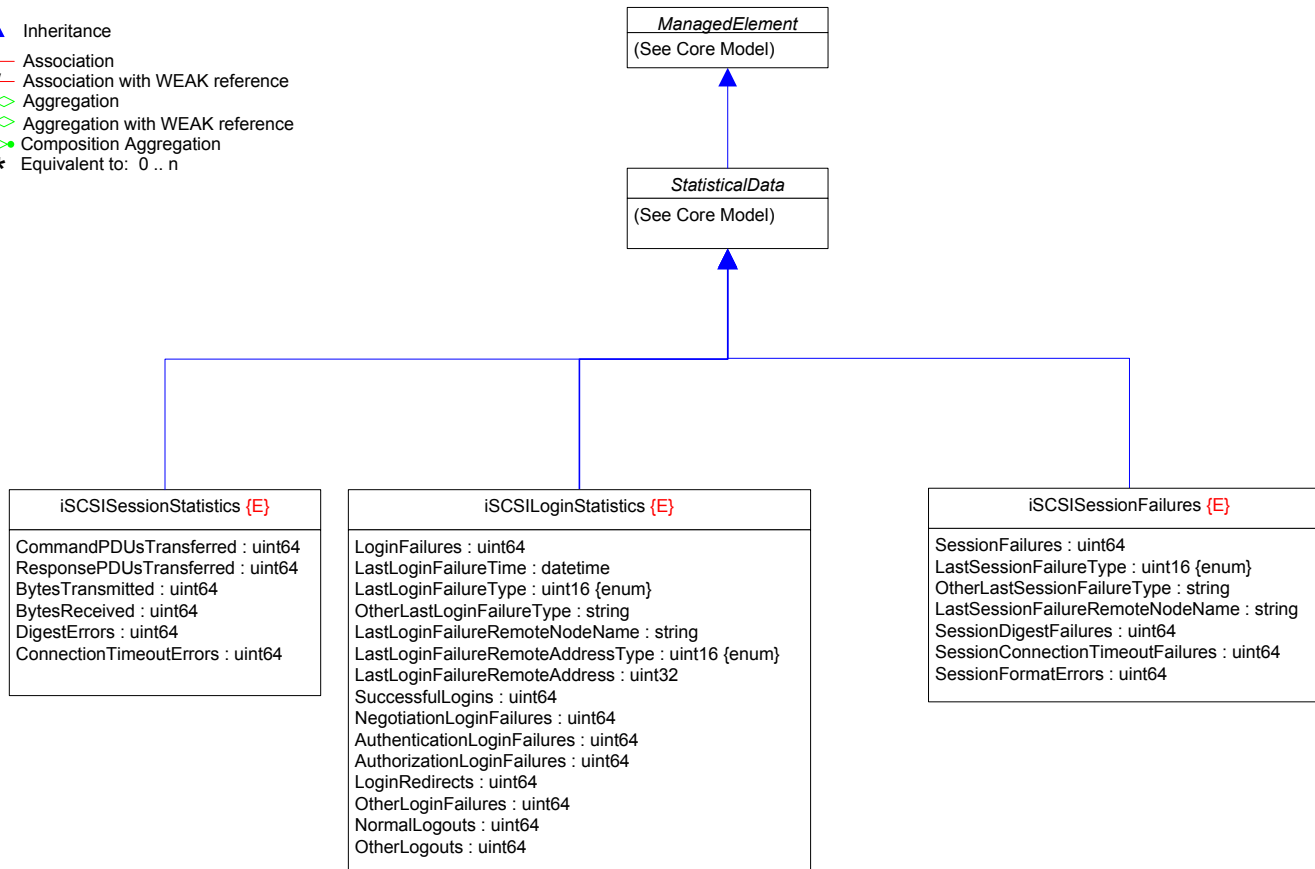
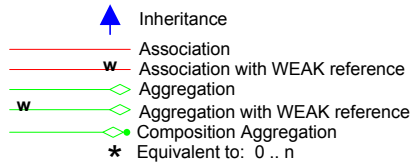
Page 24 : Network Address Translation (NAT)










Page 25 : iSCSI (1)

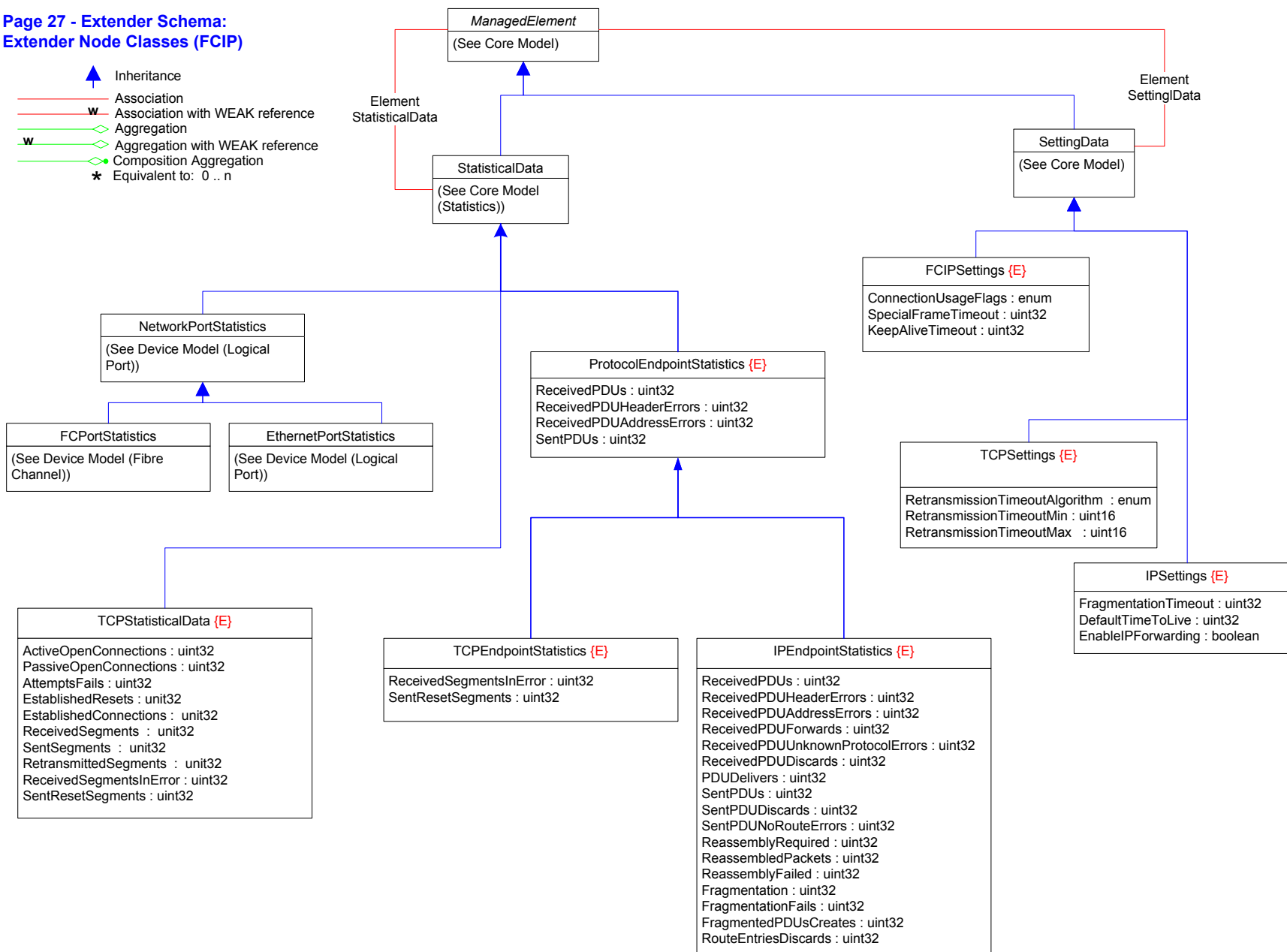
-  Inheritance
-  Association
-  Association with WEAK reference
-  Aggregation
-  Aggregation with WEAK reference
-  Composition Aggregation
-  Equivalent to: 0..n












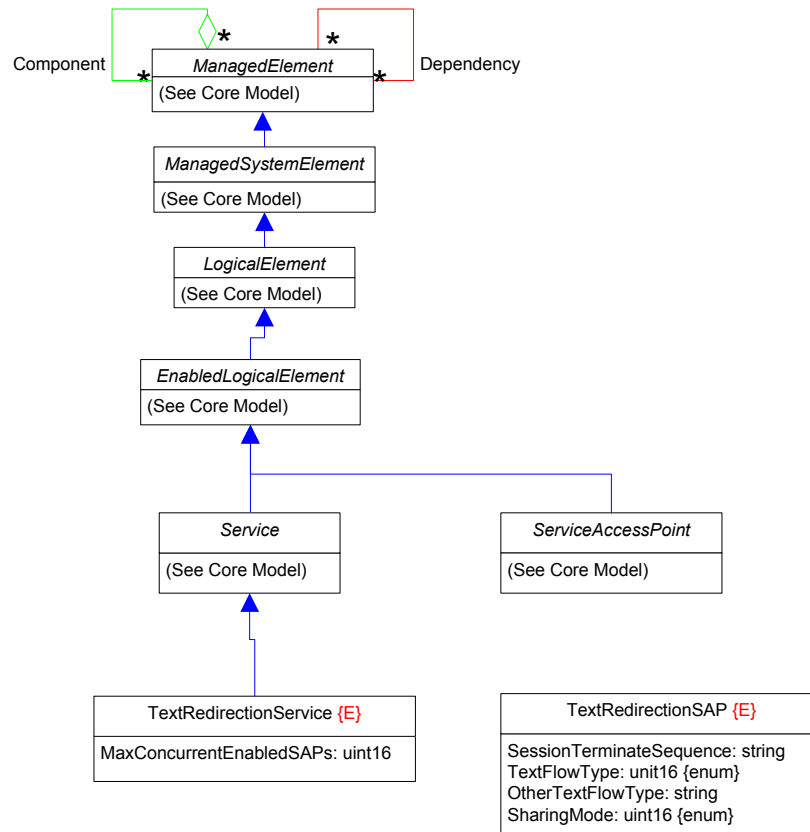
**Page 27 - Extender Schema:
Extender Node Classes (FCIP)**

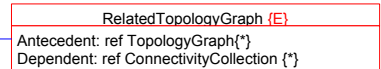
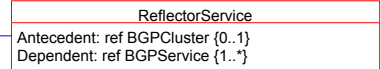
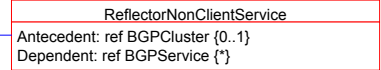
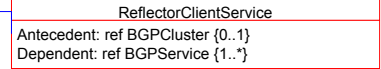
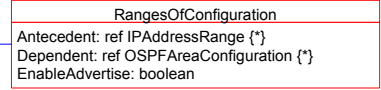
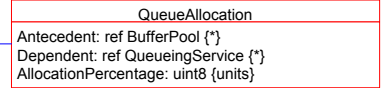
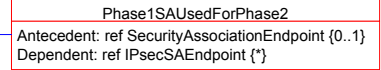
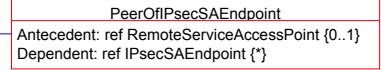
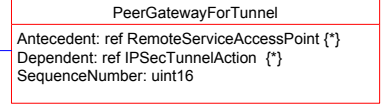
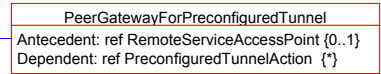
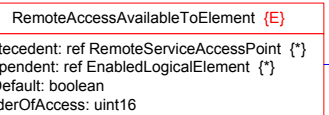
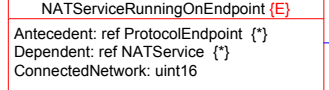
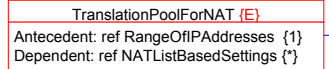
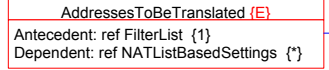
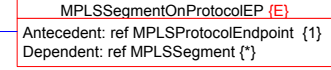
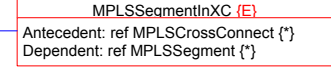
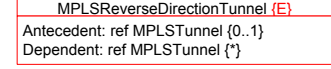
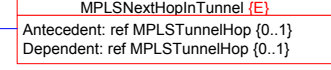
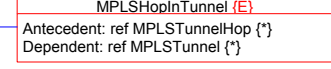
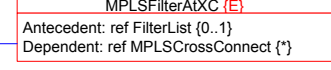
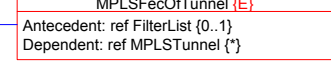
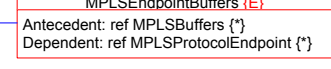
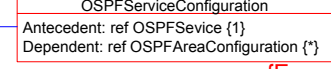
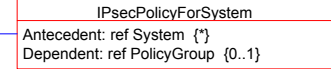
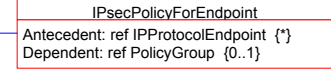
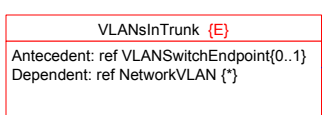
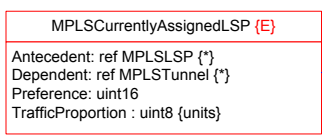
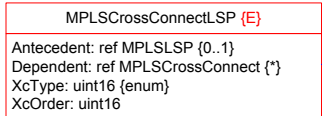
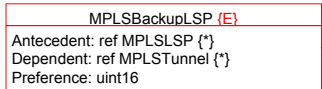
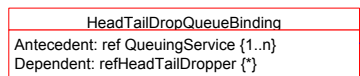
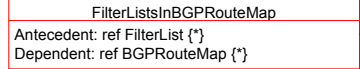
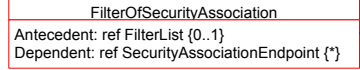
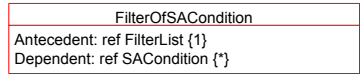
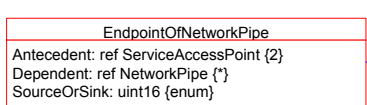
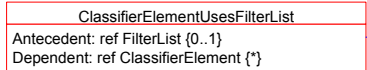
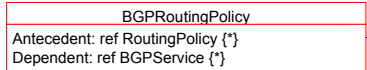
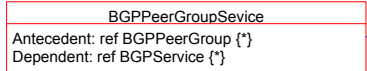
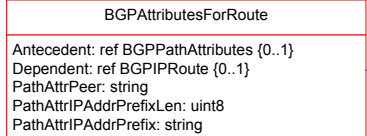
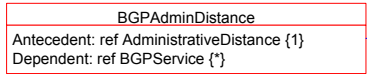
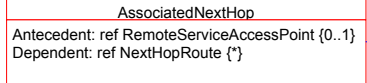
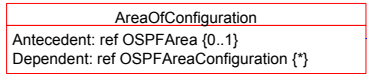
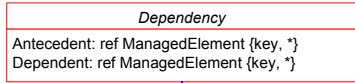
-  Inheritance
-  Association
-  Association with WEAK reference
-  Aggregation
-  Aggregation with WEAK reference
-  Composition Aggregation
-  Equivalent to: 0 .. n

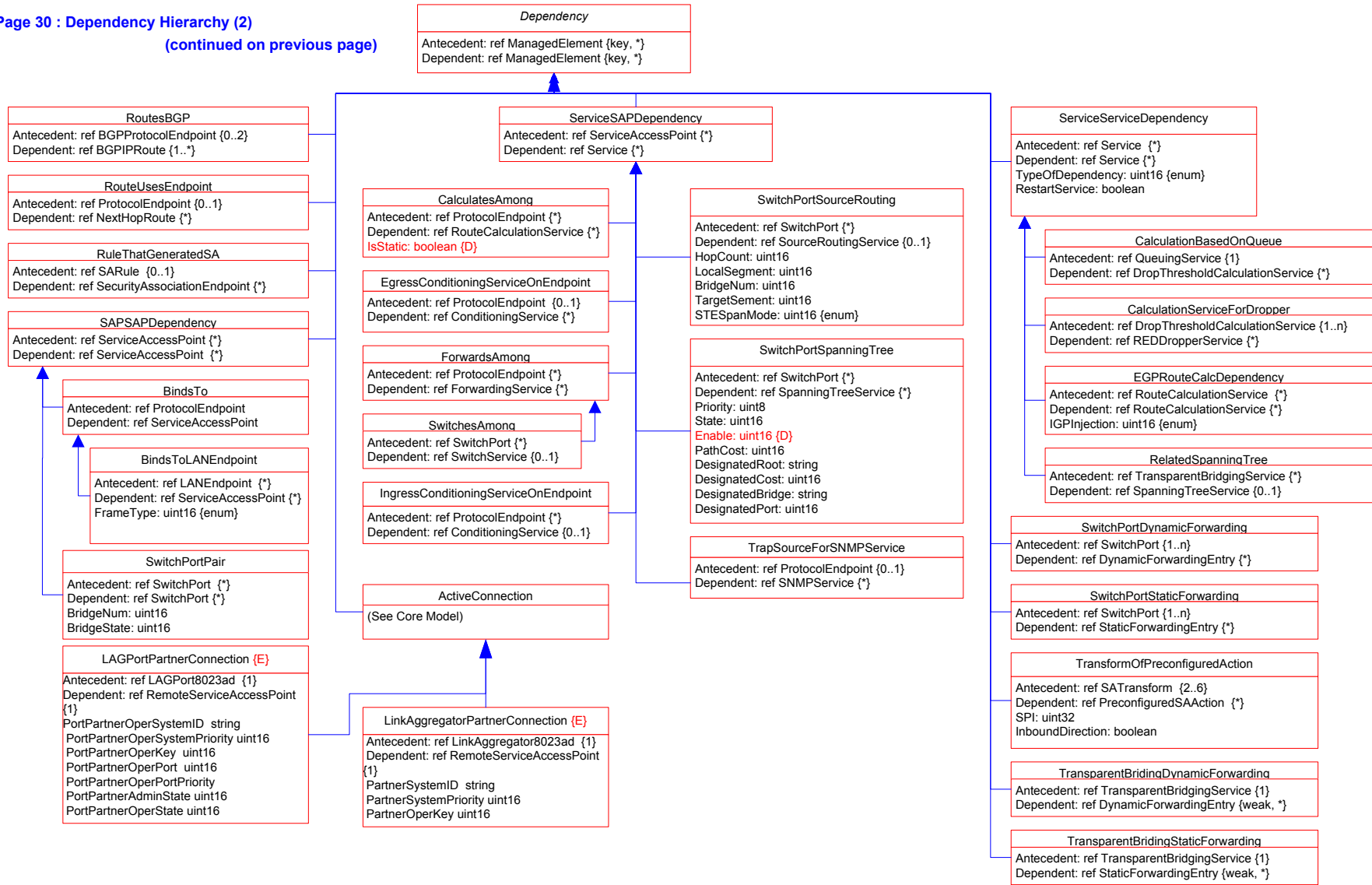


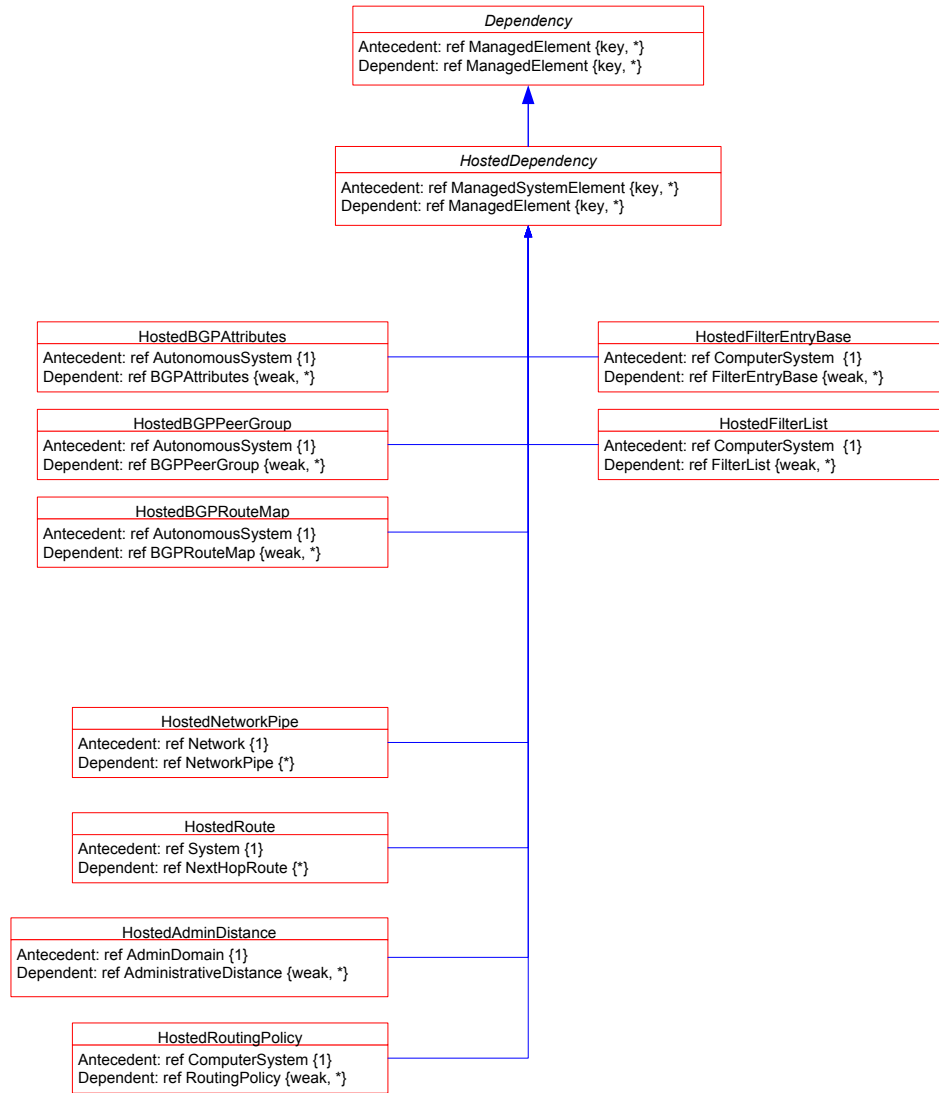
Page 28 : TextRedirect

-  Inheritance
-  Association
-  Association with WEAK reference
-  Aggregation
-  Aggregation with WEAK reference
-  Composition Aggregation
-  Equivalent to: 0..n

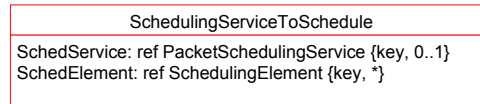
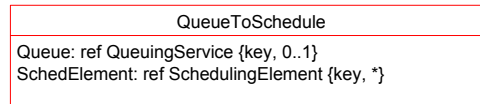
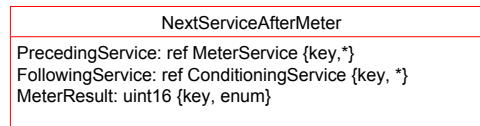
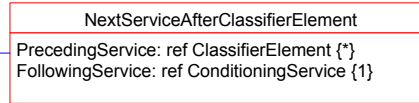
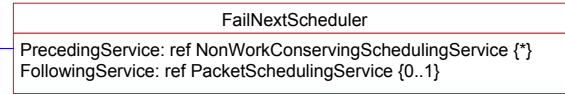
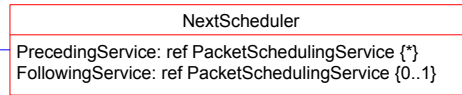
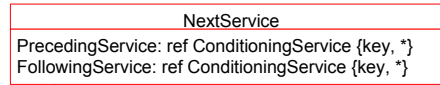
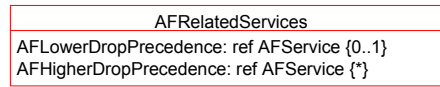
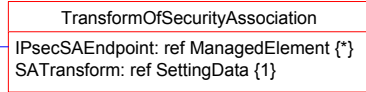
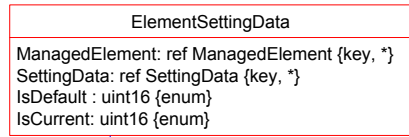
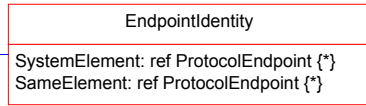
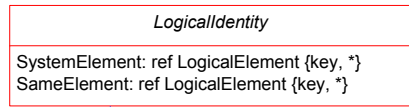


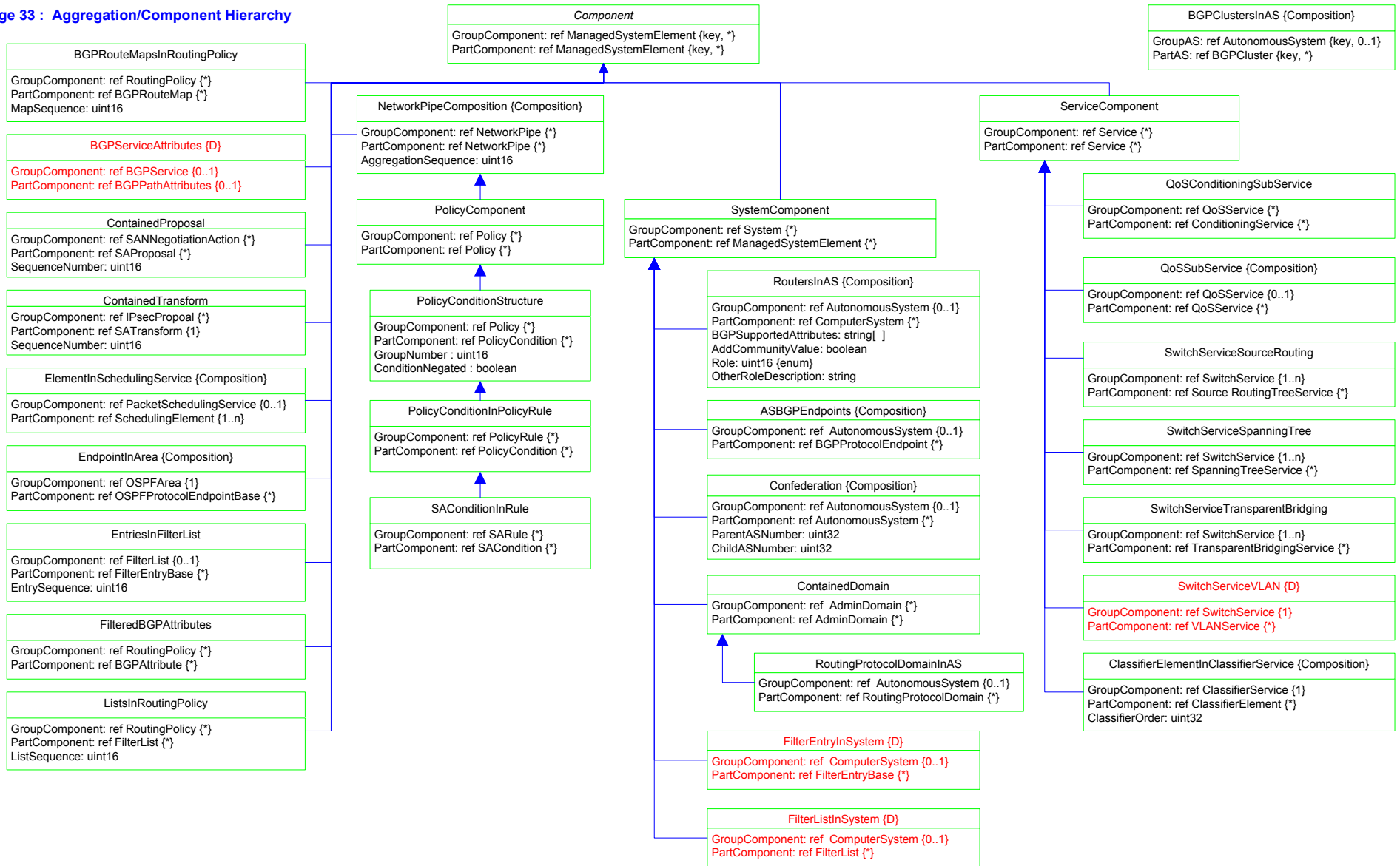




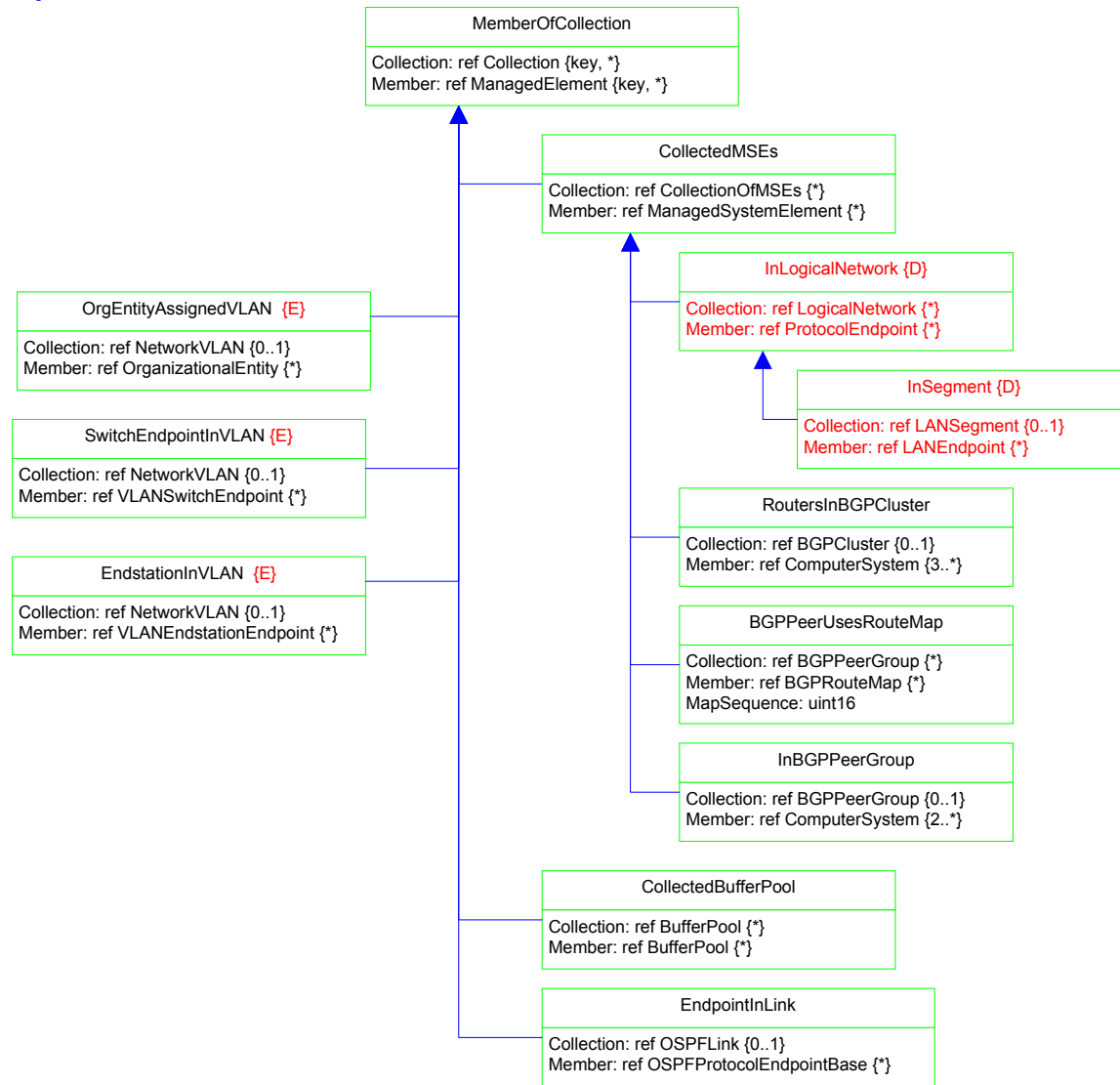


Page 32 : Association (Non-Aggregation/Dependency) Hierarchy





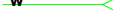






Page 34 : MemberOfCollection Hierarchy



Page 35 : Deprecated VLAN

-  Inheritance
-  Association
-  Association with WEAK reference
-  Aggregation
-  Aggregation with WEAK reference
-  Composition Aggregation
-  Equivalent to: 0 .. n

