






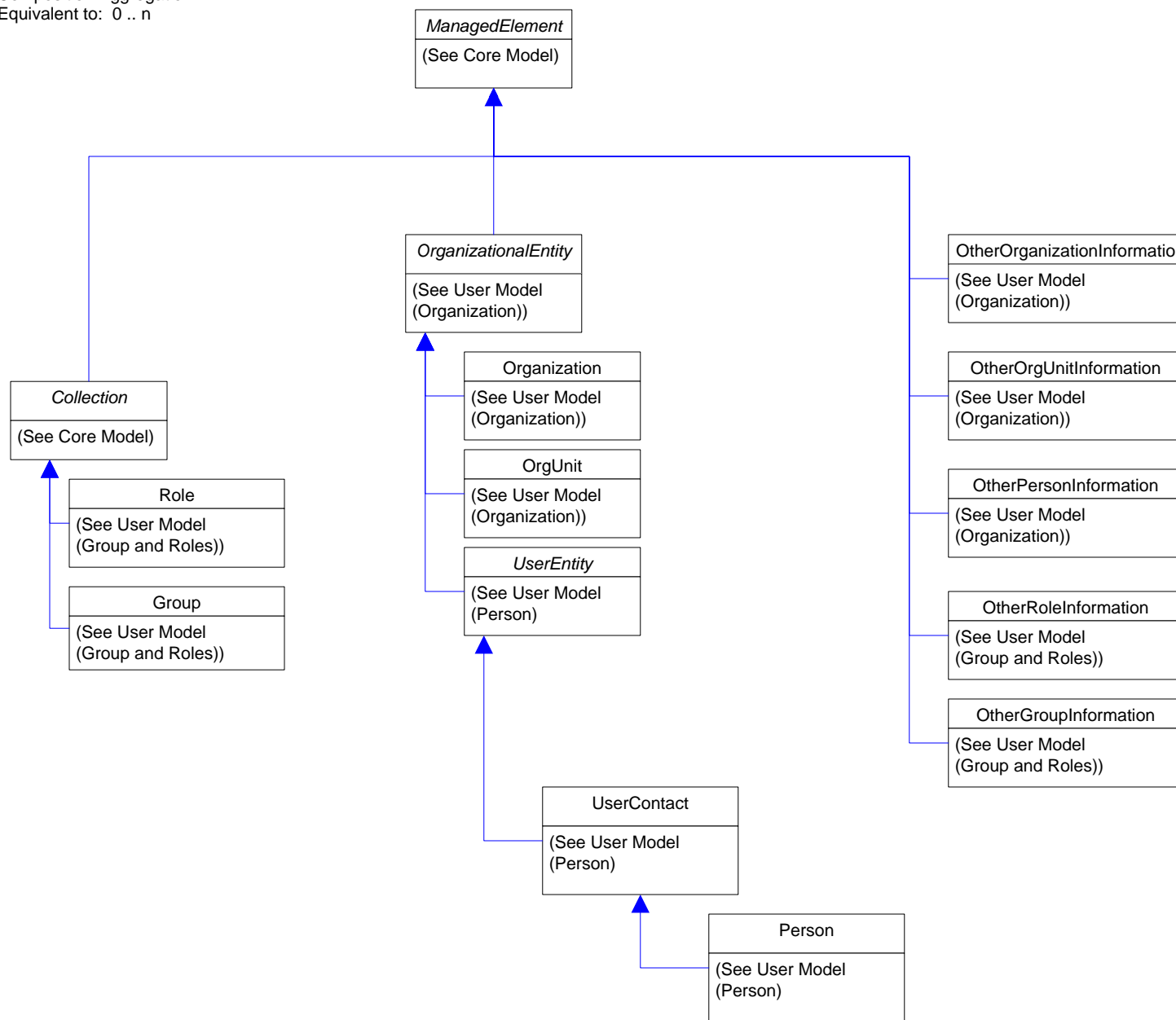
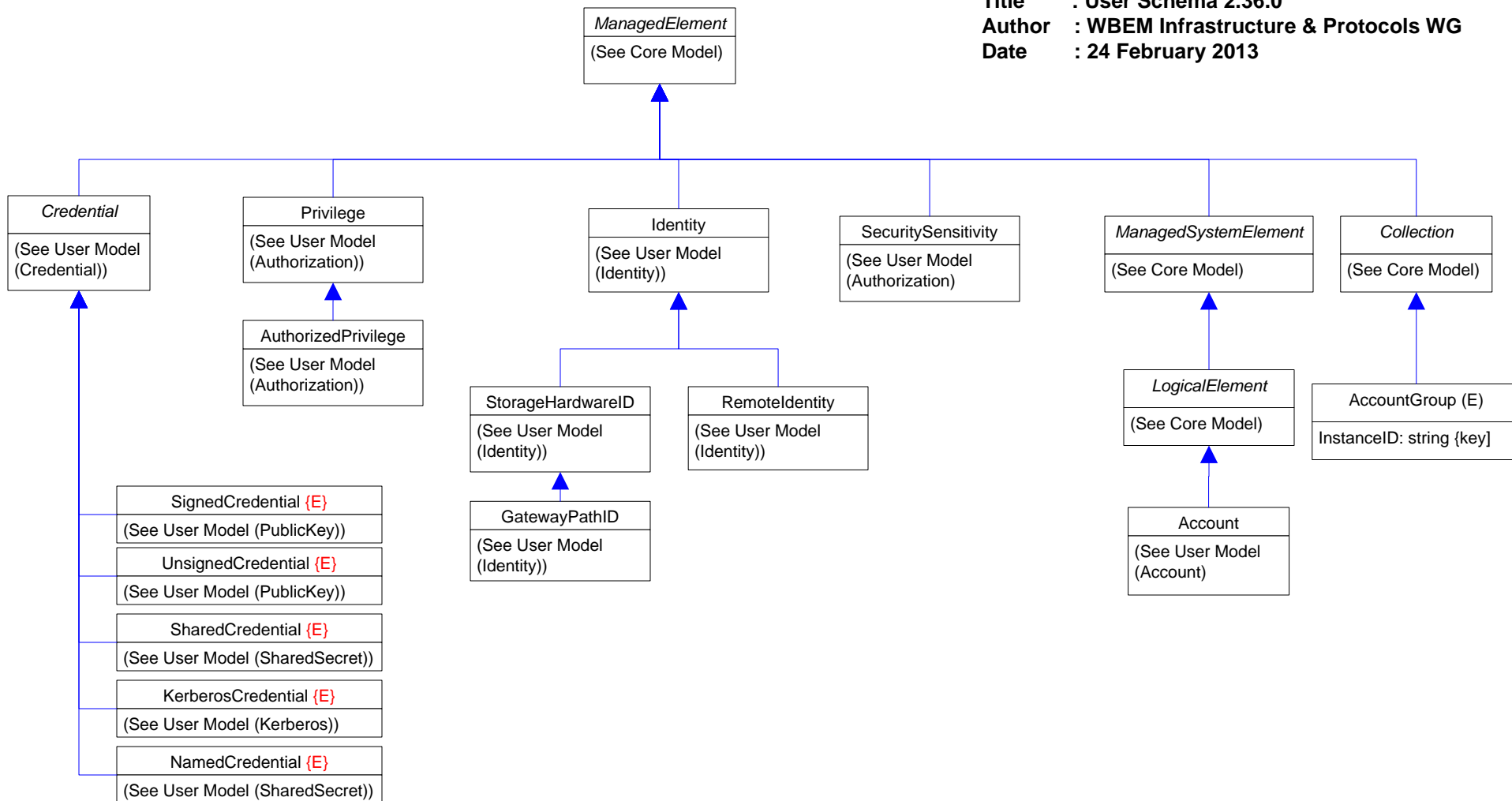
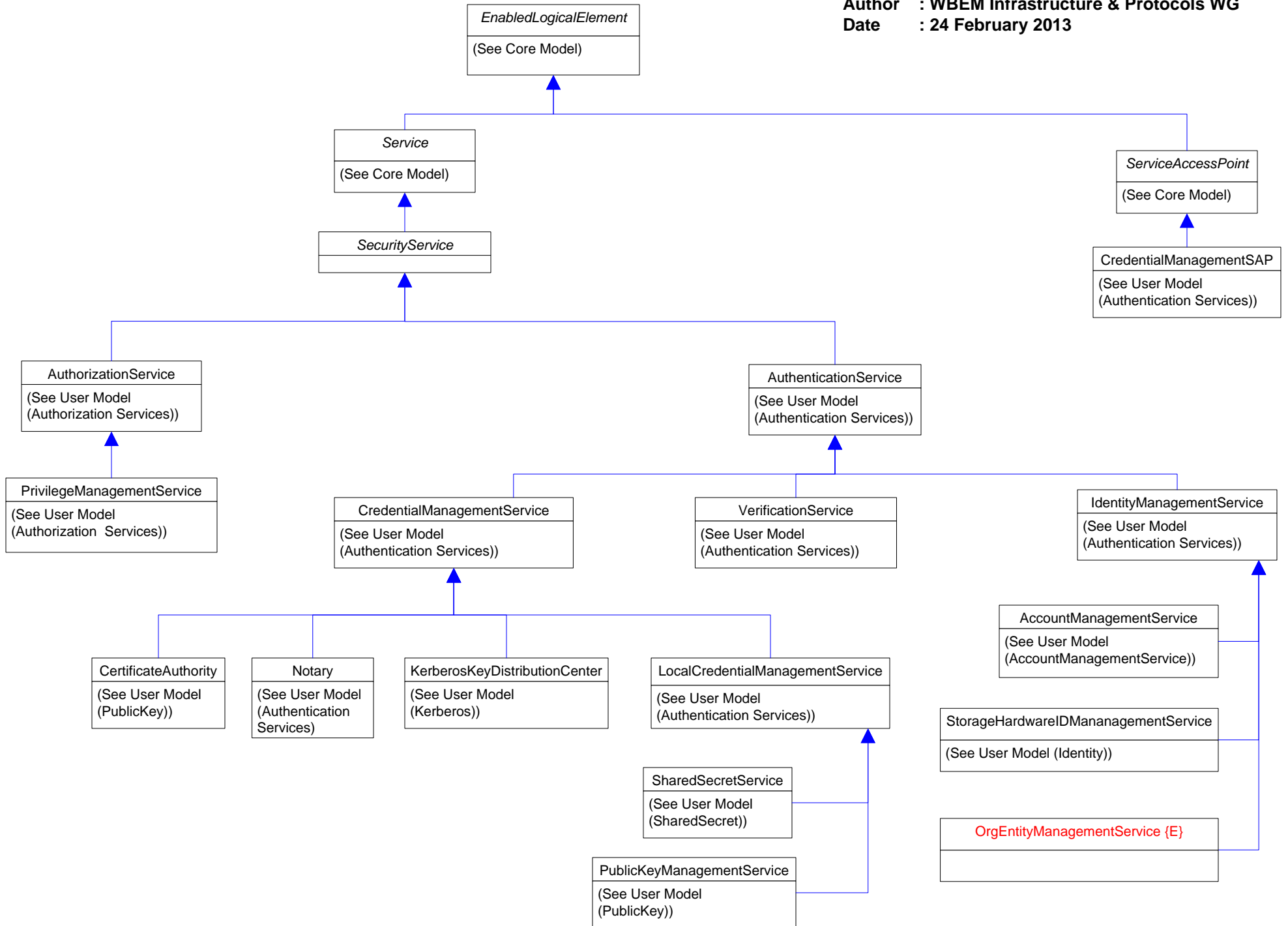
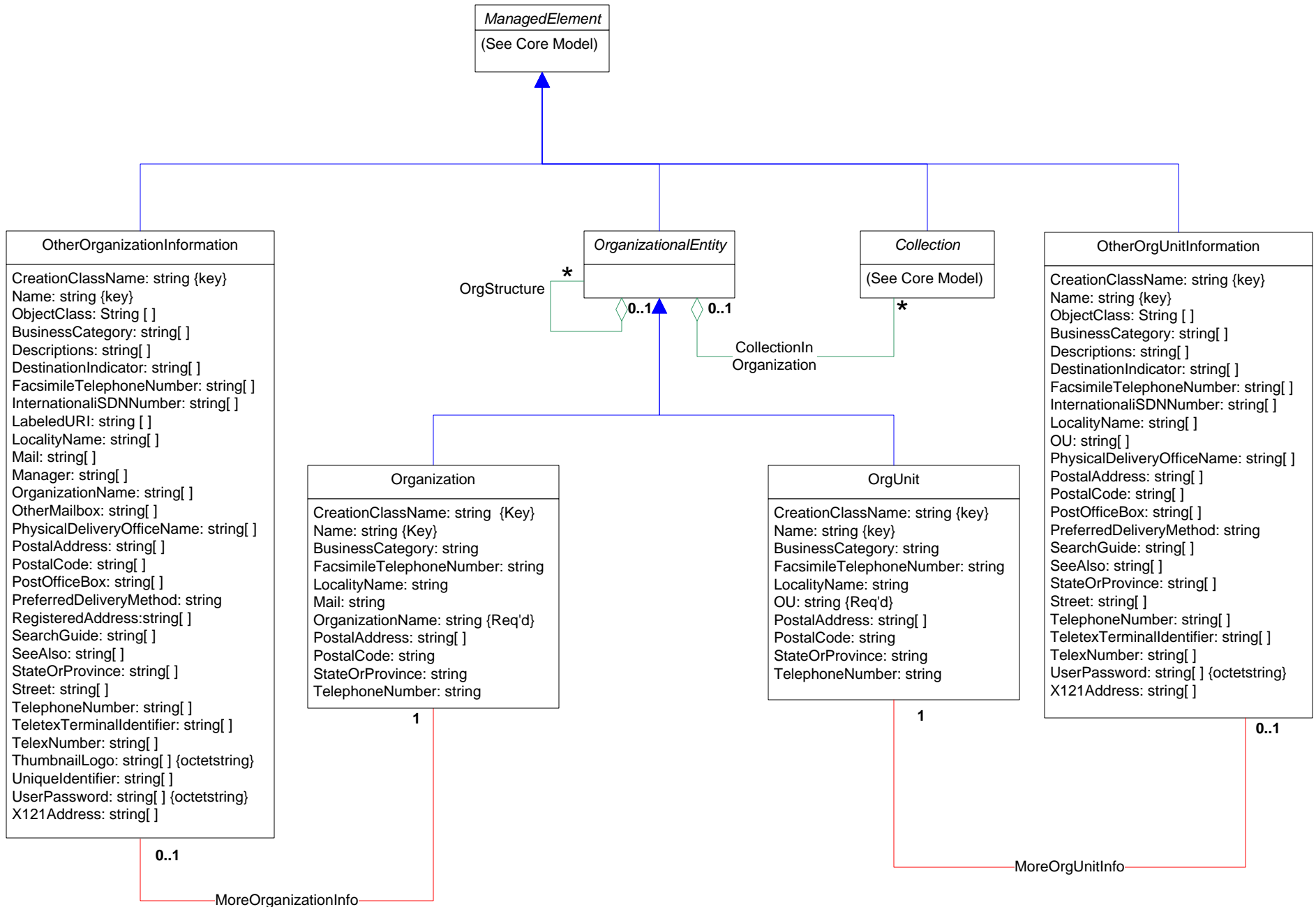


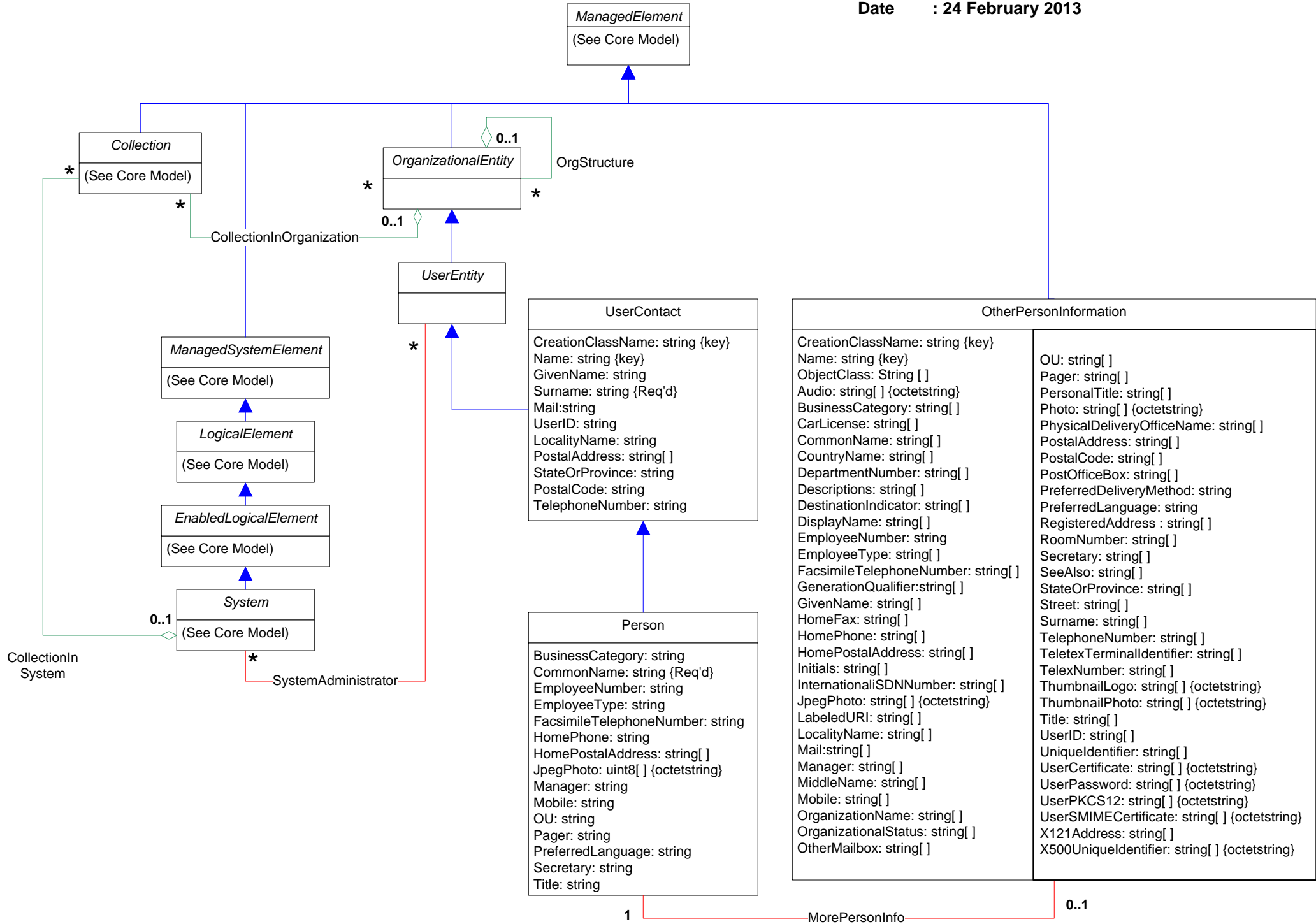
-  Inheritance
-  Association
-  Association with WEAK reference
-  Aggregation
-  Aggregation with WEAK reference
-  Composition Aggregation
-  Equivalent to: 0 .. n

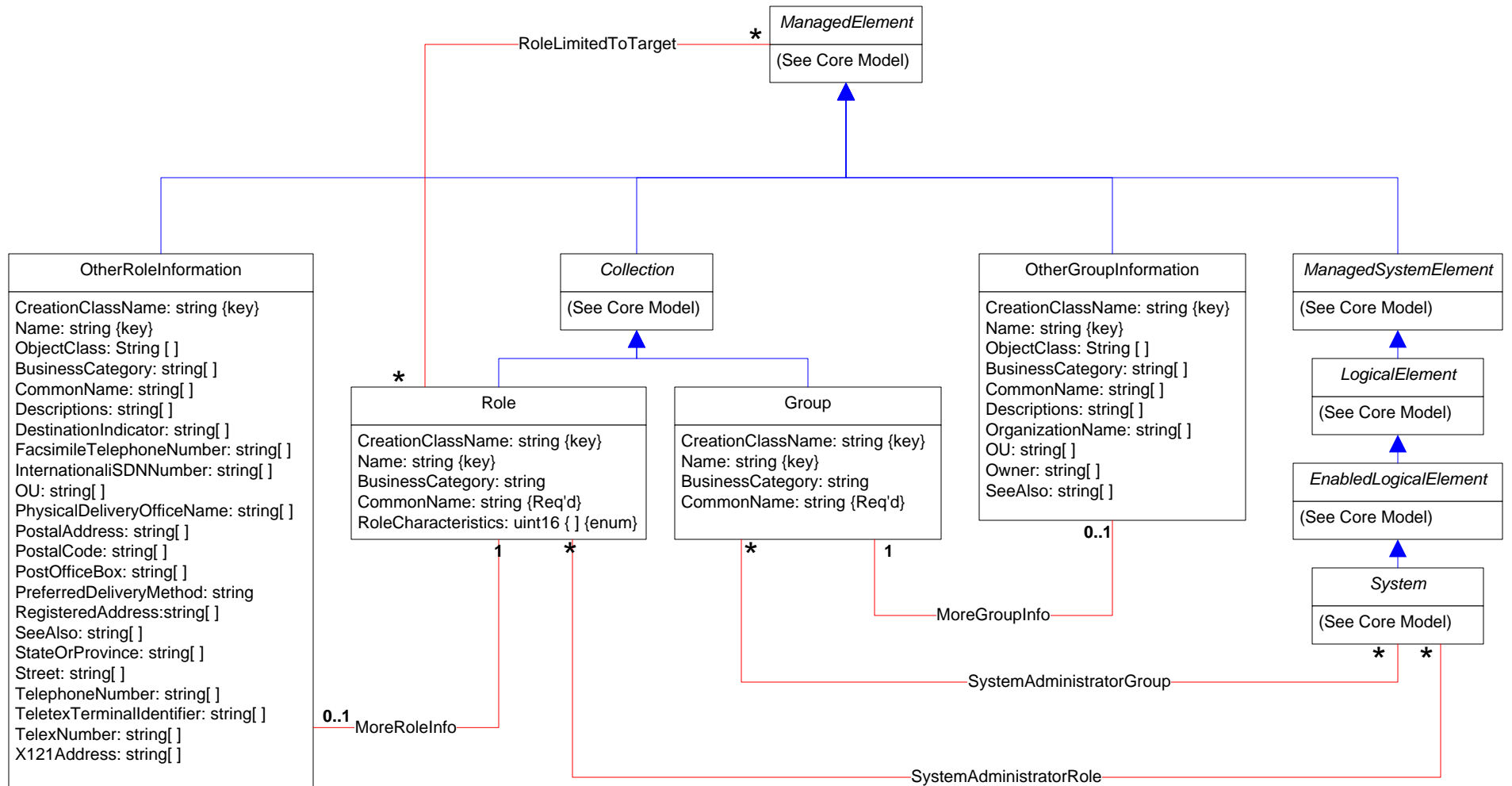


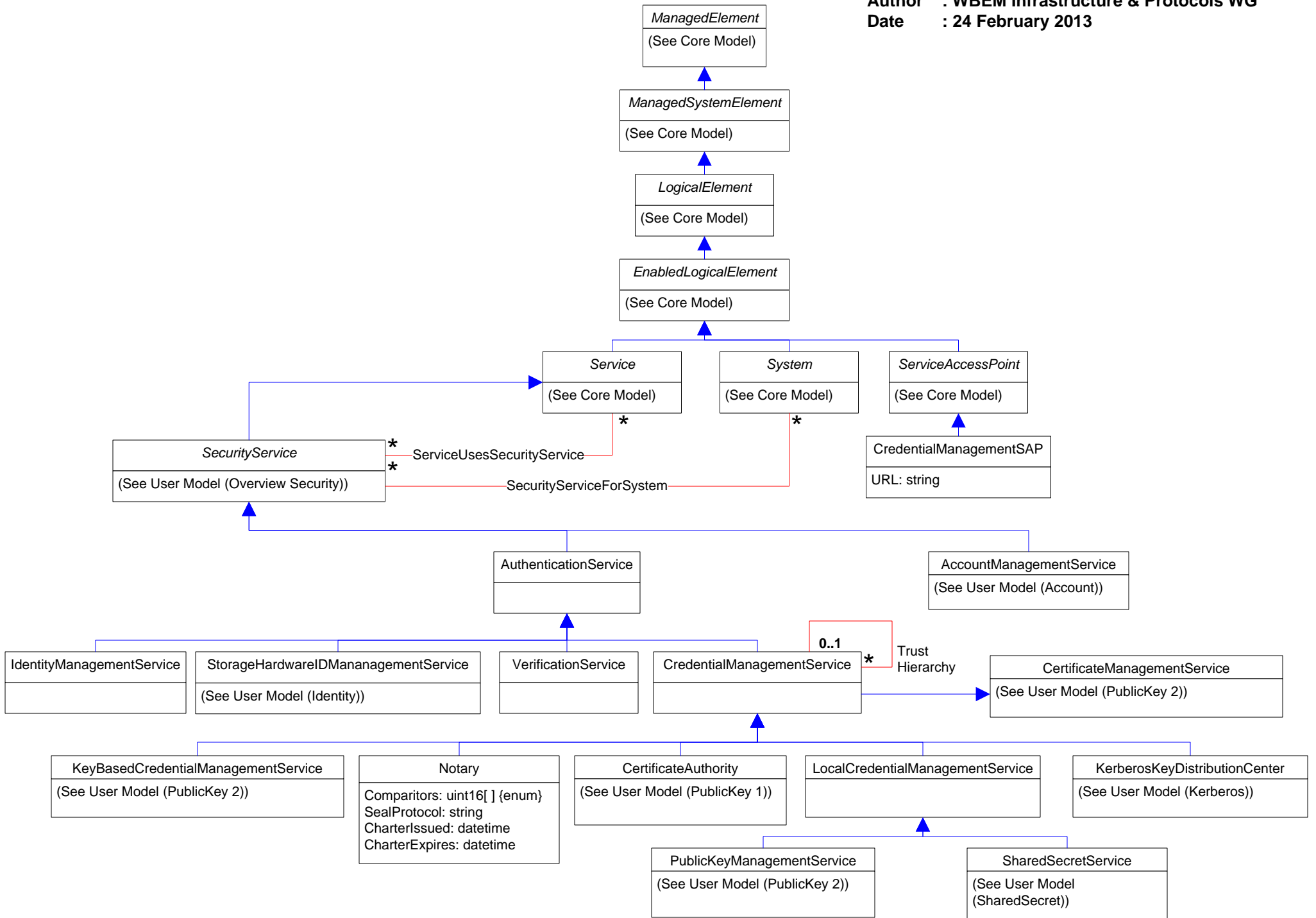


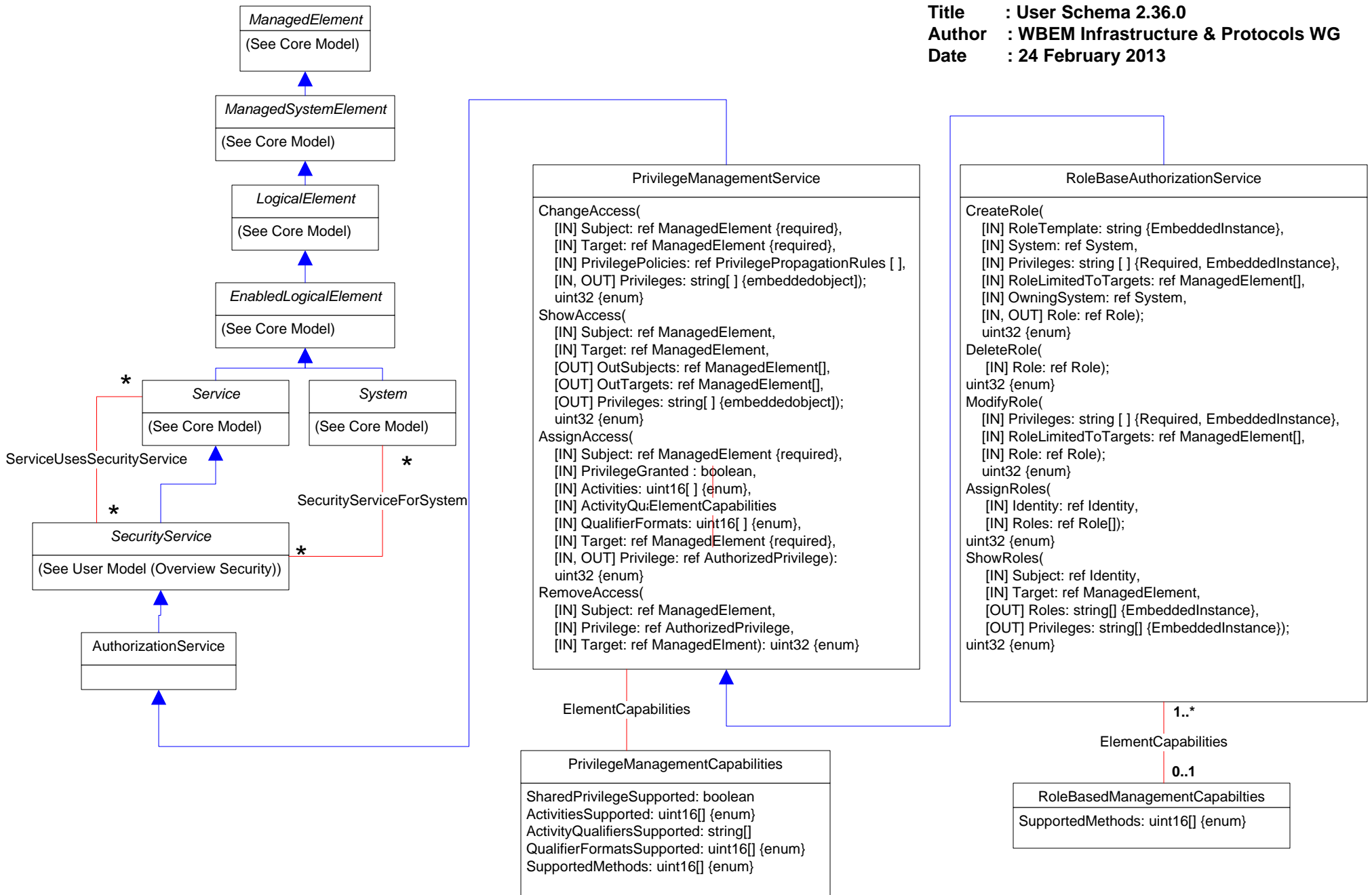


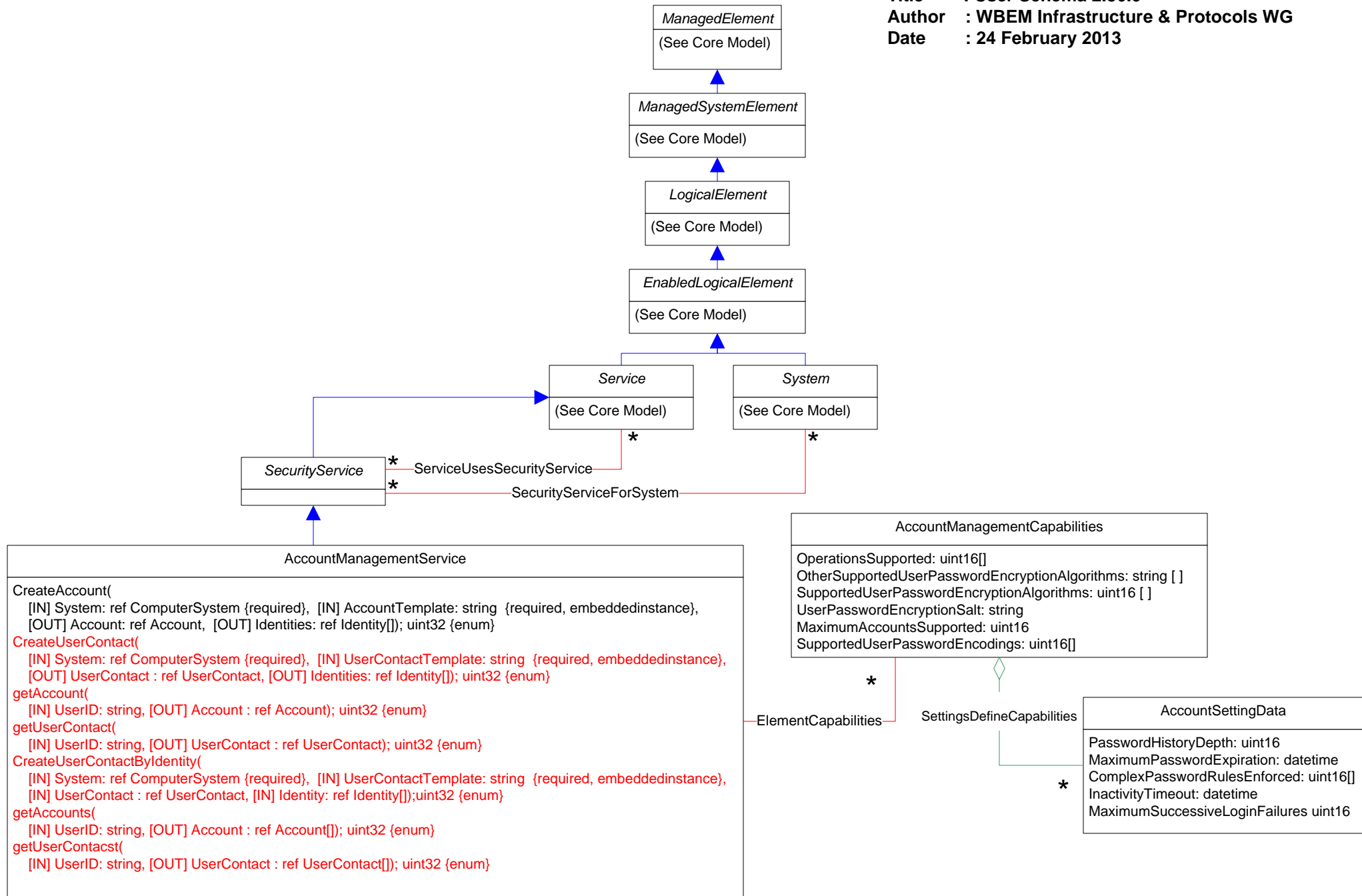


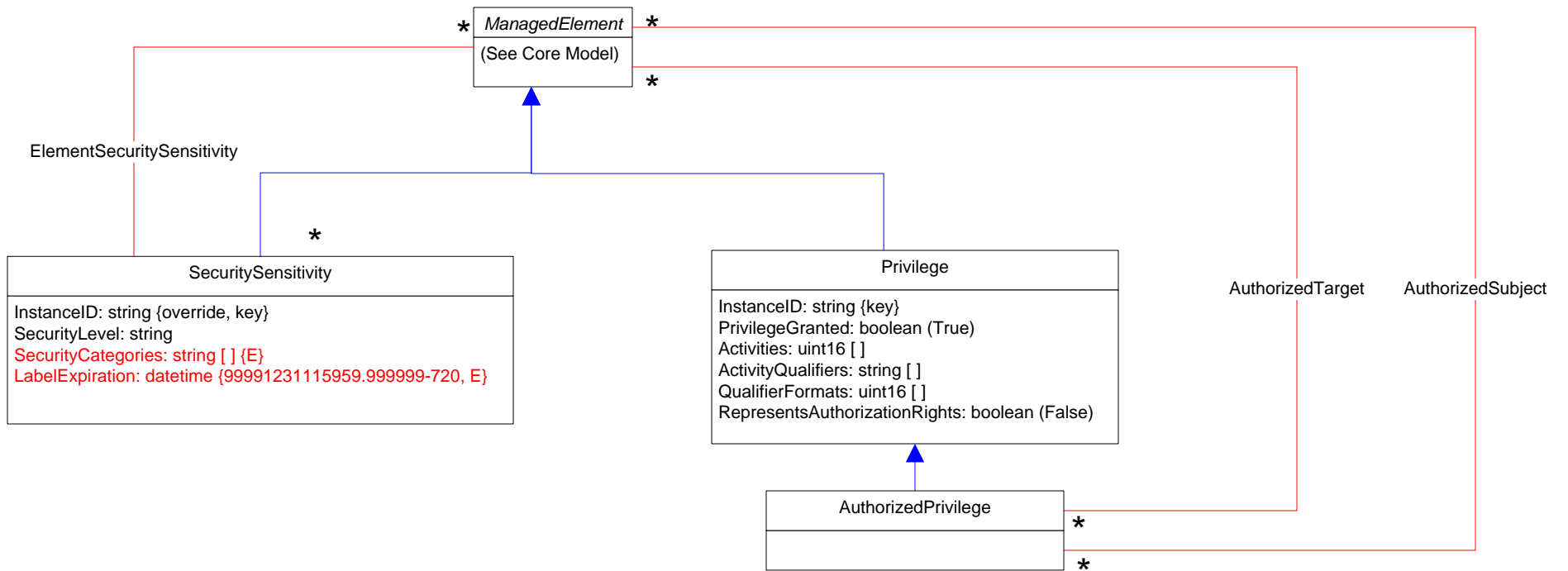


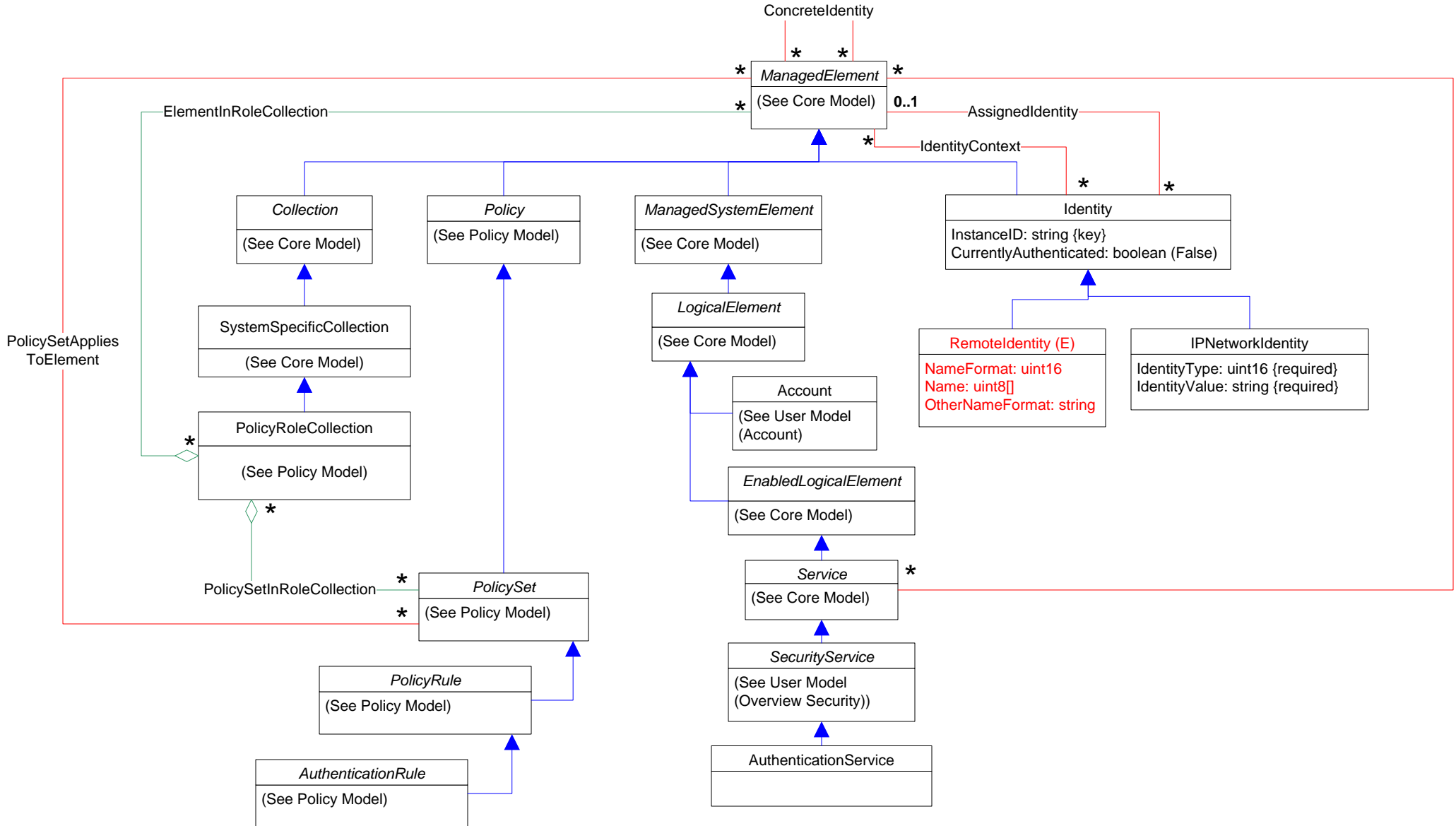


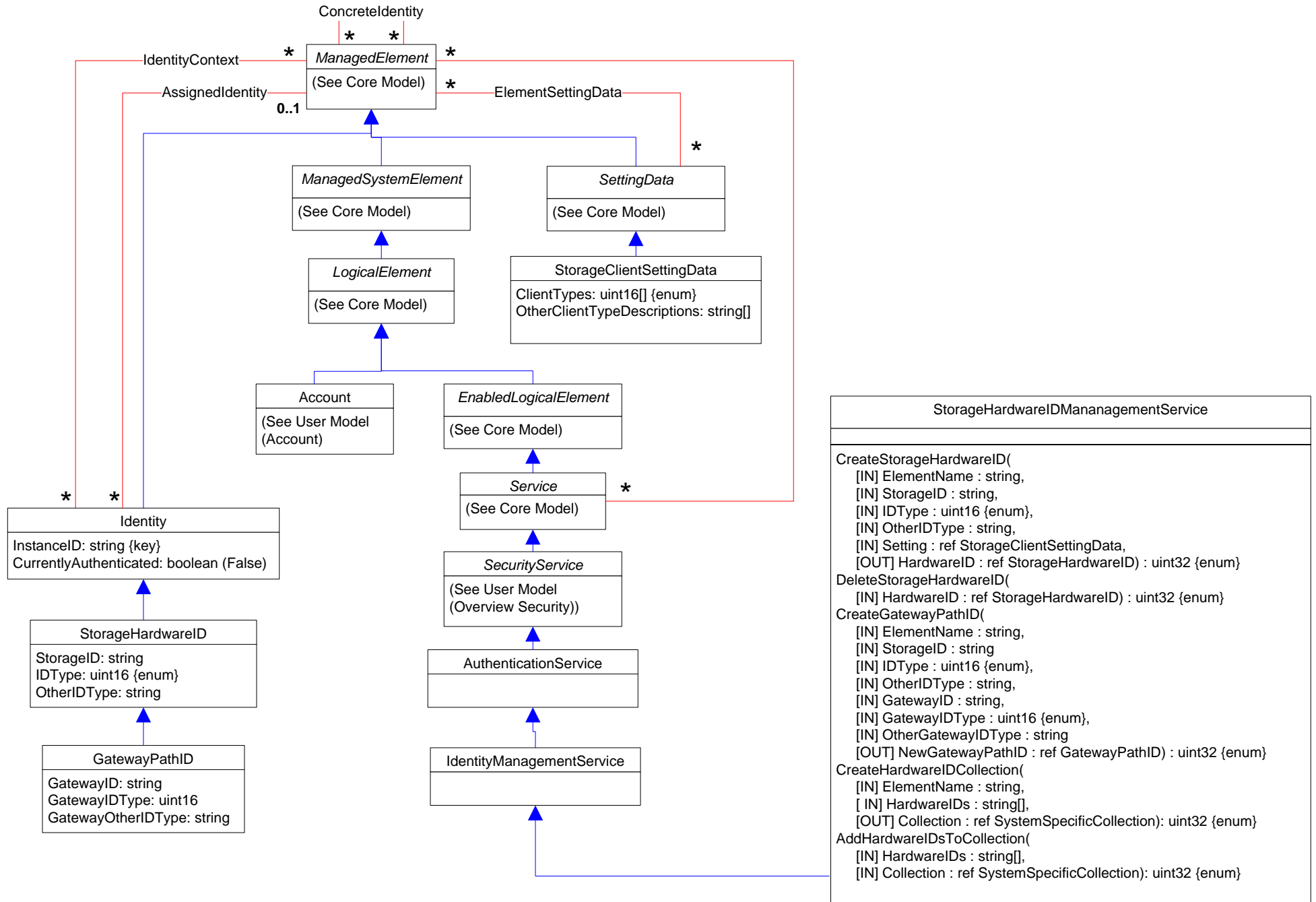












```

classDiagram
    class StorageHardwareIDManagementService {
        CreateStorageHardwareID(
            [IN] ElementName : string,
            [IN] StorageID : string,
            [IN] IDType : uint16 {enum},
            [IN] OtherIDType : string,
            [IN] Setting : ref StorageClientSettingData,
            [OUT] HardwareID : ref StorageHardwareID) : uint32 {enum}
        DeleteStorageHardwareID(
            [IN] HardwareID : ref StorageHardwareID) : uint32 {enum}
        CreateGatewayPathID(
            [IN] ElementName : string,
            [IN] StorageID : string,
            [IN] IDType : uint16 {enum},
            [IN] OtherIDType : string,
            [IN] GatewayID : string,
            [IN] GatewayIDType : uint16 {enum},
            [IN] OtherGatewayIDType : string,
            [OUT] NewGatewayPathID : ref GatewayPathID) : uint32 {enum}
        CreateHardwareIDCollection(
            [IN] ElementName : string,
            [IN] HardwareIDs : string[],
            [OUT] Collection : ref SystemSpecificCollection) : uint32 {enum}
        AddHardwareIDsToCollection(
            [IN] HardwareIDs : string[],
            [IN] Collection : ref SystemSpecificCollection) : uint32 {enum}
    }
    class Identity {
        InstanceID : string {key}
        CurrentlyAuthenticated : boolean (False)
    }
    class StorageHardwareID {
        StorageID : string
        IDType : uint16 {enum}
        OtherIDType : string
    }
    class GatewayPathID {
        GatewayID : string
        GatewayIDType : uint16
        GatewayOtherIDType : string
    }
    class ManagedElement {
        (See Core Model)
    }
    class ManagedSystemElement {
        (See Core Model)
    }
    class LogicalElement {
        (See Core Model)
    }
    class SettingData {
        (See Core Model)
    }
    class StorageClientSettingData {
        ClientTypes : uint16[] {enum}
        OtherClientTypeDescriptions : string[]
    }
    class Service {
        (See Core Model)
    }
    class SecurityService {
        (See User Model (Overview Security))
    }
    class AuthenticationService
    class IdentityManagementService
    class Account {
        (See User Model (Account))
    }
    class EnabledLogicalElement {
        (See Core Model)
    }
    Identity "1" -- "*" ManagedElement : AssignedIdentity
    Identity "*" -- "*" ManagedElement : IdentityContext
    ManagedElement "0..1" -- "*" SettingData : ElementSettingData
    Service "*" -- "*" ManagedElement : ElementSettingData
    StorageHardwareIDManagementService -- IdentityManagementService
    
```

