






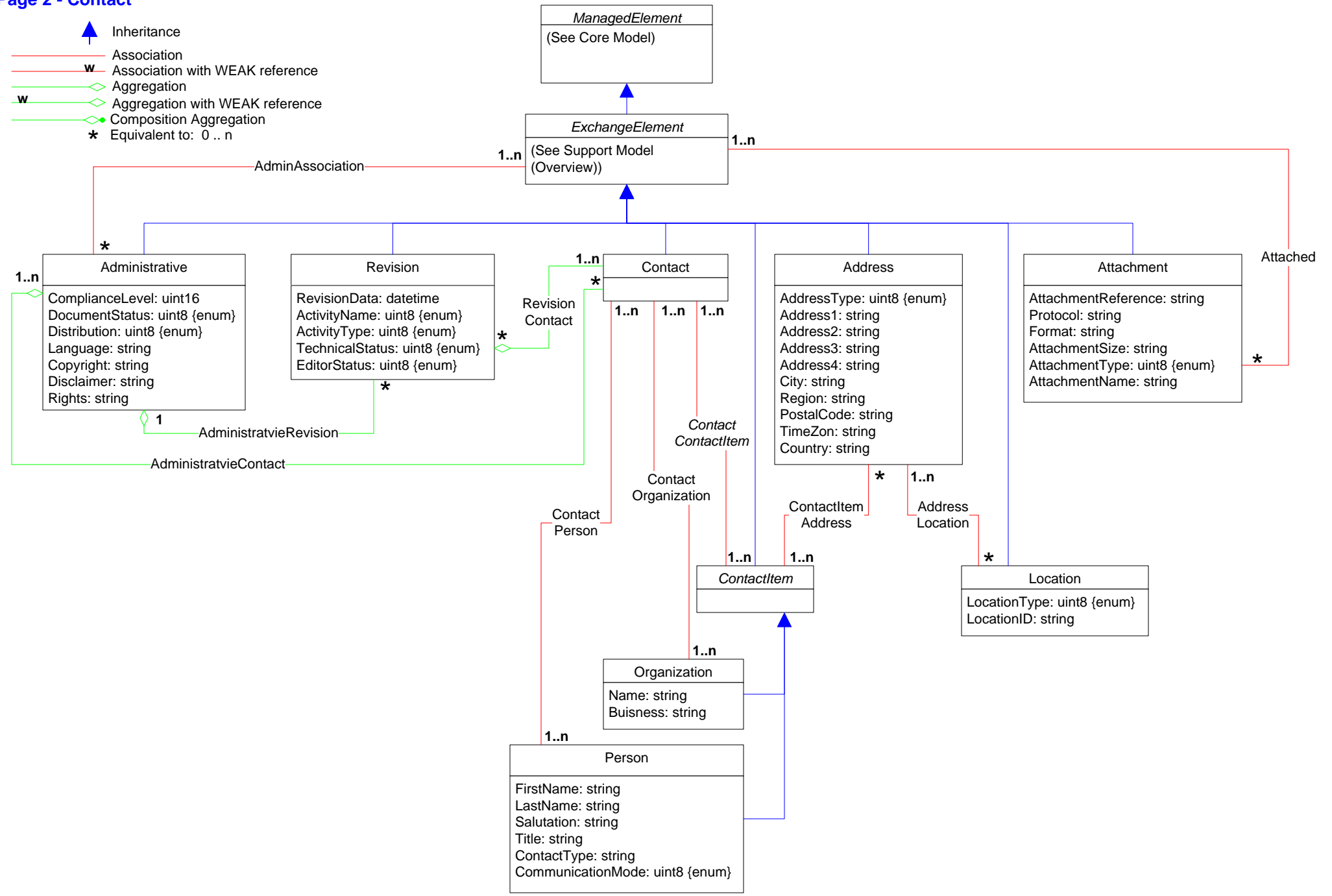









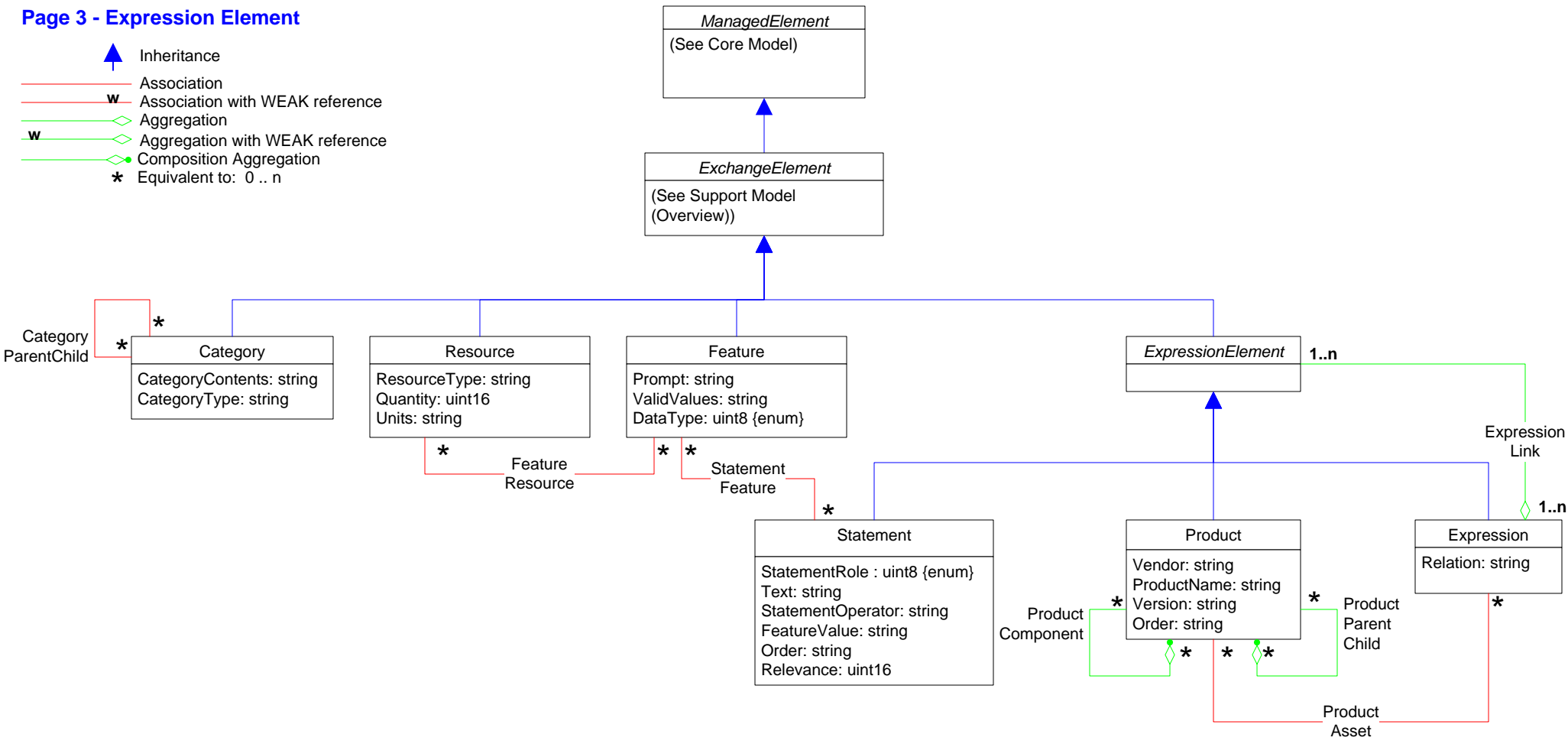
Page 2 - Contact

-  Inheritance
-  Association
-  Association with WEAK reference
-  Aggregation
-  Aggregation with WEAK reference
-  Composition Aggregation
-  Equivalent to: 0..n

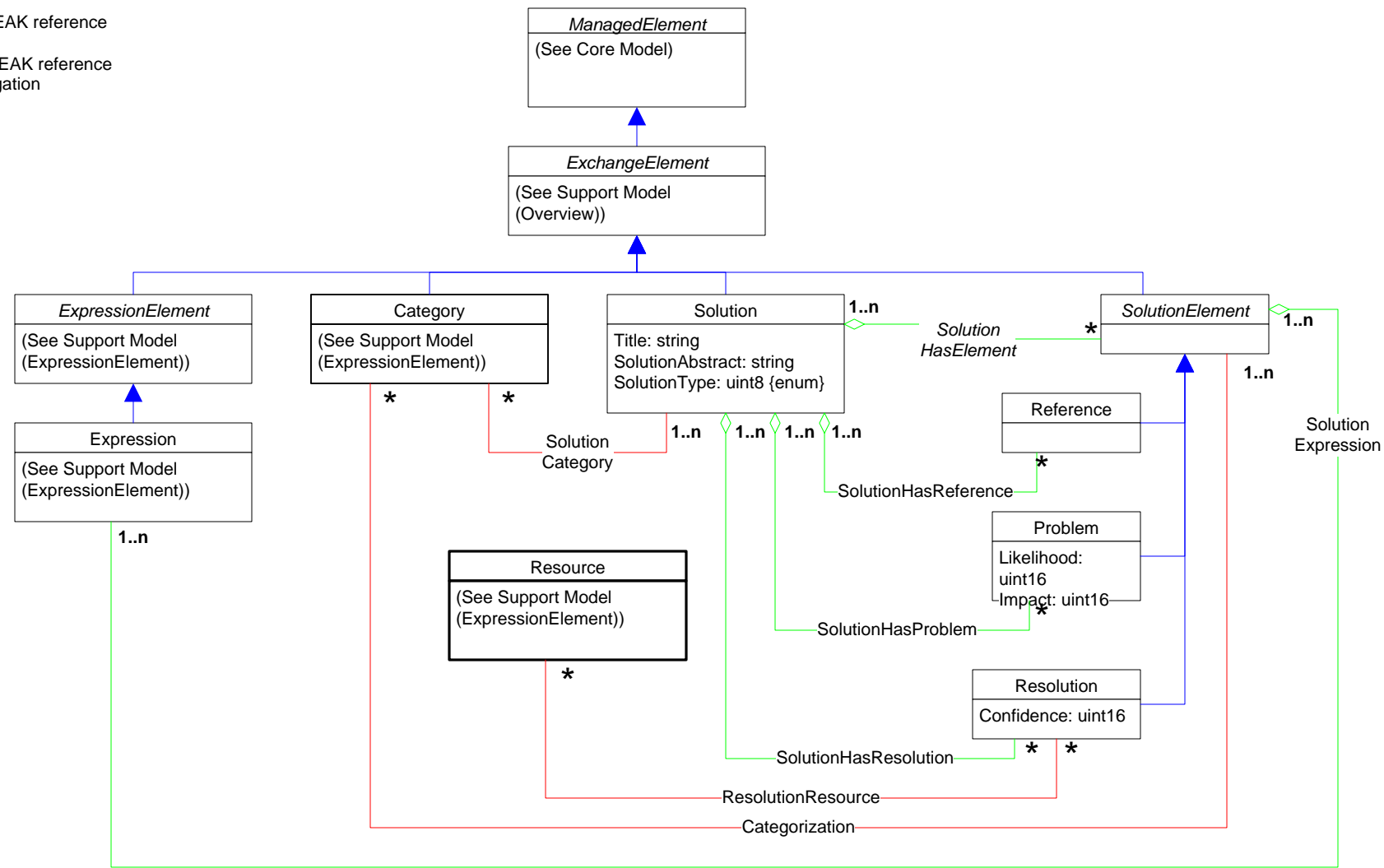


Page 3 - Expression Element

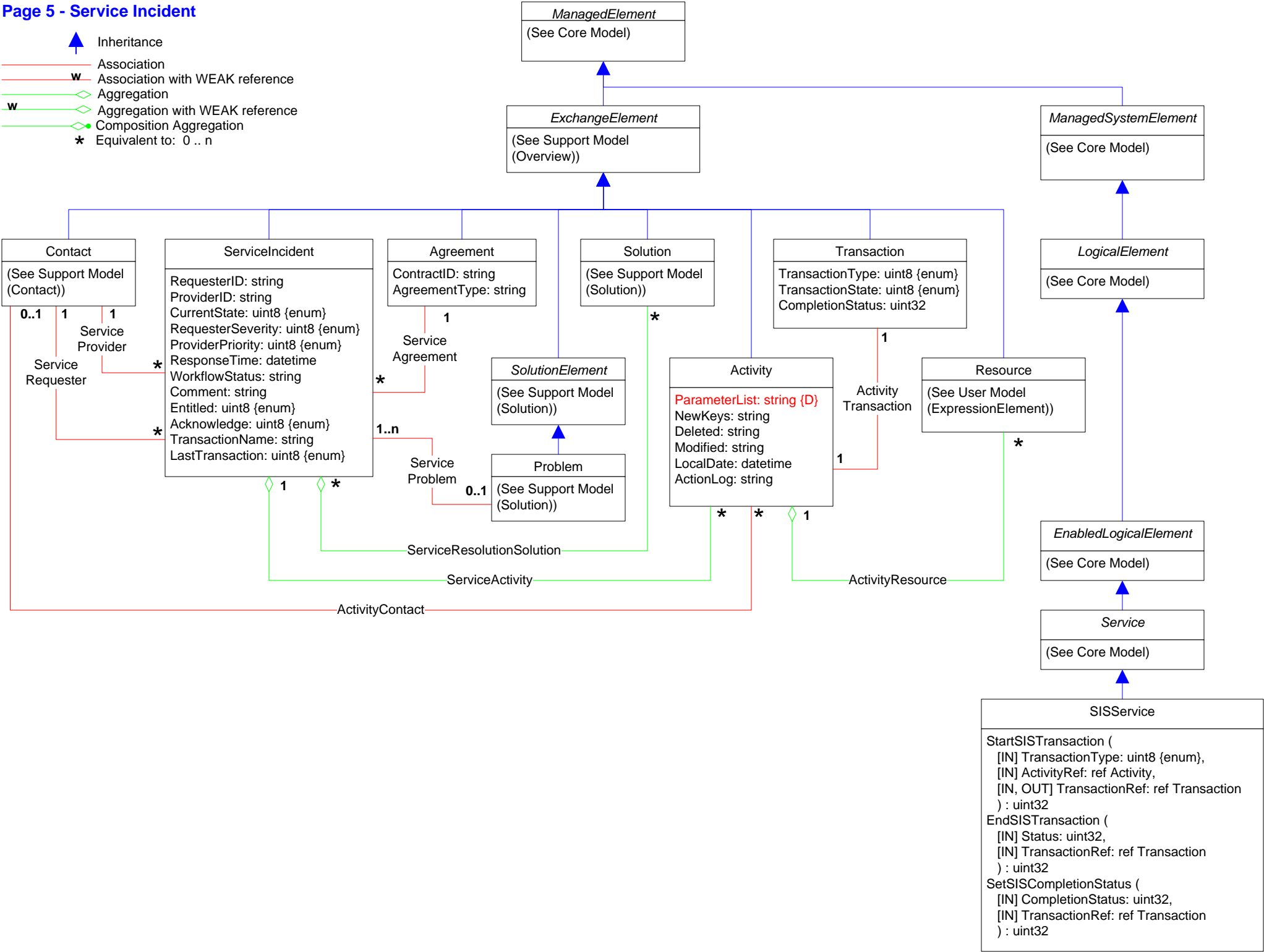
-  Inheritance
-  Association
-  Association with WEAK reference
-  Aggregation
-  Aggregation with WEAK reference
-  Composition Aggregation
-  Equivalent to: 0..n



- Inheritance
- Association
- Association with WEAK reference
- Aggregation
- Aggregation with WEAK reference
- Composition Aggregation
- Equivalent to: 0..n



- Inheritance
- Association
- Association with WEAK reference
- Aggregation
- Aggregation with WEAK reference
- Composition Aggregation
- Equivalent to: 0..n



Page 6 - Dependency Hierarchy

Dependency
Antecedent ref ManagedElement {key}
Dependent ref ManagedElement {key}

ActivityContact
Antecedent : ref Activity {*}
Dependent : ref Contact {0..1}

ActivityTransaction
Antecedent : ref Activity {1}
Dependent : ref Transaction {1}

AddressLocation
Antecedent : ref Address {1..n}
Dependent : ref Location {*}

AdminAssociation
Antecedent : ref ExchangeElement {1..n}
Dependent : ref Administrative {*}

Attached
Antecedent : ref Attachment {*}
Dependent : ref ExchangeElement {1..n}

Categorization
Antecedent : ref Category {*}
Dependent : ref SolutionElement {1..n}

ContactContactItem
Antecedent : ref Contract {1..n}
Dependent : ref ContactItem {1..n}

ContactOrganization
Antecedent : ref Contact {1..n}
Dependent : ref Organization {1..n}

ContactPerson
Antecedent : ref Contact {1..n}
Dependent : ref Person {1..n}

ContactItemAddress
Antecedent : ref ContactItem {1..n}
Dependent : ref Address {*}

FeatureResource
Antecedent : ref Feature {*}
Dependent : ref Resource {*}

ProductAsset
Antecedent : ref Product {*}
Dependent : ref Expression {*}

ResolutionResource
Antecedent : ref Resource {*}
Dependent : ref Resolution {*}

ServiceAgreement
Antecedent : ref ServiceIncident {*}
Dependent : ref Agreement {1}

ServiceProblem
Antecedent : ref ServiceIncident {1..n}
Dependent : ref Problem {0..1}

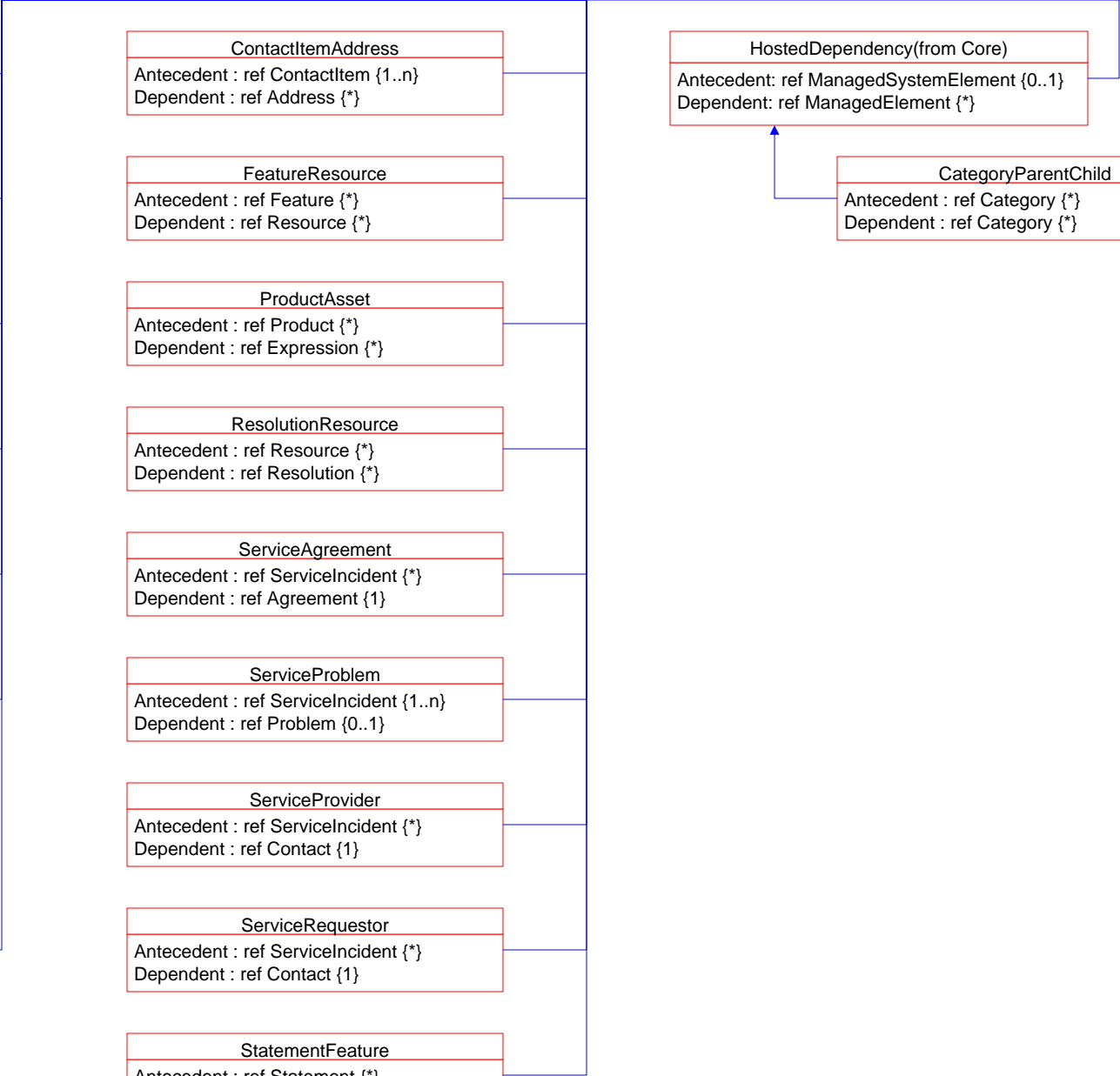
ServiceProvider
Antecedent : ref ServiceIncident {*}
Dependent : ref Contact {1}

ServiceRequestor
Antecedent : ref ServiceIncident {*}
Dependent : ref Contact {1}

StatementFeature
Antecedent : ref Statement {*}
Dependent : ref Feature {*}

HostedDependency(from Core)
Antecedent: ref ManagedSystemElement {0..1}
Dependent: ref ManagedElement {*}

CategoryParentChild
Antecedent : ref Category {*}
Dependent : ref Category {*}



Page 7 - Dependency Aggregations

