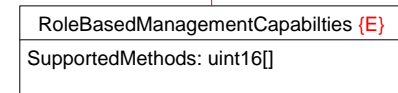
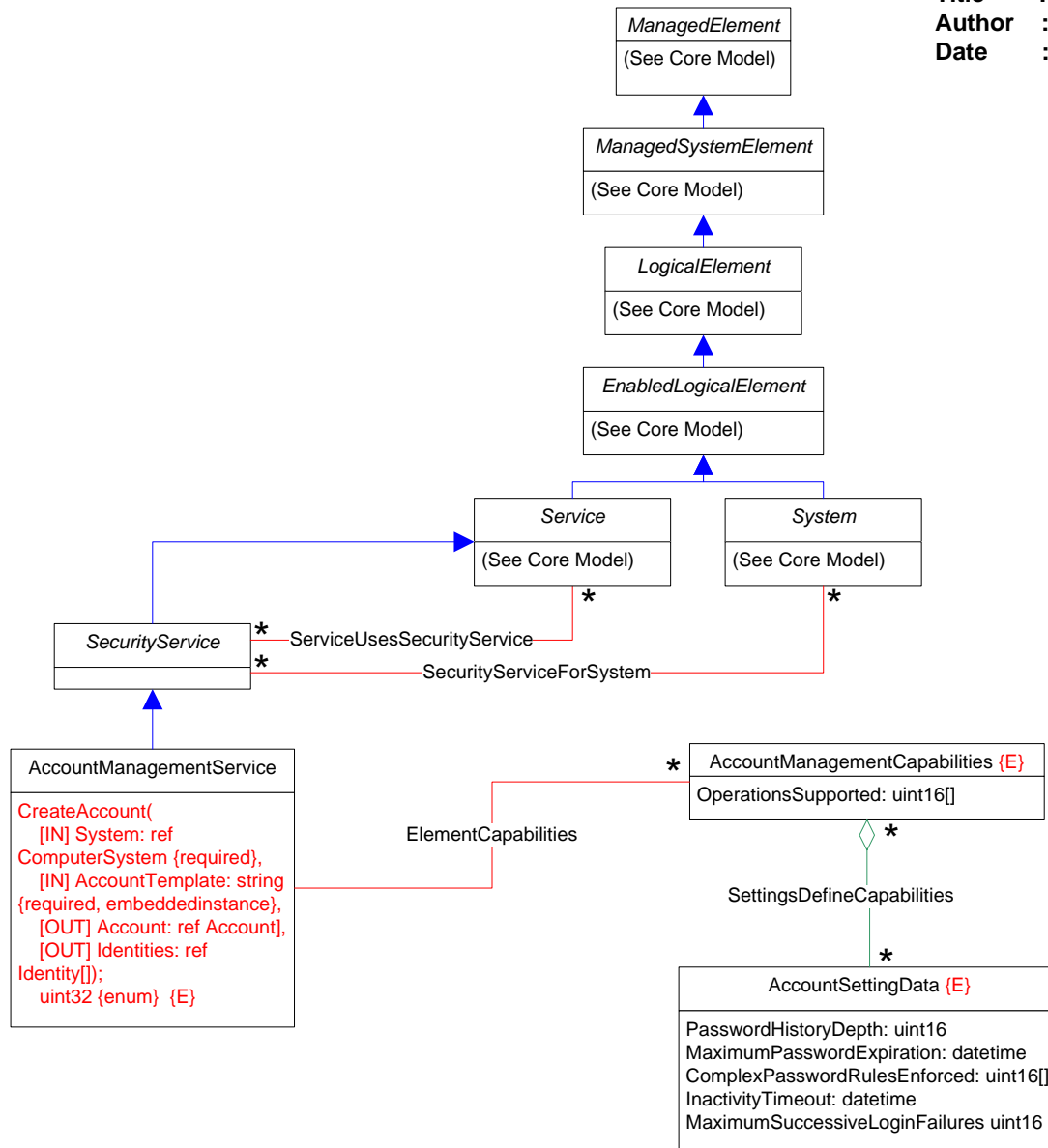


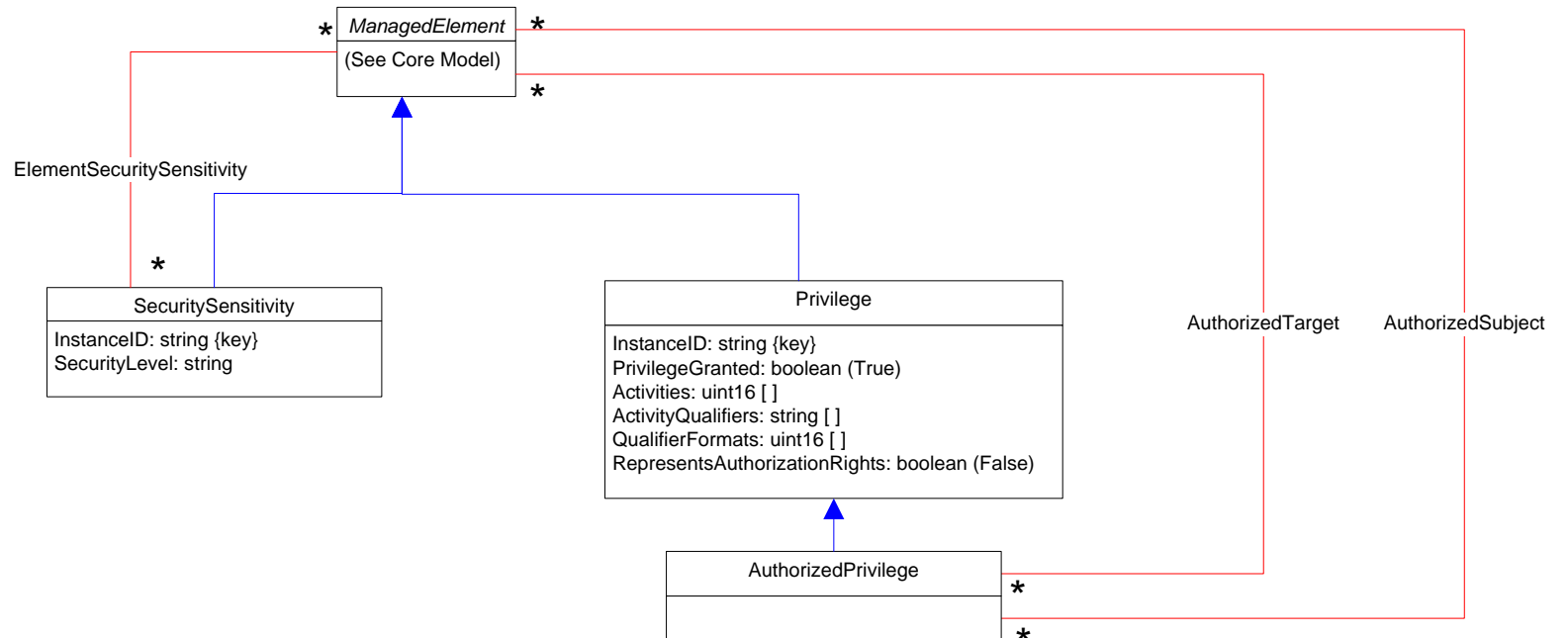
1..\*  
ElementCapabilities

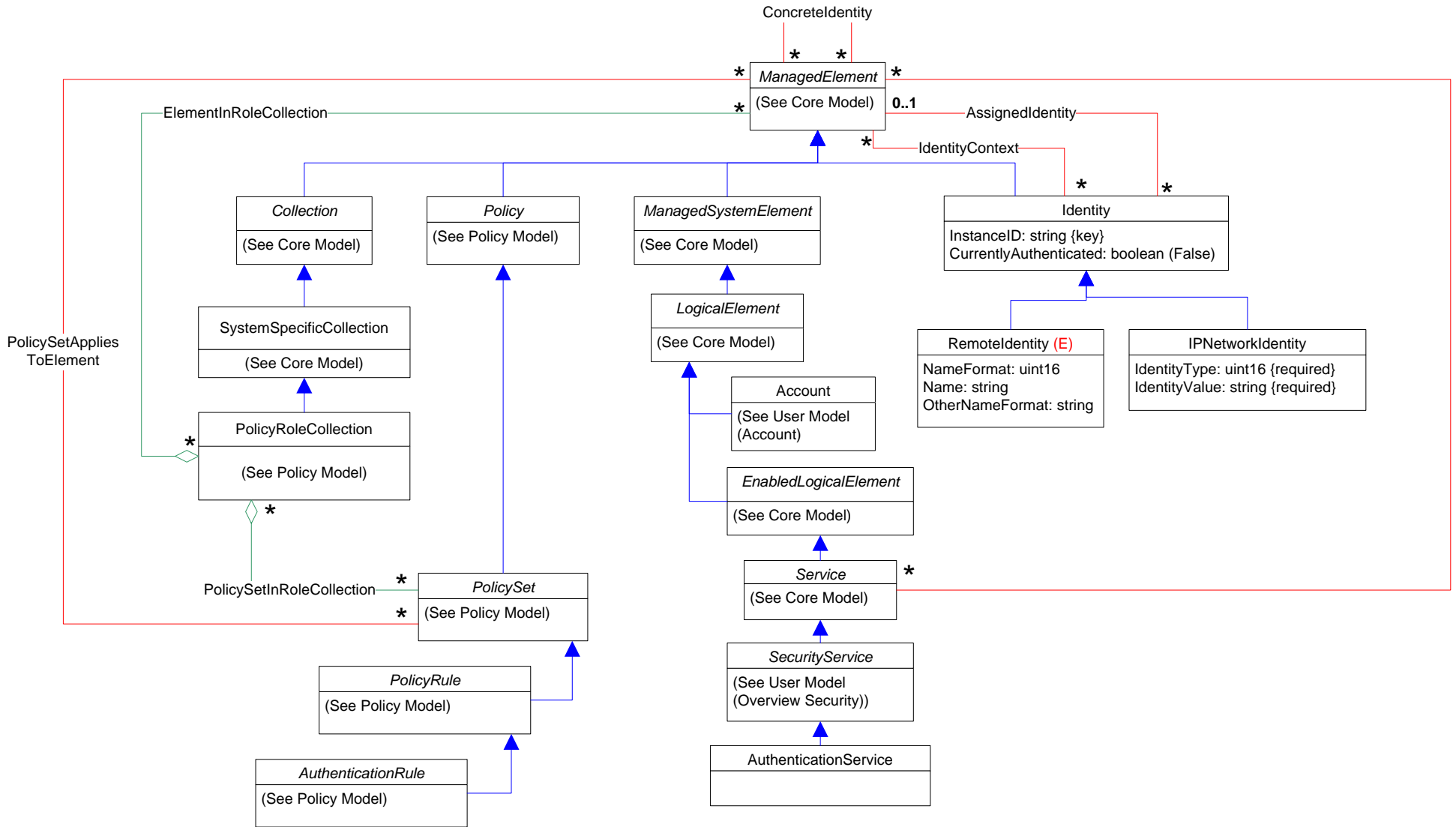
0..1

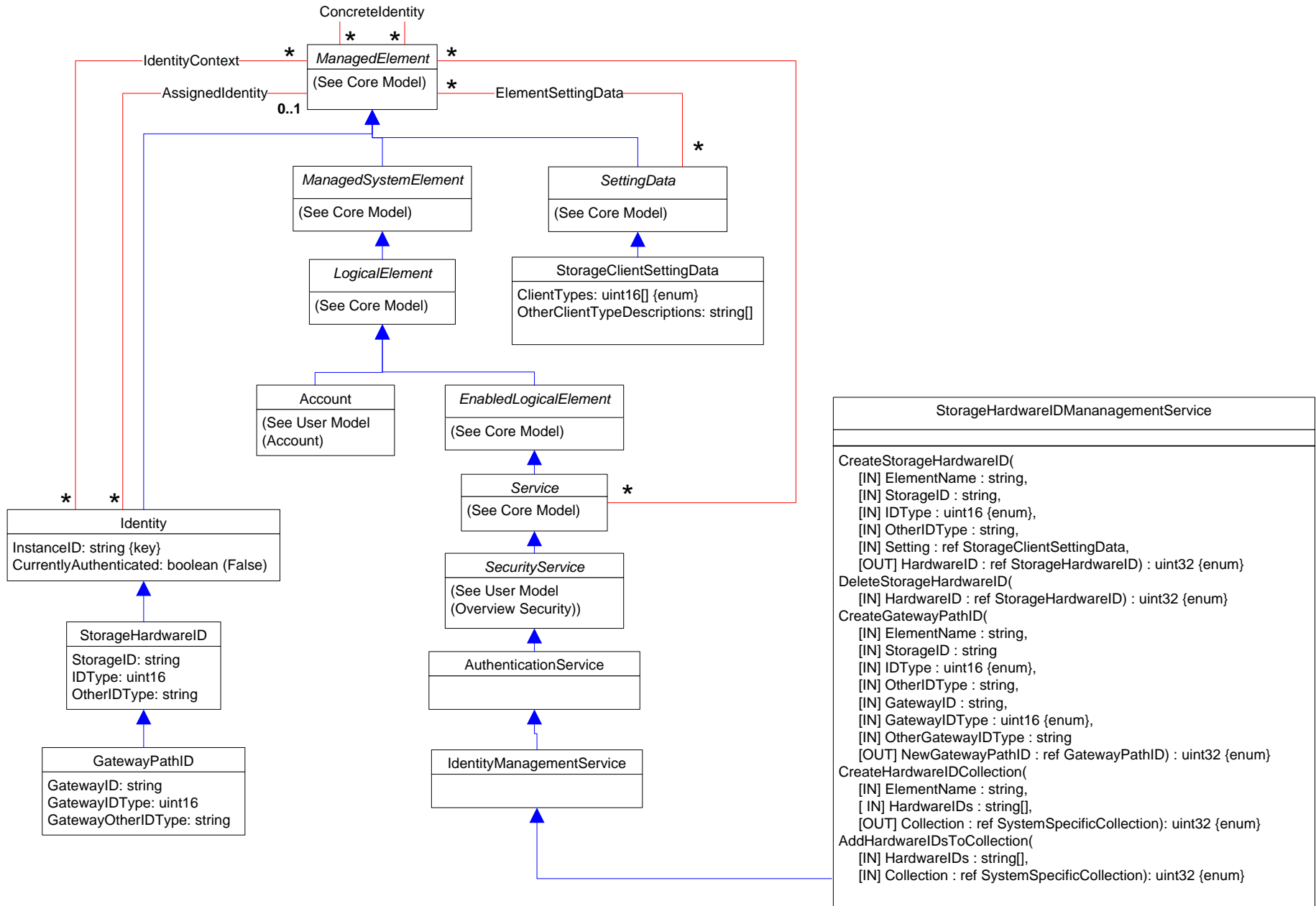


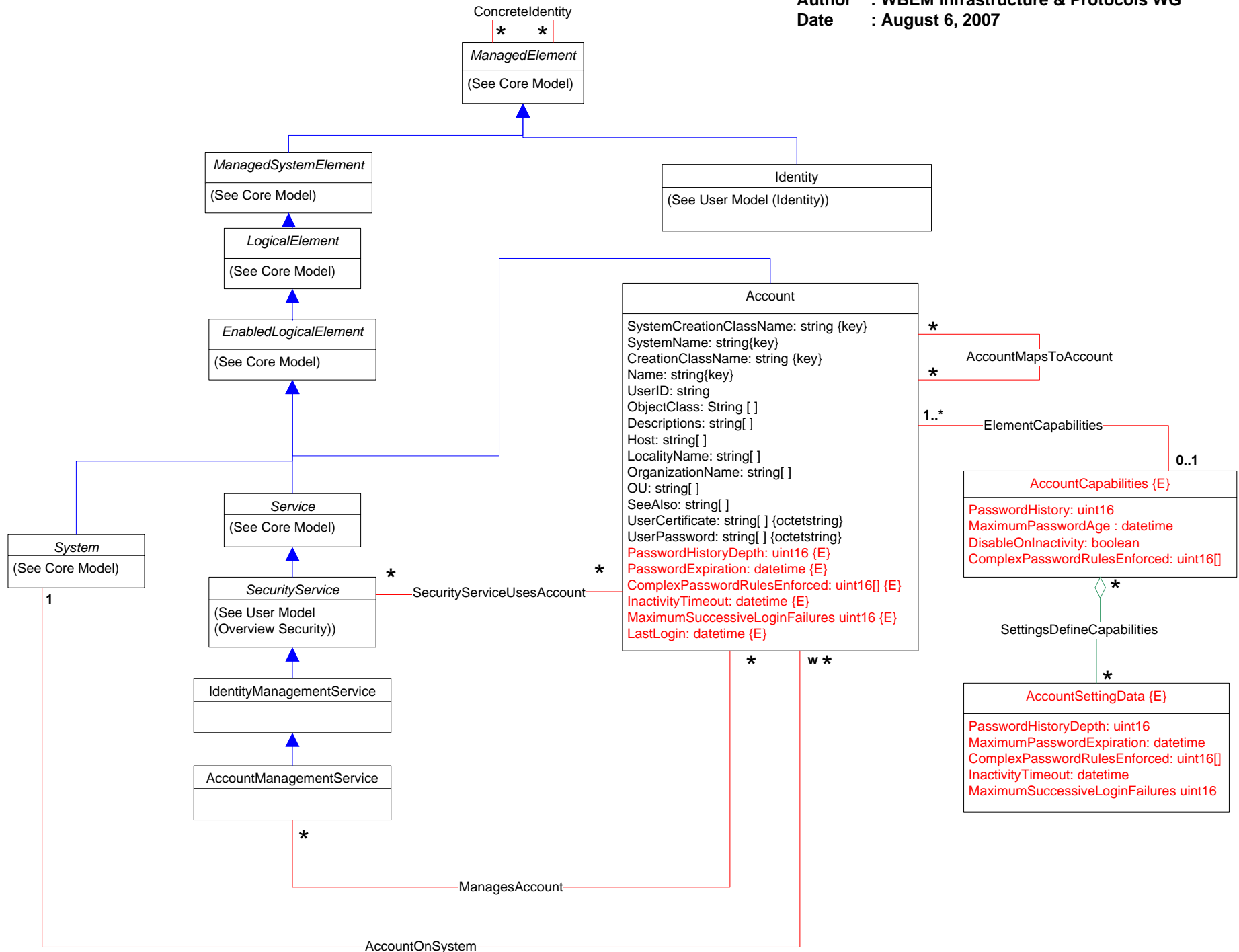


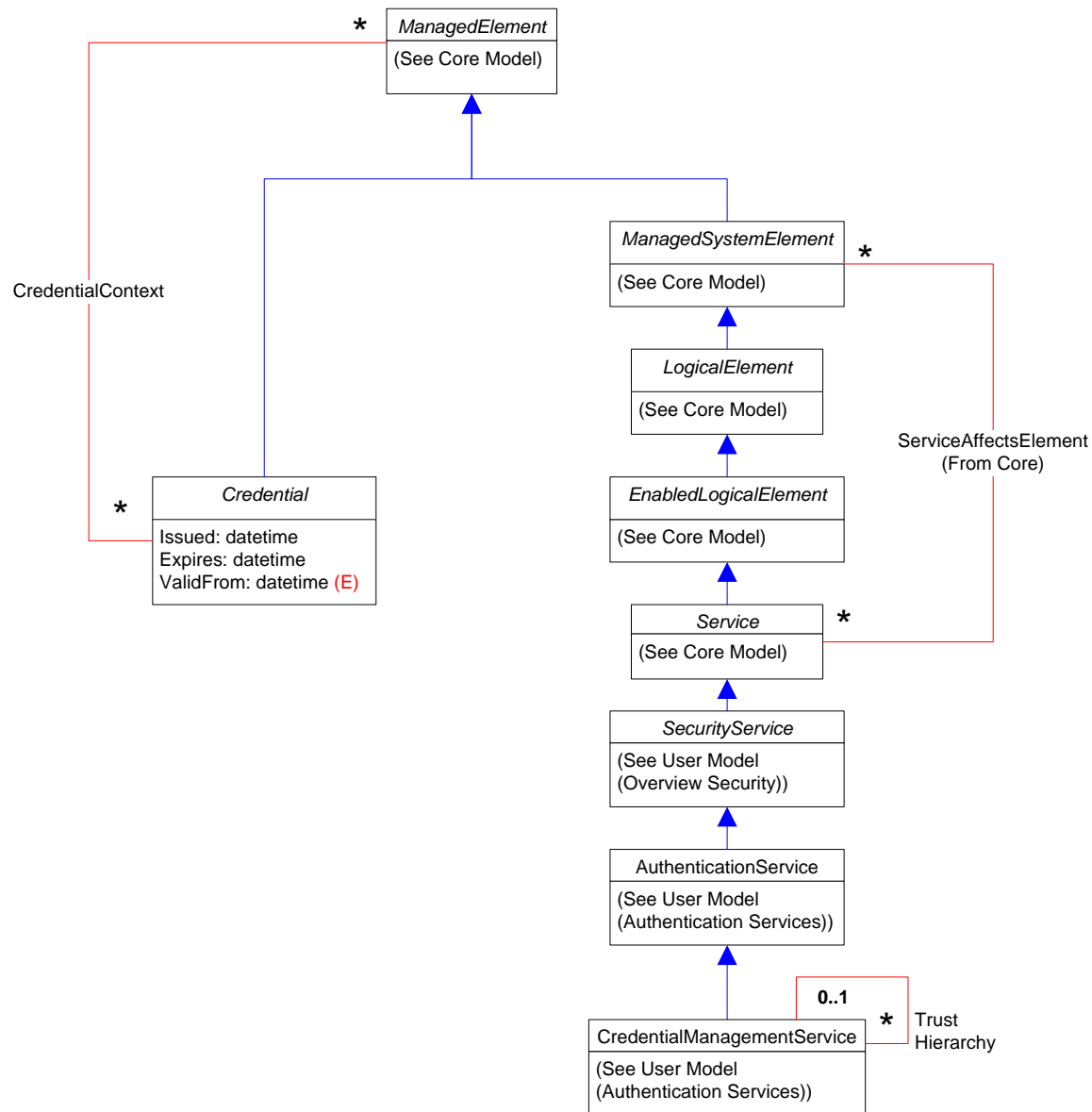


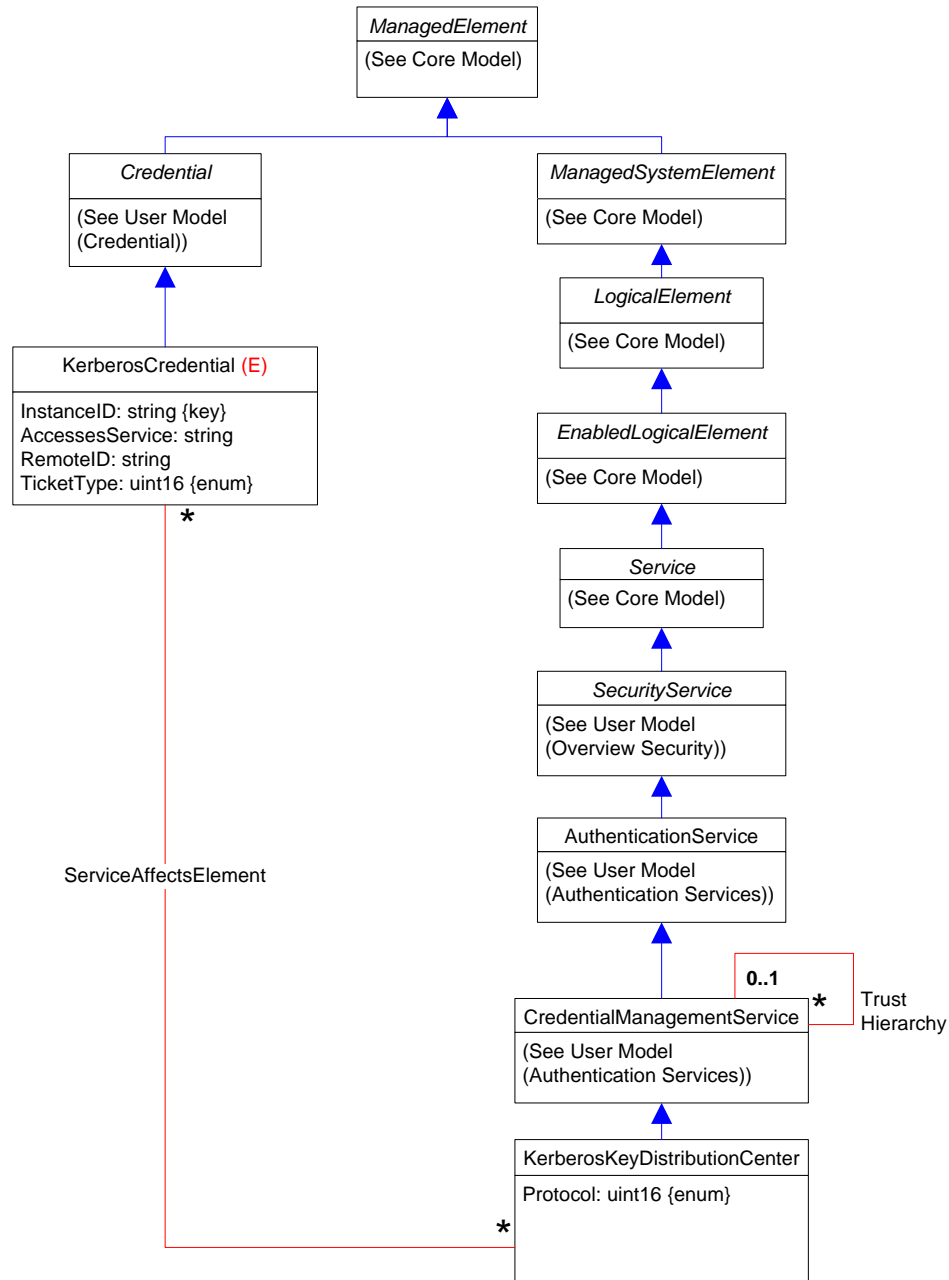


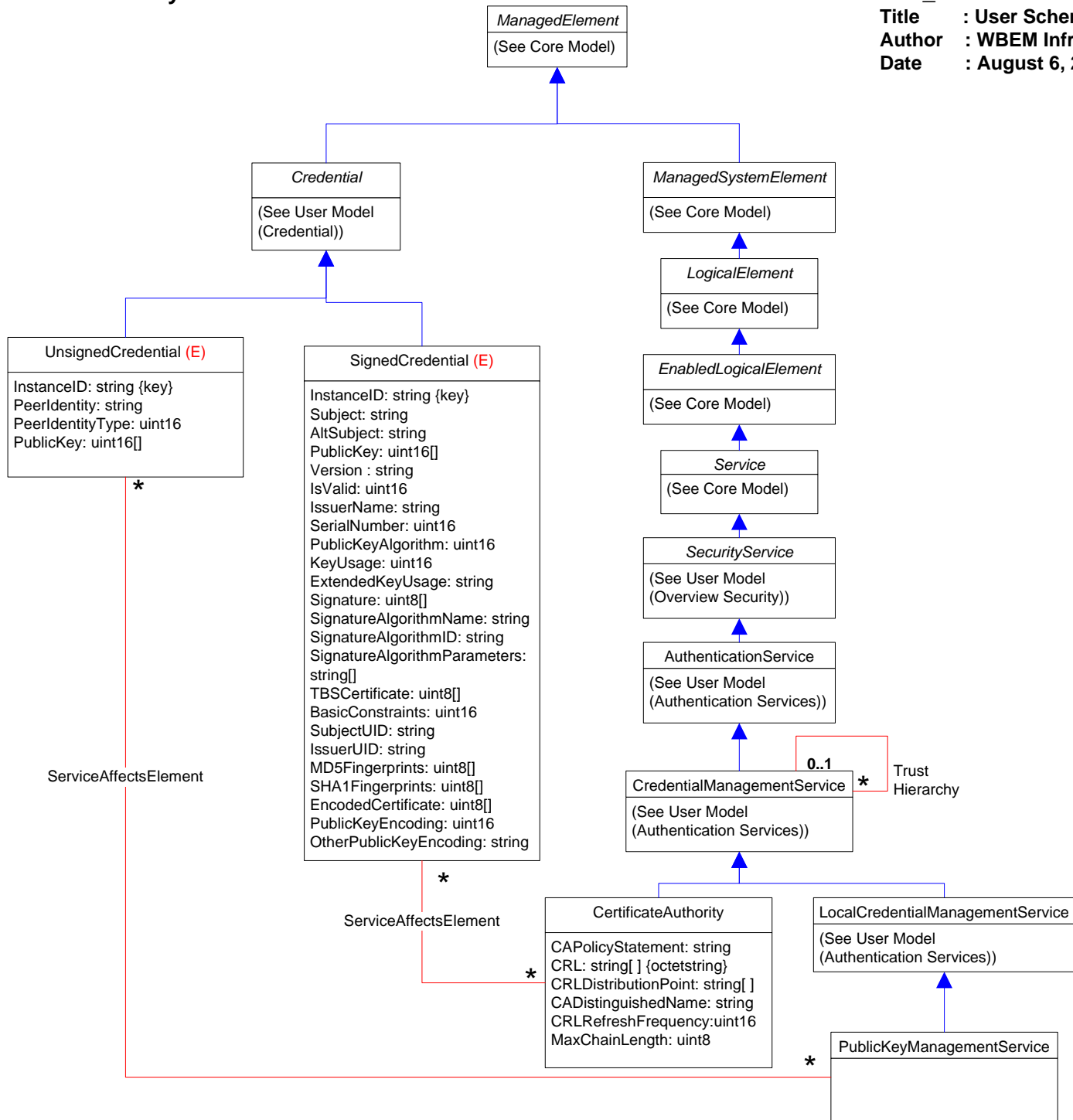




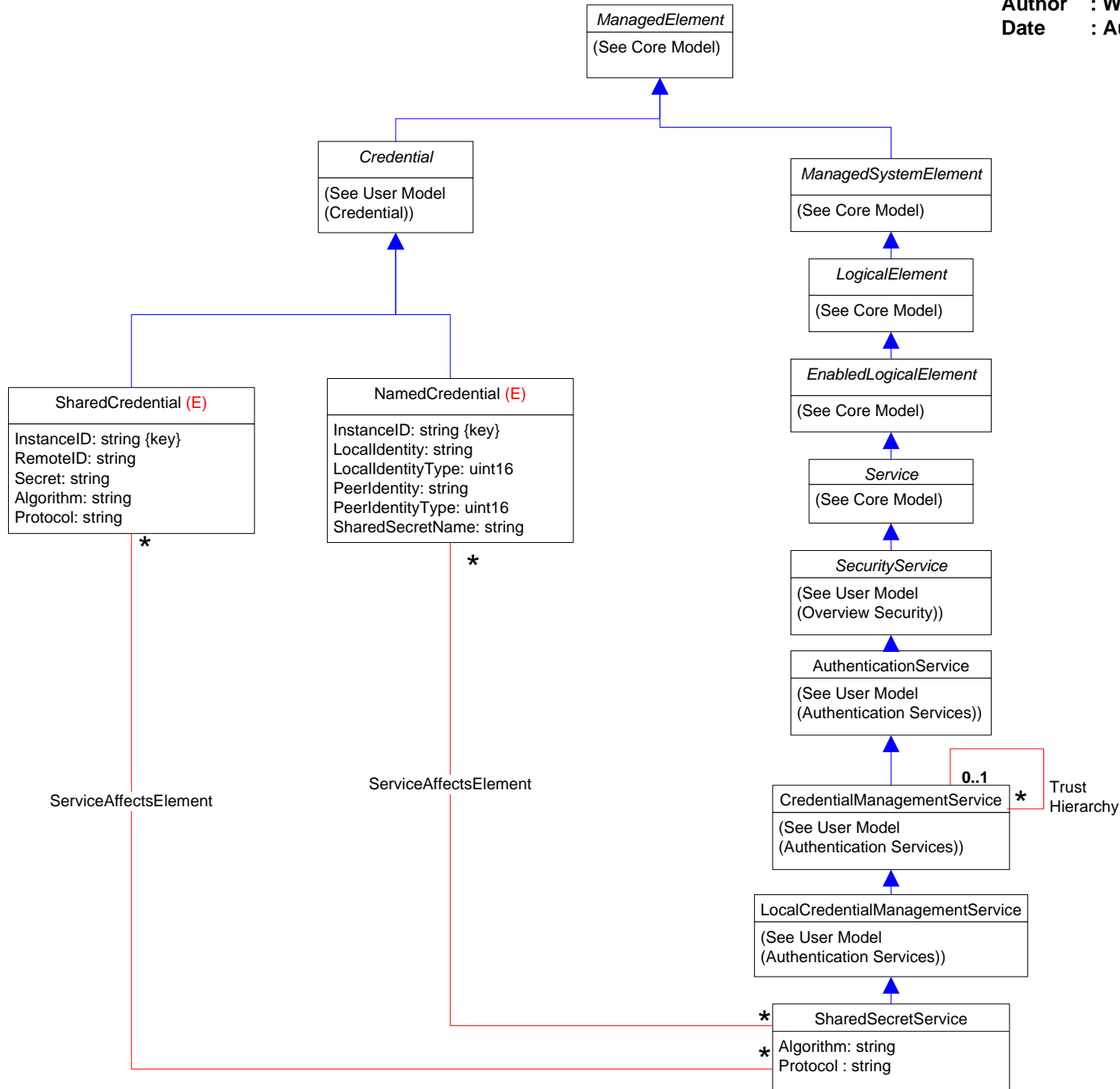


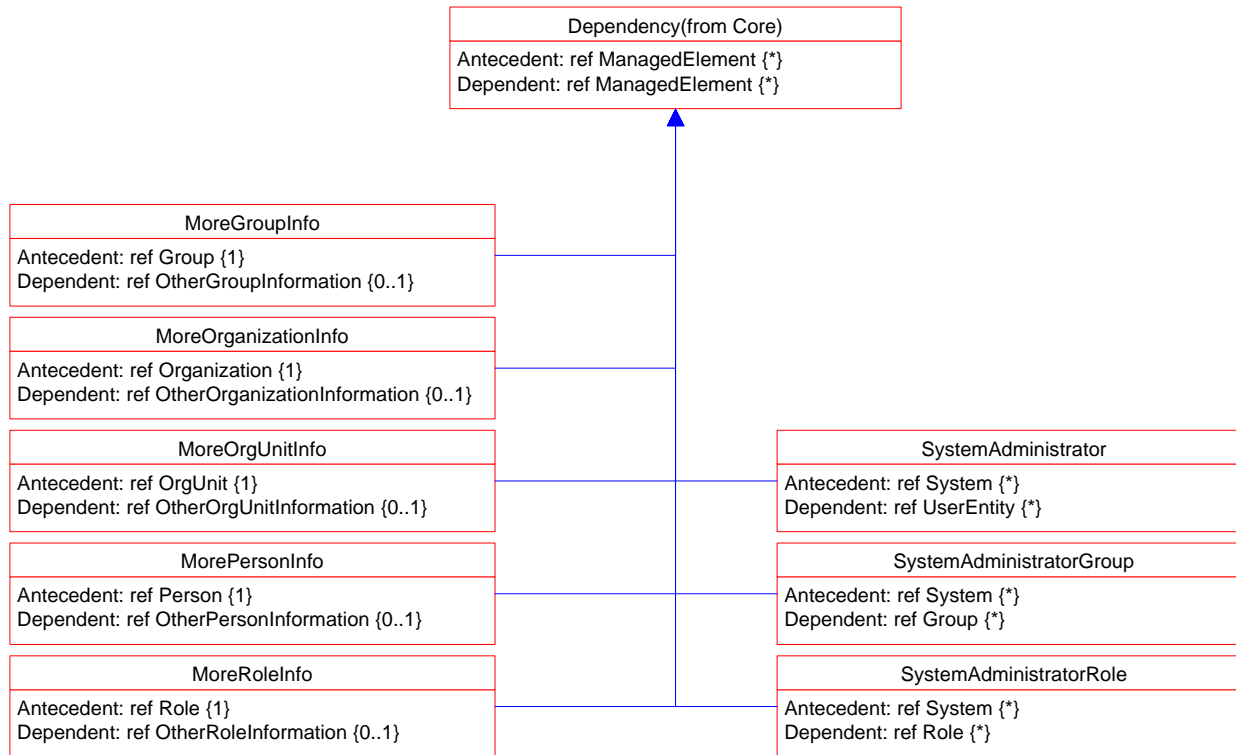


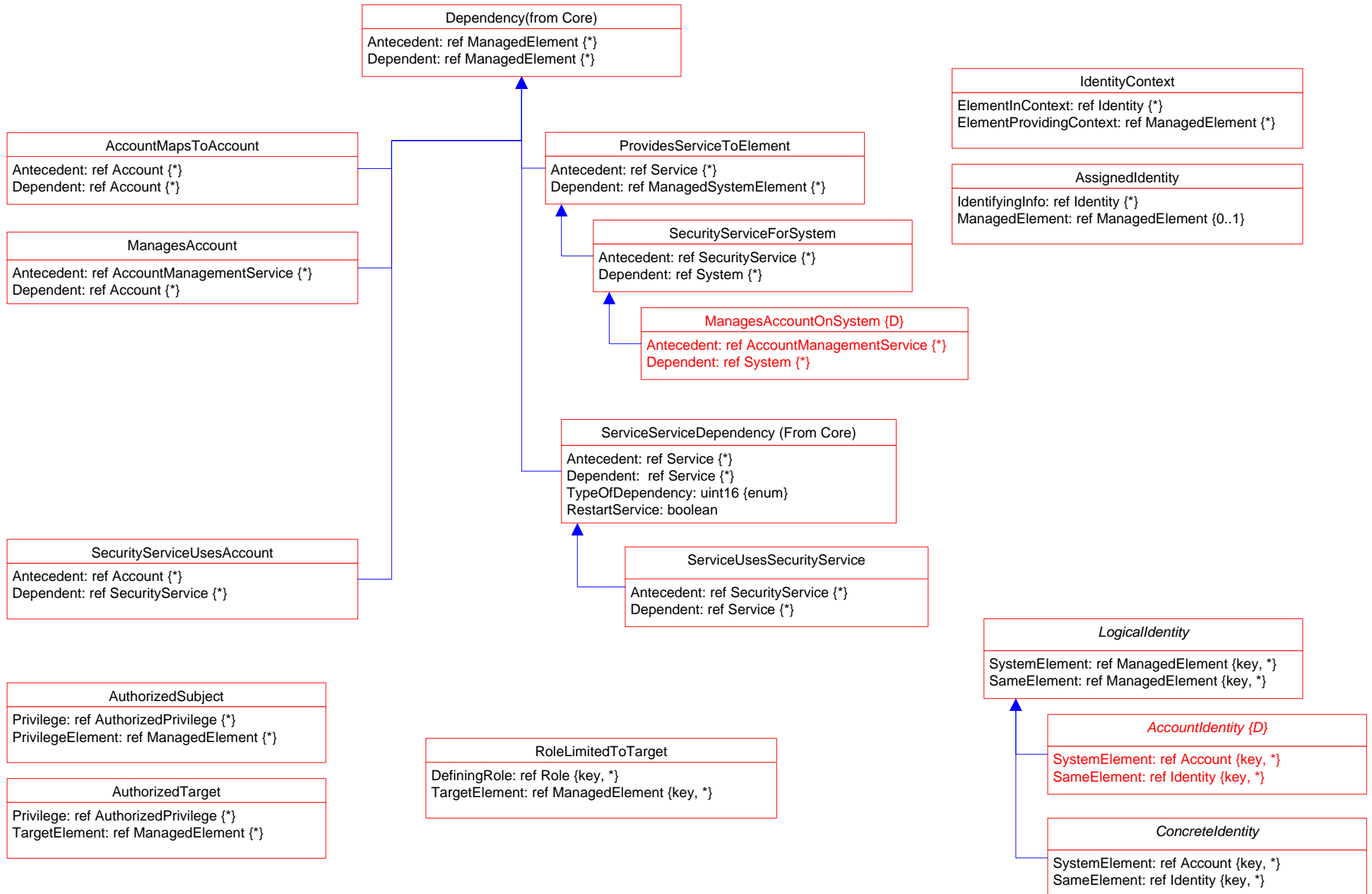


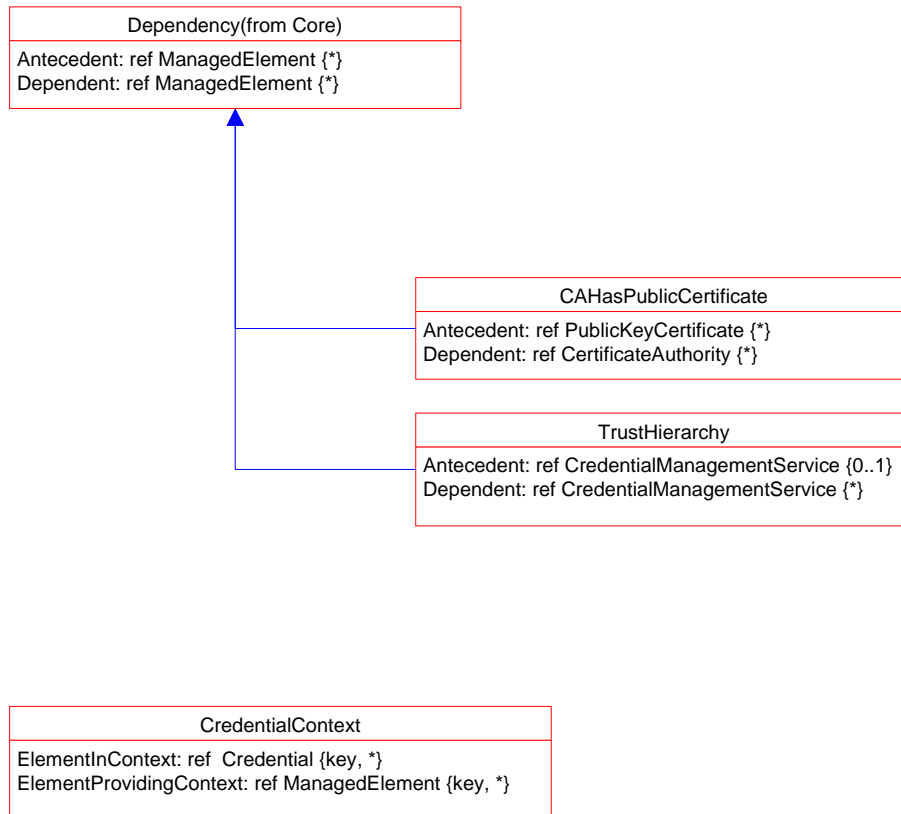


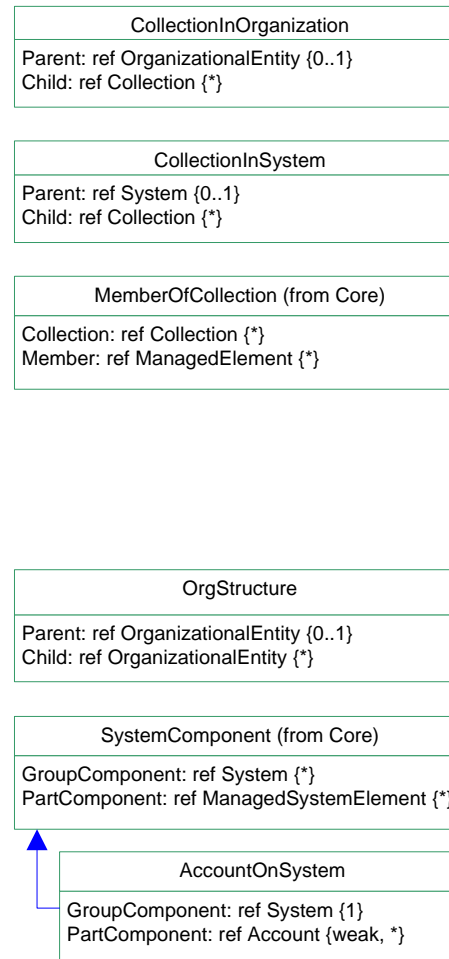


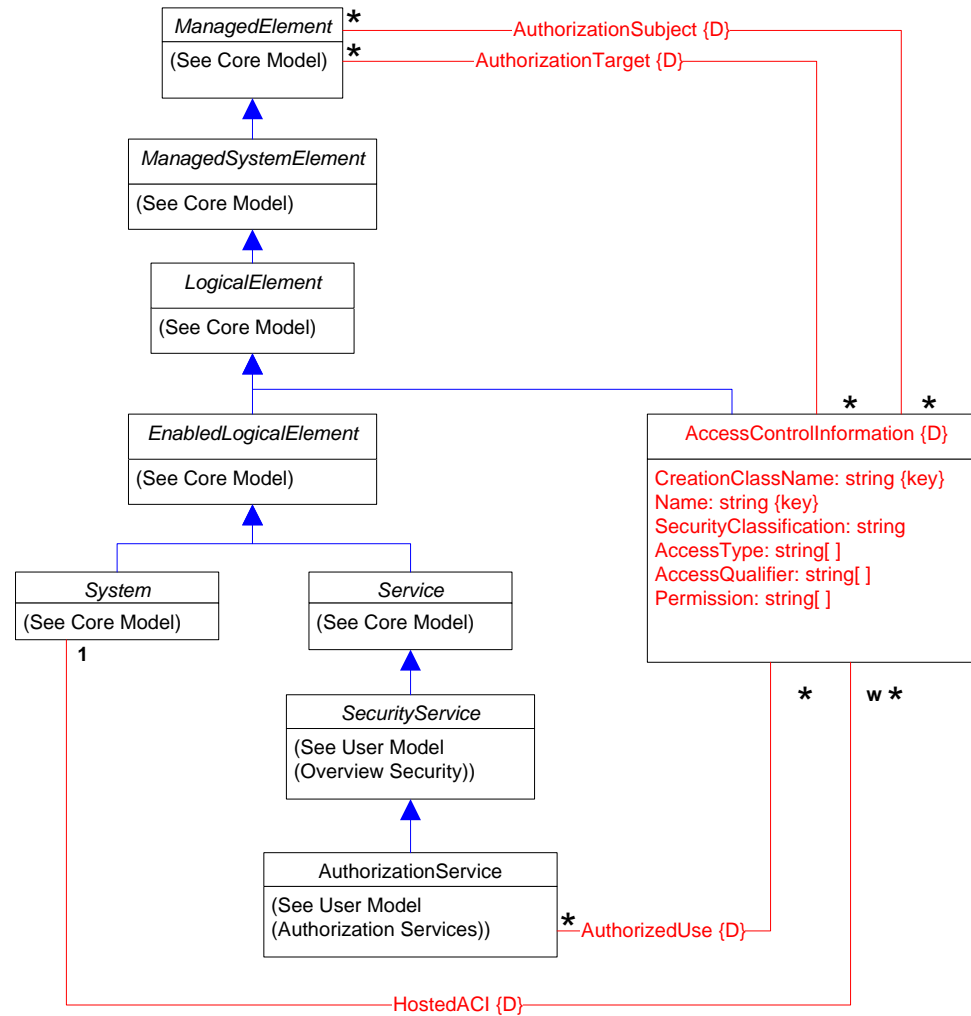


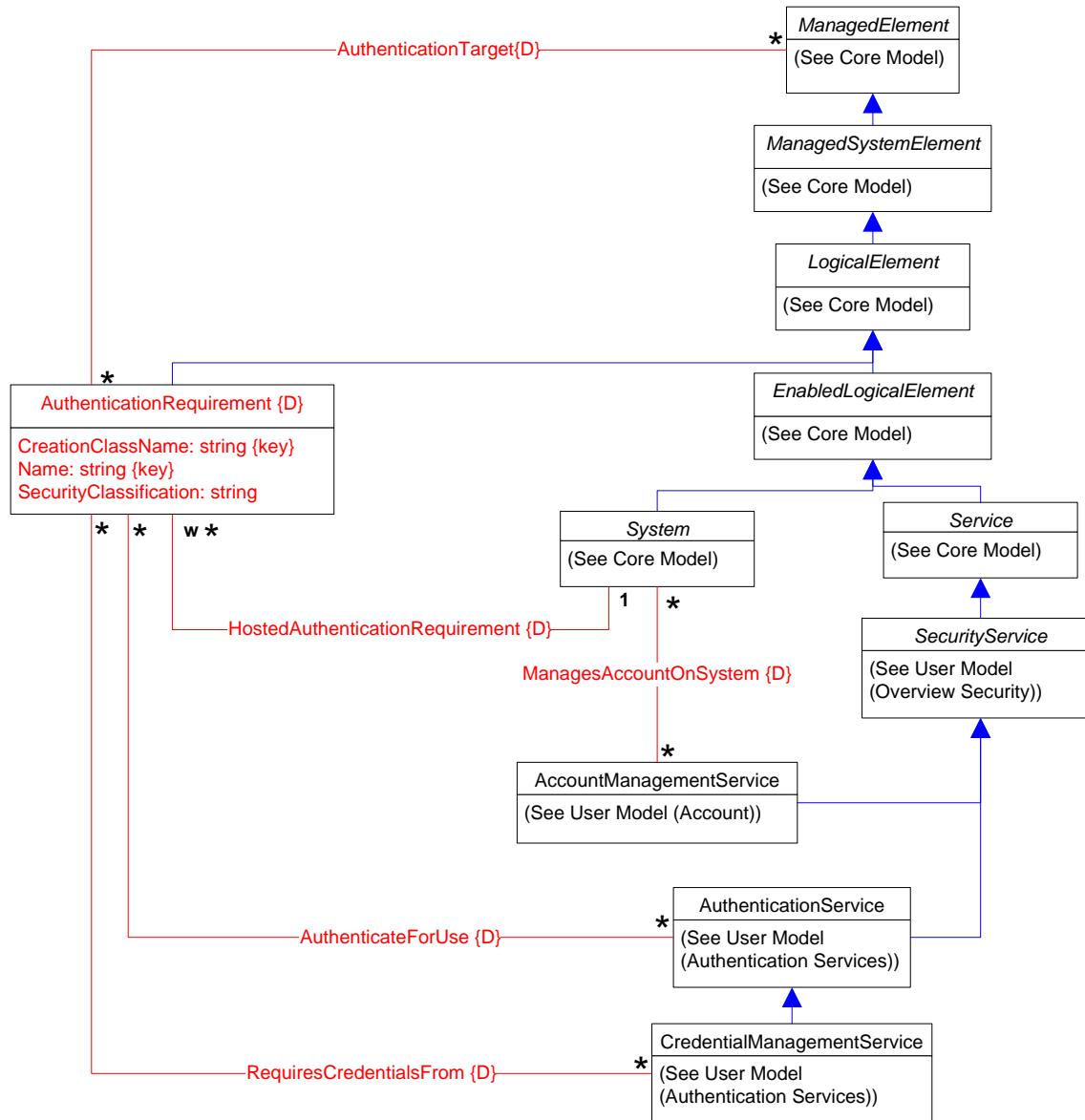


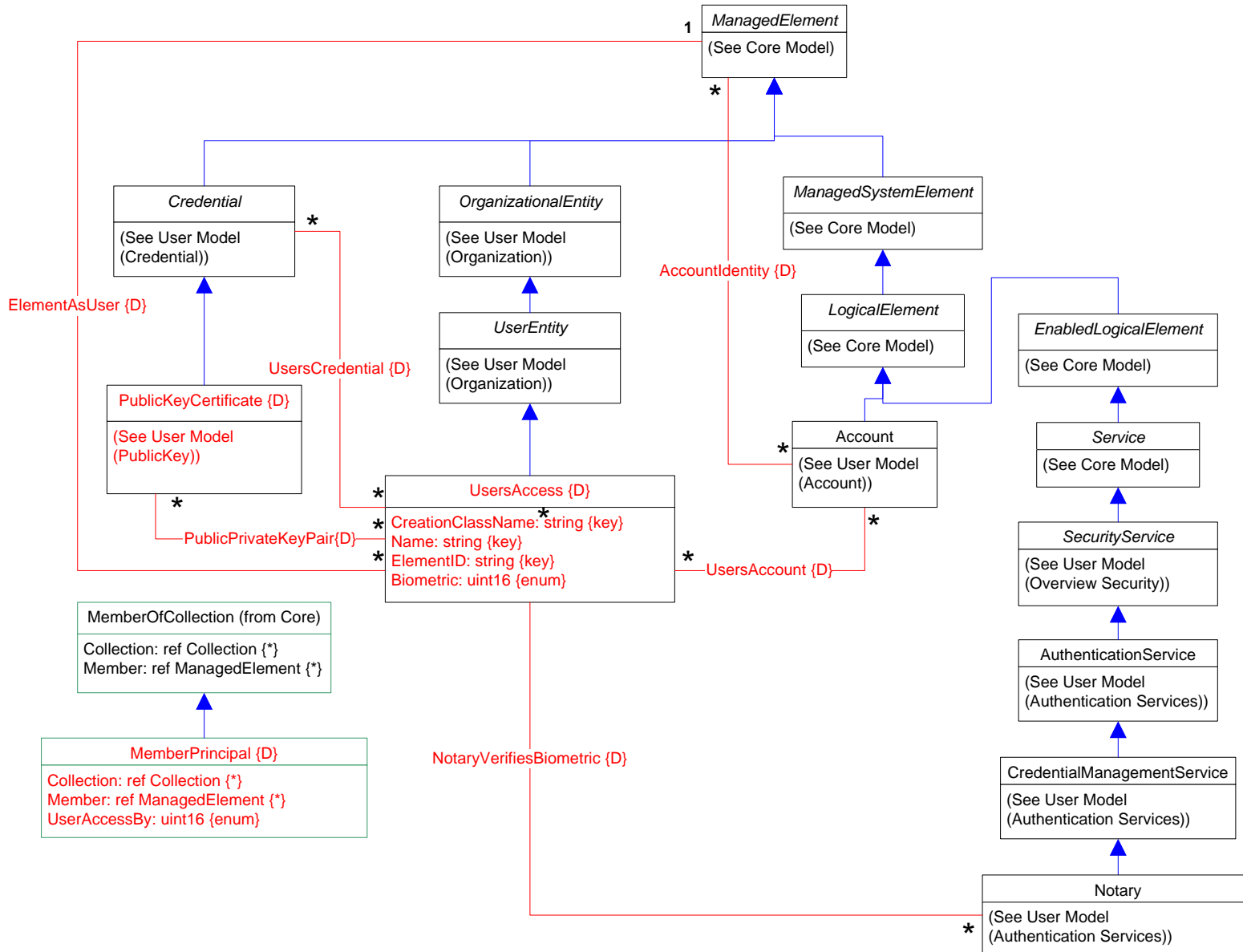




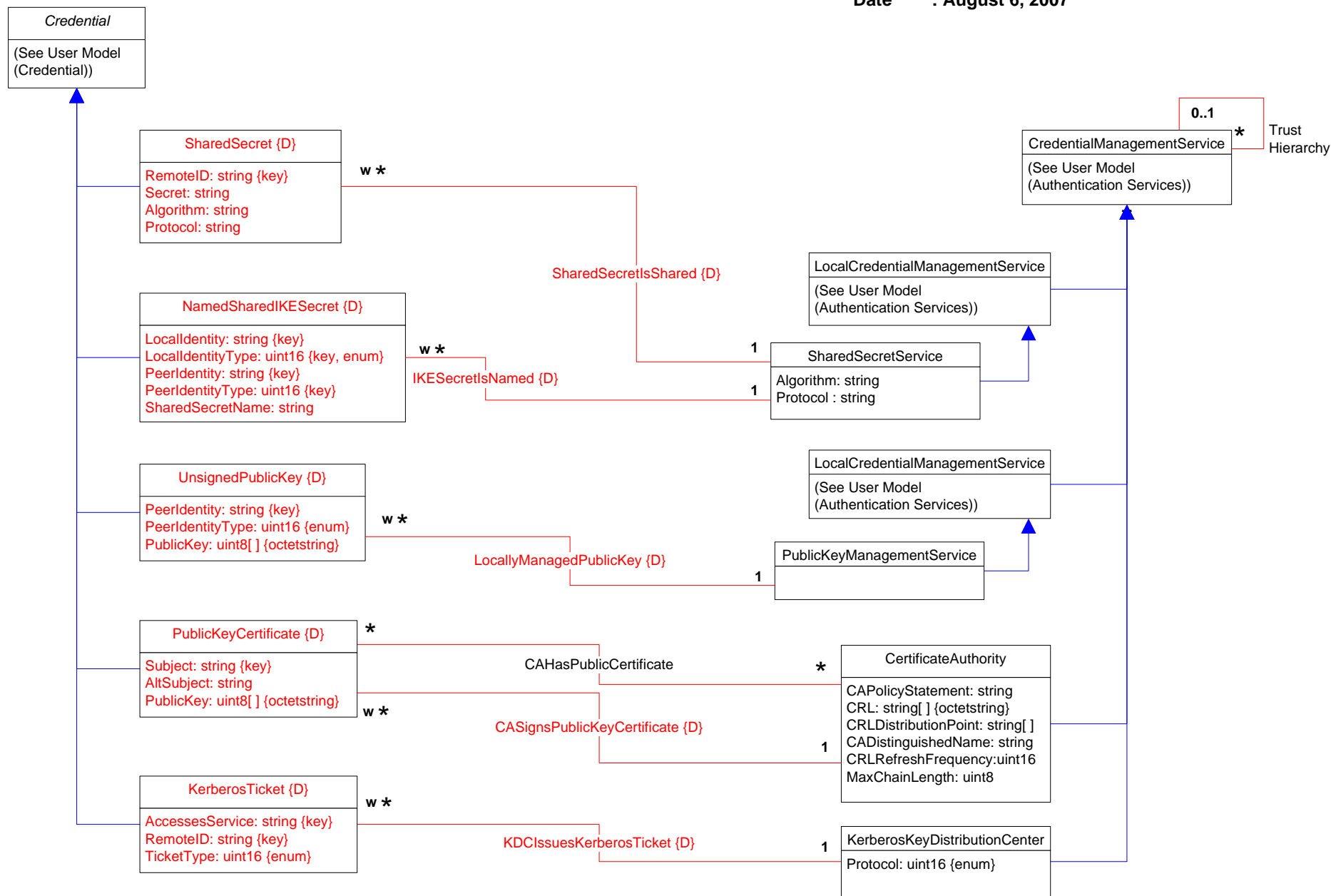


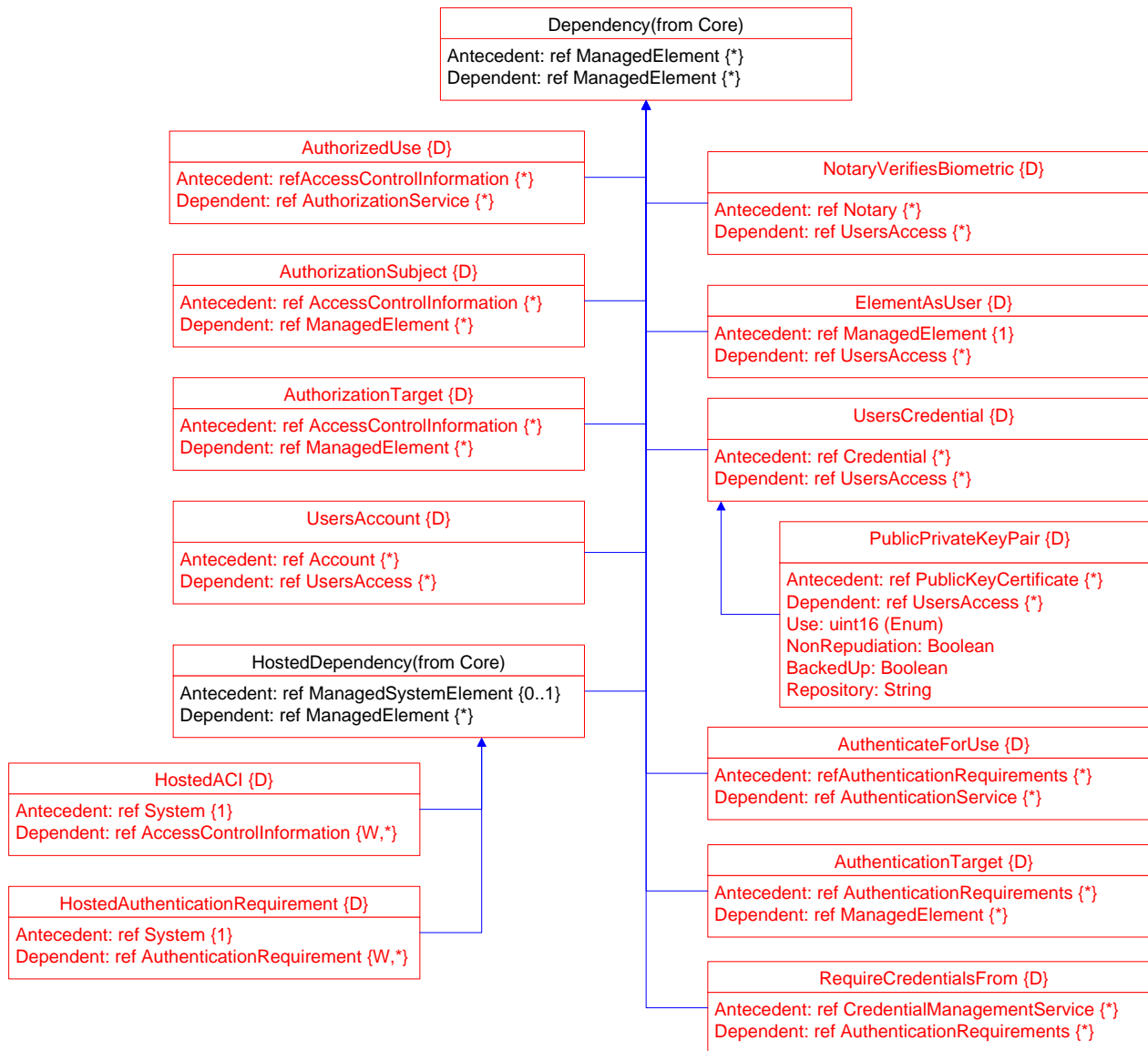


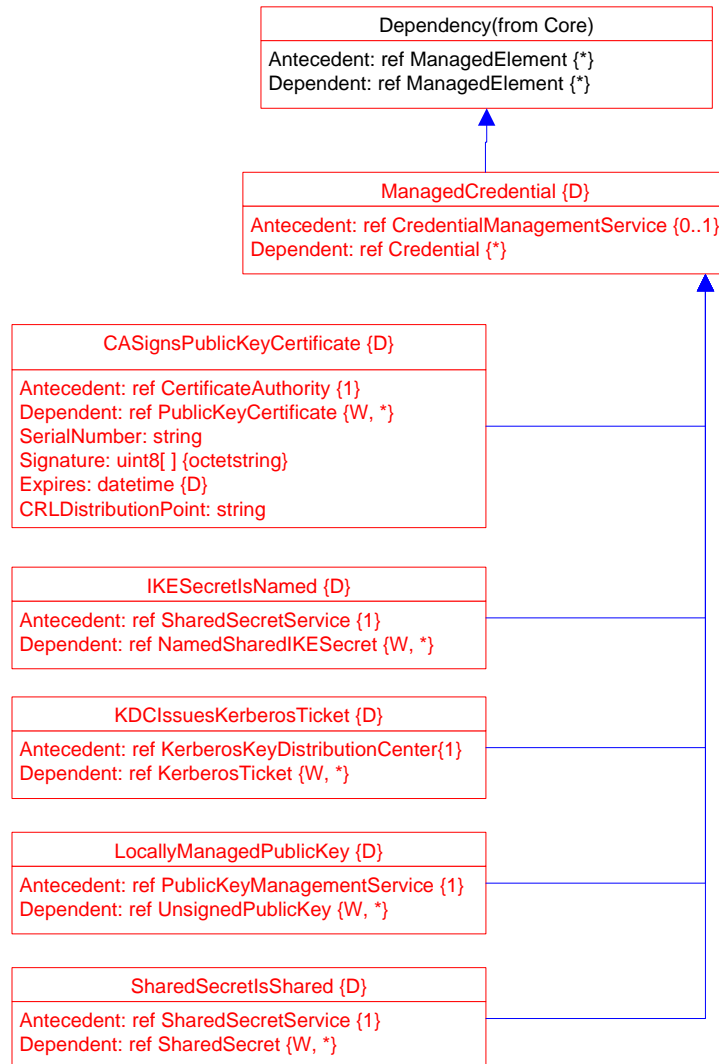












Title : User Schema v2.16

Author : WBEM Infrastructure & Protocols WG

Date : August 6, 2007

Version 2.9 Preliminary

- \* DMTFCR01222: Add CredentialContext
- \* DMTFCR01302: Add RoleLimitedToTarget
- \* DMTFCR01342: Add Privilege.QualifierFormats.SCSI Command
  - Add Privilege.RepresentsAuthorizationRights
  - Add PrivilegeManagementService.ChangeAccess()
  - Add PrivilegeManagementService.ShowAccess()
- \* DMTFCR01380 Clarification of CredentialContext

## Version 2.10:

### CIM\_AccountGroup

<change cr="DMTFCR01083" type = "new"> Add PrivilegeManagementCapabilities </change>

<change cr="DMTFCR01501" type = "new"> Create AccountGroup and Define relationship to ChangeAccess, ShowAccess, Roles, and authorizationPolicy. </change>

### CIM\_AccountIdentity

<change cr="DMTFCR01503" type = "deprecate"> Deprecate

AccountIdentity, SecurityServiceForSystem, ManagesAccountOnSystem, and ServiceUsesSecurityService </change>

### CIM\_CollectionInSystem

<change cr="DMTFCR01502" type = "deprecate"> Deprecated CollectionInSystem in favor of OwningCollectionElement </change>

<change cr="DMTFCR01145" type = "deprecate"> Deprecated CollectionInSystem in favor of HostedCollection </change>

### CIM\_Credential

<change cr="DMTFCR01514" type = "change"> Fix description of timestamp in Credential </change>

### CIM\_CredentialContext

<change cr="CIMCoreCR00750" type = "change"> Clarification of CredentialContext </change>

<change cr="DMTFCR01379" type = "new"> Add Credential Context </change>

<change cr="DMTFCR01222" type = "new"> Define a CredentialContext association </change>

### CIM\_GatewayPathID

<change cr="DMTFCR01299" type = "change"> Add iSCSI support to the enum of ID Types used for SCSI LUN Masking </change>

### CIM\_Group

<change cr="DMTFCR01515" type = "change"> Clarify intended use for LDAP, not general </change>

### CIM\_IdentityContext

<change cr="DMTFCR01380" type = "change"> Clarify IdentityContext cardinalities </change>

### CIM\_ManagesAccountOnSystem

<change cr="DMTFCR01503" type = "deprecate"> Deprecate AccountIdentity, SecurityServiceForSystem, ManagesAccountOnSystem, and ServiceUsesSecurityService </change>

### CIM\_Privilege

<change cr="DMTFCR01547" type = "change"> Fix enumeration conflict generated by DMTFCR01442 </change>

<change cr="DMTFCR01342" type = "change"> Change and Show Access Rights </change>

### PrivilegeManagementCapabilities

<change cr="DMTFCR01083" type = "new"> Add PrivilegeManagementCapabilities </change>

### CIM\_PrivilegeManagementService

<change cr="DMTFCR01547" type = "change"> Fix enumeration conflict generated by DMTFCR01442 </change>

<change cr="DMTFCR01342" type = "change"> Change and Show Access Rights </change>

<change cr="DMTFCR01083" type = "change"> Add PrivilegeManagementCapabilities </change>

### CIM\_PrivilegePropagationRule

<change cr="DMTFCR01342" type = "new"> Change and Show Access Rights </change>

### CIM\_SecurityServiceForSystem

<change cr="DMTFCR01503" type = "deprecate"> Deprecate AccountIdentity, SecurityServiceForSystem, ManagesAccountOnSystem, and ServiceUsesSecurityService </change>

### CIM\_ServiceUsesSecurityService

<change cr="DMTFCR01503" type = "deprecate"> Deprecate AccountIdentity, SecurityServiceForSystem, ManagesAccountOnSystem, and ServiceUsesSecurityService </change>

### CIM\_StorageHardwareID

<change cr="DMTFCR01299" type = "change"> Add iSCSI support to the enum of ID Types used for SCSI LUN Masking </change>

### CIM\_StorageHardwareIDManagementService

<change cr="DMTFCR01299" type = "change"> Add iSCSI support to the enum of ID Types used for SCSI LUN Masking </change>

**Title : User Schema v2.16**

**Author : WBEM Infrastructure & Protocols WG**

**Date : August 6, 2007**

**Version 2.13:**

**Change:**

**CIM\_StorageHardwareID**

**Version 2.14:**

**Change:**

**CIM\_Account**

**CIM\_AssignedIdentity**

**CIM\_StorageHardwareIDManagementService**

**CIM\_RoleBasedAuthorizationService**

**CIM\_Role**

**New:**

**CIM\_AccountCapabilities**

**CIM\_AccountManagementCapabilities**

**CIM\_AccountSettingData**

**CIM\_ElementSecuritySensitivity**

**CIM\_IdentityManagementService**

**CIM\_IdentitySecurityClearance**

**CIM\_OrgEntityManagementService**

**CIM\_PrivilegeManagementCapabilities**

**CIM\_SecuritySensitivity**

Version 2.15:

New:

CIM\_RoleBasedManagementCapabilities



**Version 2.16:**

**Change:**

**CIM\_AccountManagementService**

**New:**

**CIM\_RemotIdentity**

**CIM\_KerberosCredential**

**CIM\_NamedCredential**

**CIM\_SharedCredential**

**CIM\_SignedCredential**

**CIM\_UnsignedCredential**

**Deprecated:**

**CIM\_CASignsPublicKeyCertificate**

**CIM\_IKESecretIsNamed**

**CIM\_KDCIssuesKerberosTicket**

**CIM\_KerberosTicket**

**CIM\_LocallyManagedPublicKey**

**CIM\_ManagedCredential**

**CIM\_NamedSharedIKESecret**

**CIM\_PublicKeyCertificate**

**CIM\_SharedSecretIsShared**

**CIM\_UnsignedPublicKey**

**CIM\_SharedSecret**