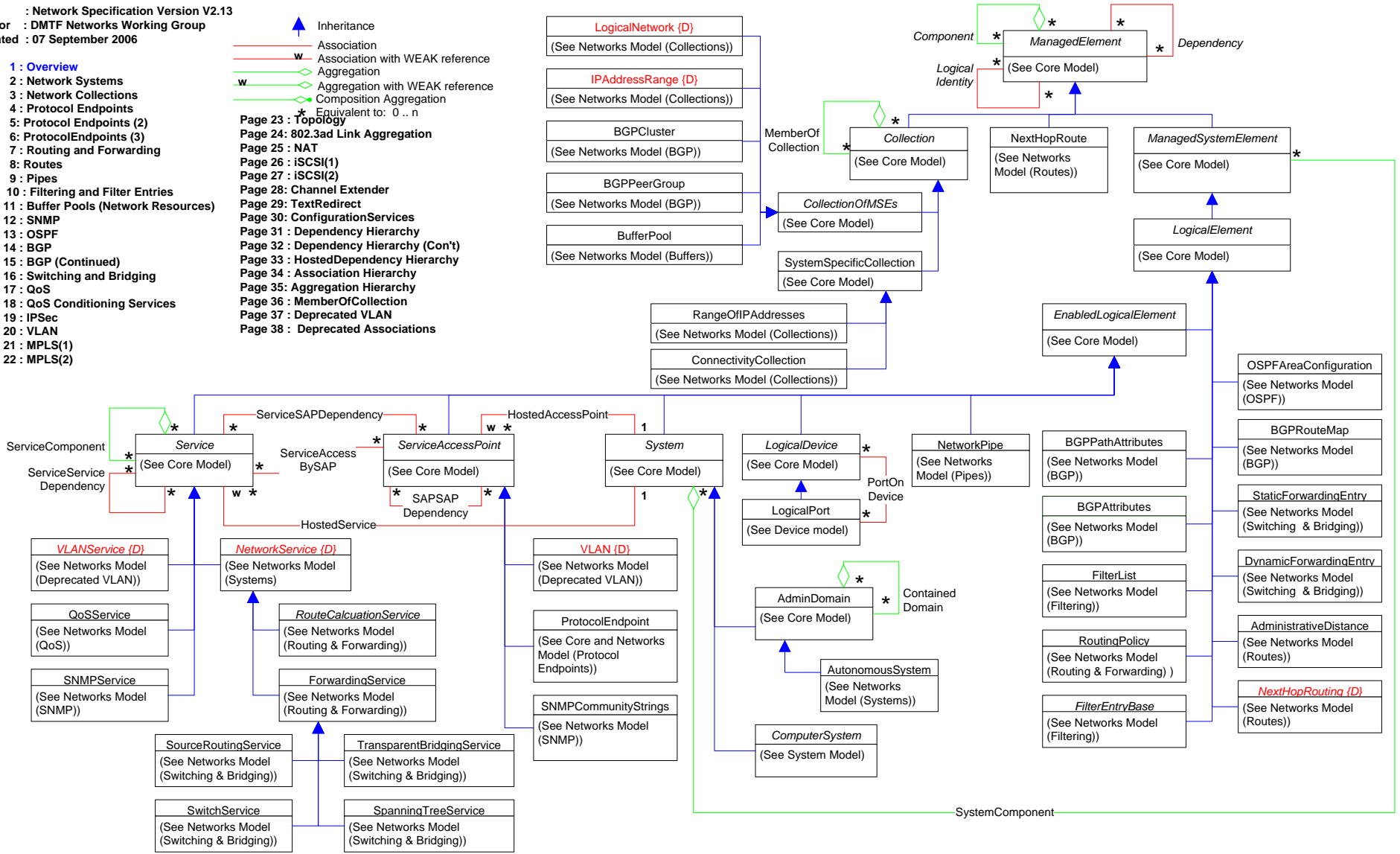









Page 1 : Overview

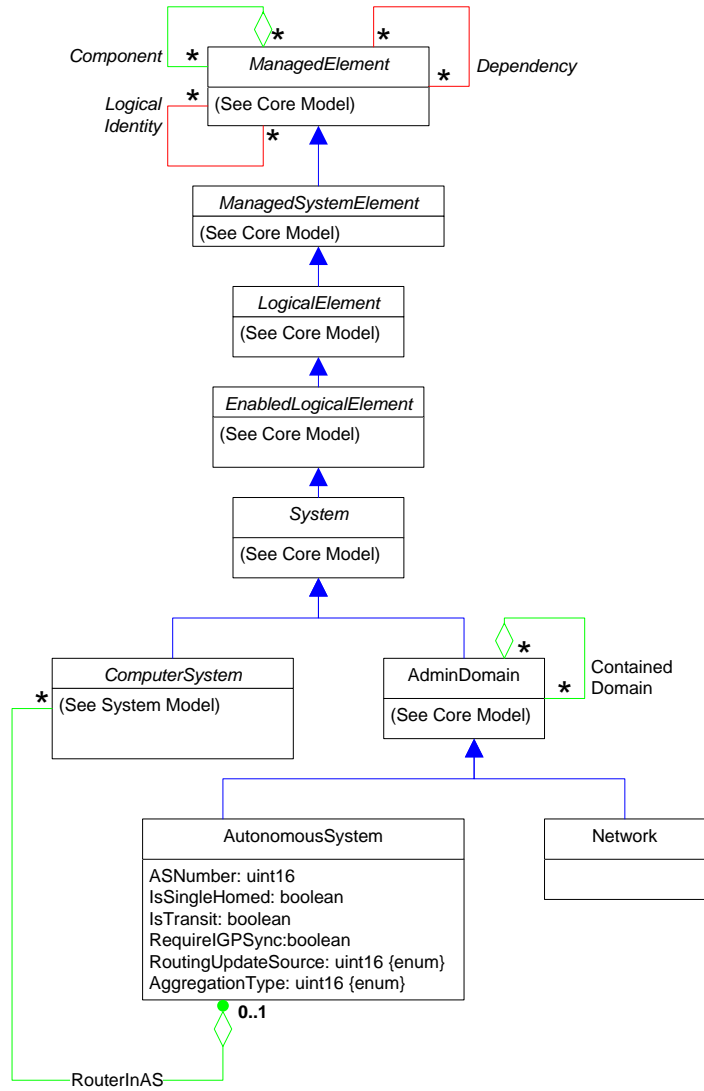
- Page 2 : Network Systems
- Page 3 : Network Collections
- Page 4 : Protocol Endpoints
- Page 5 : Protocol Endpoints (2)
- Page 6 : ProtocolEndpoints (3)
- Page 7 : Routing and Forwarding
- Page 8 : Routes
- Page 9 : Pipes
- Page 10 : Filtering and Filter Entries
- Page 11 : Buffer Pools (Network Resources)
- Page 12 : SNMP
- Page 13 : OSPF
- Page 14 : BGP
- Page 15 : BGP (Continued)
- Page 16 : Switching and Bridging
- Page 17 : QoS
- Page 18 : QoS Conditioning Services
- Page 19 : IPsec
- Page 20 : VLAN
- Page 21 : MPLS(1)
- Page 22 : MPLS(2)

- ▲ Inheritance
- Association
- w Association with WEAK reference
- ◇ Aggregation
- w◇ Aggregation with WEAK reference
- ◇◇ Composition Aggregation
- \* Equivalent to: 0..n
- Page 23 : Topology
- Page 24 : 802.3ad Link Aggregation
- Page 25 : NAT
- Page 26 : iSCSI(1)
- Page 27 : iSCSI(2)
- Page 28 : Channel Extender
- Page 29 : TextRedirect
- Page 30 : ConfigurationServices
- Page 31 : Dependency Hierarchy
- Page 32 : Dependency Hierarchy (Con't)
- Page 33 : HostedDependency Hierarchy
- Page 34 : Association Hierarchy
- Page 35 : Aggregation Hierarchy
- Page 36 : MemberOfCollection
- Page 37 : Deprecated VLAN
- Page 38 : Deprecated Associations




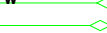





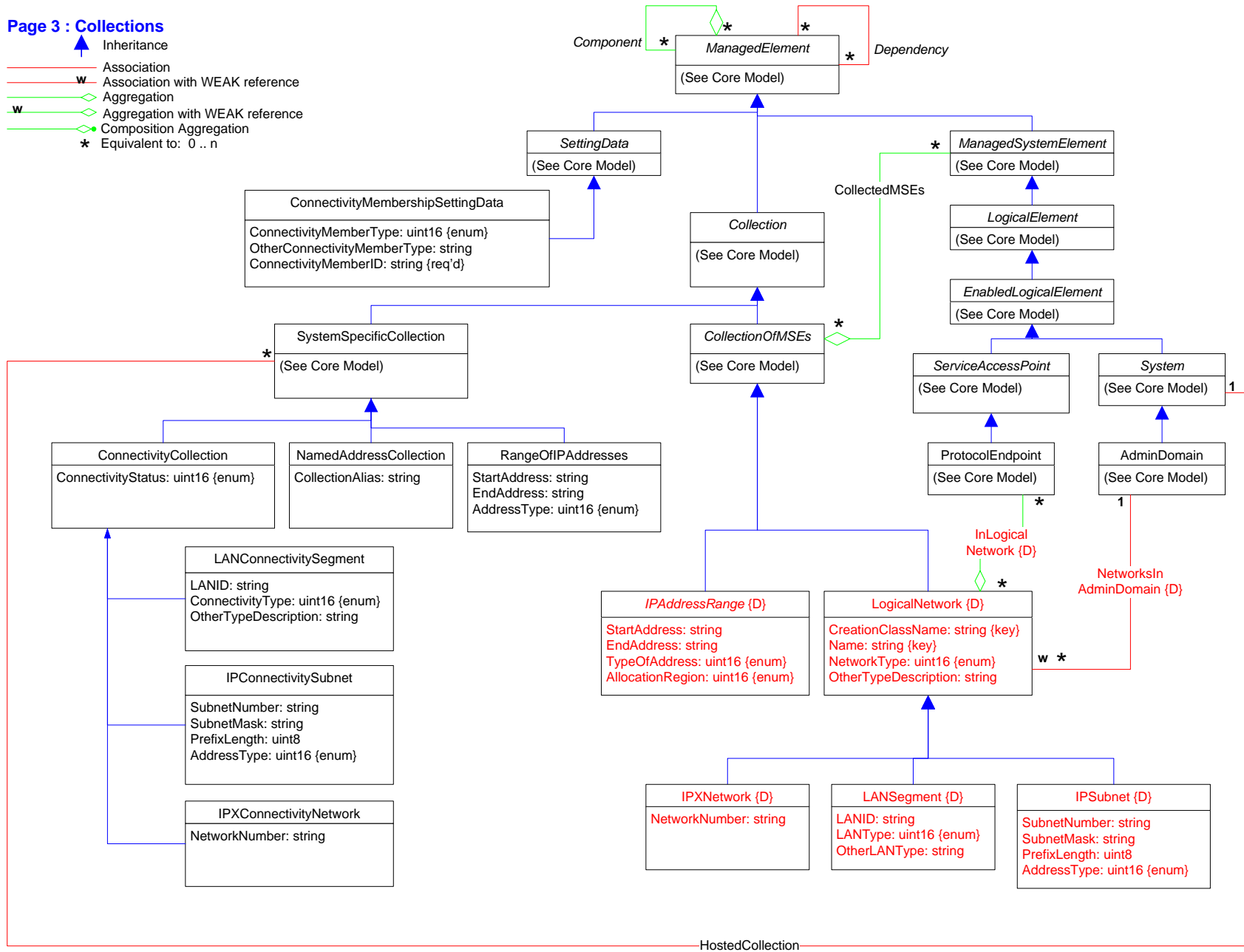
Page 2 : Network Systems

-  Inheritance
-  Association
-  Association with WEAK reference
-  Aggregation
-  Aggregation with WEAK reference
-  Composition Aggregation
-  Equivalent to: 0..n



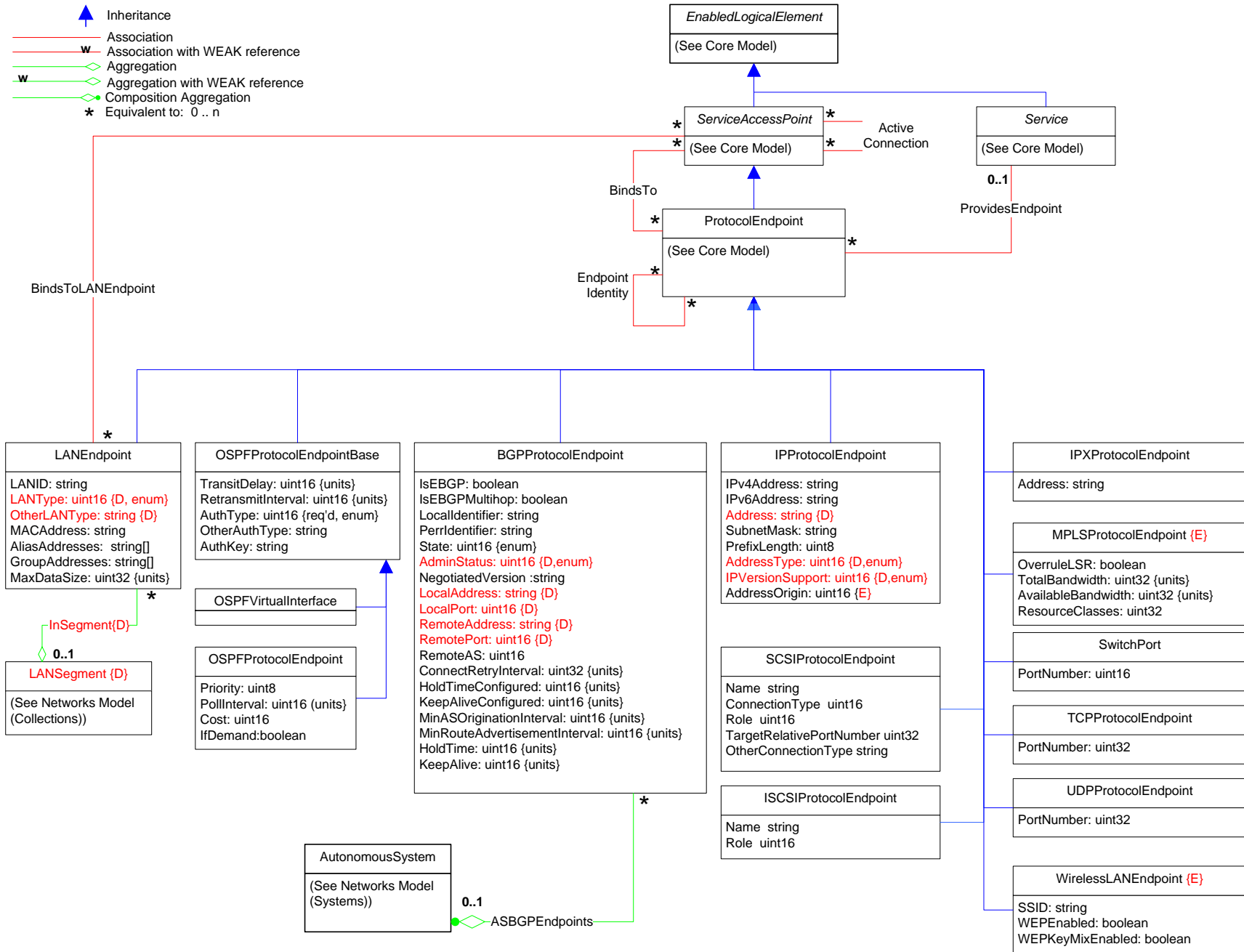
Page 3 : Collections

-  Inheritance
-  Association
-  Association with WEAK reference
-  Aggregation
-  Aggregation with WEAK reference
-  Composition Aggregation
-  Equivalent to: 0..n

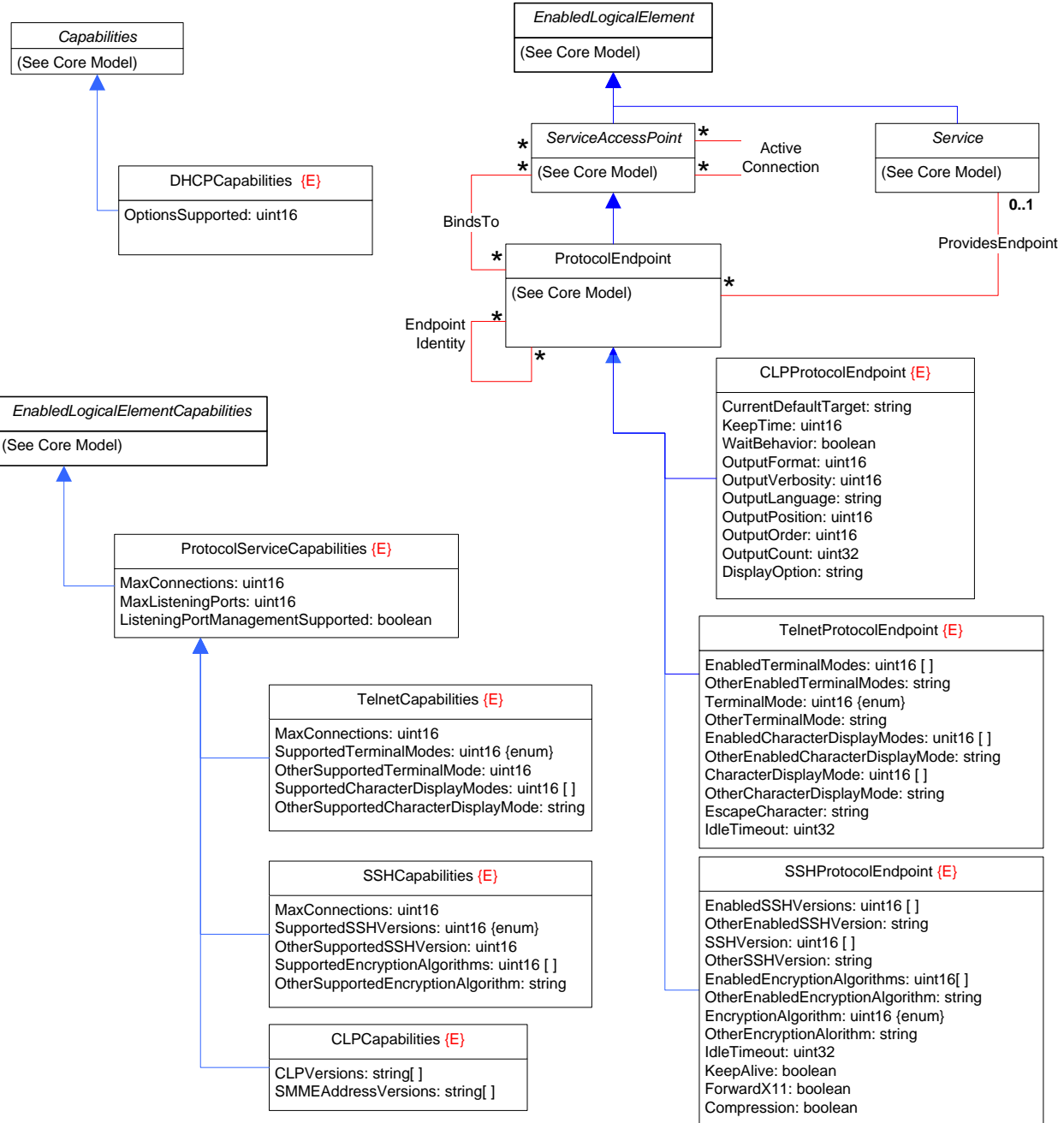
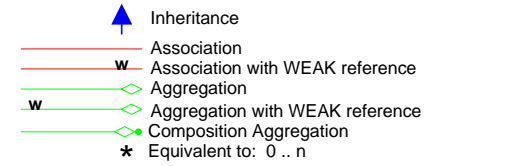


Page 4 : Protocol Endpoints








- Inheritance
- Association
- Association with WEAK reference
- Aggregation
- Aggregation with WEAK reference
- Composition Aggregation
- Equivalent to: 0..n

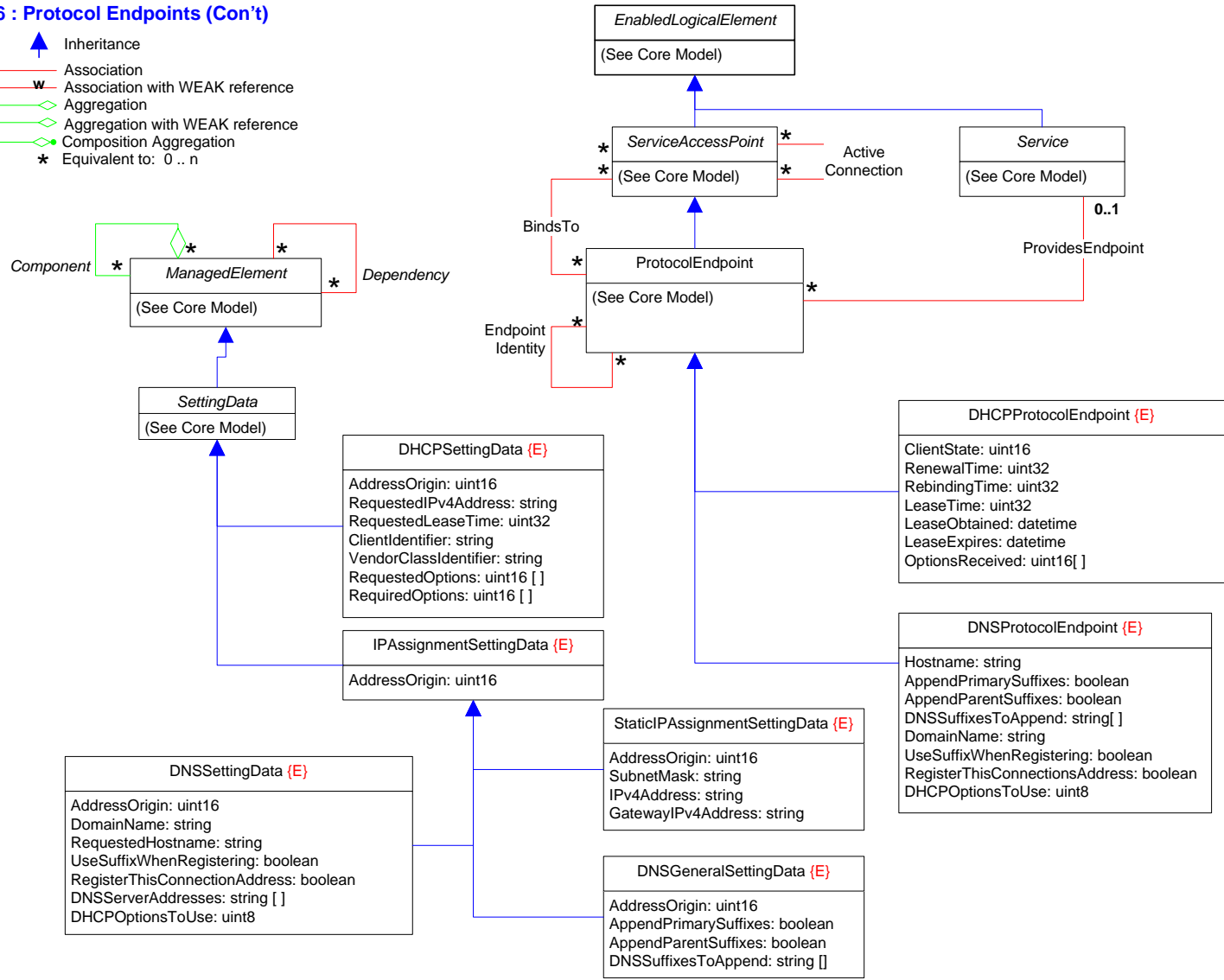


Page 5 : Protocol Endpoints (Con't)

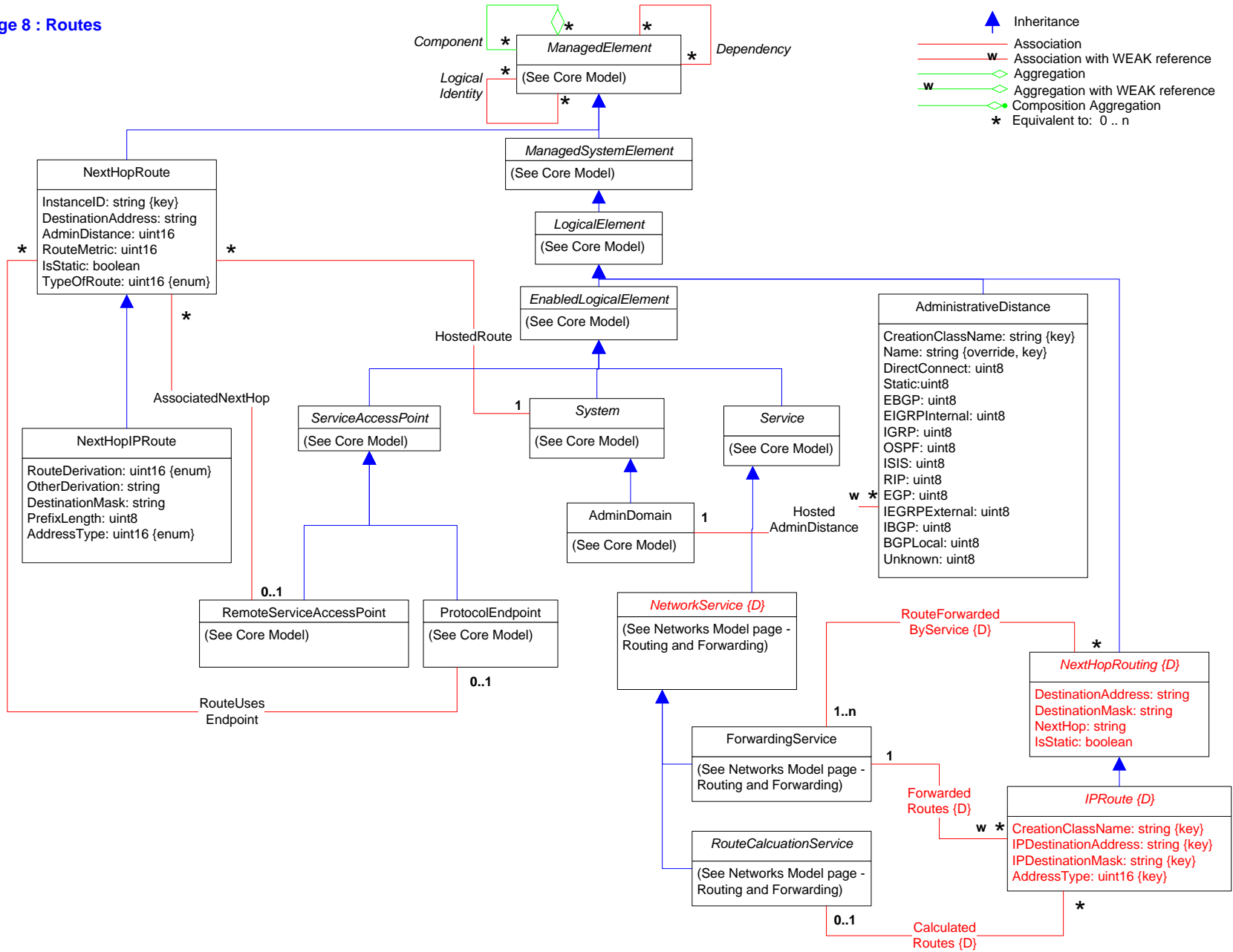


Page 6 : Protocol Endpoints (Con't)








-  Inheritance
-  Association
-  Association with WEAK reference
-  Aggregation
-  Aggregation with WEAK reference
-  Composition Aggregation
-  Equivalent to: 0..n

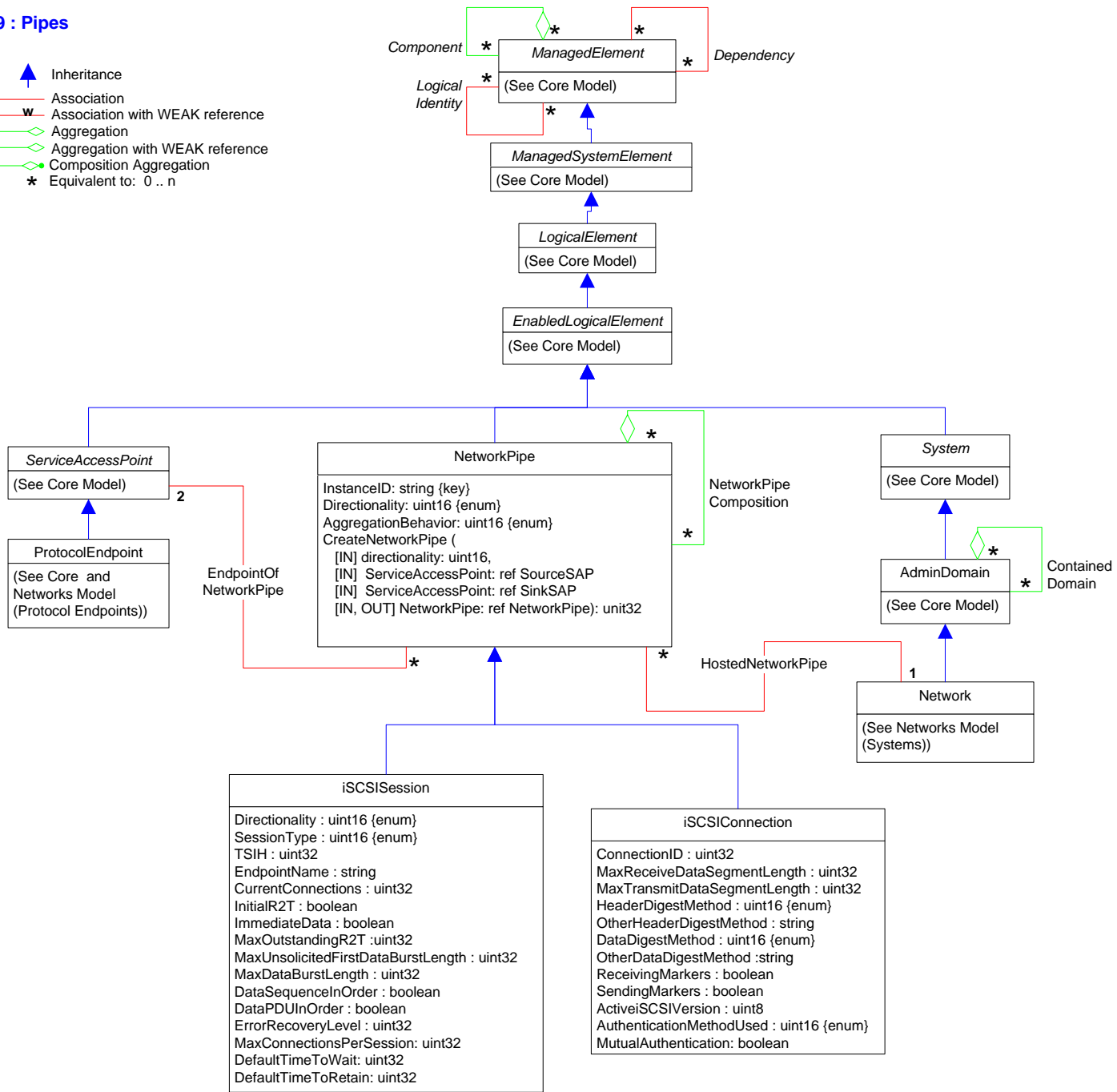













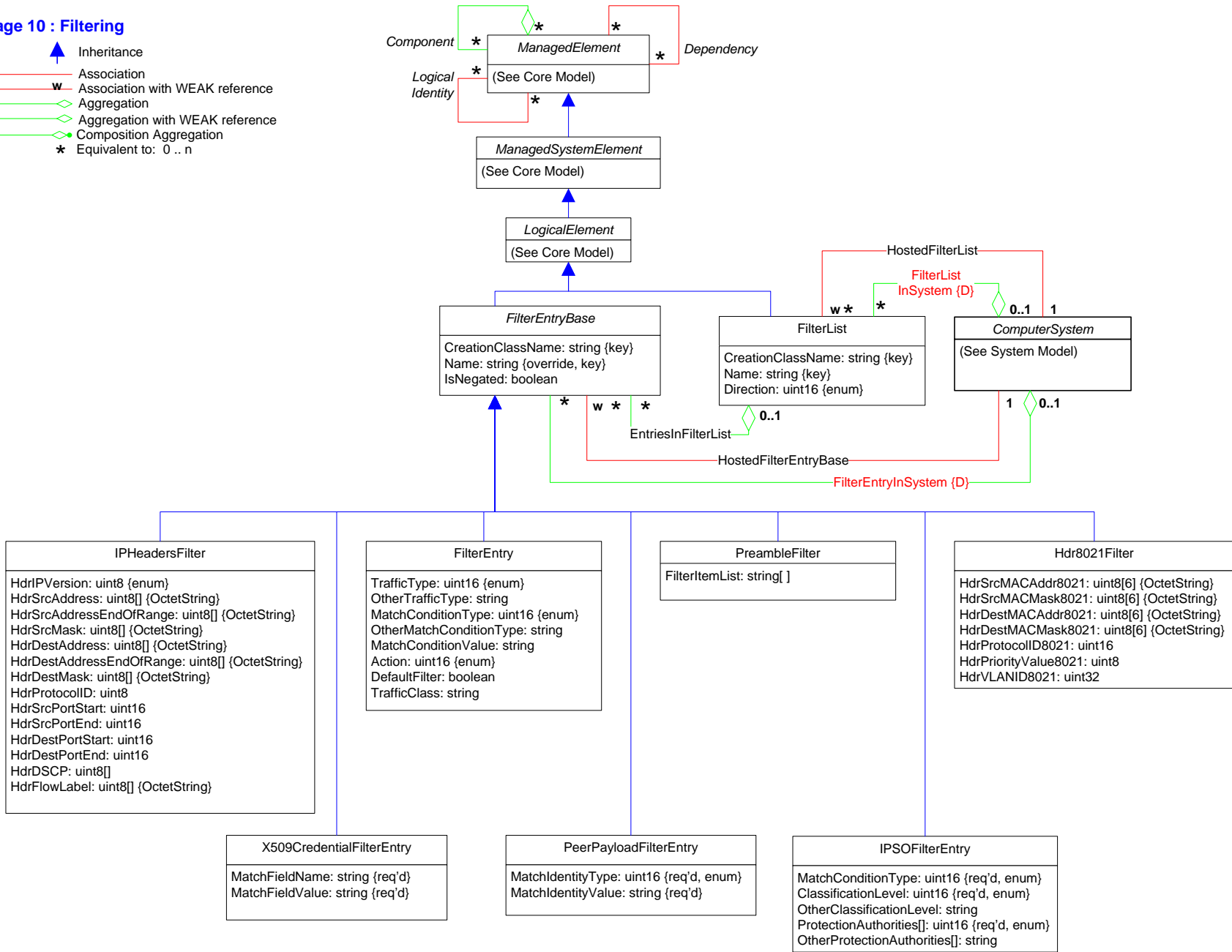


-  Inheritance
-  Association
-  Association with WEAK reference
-  Aggregation
-  Aggregation with WEAK reference
-  Composition Aggregation
-  Equivalent to: 0..n










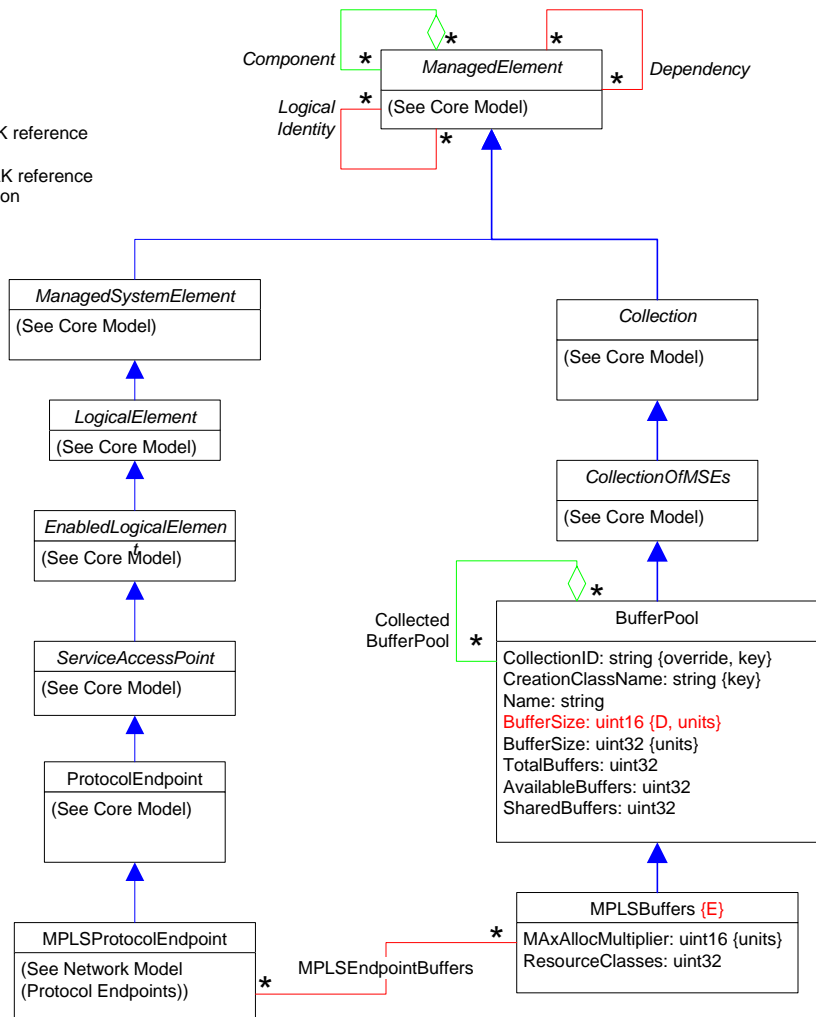
Page 10 : Filtering

-  Inheritance
-  Association
-  Association with WEAK reference
-  Aggregation
-  Aggregation with WEAK reference
-  Composition Aggregation
-  Equivalent to: 0 .. n










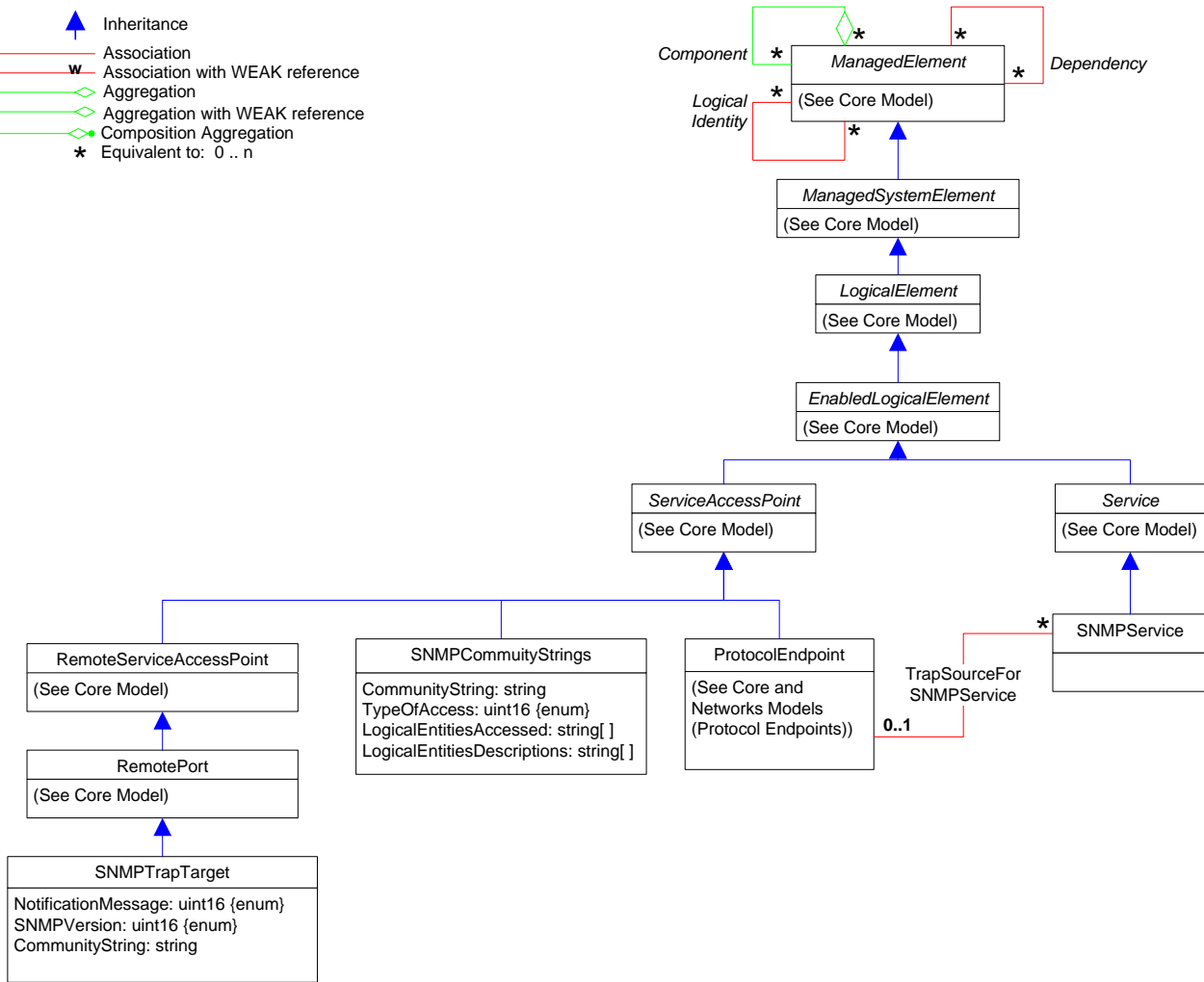
Page 11 : Buffers

-  Inheritance
-  Association
-  Association with WEAK reference
-  Aggregation
-  Aggregation with WEAK reference
-  Composition Aggregation
-  Equivalent to: 0 .. n










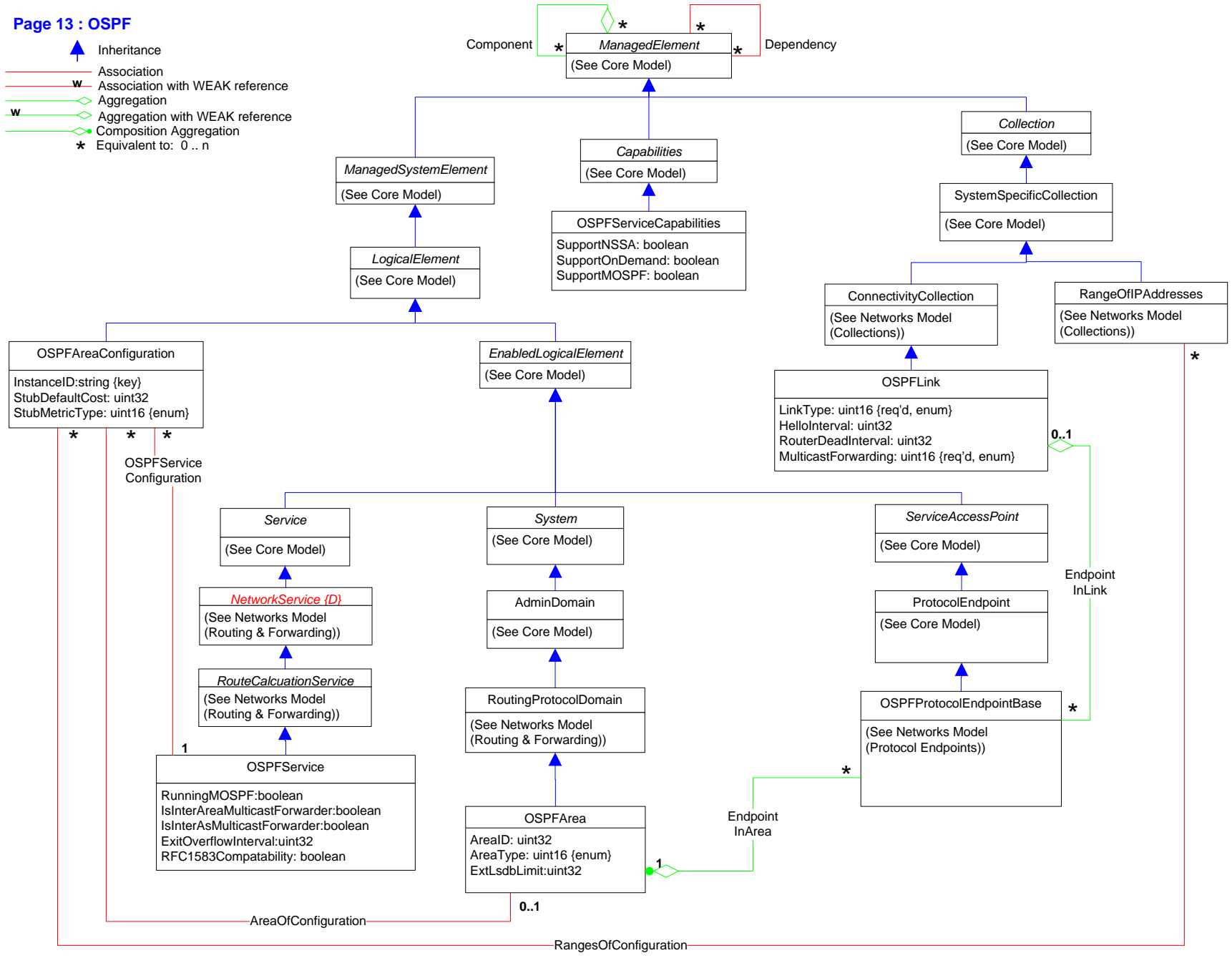
Page 12 : SNMP

-  Inheritance
-  Association
-  Association with WEAK reference
-  Aggregation
-  Aggregation with WEAK reference
-  Composition Aggregation
-  Equivalent to: 0 .. n



Page 13 : OSPF

-  Inheritance
-  Association
-  Association with WEAK reference
-  Aggregation
-  Aggregation with WEAK reference
-  Composition Aggregation
-  Equivalent to: 0..n












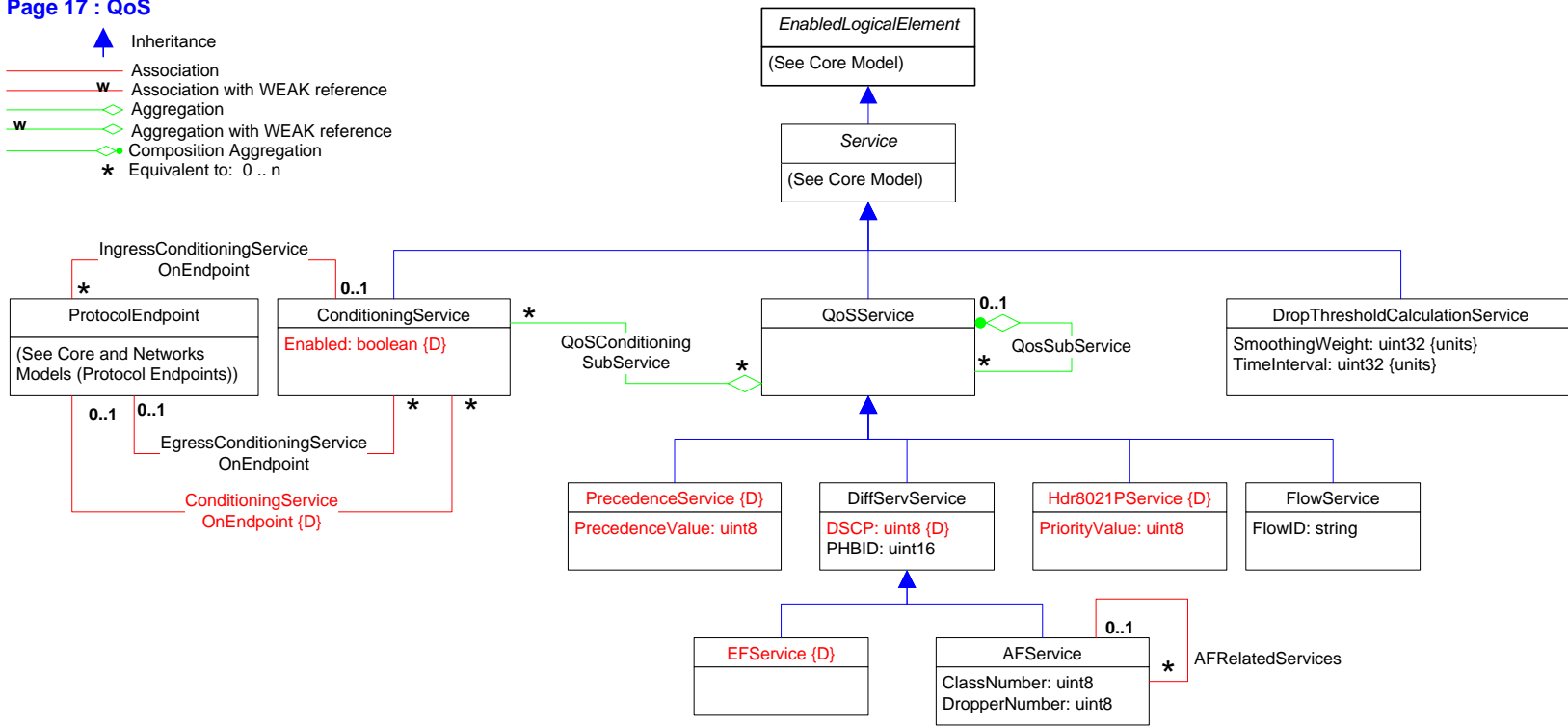






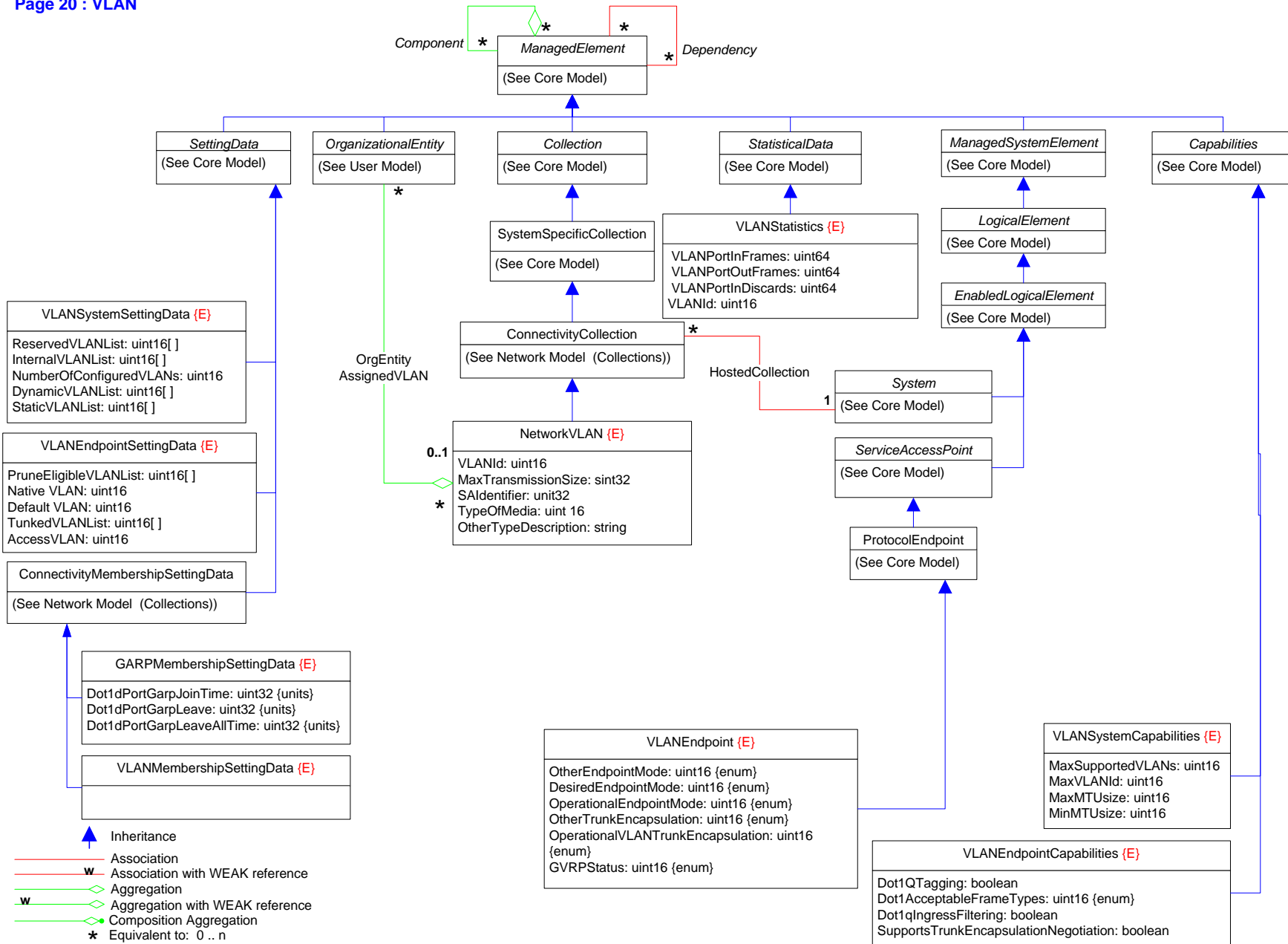
Page 17 : QoS

-  Inheritance
-  Association
-  Association with WEAK reference
-  Aggregation
-  Aggregation with WEAK reference
-  Composition Aggregation
-  \* Equivalent to: 0 .. n












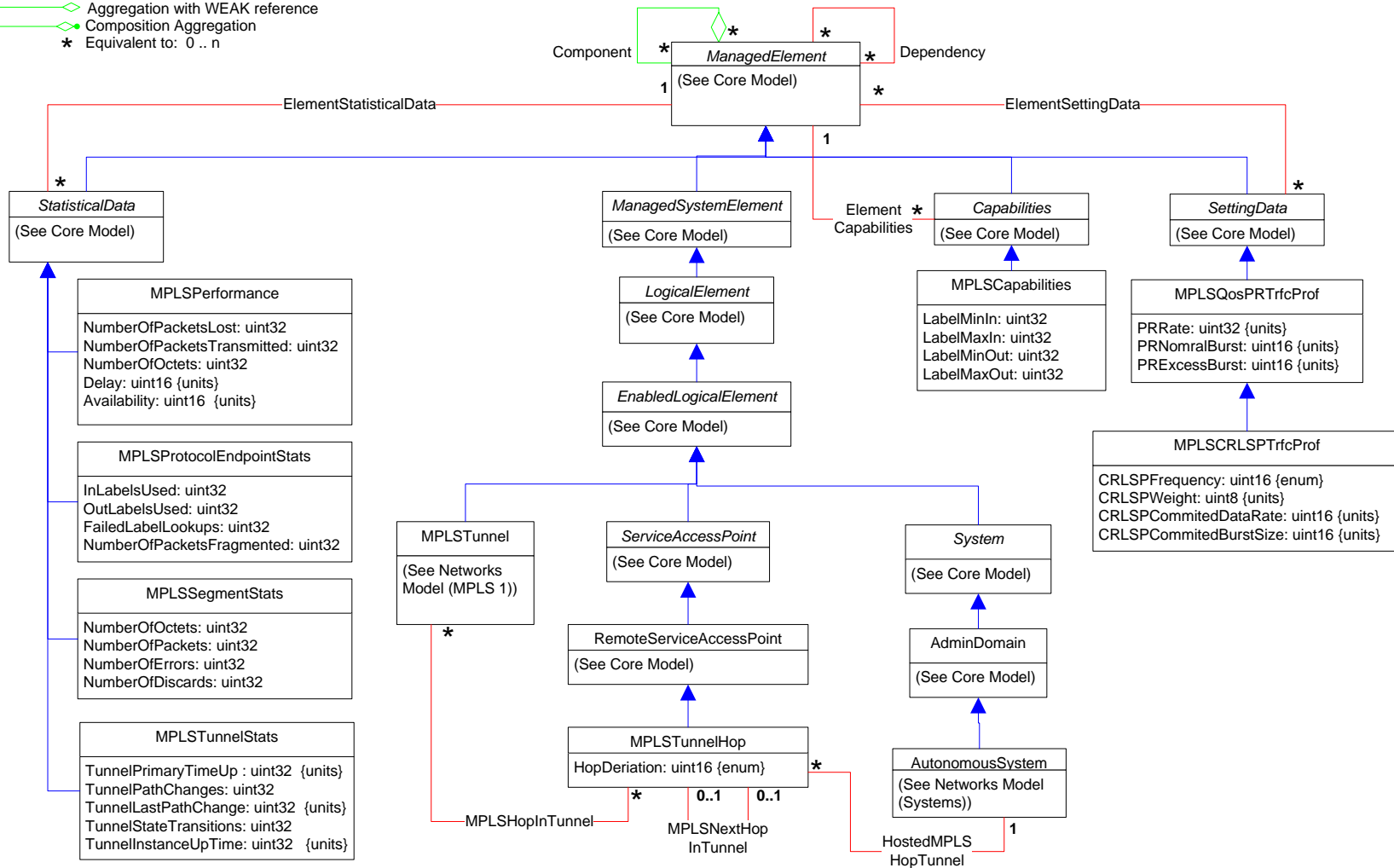













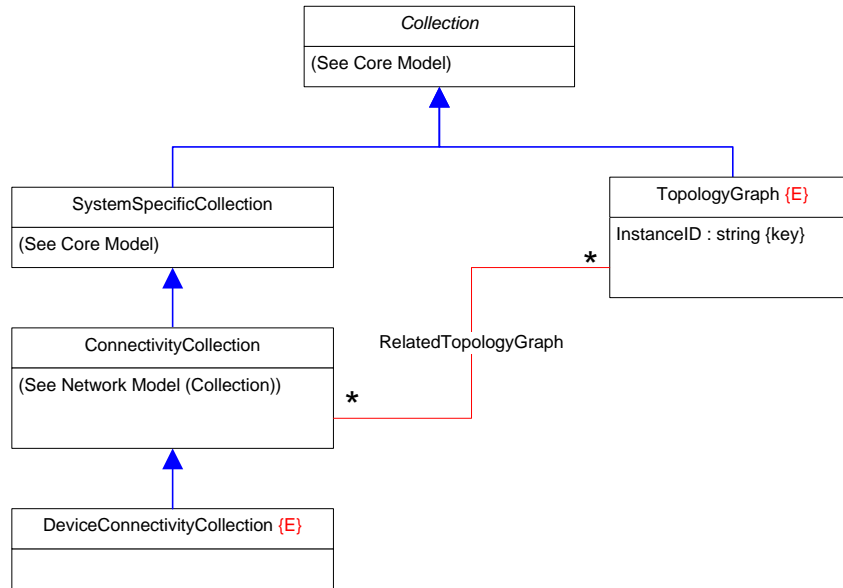
Page 22 : MPLS (2)  
Routes, Statistics, Settings, & Capabilities

-  Inheritance
-  Association
-  Association with WEAK reference
-  Aggregation
-  Aggregation with WEAK reference
-  Composition Aggregation
-  Equivalent to: 0..n

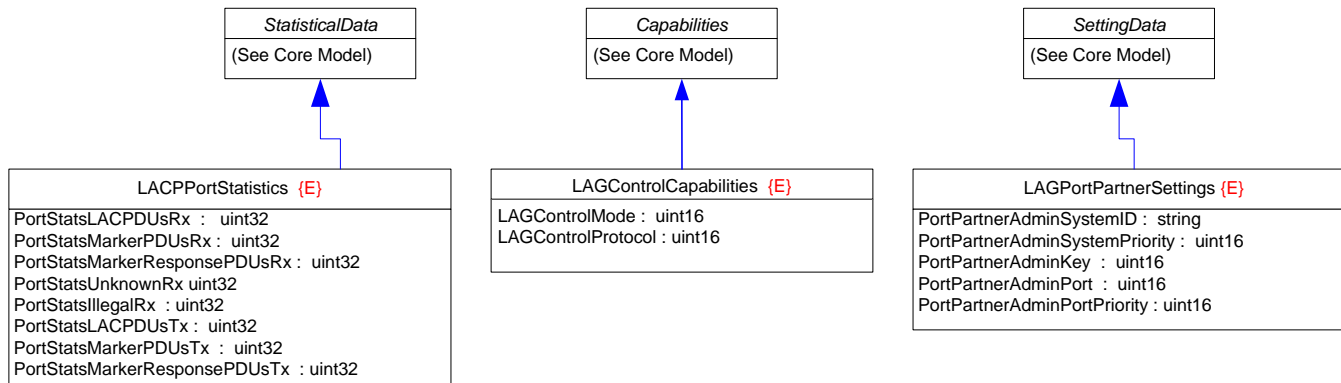
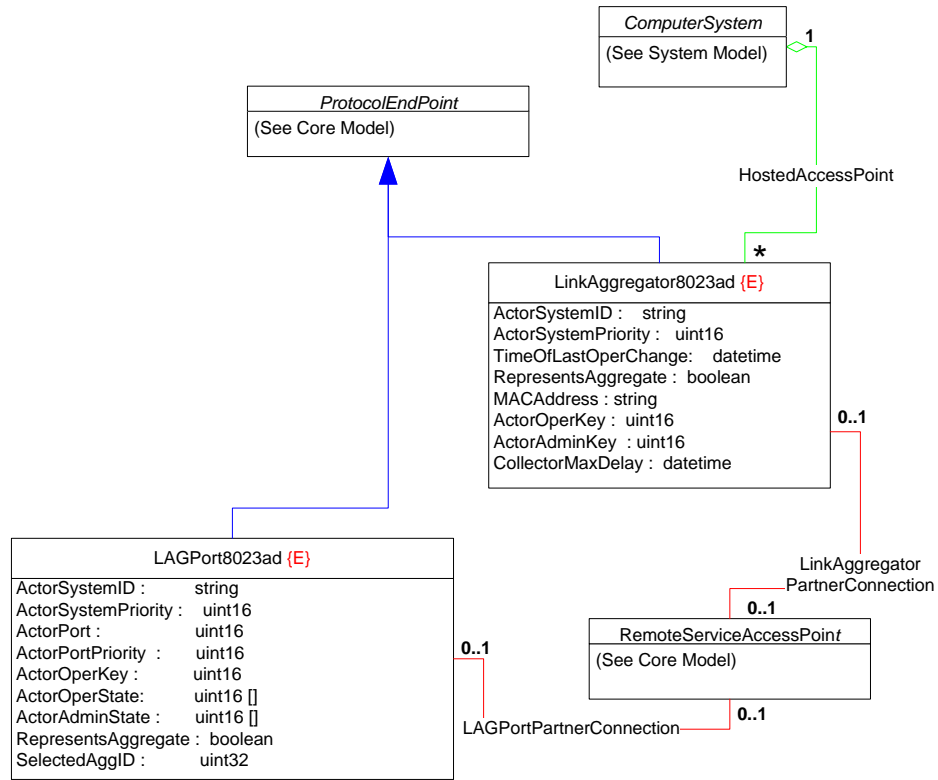
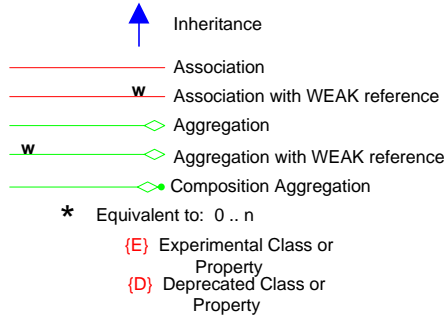


Page 23 : Topology

-  Inheritance
-  Association
-  Association with WEAK reference
-  Aggregation
-  Aggregation with WEAK reference
-  Composition Aggregation
-  Equivalent to: 0 .. n










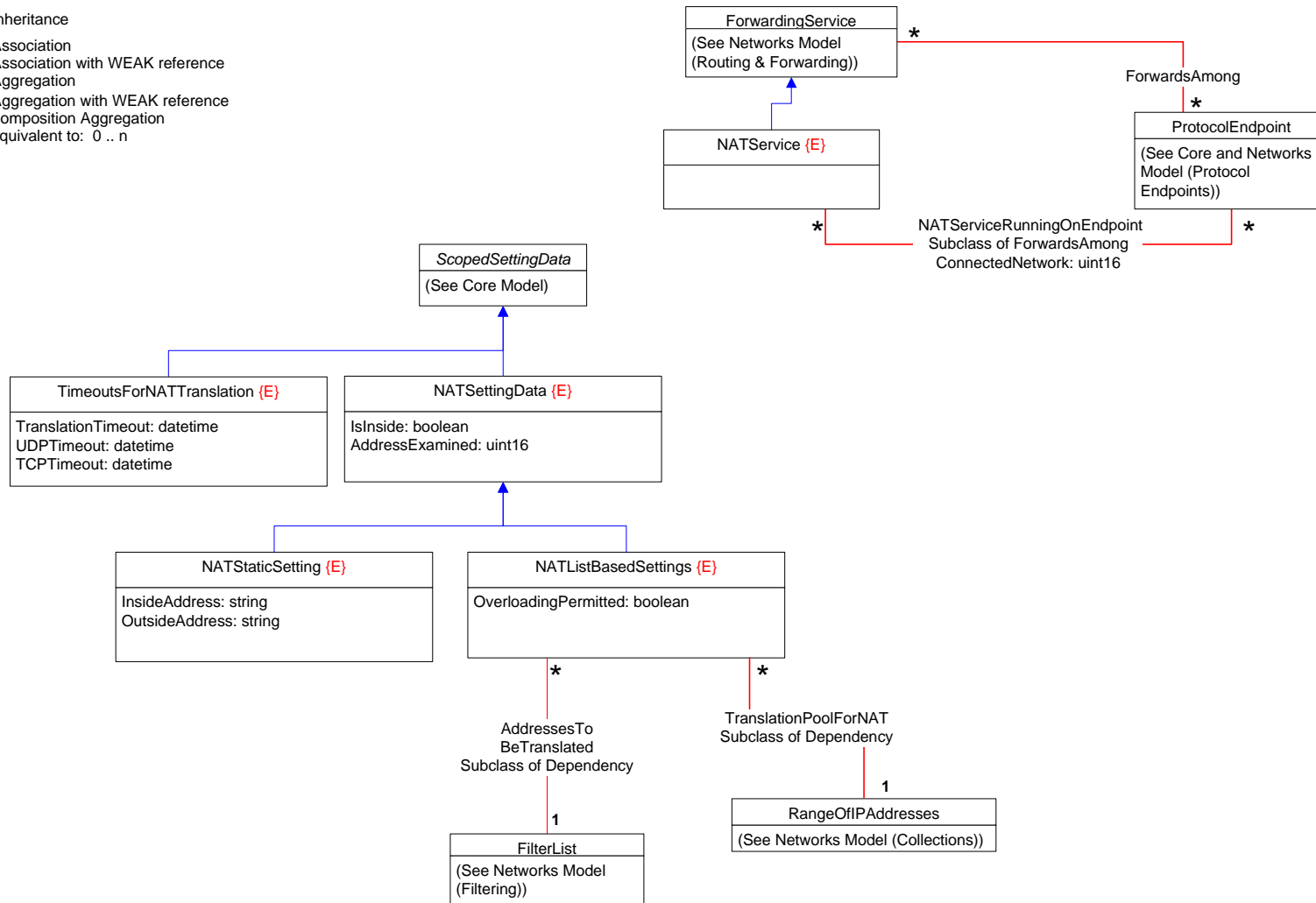
Page 24 : Link Aggregation (802.3ad)












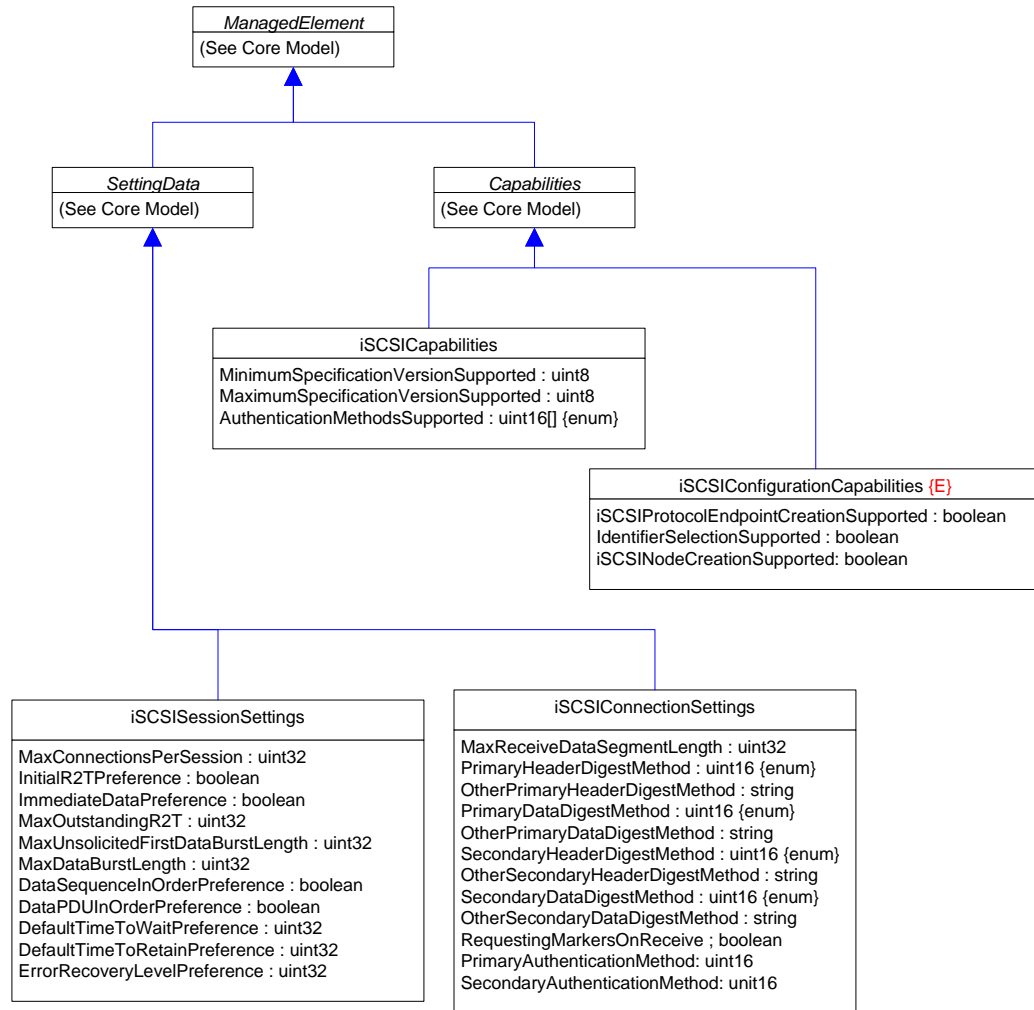
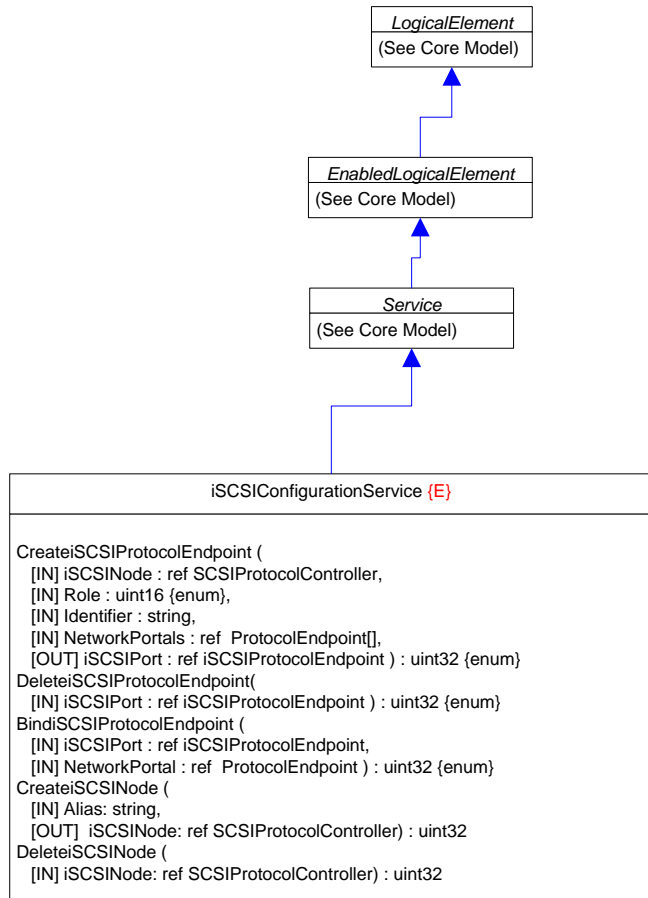
Page 25 : Network Address Translation (NAT)

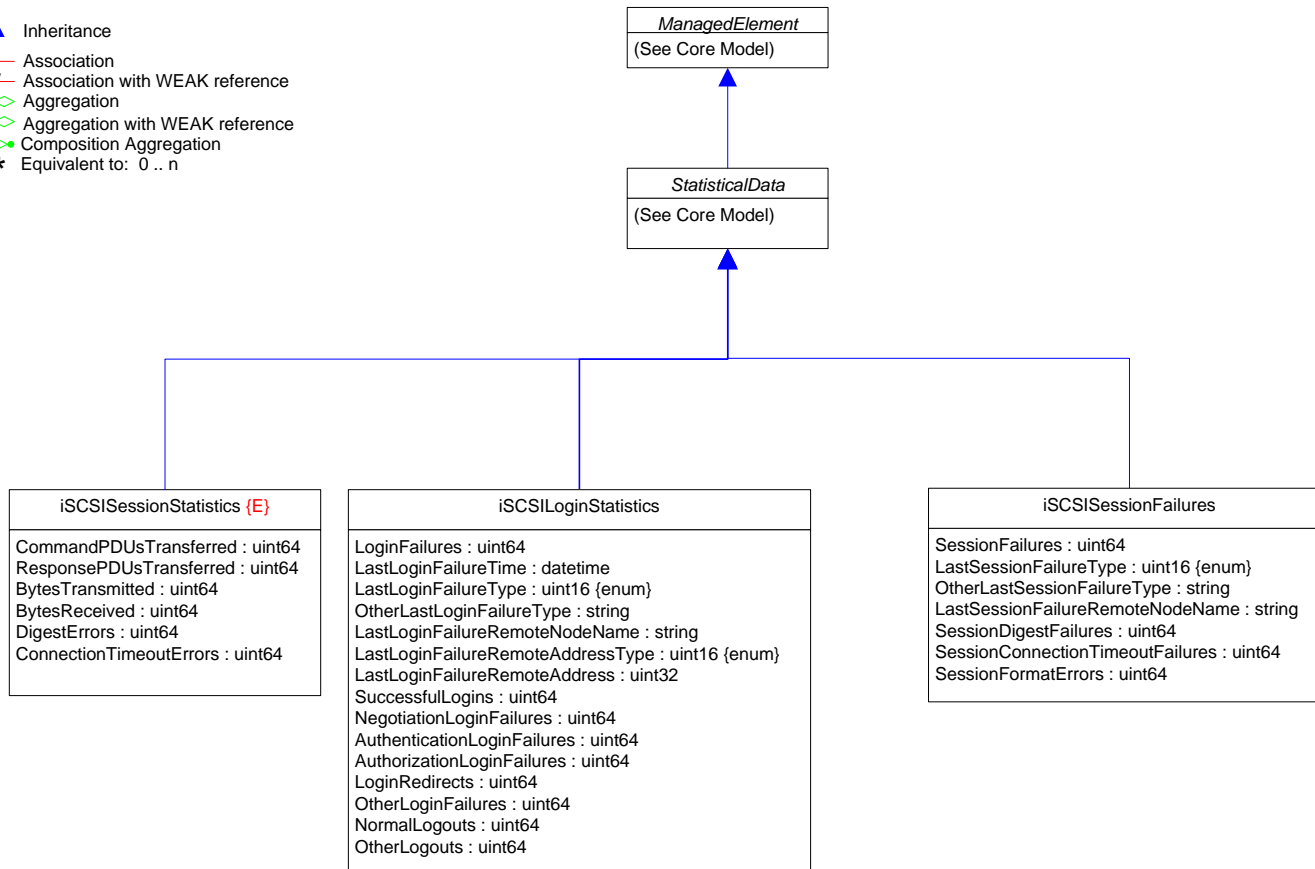
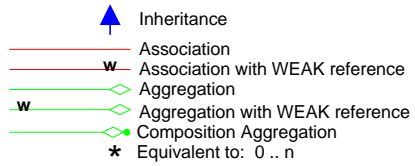
-  Inheritance
-  Association
-  Association with WEAK reference
-  Aggregation
-  Aggregation with WEAK reference
-  Composition Aggregation
-  Equivalent to: 0 .. n










Page 26 : iSCSI (1)

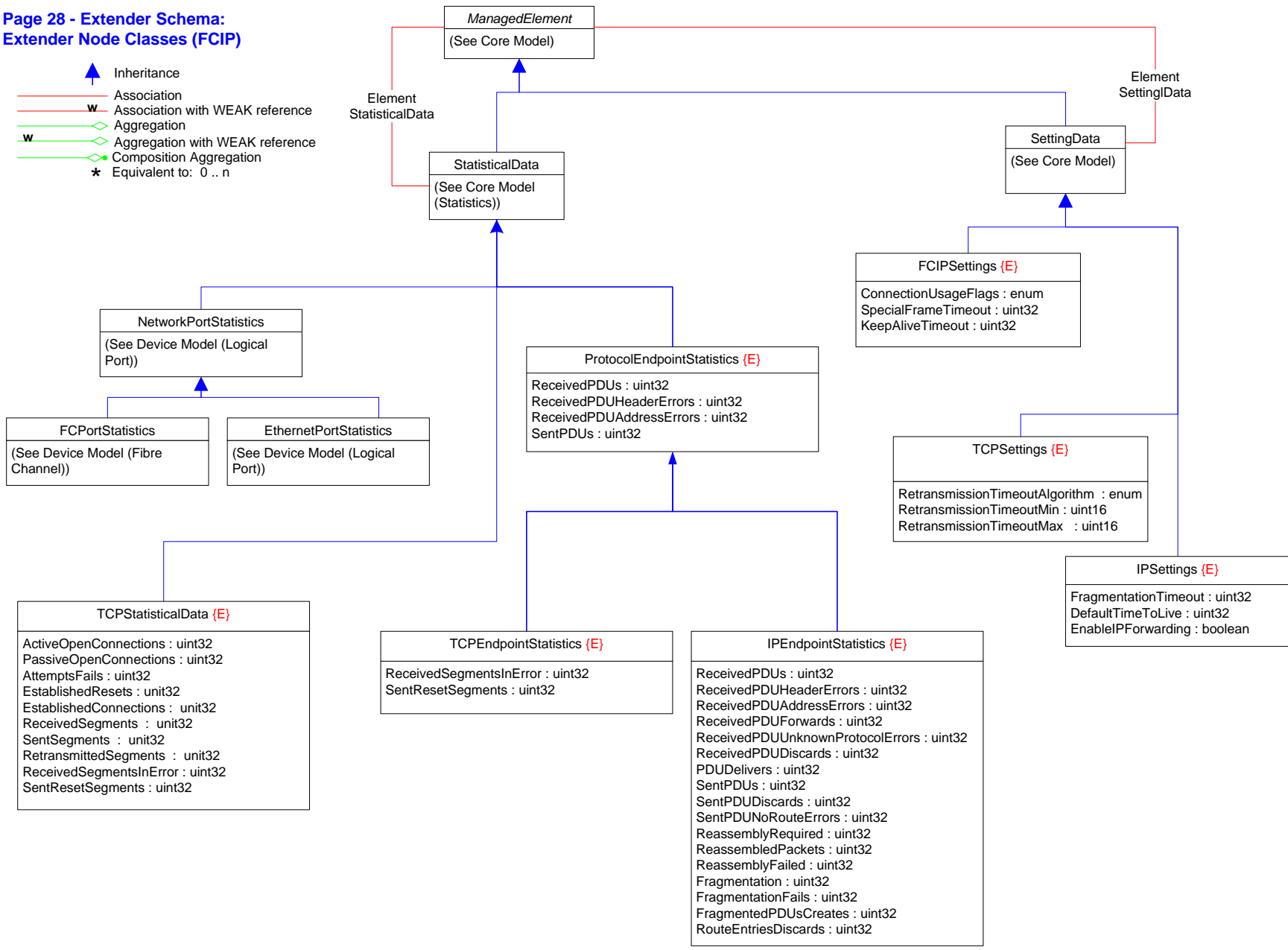
-  Inheritance
-  Association
-  Association with WEAK reference
-  Aggregation
-  Aggregation with WEAK reference
-  Composition Aggregation
-  Equivalent to: 0..n












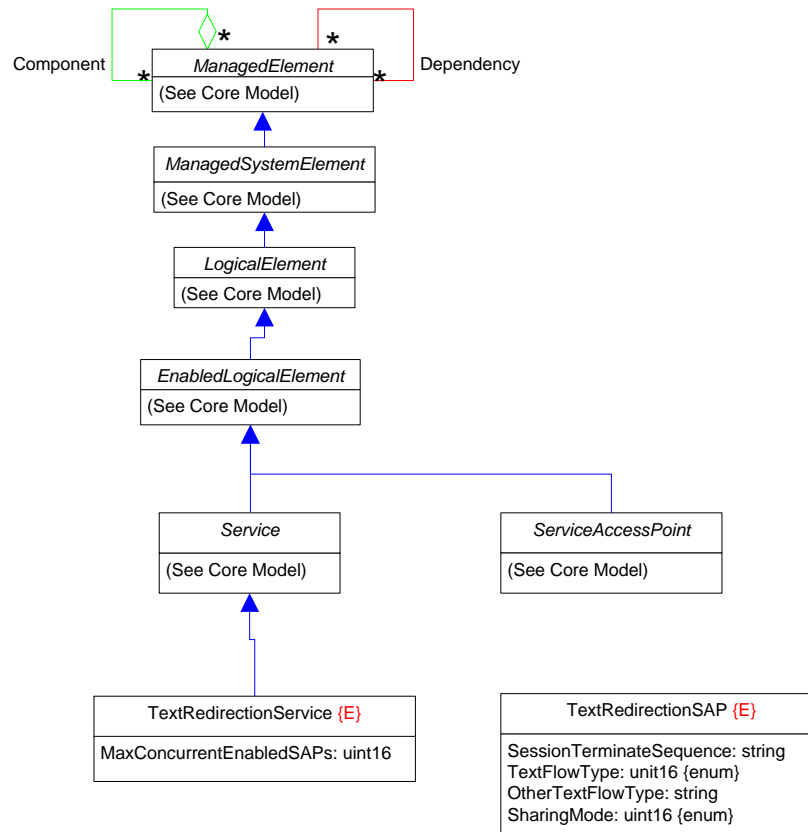
Page 28 - Extender Schema:  
Extender Node Classes (FCIP)

-  Inheritance
-  Association
-  Association with WEAK reference
-  Aggregation
-  Aggregation with WEAK reference
-  Composition Aggregation
-  Equivalent to: 0 .. n










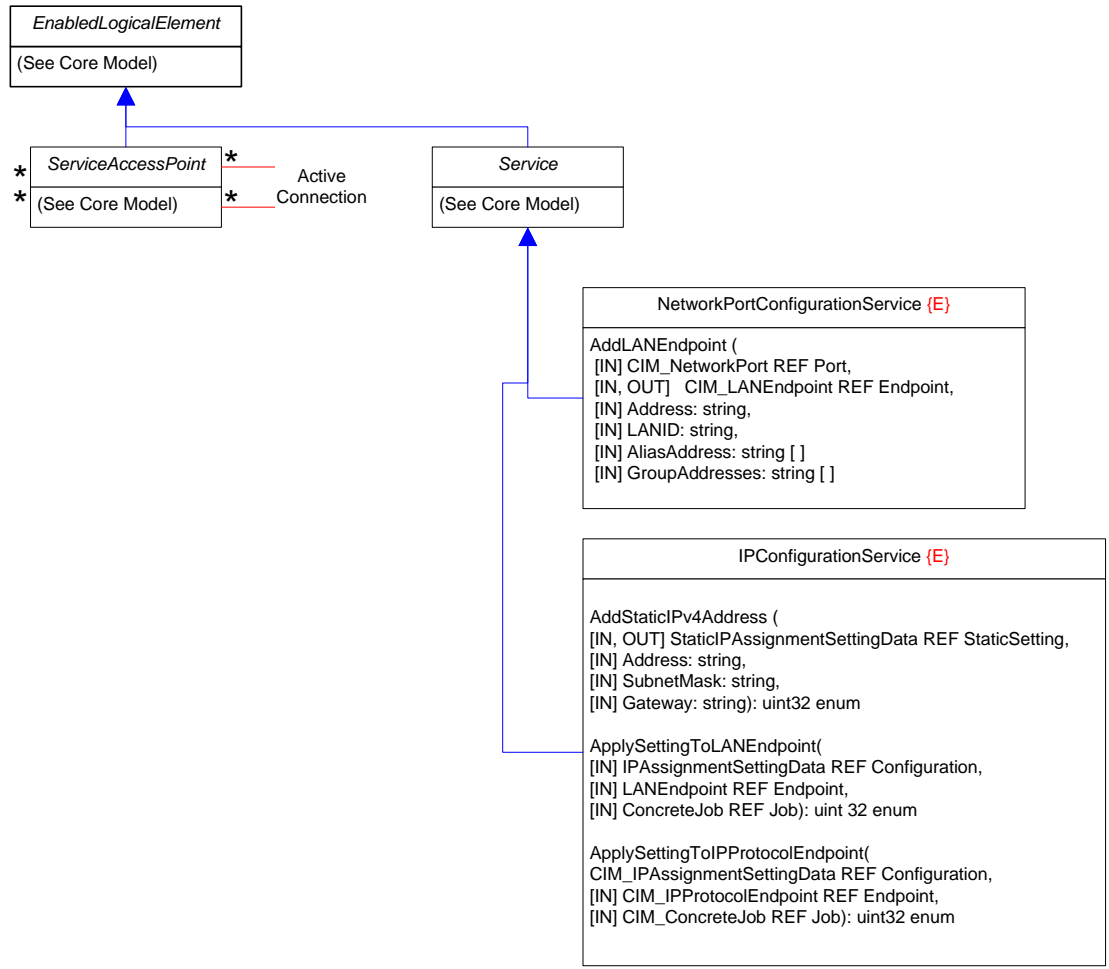
Page 29 : TextRedirect

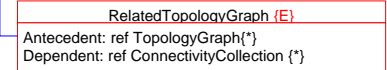
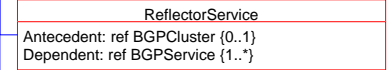
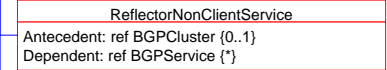
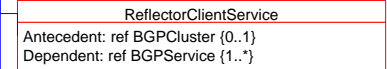
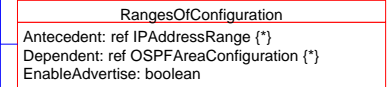
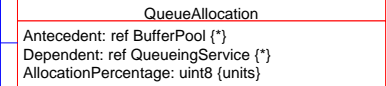
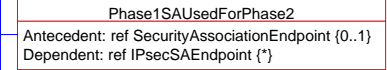
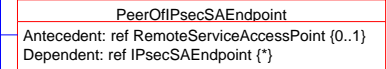
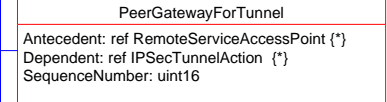
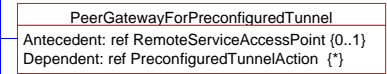
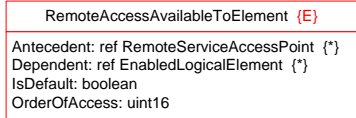
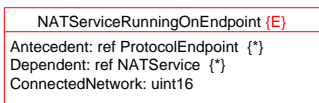
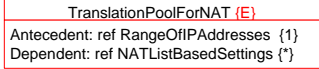
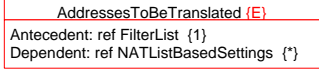
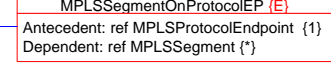
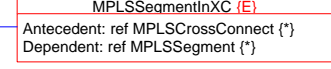
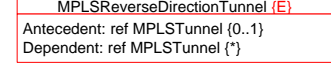
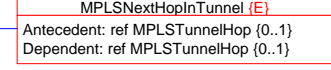
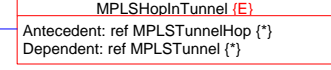
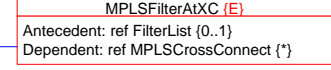
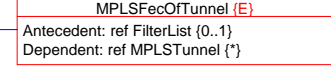
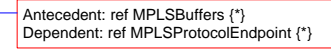
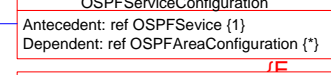
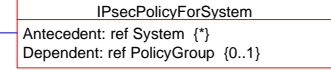
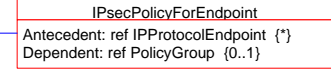
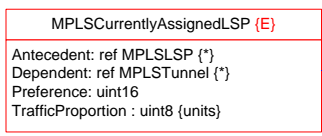
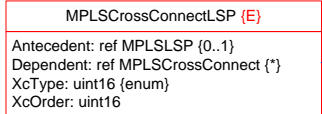
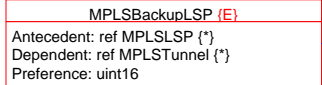
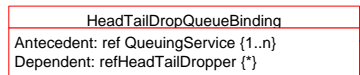
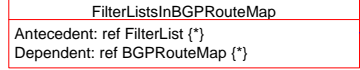
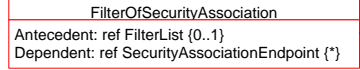
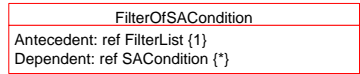
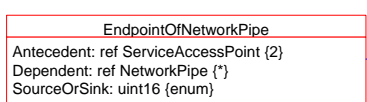
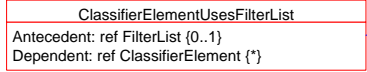
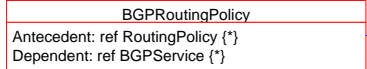
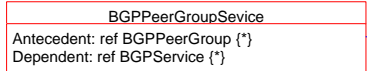
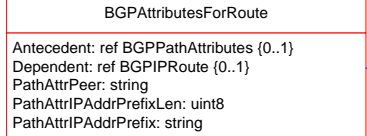
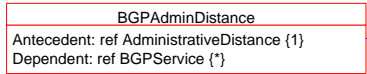
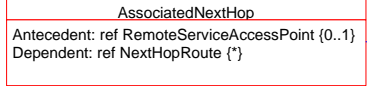
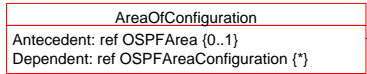
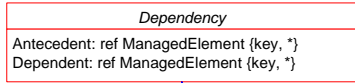
-  Inheritance
-  Association
-  Association with WEAK reference
-  Aggregation
-  Aggregation with WEAK reference
-  Composition Aggregation
-  Equivalent to: 0..n

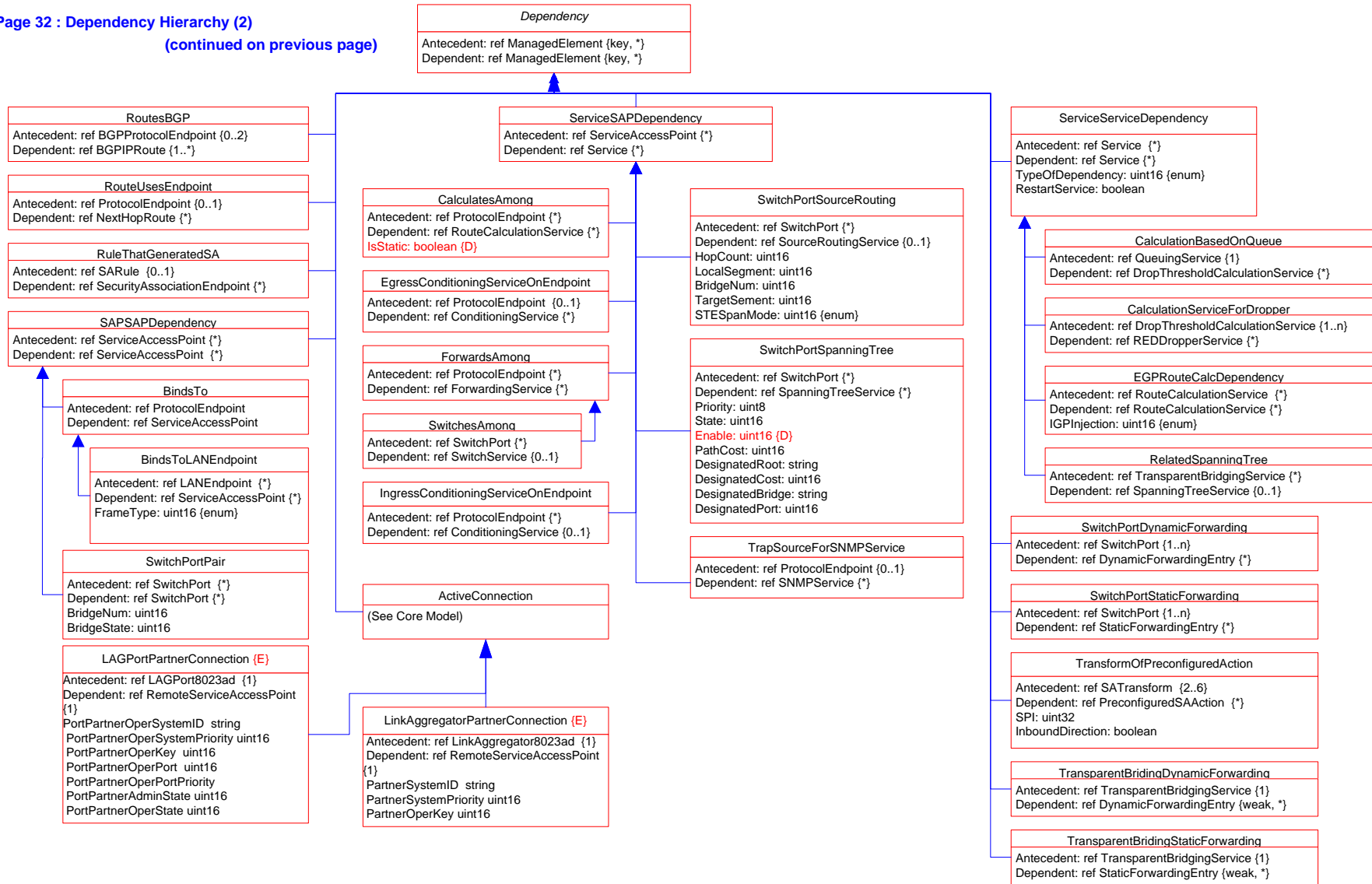


Page 30 : ConfigurationServices

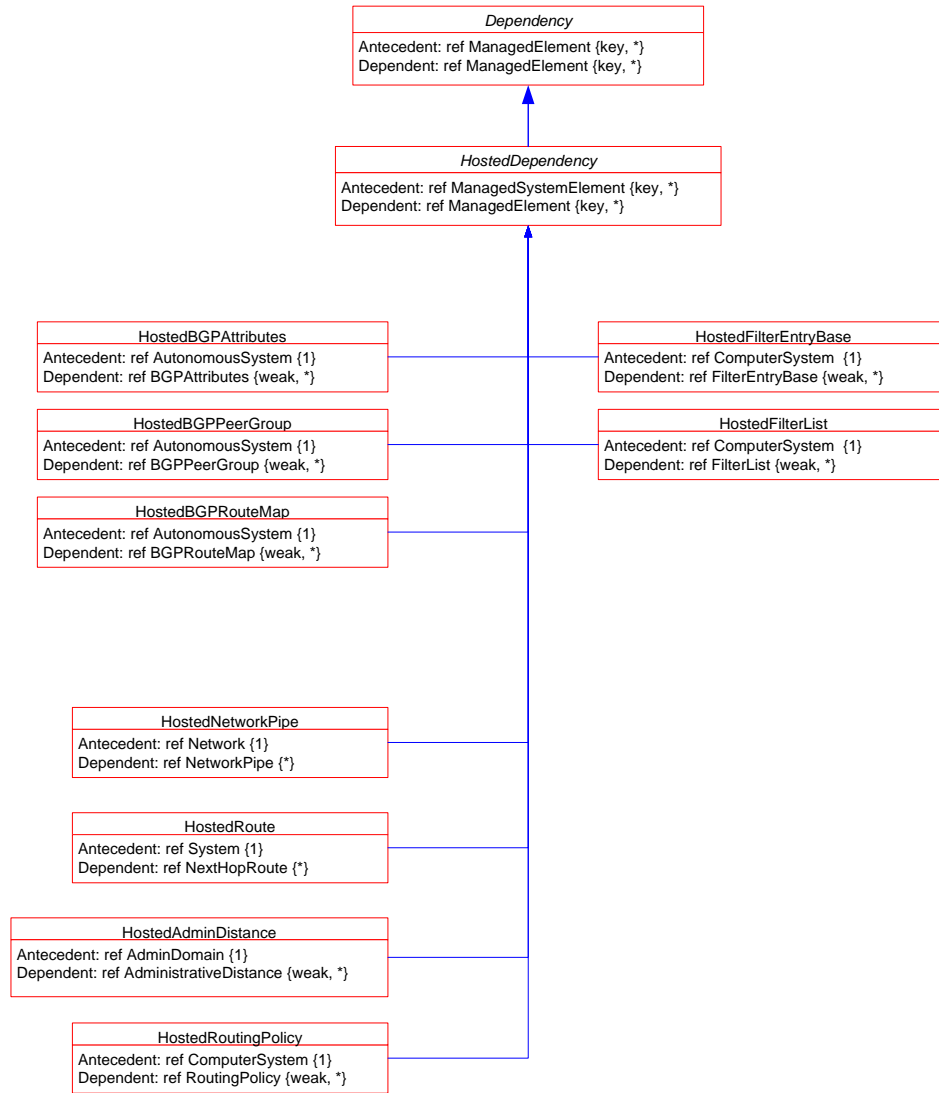
-  Inheritance
-  Association
-  Association with WEAK reference
-  Aggregation
-  Aggregation with WEAK reference
-  Composition Aggregation
-  Equivalent to: 0 .. n



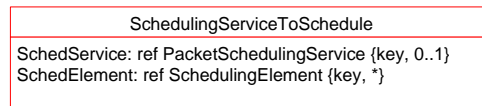
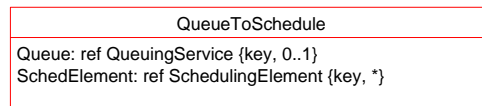
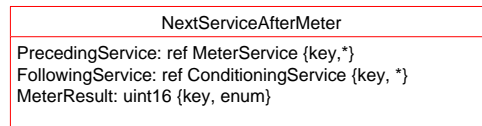
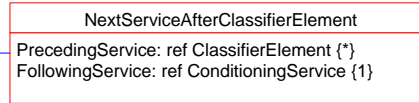
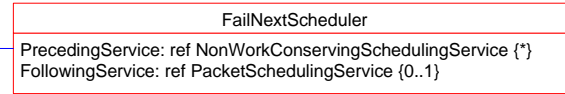
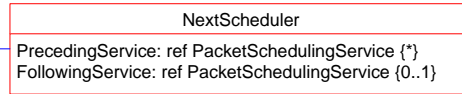
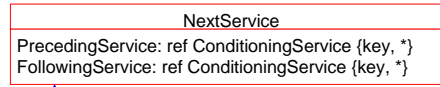
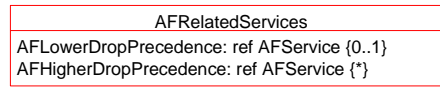
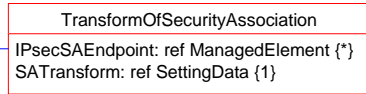
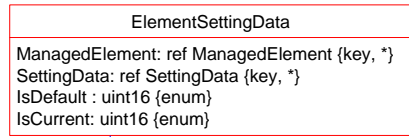
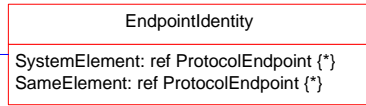
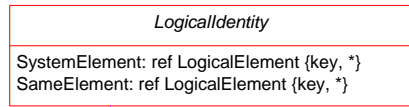


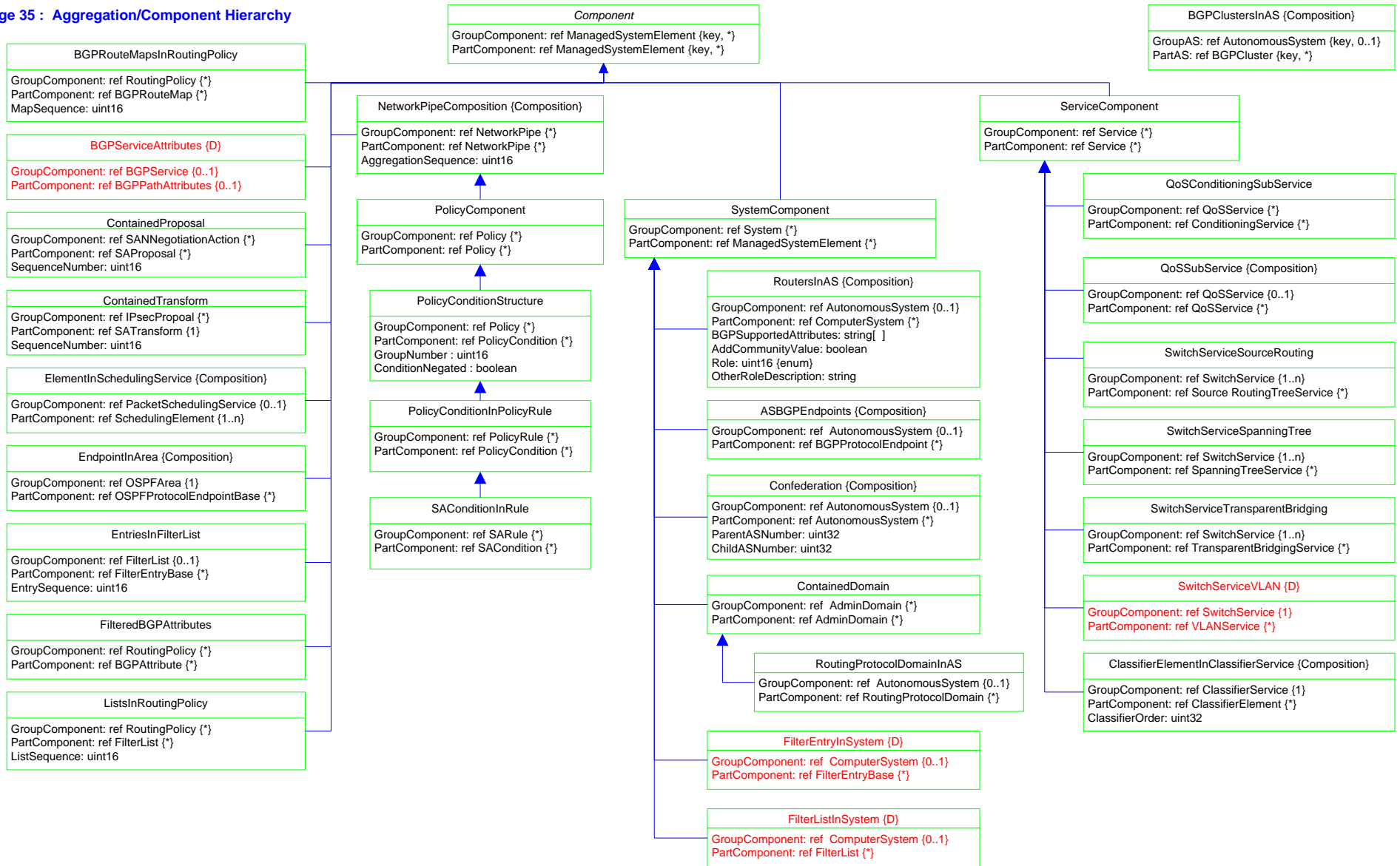




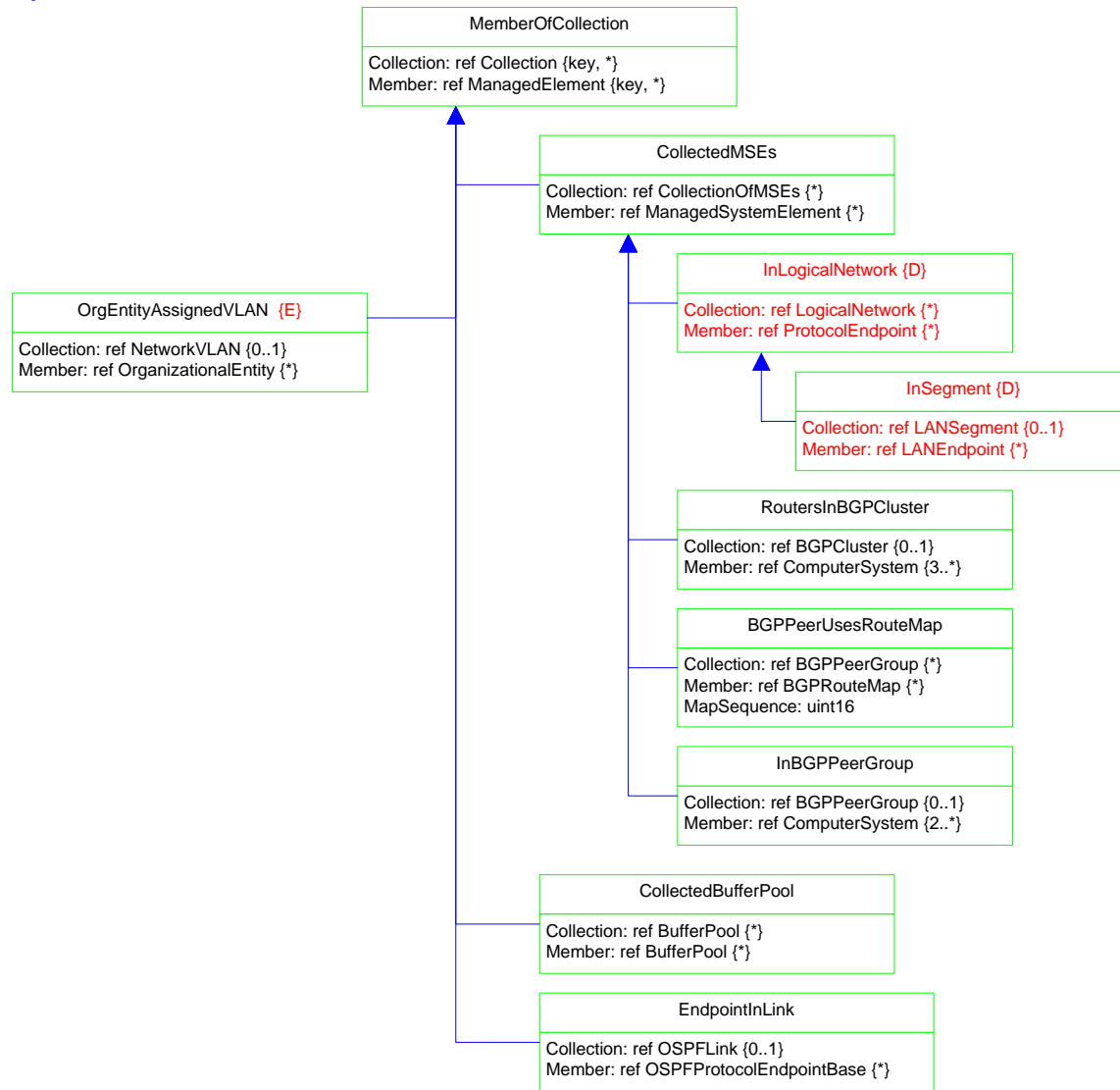


Page 34 : Association (Non-Aggregation/Dependency) Hierarchy












Page 36 : MemberOfCollection Hierarchy



Page 37 : Deprecated VLAN

-  Inheritance
-  Association
-  Association with WEAK reference
-  Aggregation
-  Aggregation with WEAK reference
-  Composition Aggregation
-  Equivalent to: 0 .. n

